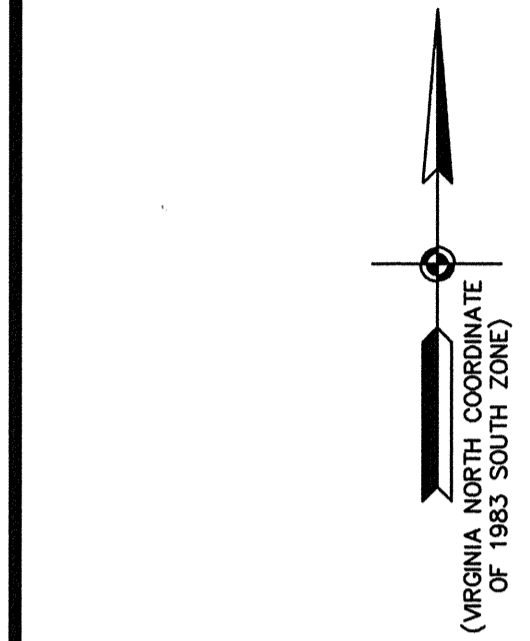
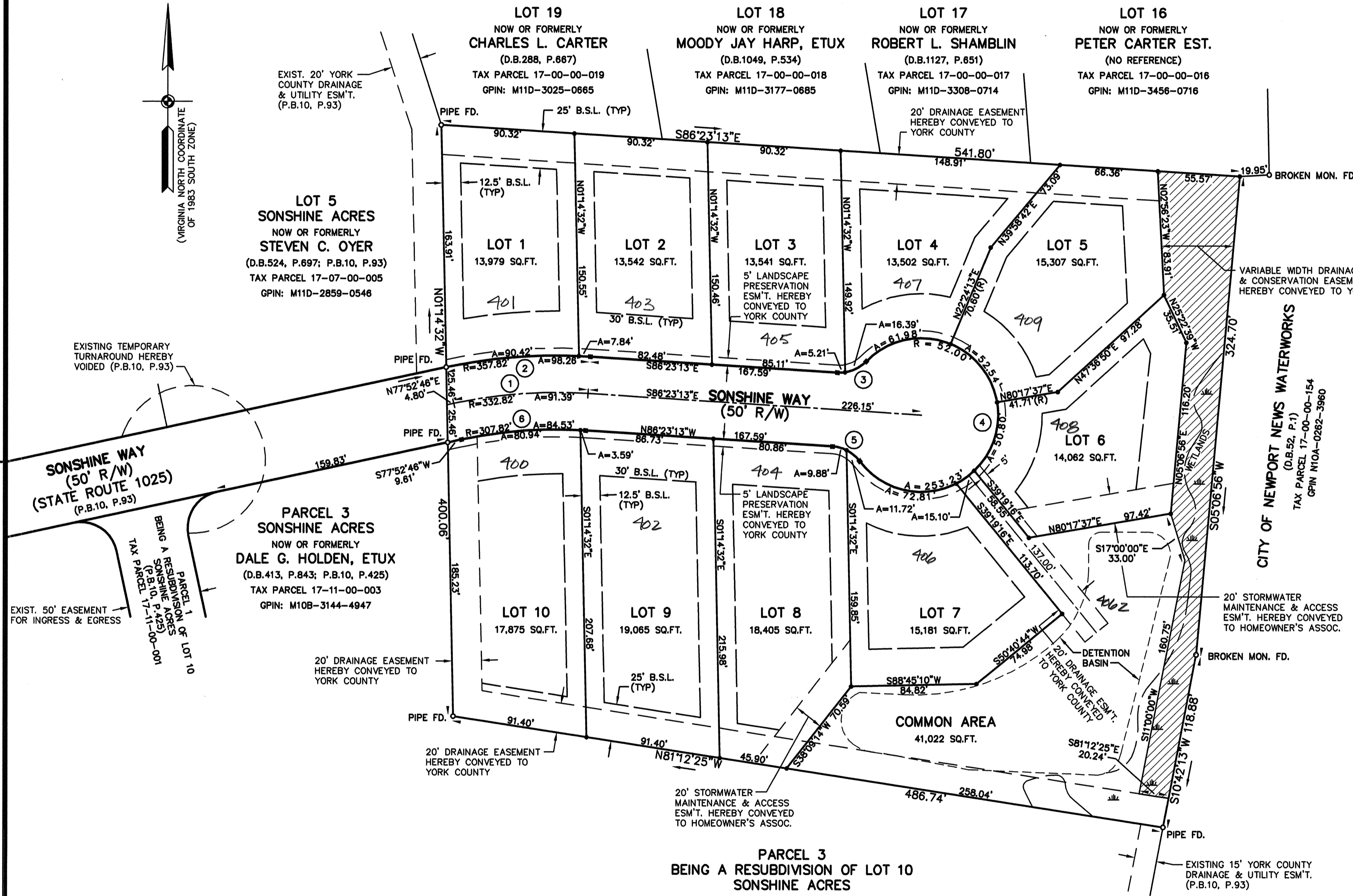


**SUBDIVISION PLAT**  
**CHEYENNE HILLS**  
 NELSON DISTRICT - COUNTY OF YORK, VIRGINIA  
 SCALE: 1" = 50' MARCH 21, 2001  
 SHEET 2 OF 2

GRAPHIC SCALE

**THE SIRINE GROUP, LTD.**  
 SURVEYORS • ENGINEERS • PLANNERS  
 4794 GEORGE WASHINGTON MEMORIAL HIGHWAY  
 U.S. ROUTE 17  
 P.O. BOX 450  
 WHITE MARSH, VIRGINIA 23183



EXISTING TEMPORARY TURNAROUND HEREBY VOIDED (P.B.10, P.93)

**SONSHINE WAY (50' R/W)**  
 (P.B.10, P.93)

EXIST. 50' EASEMENT FOR INGRESS & EGRESS

PARCEL 1 BEING A RESUBDIVISION OF LOT 10 SONSHINE ACRES (P.B.10, P.425) TAX PARCEL 17-11-00-001

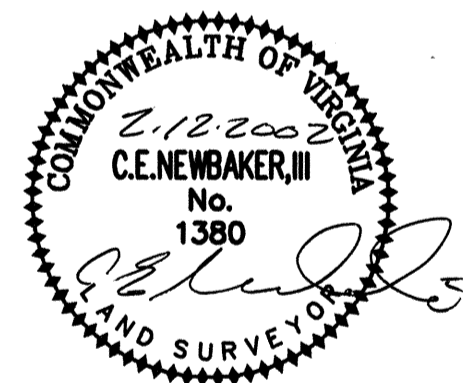
**PARCEL 3 SONSHINE ACRES**  
 NOW OR FORMERLY **DALE G. HOLDEN, ETUX**  
 (D.B.413, P.843; P.B.10, P.425)  
 TAX PARCEL 17-11-00-003  
 GPIN: M10B-3144-4947

20' DRAINAGE EASEMENT HEREBY CONVEYED TO YORK COUNTY

20' DRAINAGE EASEMENT HEREBY CONVEYED TO YORK COUNTY

20' DRAINAGE EASEMENT HEREBY CONVEYED TO YORK COUNTY

**PARCEL 3 BEING A RESUBDIVISION OF LOT 10 SONSHINE ACRES**  
 (P.B.10, P.425)  
 NOW OR FORMERLY **DALE G. HOLDEN, ETUX**  
 (D.B.413, P.843; P.B.10, P.425)  
 TAX PARCEL 17-11-00-003  
 GPIN: M10B-3144-4947



APPROVED:  
 YORK COUNTY BOARD OF SUPERVISORS  
 BY: *Al Maddalena*  
 PLAT APPROVING AGENT

DATE: 4/16/02

STATE OF VIRGINIA  
 COUNTY OF YORK

IN THE CLERK'S OFFICE OF THE CIRCUIT COURT FOR THE COUNTY OF YORK, VIRGINIA, THE 25 DAY OF April, 2002, THIS PLAT WAS PRESENTED AND ADMITTED TO RECORD AS INSTRUMENT NUMBER 020001488

TESTE: *Lynn S. Jenkins*  
 CLERK

BY: *White*  
 DEPUTY CLERK

PROPERTY IS ASSESSOR'S NUMBER 17-00-00-015.  
 GPIN NUMBER M11D-3253-0286