

Design File - c:\documents of ms... Ref. File - c:\documents of ms... Levels On - 17963

Ref. File - c:\documents of ms... Levels On - 17963

Ref. File - c:\documents of ms... Levels On - 143

Ref. File - c:\documents of ms... Levels On - 143

Ref. File - c:\documents of ms... Levels On - 143

Ref. File - c:\documents of ms... Levels On - 143

Ref. File - c:\documents of ms... Levels On - 143

Ref. File - c:\documents of ms... Levels On - 143

Ref. File - c:\documents of ms... Levels On - 143

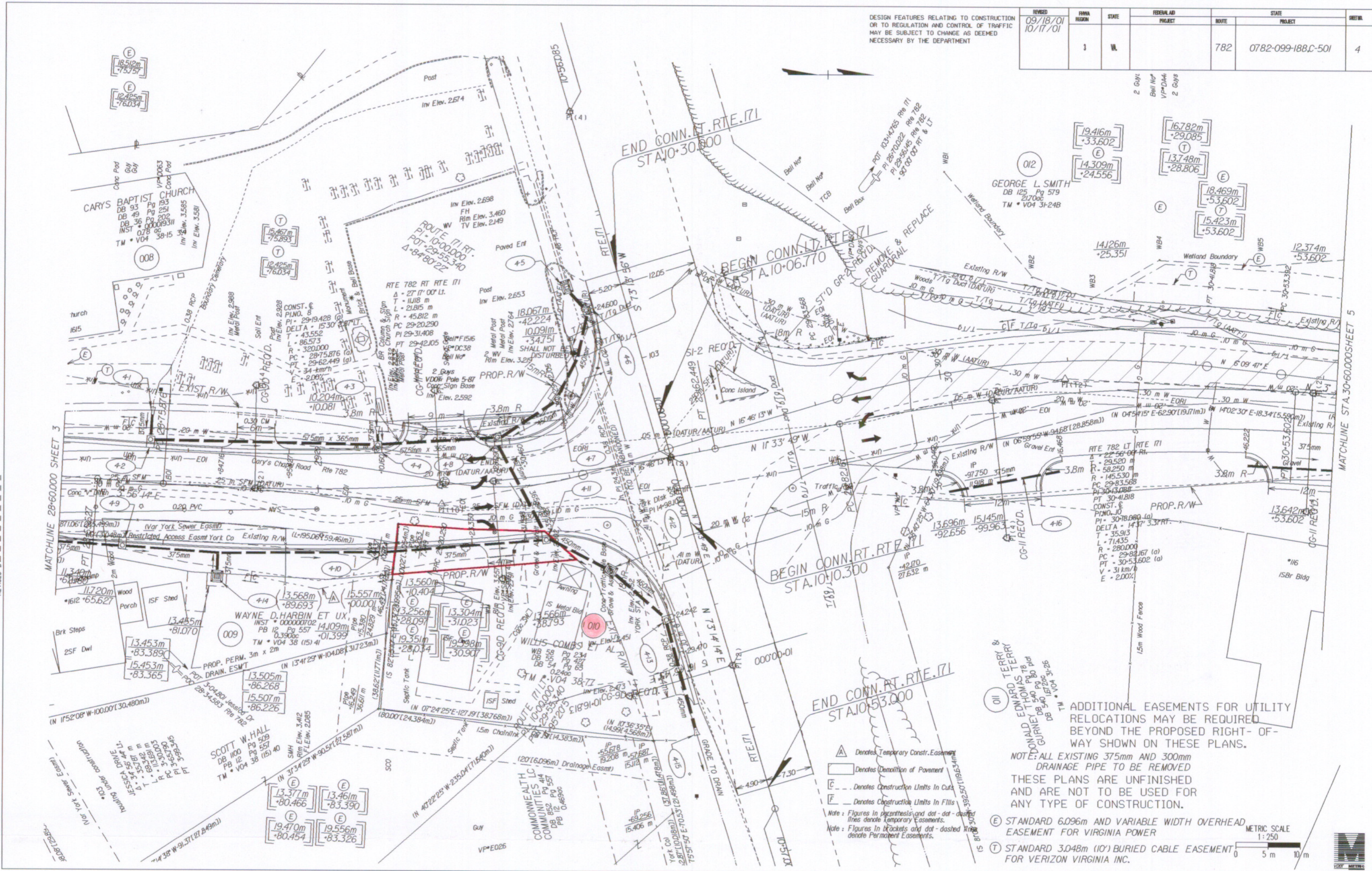
Ref. File - c:\documents of ms... Levels On - 143

DESIGN FEATURES RELATING TO CONSTRUCTION OR TO REGULATION AND CONTROL OF TRAFFIC MAY BE SUBJECT TO CHANGE AS DEEMED NECESSARY BY THE DEPARTMENT

REVISED	FHWA REGION	STATE	FEDERAL AID PROJECT	ROUTE	STATE PROJECT	SHEET
09/18/01 10/17/01	3	VA		782	0782-099-188,C-501	4

HAMPTON ROADS DISTRICT DESIGN UNIT

SURVEYED BY... DESIGNED BY... CADD OPERATOR...



ADDITIONAL EASEMENTS FOR UTILITY RELOCATIONS MAY BE REQUIRED BEYOND THE PROPOSED RIGHT-OF-WAY SHOWN ON THESE PLANS.

NOTE: ALL EXISTING 375mm AND 300mm DRAINAGE PIPE TO BE REMOVED THESE PLANS ARE UNFINISHED AND ARE NOT TO BE USED FOR ANY TYPE OF CONSTRUCTION.

- (E) STANDARD 6.096m AND VARIABLE WIDTH OVERHEAD EASEMENT FOR VIRGINIA POWER
- (T) STANDARD 3.048m (10') BURIED CABLE EASEMENT FOR VERIZON VIRGINIA INC.

- △ Denotes Temporary Constr. Easement
- Denotes Demolition of Pavement
- ⊔ Denotes Construction Limits In Cuts
- ⊔ Denotes Construction Limits In Fills

METRIC SCALE 1:250