

Design File - c:\documents of ms_jacov\7935008-4\gpr\7935008.dgn Levels On - 173-63

Ref. File - c:\documents of ms_jacov\7935008.dgn Levels On - 150.52-63

Ref. File - 4793500.dgn Levels On - 163

Ref. File - c:\documents of ms_jacov\7935008.dgn Levels On - 163

Ref. File - c:\documents of ms_jacov\7935008.dgn Levels On - 153.146-60.62-63

Ref. File - 4793500.dgn Levels On - 163

Ref. File - c:\documents of ms_jacov\7935008.dgn Levels On - 163

Ref. File - c:\documents of ms_jacov\7935008.dgn Levels On - 163

Ref. File - c:\documents of ms_jacov\7935008.dgn Levels On - 159.61-63

Ref. File - c:\documents of ms_jacov\7935008.dgn Levels On - 163

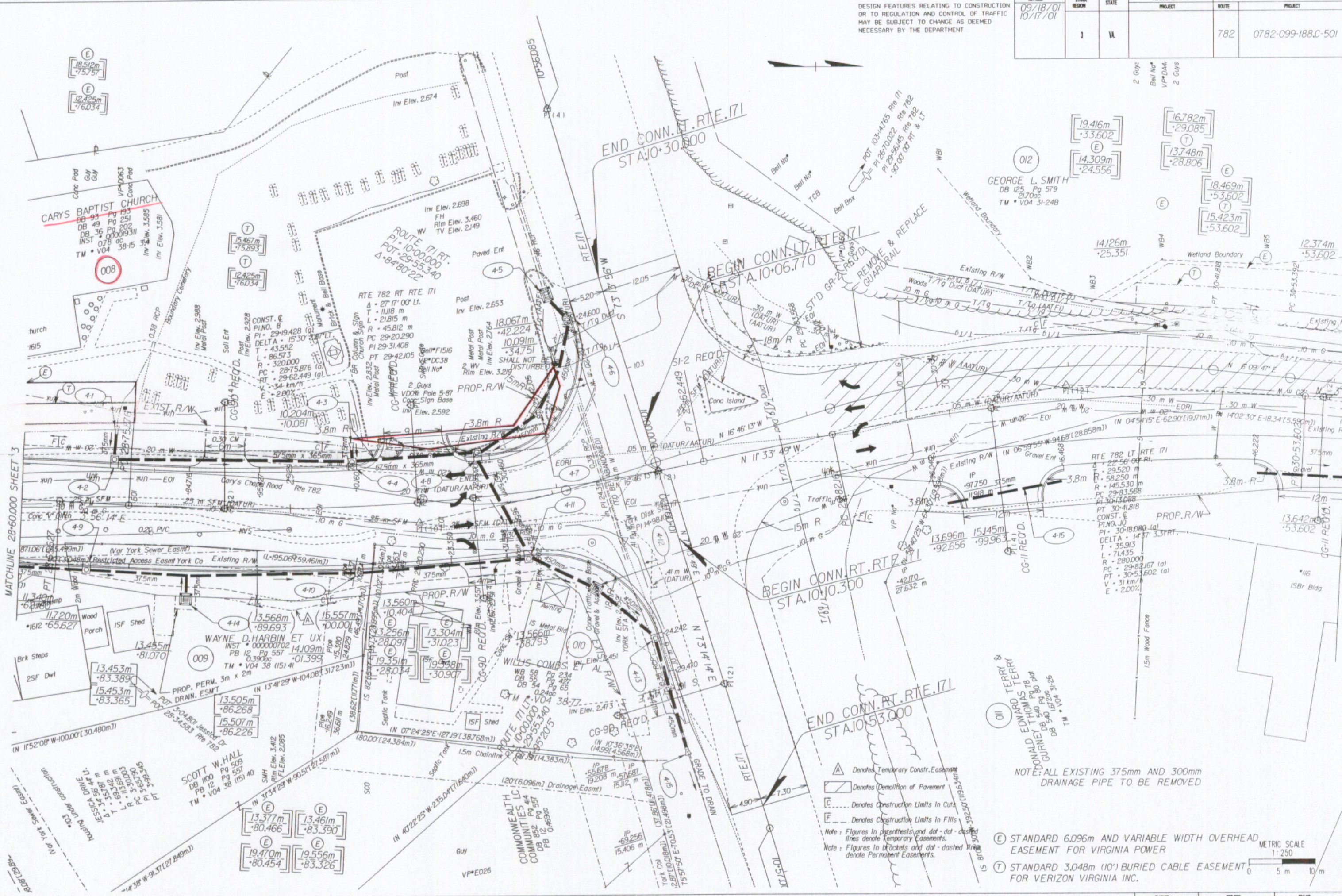
REVISED	FINNA	STATE	FEDERAL AID	STATE	SHEET NO.
DATE	REGION		PROJECT	PROJECT	
09/18/01		VA		782	4
10/17/01				0782-099-188.C-501	

DESIGN FEATURES RELATING TO CONSTRUCTION OR TO REGULATION AND CONTROL OF TRAFFIC MAY BE SUBJECT TO CHANGE AS DEEMED NECESSARY BY THE DEPARTMENT

2 Guys
Bell No
V/P/D/A
2 Guys

HAMPTON ROADS DISTRICT DE V UNIT

MATCHLINE STA. 30+60.00 SHEET 5



SURVEYED BY: G.O. HARMON 252, 483-537
SUPERVISED BY: H.S. BAITS, K100, 159-925-1559
DESIGNED BY: K.E. BARTEN, 757-924-9566
CADD OPERATOR: G. JACOV, 757-924-9566
REVISED BY:

- △ Denotes Temporary Constr. Easement
 - ▨ Denotes Demolition of Pavement
 - Denotes Construction Limits in Cuts
 - - - Denotes Construction Limits in Fills
- Note: Figures in parenthesis and dot-dot-dashed lines denote Temporary Easements.
Note: Figures in brackets and dot-dashed lines denote Permanent Easements.

NOTE: ALL EXISTING 375mm AND 300mm DRAINAGE PIPE TO BE REMOVED

- ⓔ STANDARD 6.096m AND VARIABLE WIDTH OVERHEAD EASEMENT FOR VIRGINIA POWER
- Ⓣ STANDARD 3.048m (10') BURIED CABLE EASEMENT FOR VERIZON VIRGINIA INC.

