

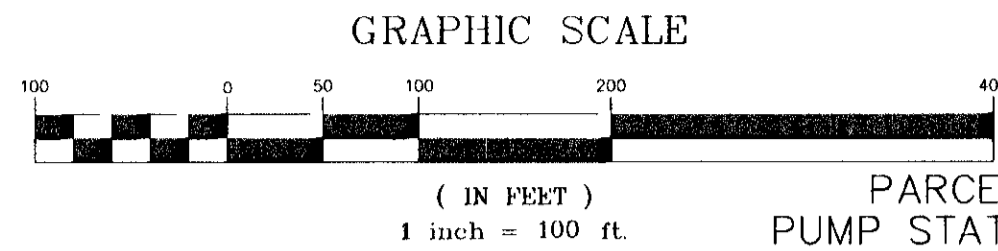
PLAT OF SUBDIVISION
AND DEDICATION OF EASEMENTS
PHASE 1A
FAIRFIELD WILLIAMSBURG @
GOVERNOR'S GREEN

BRUTON DISTRICT YORK COUNTY, VIRGINIA
SCALE 1"=100'

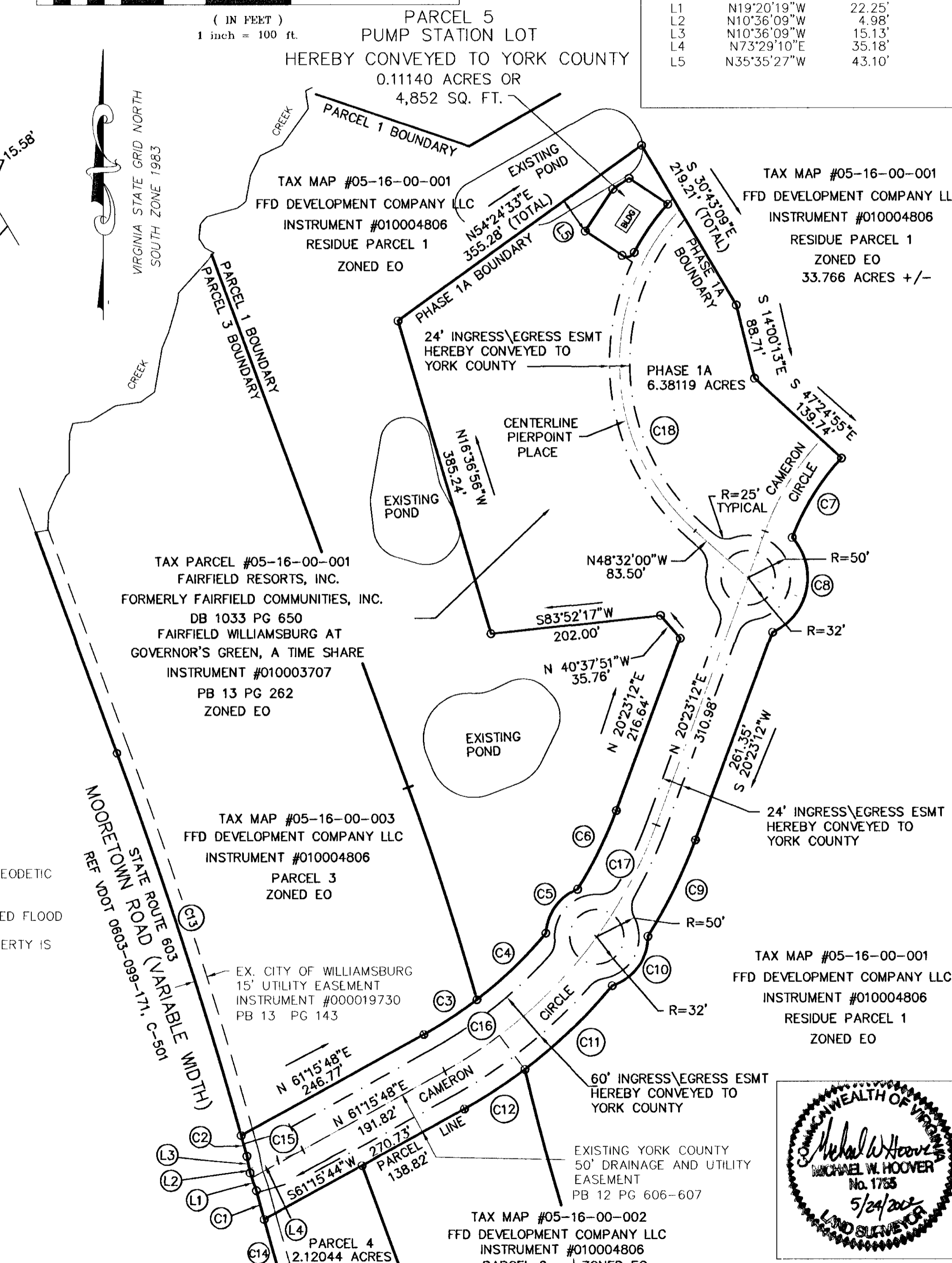
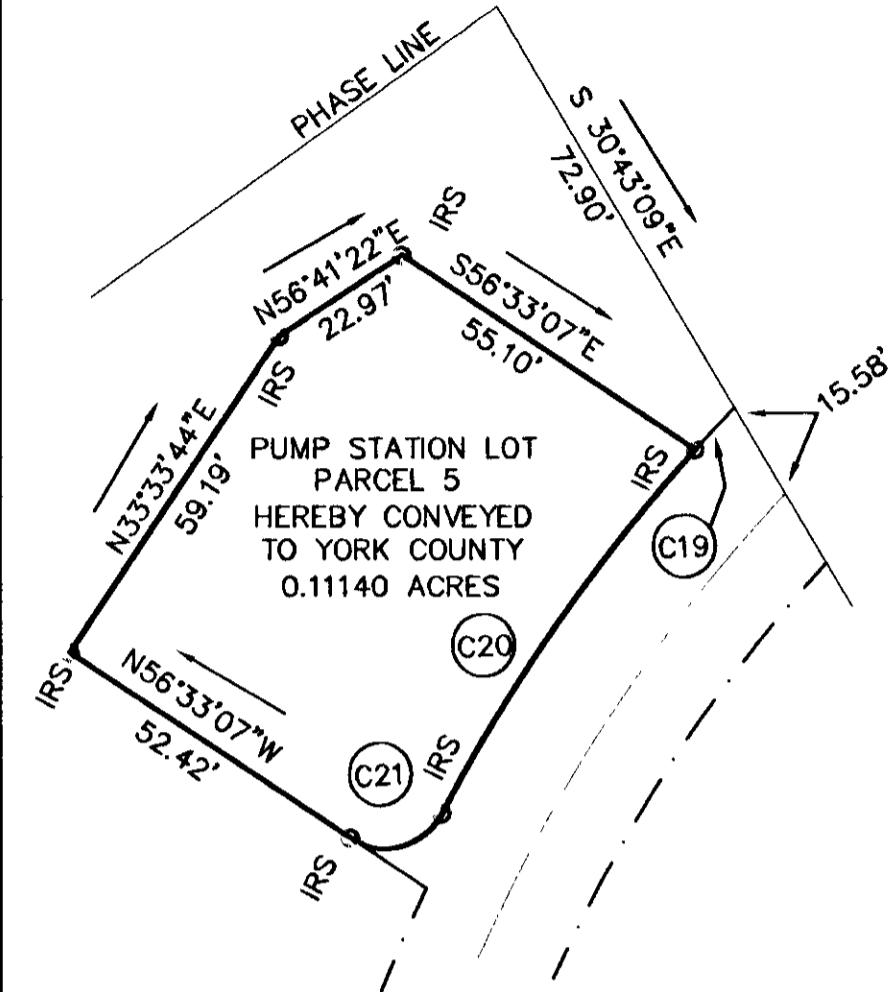
DATE: JULY 18, 2001 LAST REVISED MAY 22, 2002

Dewberry & Davis, Inc.
A Dewberry Company

Architects Engineers Planners Surveyors
9881 MAYLAND DRIVE, SUITE 201
RICHMOND, VA 23233 PHONE 804 290-7957, FAX 804 290-7928



COURSE	BEARING	DISTANCE
L1	N19°20'19"W	22.25'
L2	N10°36'09"W	4.98'
L3	N10°36'09"W	15.13'
L4	N73°29'10"E	35.18'
L5	N35°35'27"W	43.10'



CURVE	RADIUS	LENGTH	TANGENT	DELTA	CH BEARING	CHORD
C1	5628.27'	35.15'	17.57'	00°21'28"	N15°09'53"W	35.15'
C2	5854.65'	25.45'	12.72'	00°14'57"	N15°31'24"W	25.45'
C3	500.00'	75.30'	37.72'	08°37'42"	N56°56'53"E	75.23'
C4	500.00'	113.68'	57.08'	13°01'36"	N46°07'14"E	113.43'
C5	60.50'	67.54'	37.78'	63°57'47"	N35°55'58"E	64.08'
C6	500.00'	103.60'	51.98'	11°52'17"	N26°19'21"E	103.41'
C7	297.50'	111.08'	56.20'	21°23'39"	S31°53'16"W	110.44'
C8	70.50'	132.72'	96.78'	107°51'33"	S11°47'40"W	113.97'
C9	600.00'	126.78'	63.63'	12°06'25"	S26°26'25"W	126.55'
C10	60.50'	77.09'	44.78'	73°00'36"	S35°55'58"W	71.98'
C11	600.00'	143.78'	72.24'	13°43'49"	S46°14'12"W	143.44'
C12	600.00'	85.45'	42.80'	08°09'37"	S57°10'55"W	85.38'
C13	5854.65'	474.55'	237.40'	4°38'39"	S17°58'12"E	474.42'
C14	5628.27'	486.11'	243.21'	4°56'55"	S17°49'05"E	485.96'
C15	150.00'	32.00'	16.06'	12°13'20"	N67°22'29"E	31.94'
C16	550.00'	242.55'	123.28'	25°16'02"	N48°37'47"E	240.59'
C17	550.00'	149.84'	75.39'	15°36'34"	N28°11'31"E	149.38'
C18	264.40'	442.87'	272.06'	90°38'08"	N02°42'46"W	379.22'
C19	279.40'	8.98'	4.49'	01°50'30"	S43°04'29"W	8.98'
C20	279.40'	69.54'	34.95'	14°15'35"	S35°01'26"W	69.36'
C21	10.00'	16.68'	11.02'	95°33'15"	S75°40'16"W	14.81'

NOTES:
1. THIS SITE WAS REFERENCED TO YORK COUNTY GEODETIC CONTROL MONUMENT #027 AND RM#3.
2. THIS PARCEL IS NOT LOCATED IN A FEMA DEFINED FLOOD HAZARD AREA AS SHOWN ON COMMUNITY PANEL 510182-0025 B EFFECTIVE 12-16-1988. THE PROPERTY IS LOCATED IN ZONE X.

AREA TABULATION
RESIDUE PARCEL 1 33.766 ACRES +/-
PARCEL 5 0.11140 ACRES
PARCEL 1A 6.38119 ACRES
PARCEL 4 2.12044 ACRES

TOTAL AREA
PARCEL 1 42.379 +/- ACRES

PROJECT\R9901002\NPHASES\PS-RP2.DWG

APPROVED:
YORK COUNTY BOARD OF SUPERVISORS
BY: Al Maddalena, PLAT APPROVING AGENT.
DATE: 10/28/2002

COMMONWEALTH OF VIRGINIA
COUNTY OF YORK
IN THE CLERK'S OFFICE OF THE CIRCUIT COURT FOR THE COUNTY OF YORK THE 29th DAY OF October, 2002.

THIS MAP WAS PRESENTED AND ADMITTED TO RECORD AS THE LAW DIRECTS.
INSTRUMENT NO. 020021288
TESTE: Lynn S. Jenkins CLERK
BY: White, P.C.

