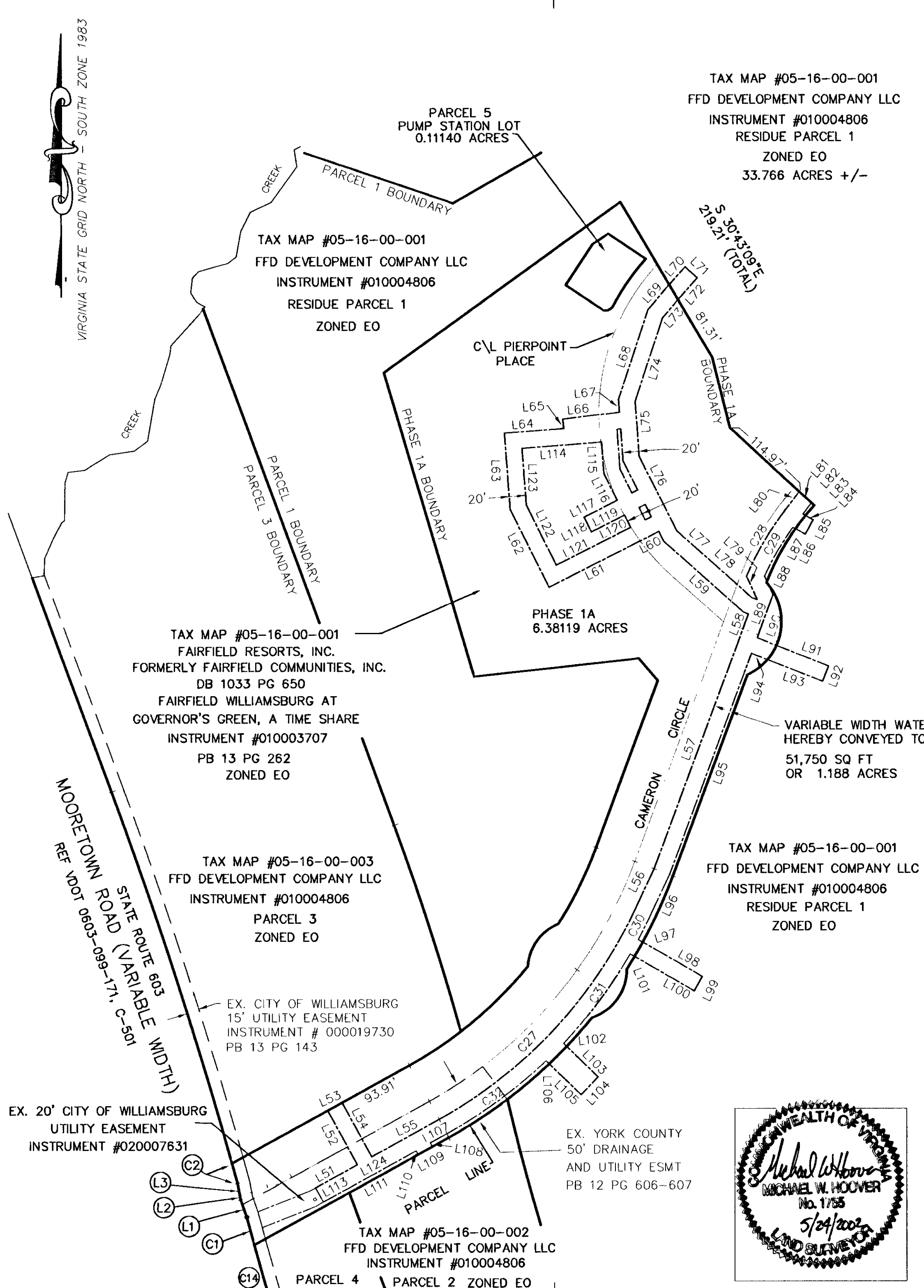


WATER LINE EASEMENT

COURSE	BEARING	DISTANCE
L51	N61°15'36"E	57.84'
L52	N28°44'12"W	75.01'
L53	N61°15'48"E	20.00'
L54	S28°44'12"W	75.01'
L55	N61°15'36"E	94.58'
C27	Rad: 565.58' Tan: 184.61' Chd: N43°09'38"E	Arc: 356.89' CA: 36°09'18" 351.00'
L56	N25°04'59"E	53.66'
L57	N20°22'40"E	329.52'
L58	N69°53'43"W	6.44'
L59	N48°21'57"W	130.17'
L60	N26°58'25"W	12.85'
L61	S63°11'51"W	149.95'
L62	N26°36'04"W	105.78'
L63	N04°20'16"W	93.20'
L64	N85°41'49"E	72.69'
L65	N06°32'25"W	11.49'
L66	N83°27'35"E	69.77'
L67	N04°12'22"W	15.85'
L68	N18°09'45"E	115.20'
L69	N40°42'53"E	39.81'
L70	N41°42'44"E	28.95'
L71	S48°17'16"E	20.00'
L72	S41°42'44"W	35.28'
L73	S40°30'16"W	29.13'
L74	S18°09'45"W	107.27'
L75	S04°12'22"E	67.00'
L76	S26°50'24"E	101.06'
L77	S48°21'57"E	122.71'
L78	S69°53'43"E	6.72'
L79	N24°36'48"W	30.93'
C28	Rad: 352.94' Tan: 45.57' Chd: N30°09'10"E	Arc: 90.64' CA: 14°42'51" 90.39'
L80	N37°30'35"E	31.18'
L81	S47°24'55"E	20.08'
L82	S37°30'35"W	17.04'
L83	S61°22'59"E	3.74'
L84	S61°22'59"E	10.46'
L85	S28°37'01"W	20.00'
L86	N61°22'59"W	13.60'
L87	N61°22'58"W	3.63'
C29	Rad: 332.94' Tan: 34.60' Chd: S30°13'19"W	Arc: 68.95' CA: 11°51'58" 68.83'
L88	S24°36'48"E	24.67'
L89	S20°24'05"W	55.74'
L90	S68°31'29"E	25.37'
L91	S68°31'29"E	68.27'
L92	S21°28'31"W	20.00'
L93	N68°31'29"W	72.14'
L94	N68°31'29"W	21.12'
L95	S20°23'01"W	286.87'
L96	S25°02'52"W	54.48'
C30	Rad: 585.58' Tan: 16.86' Chd: S26°43'54"W	Arc: 33.70' CA: 3°17'51" 33.70'
L97	S60°11'53"E	6.26'
L98	S60°11'53"E	83.77'
L99	S29°48'07"W	20.00'
L100	N60°11'53"W	83.77'
L101	N60°11'53"W	6.10'
C31	Rad: 585.58' Tan: 68.15' Chd: S36°58'35"W	Arc: 135.70' CA: 13°16'39" 135.40'
L102	S45°49'49"E	5.31'
L103	S45°49'49"E	53.40'
L104	S44°10'11"W	30.00'
L105	N45°49'49"W	53.99'
L106	N45°49'49"W	5.20'
C32	Rad: 585.58' Tan: 75.47' Chd: S53°53'41"W	Arc: 150.11' CA: 14°41'15" 149.70'
L107	S61°15'36"W	23.28'
L108	S28°44'16"E	5.00'
L109	S61°15'44"W	20.00'
L110	N28°44'16"W	5.00'
L111	S61°15'36"W	139.99'
L113	S28°44'24"E	20.00'

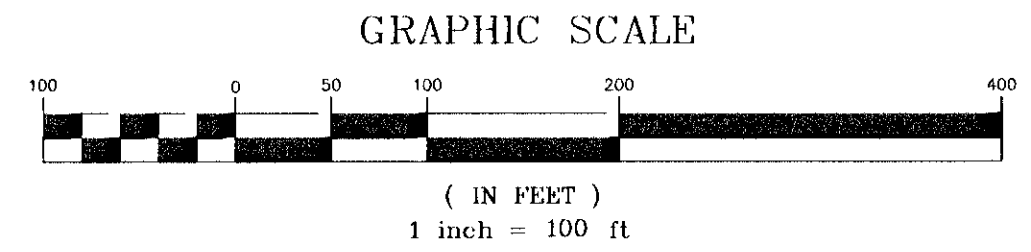


PLAT OF SUBDIVISION  
AND DEDICATION OF EASEMENTS  
PHASE 1A  
FAIRFIELD WILLIAMSBURG @  
GOVERNOR'S GREEN

BRUTON DISTRICT YORK COUNTY, VIRGINIA  
SCALE 1"=100'

DATE: JULY 18, 2001 LAST REVISED MAY 22, 2002

**Dewberry & Davis, Inc.**  
A Dewberry Company  
Architects Engineers Planners Surveyors  
9881 MAYLAND DRIVE, SUITE 201  
RICHMOND, VA 23233 PHONE 804 290-7957, FAX 804 290-7928



WATER LINE EASEMENT

COURSE	BEARING	DISTANCE
L114	N85°41'49"E	97.32'
L115	S04°17'57"E	38.37'
L116	S26°24'59"E	36.43'
L117	S63°11'08"W	45.35'
L118	S26°48'52"E	20.00'
L119	N63°11'08"E	45.21'
L120	S26°24'59"E	16.65'
L121	S63°11'51"W	101.49'
L122	N26°36'04"W	81.77'
L123	N04°20'16"W	69.26'
L124	S61°15'36"W	129.13'

APPROVED:  
YORK COUNTY BOARD OF SUPERVISORS  
BY: Al Maddalena, PLAT APPROVING AGENT.  
DATE: 10/20/2002

COMMONWEALTH OF VIRGINIA  
COUNTY OF YORK  
IN THE CLERK'S OFFICE OF THE CIRCUIT COURT FOR THE COUNTY OF  
YORK THE 29<sup>th</sup> DAY OF October, 2002.  
THIS MAP WAS PRESENTED AND ADMITTED TO RECORD AS THE LAW  
DIRECTS.  
INSTRUMENT NO. 020021288  
TESTE: Lynn S. Jenkins CLERK  
BY: White, D.C.

