

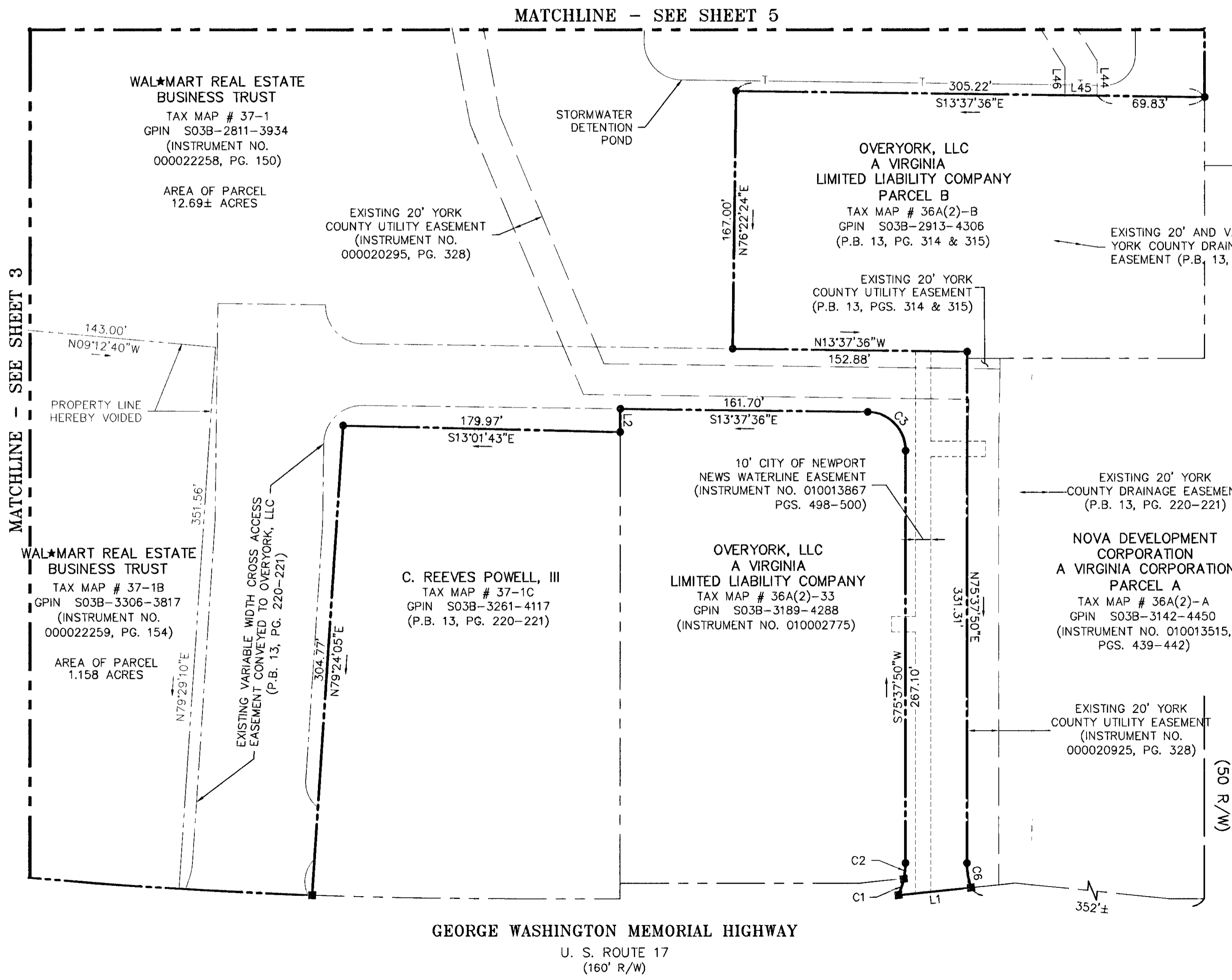
BOUNDARY LINE ADJUSTMENT  
AND RIGHT-OF-WAY DEDICATION  
PROPERTY OF

**WAL\*MART REAL ESTATE  
BUSINESS TRUST**  
A DELAWARE BUSINESS TRUST

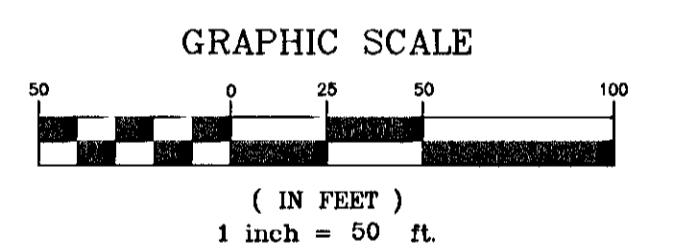
BETHEL MAGISTERIAL DISTRICT  
COUNTY OF YORK, VIRGINIA

DATE: 02/23/01	SHEET 2 OF 6	SCALE: 1"=50'
PROJECT NO: 30927.00		DRAWN BY DWP

**VHIB** *Vanasse Hangen Brustlin, Inc.*  
Transportation Land Development Environmental Services  
11832 Rock Landing Drive, Suite 203  
Newport News, Virginia 23606  
(757) 873-3386 • FAX (757) 873-0757



JOSEPH W. MILLER,  
ETUX  
RICH ACRES  
LOT 19  
TAX MAP # 36A(1)-19  
GPIN S03B-2748-4524  
(D.B. 789, PG. 802)  
ZONED R20



**APPROVED:**  
**YORK COUNTY BOARD OF SUPERVISORS**  
BY: Al Maddalena  
PLAT APPROVING AGENT  
DATE: 2-6-2003

**STATE OF VIRGINIA  
COUNTY OF YORK**  
IN THE CLERK'S OFFICE OF THE CIRCUIT COURT FOR  
THE COUNTY OF YORK, THE 11th DAY OF February, 2003,  
THIS MAP WAS PRESENTED AND ADMITTED TO RECORD AS  
THE LAW DIRECTS AS INSTRUMENT NO. 030003600  
TESTE: Lynn S. Jenkins, Clerk  
CLERK  
BY: Melaney Thomas D.C.