

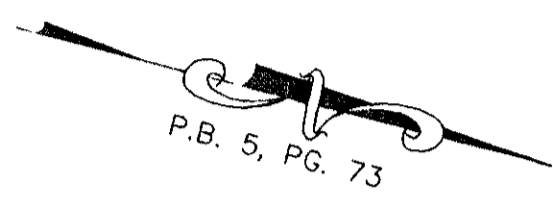
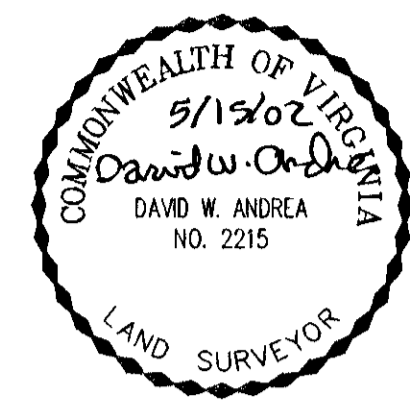
BOUNDARY LINE ADJUSTMENT
AND RIGHT-OF-WAY DEDICATION
PROPERTY OF

**WAL*MART REAL ESTATE
BUSINESS TRUST**
A DELAWARE BUSINESS TRUST

BETHEL MAGISTERIAL DISTRICT
COUNTY OF YORK, VIRGINIA

DATE: 02/23/01	SHEET 5 OF 6	SCALE: 1"=50'
PROJECT NO: 30927.00	DRAWN BY: DWP	

VHB *Vanasse Hangen Brustlin, Inc.*
Transportation Land Development Environmental Services
11832 Rock Landing Drive, Suite 203
Newport News, Virginia 23606
(757) 873-3386 • FAX (757) 873-0757



APPROVED:
YORK COUNTY BOARD OF SUPERVISORS

BY: *Al Maddalena*
PLAT APPROVING AGENT

DATE: 2-3-2003

**STATE OF VIRGINIA
COUNTY OF YORK**

IN THE CLERK'S OFFICE OF THE CIRCUIT COURT FOR
THE COUNTY OF YORK, THE 11th DAY OF February, 2003,
THIS MAP WAS PRESENTED AND ADMITTED TO RECORD AS
THE LAW DIRECTS AS INSTRUMENT NO. 0300023600

TESTE: *Lynn S. Jenkins*, Clerk
CLERK

BY: *Melaney Thomas*, D.C.

VIRGINIA ALISON BAGWELL
LOT 26A
RICH ACRES
TAX MAP # 36A(2)-26A
GPIN S03A-2428-4412
(D.B. 1036, PG. 798)

ROBERT L. STRICKLAND
LOT 26
RICH ACRES
TAX MAP # 36A(2)-26
GPIN S03B-2525-4438

ALLEN B. MAGRUDER, ET UX
LOT 20
RICH ACRES
TAX MAP # 36A(1)-20
GPIN S03B-2627-4491
(D.B. 697, PG. 309)

**WAL MART REAL ESTATE
BUSINESS TRUST**
TAX MAP # 37-1
GPIN S03B-2811-3934
(INSTRUMENT NO.
000022258, PG. 150)

EXISTING 20' YORK
COUNTY UTILITY EASEMENT
(INSTRUMENT NO.
000020925, PG. 328)

20' AND VARIABLE
WIDTH DRAINAGE
EASEMENT HEREBY
CONVEYED TO THE
COUNTY OF YORK

20' AND VARIABLE WIDTH
DRAINAGE EASEMENT
HEREBY CONVEYED TO THE
COUNTY OF YORK

RODNEY W. BATTS, TRUSTEE
TAX MAP # 36A(3)-05
GPIN S03A-2307-3723
(D.B. 1012, PG. 853)

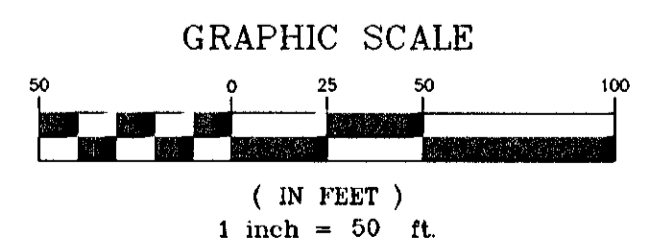
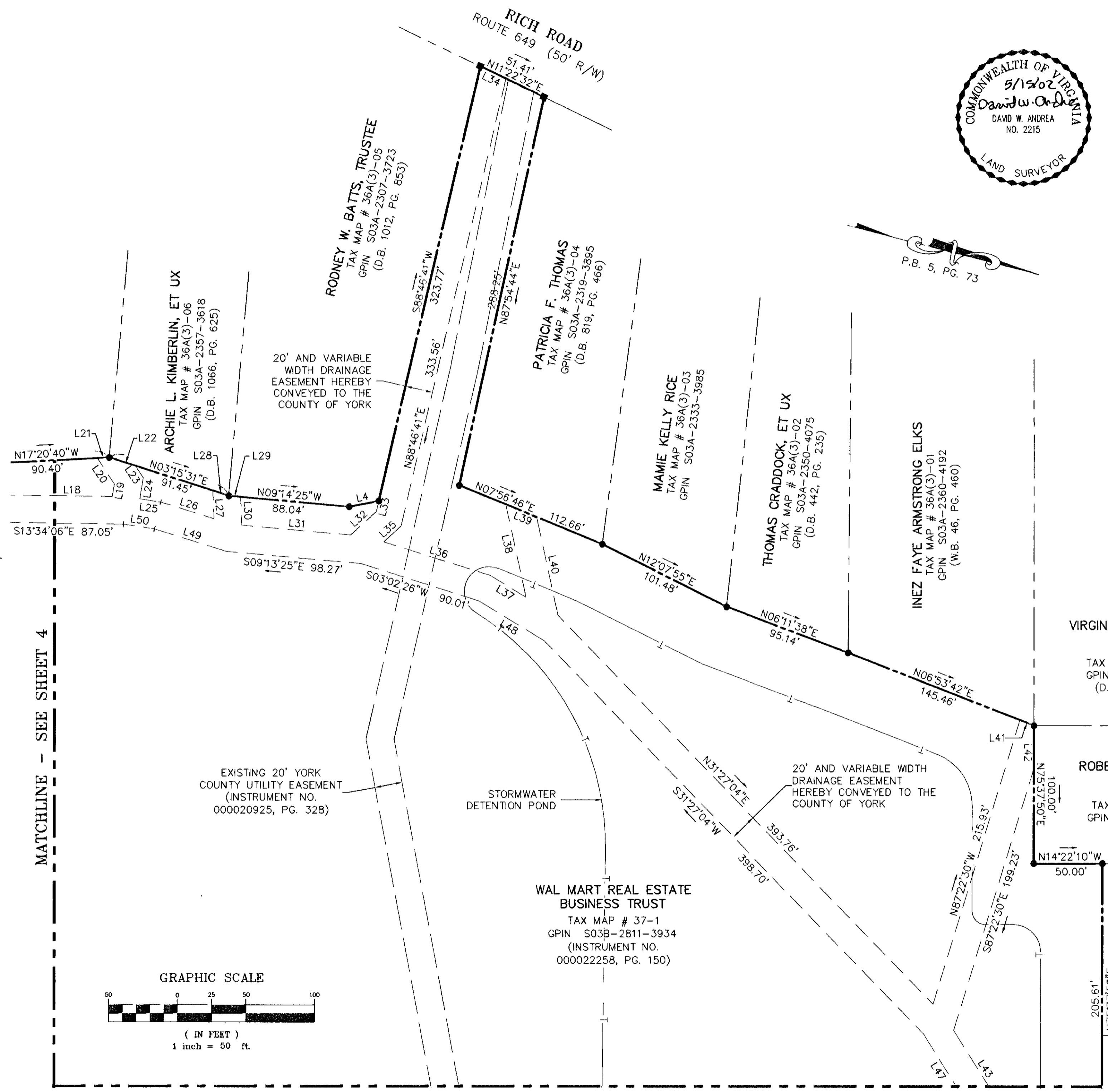
PATRICIA F. THOMAS
TAX MAP # 36A(3)-04
GPIN S03A-2319-3895
(D.B. 819, PG. 466)

MAMIE KELLY RICE
TAX MAP # 36A(3)-03
GPIN S03A-2333-3985

THOMAS CRADDOCK, ET UX
TAX MAP # 36A(3)-02
GPIN S03A-2350-4075
(D.B. 442, PG. 235)

INEZ FAYE ARMSTRONG ELKS
TAX MAP # 36A(3)-01
GPIN S03A-2360-4192
(W.B. 46, PG. 460)

ARCHIE L. KIMBERLIN, ET UX
TAX MAP # 36A(3)-06
GPIN S03A-2357-3618
(D.B. 1066, PG. 625)



MATCHLINE - SEE SHEET 4

MATCHLINE - SEE SHEET 2

\\vncorp\projects\30927\cad\plans\30927-pl_ADI.dwg, 05/01/02 08:23:22 AM, D:\prints, CAD-NW\500.dwg