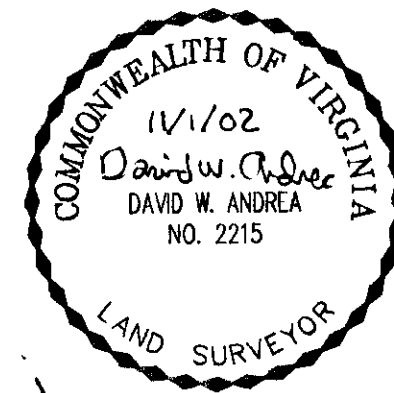
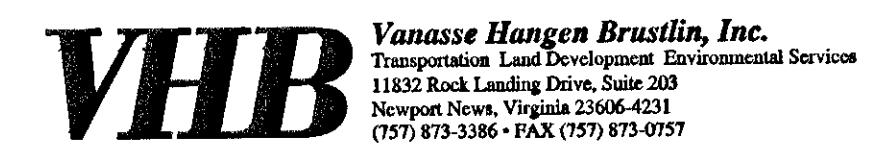


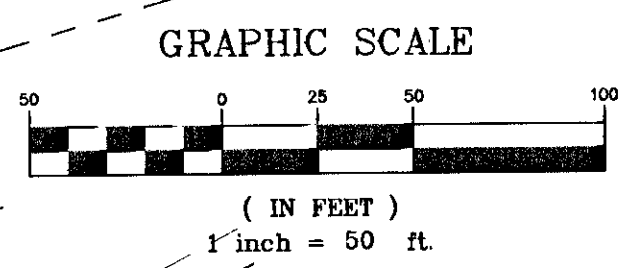
PLAT OF SUBDIVISION
THE GREENLANDS
 PHASE FOUR
 BETHEL MAGISTERIAL DISTRICT
 COUNTY OF YORK, VIRGINIA



DATE: 8/15/02 SHEET 5 OF 6 SCALE: 1"=50'
 PROJECT NO: 30858.00 DRAWN BY: DWP



NOW OR FORMERLY
 COVENTRY PUD
 FERGUSON GLADE SECTION 2E
 (P.B. 11, PG. 588-589)
 TAX PARCEL NO.
 37-34-2E-LOT#

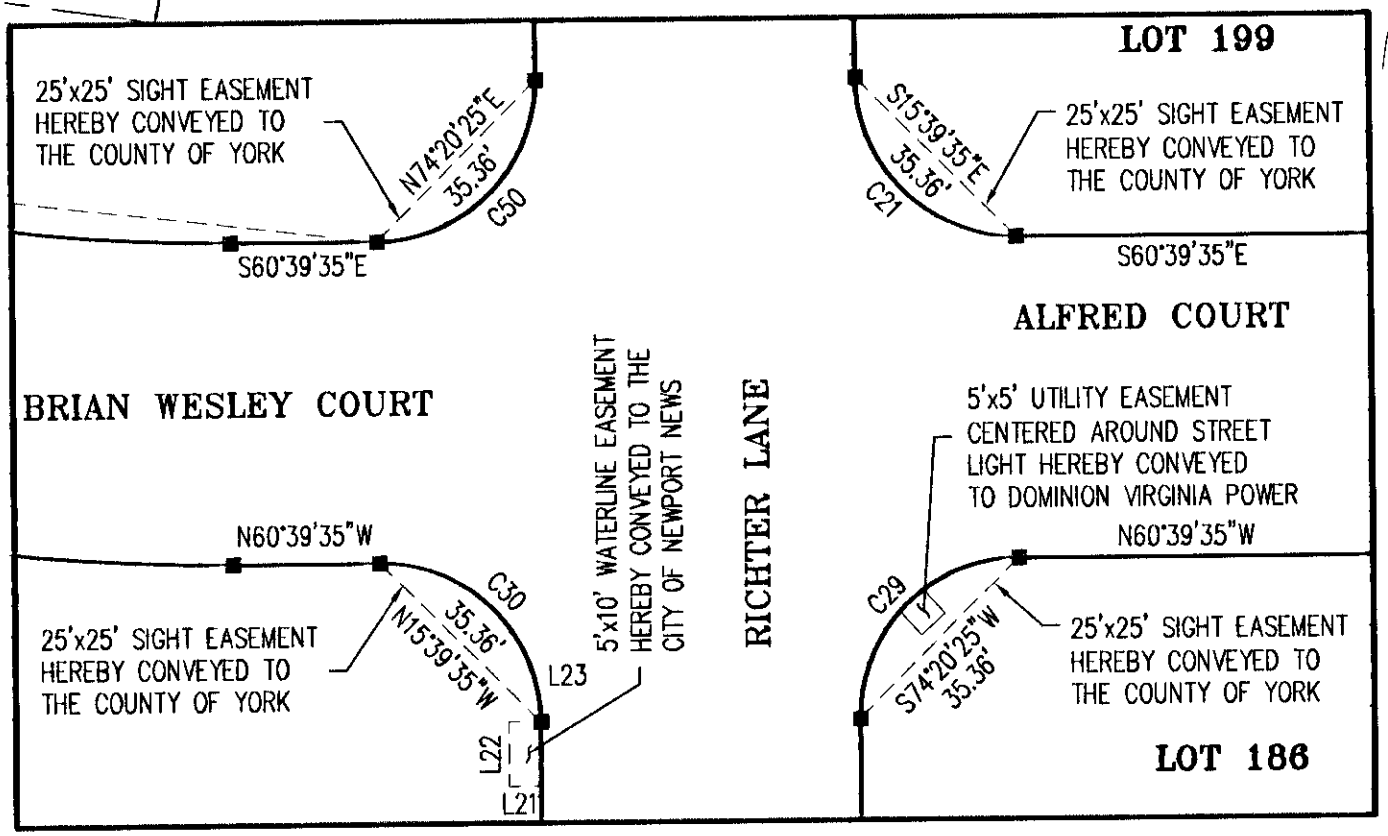


VARIABLE WIDTH LINE OF SIGHT
 EASEMENT HEREBY CONVEYED TO
 THE COMMONWEALTH OF VIRGINIA
 DEPT. OF TRANSPORTATION
 (N54°05'06"W 103.79')

LEGEND

- INDICATES IRON ROD FOUND
- INDICATES IRON ROD TO BE SET
- INDICATES V.D.H. CONC. MON. FOUND
- INDICATES CONC. MON. TO BE SET
- INDICATES APPROXIMATE TOP OF BANK
- INDICATES APPROXIMATE EDGE OF WATER
- INDICATES EXISTING 20' COUNTY OF YORK DRAINAGE EASEMENT (D.B. 1046, PG. 219-234) HEREBY VACATED.

NOTE:
 SEE SHEET SIX FOR LINE
 AND CURVE DATA TABLES.



DETAIL
 SCALE 1"=30'

APPROVED:
 YORK COUNTY BOARD OF SUPERVISORS
 BY: *Al Maddalena*
 PLAT APPROVING AGENT
 DATE: *2/20/2003*

STATE OF VIRGINIA
COUNTY OF YORK
 IN THE CLERK'S OFFICE OF THE CIRCUIT COURT FOR
 THE COUNTY OF YORK, THE *11th* DAY OF *March*, 2003.
 THIS MAP WAS PRESENTED AND ADMITTED TO RECORD AS
 THE LAW DIRECTS AS INSTRUMENT NO. *030005772*.
 TESTE: *Lynn S. Jenkins* CLERK
 BY: *Lisa Brogden, D.C.*
 FILE # 30858-4-PLAT