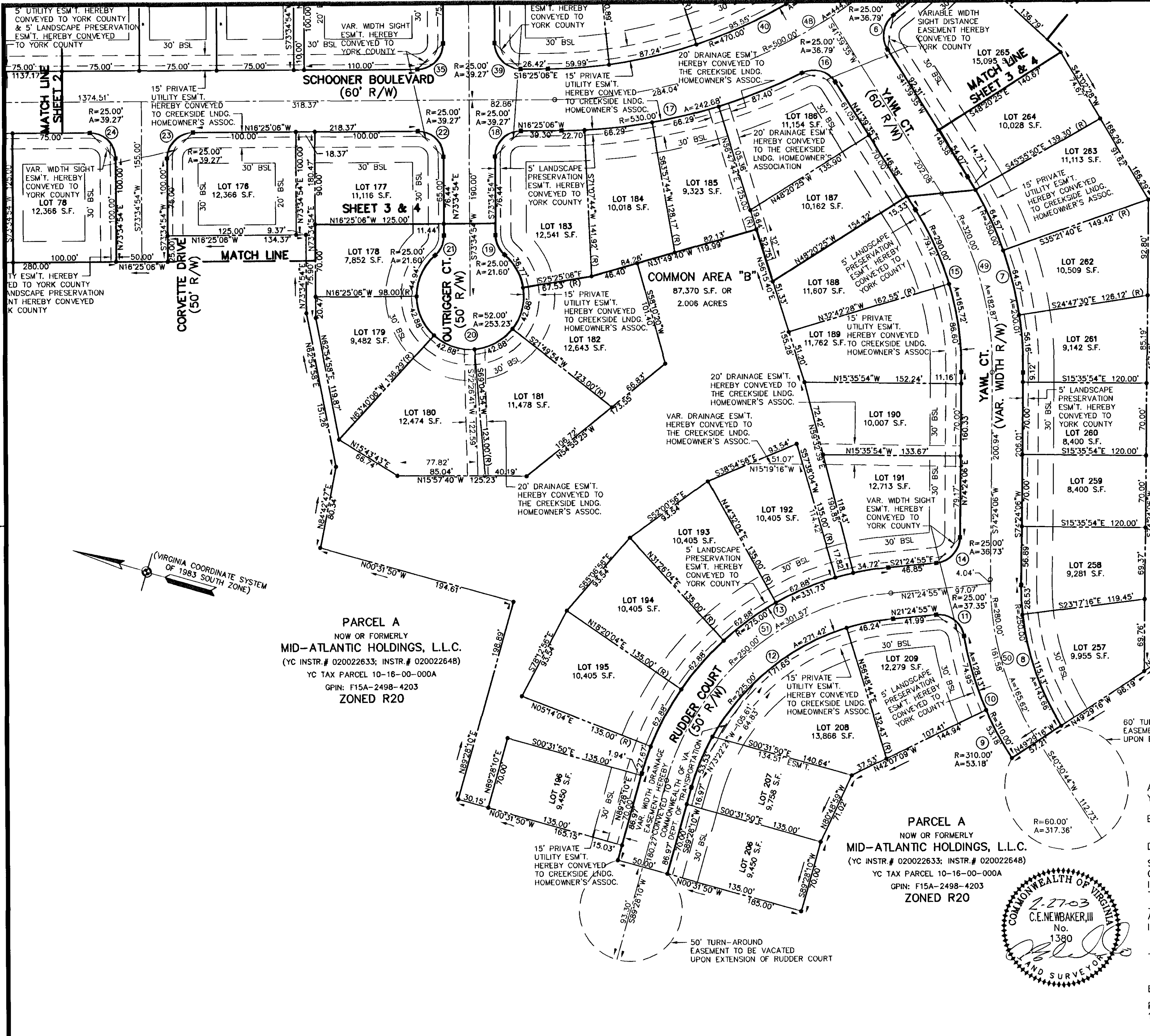
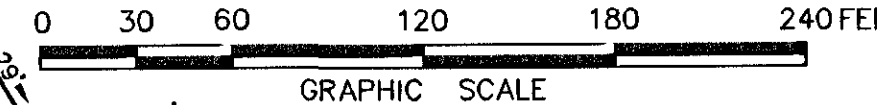


**SUBDIVISION PLAT
CREEKSIDE LANDING
SECTION ONE**

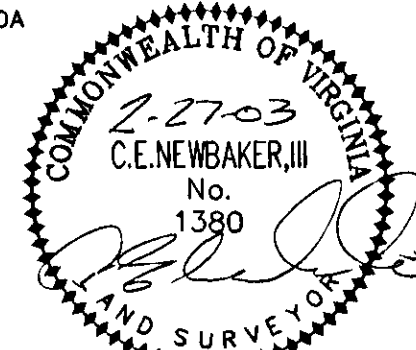
BRUTON DISTRICT - COUNTY OF YORK, VIRGINIA
SCALE: 1" = 60' MARCH 14, 2003
THE SIRINE GROUP, LTD.
SURVEYORS • ENGINEERS • PLANNERS
4794 GEORGE WASHINGTON MEMORIAL HIGHWAY
U.S. ROUTE 17
P.O. BOX 450
WHITE MARSH, VIRGINIA 23183

SHEET 5 OF 5



PARCEL A
NOW OR FORMERLY
MID-ATLANTIC HOLDINGS, L.L.C.
(YC INSTR.# 020022633; INSTR.# 020022648)
YC TAX PARCEL 10-16-00-000A
GPIN: F15A-2498-4203
ZONED R20

PARCEL A
NOW OR FORMERLY
MID-ATLANTIC HOLDINGS, L.L.C.
(YC INSTR.# 020022633; INSTR.# 020022648)
YC TAX PARCEL 10-16-00-000A
GPIN: F15A-2498-4203
ZONED R20



APPROVED:
YORK COUNTY BOARD OF SUPERVISORS
BY: Al Maddalena
PLAT APPROVING AGENT
DATE: 5/7/03

STATE OF VIRGINIA
COUNTY OF YORK
IN THE CLERK'S OFFICE OF THE CIRCUIT COURT FOR
THE COUNTY OF YORK, VIRGINIA, THE 12th DAY OF
May, 2003, THIS PLAT WAS PRESENTED
AND ADMITTED TO RECORD AS THE LAW DIRECTS AS
INSTRUMENT NUMBER 030013168 8:18 AM

TESTE: Lynn S. Jenkins
CLERK

BY: Laura McAllister, DC

PROPERTY IS ASSESSOR'S PARCEL NUMBER:
10-16-00-000A1; GPIN: F15B-4207-3126