

PROPERTY LINE VACATION
 BETWEEN LOT 2 AND LOT 3 IN
**BURCHER
 SUBDIVISION**

GRAFTON DISTRICT - YORK COUNTY, VIRGINIA

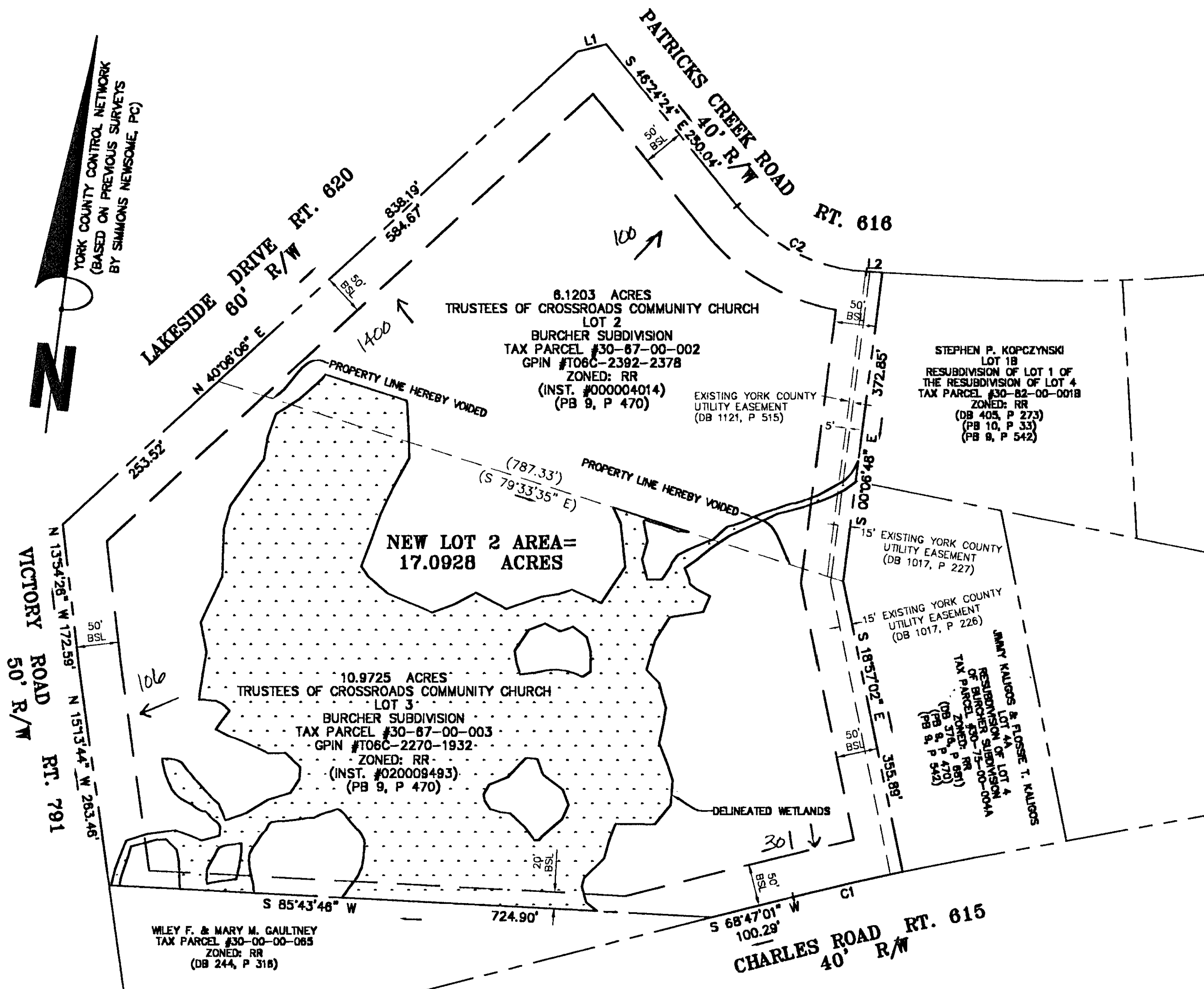
OCTOBER 9, 2002

Simmons Newsome, P.C.

Surveyors Planners
 110A Dare Road
 Yorktown, Virginia 23692
 Phone (757) 898-4914 Fax (757) 898-4914



1" = 100'
 SHEET 2 OF 2



- SURVEYOR'S NOTES:**
1. THIS PLAT DOES NOT REPRESENT A CURRENT FIELD SURVEY.
 2. PHYSICAL IMPROVEMENTS TO THESE PROPERTIES NOT SHOWN.
 3. MONUMENTS ARE NOT REQUIRED TO BE SET FOR THIS PLAT.

LINE TABLE		
LINE	LENGTH	BEARING
L1	35.22	N68°50'10"E
L2	19.41	N85°53'32"E

BSL=BUILDING SETBACK LINE
 DB=DEED BOOK
 RR=RURAL RESIDENTIAL
 PB=PLAT BOOK
 INST=INSTRUMENT

CURVE TABLE						
CURVE	LENGTH	RADIUS	DELTA	TANGENT	CHORD	CHORD BEARING
C1	134.28'	3395.98'	2°15'58"	67.15'	134.27'	S69°54'59"W
C2	178.99'	215.00'	47°41'59"	95.05'	173.87'	S70°15'24"E

APPROVED:
 YORK COUNTY BOARD OF SUPERVISORS
 BY: Al Maddalena
 Plat Approving Agent
 DATE: 6/10/03

STATE OF VIRGINIA
 COUNTY OF YORK

In the Clerk's Office of the Circuit Court for the
 County of York the 11th day of June, 2003 this
 map was presented and admitted to record as
 the law directs in Instrument # 030016119 9:23 am

TESTE: Lyon S. Jenkins
 Clerk
 BY: Thomas Cannon D.C.

02-10-2672
 SHEET 2.DWG