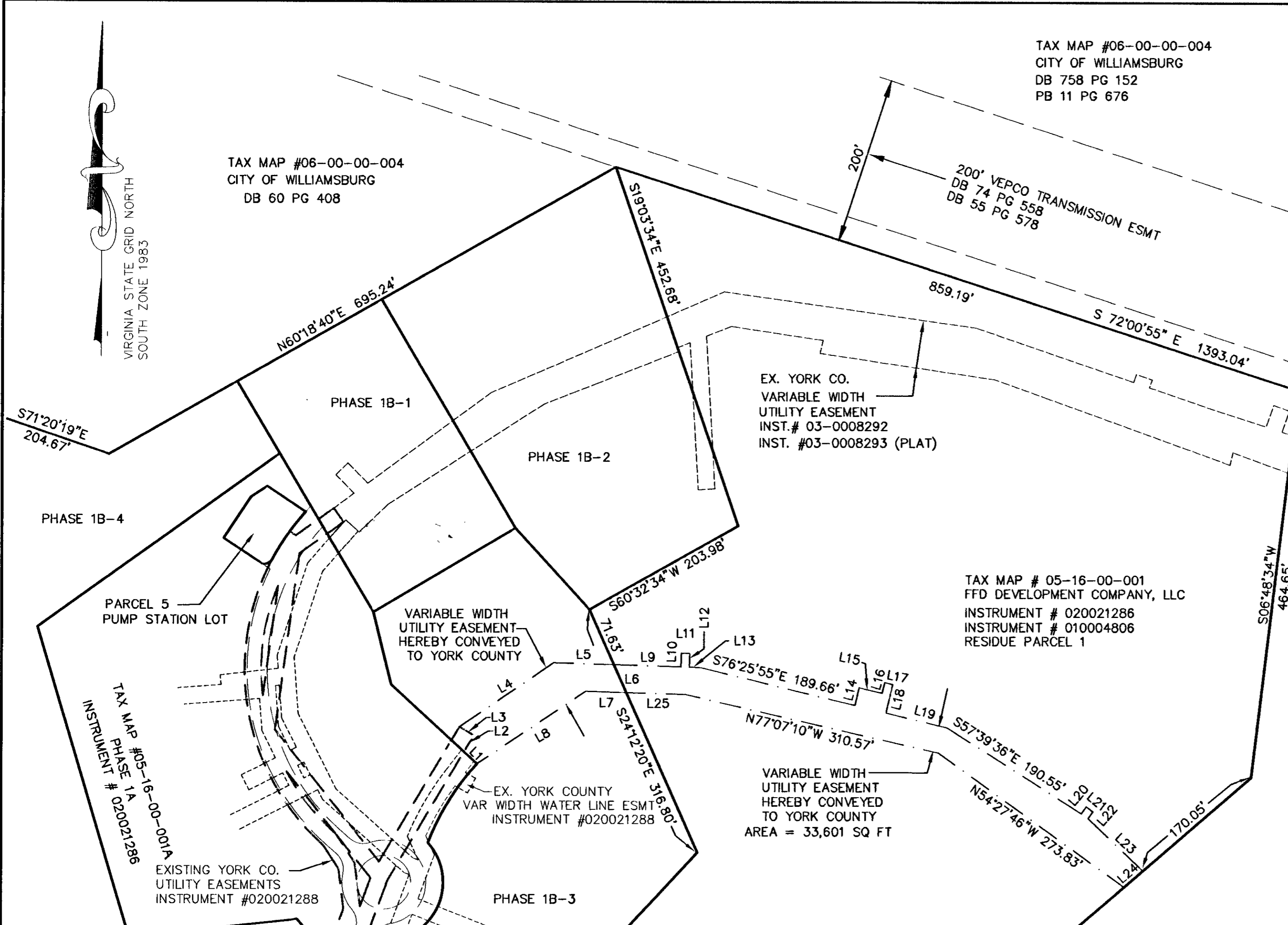


PLAT OF SUBDIVISION
AND DEDICATION OF EASEMENTS
PHASE 1B
FAIRFIELD WILLIAMSBURG @
GOVERNOR'S GREEN
DATE: SEPTEMBER 12, 2002 LAST REVISED APRIL 3, 2003
BRUTON DISTRICT YORK COUNTY, VIRGINIA
SCALE 1"=100'

Dewberry & Davis, Inc.
A Dewberry Company
Architects Engineers Planners Surveyors
9881 MAYLAND DRIVE, SUITE 201
RICHMOND, VA 23233 PHONE 804 290-7957, FAX 804 290-7928



LINE TABLE

LINE	BEARING	DISTANCE
L1	N47°24'55"W	21.16'
L2	N30°42'24"E	22.88'
L3	N59°17'36"W	20.00'
L4	N55°43'23"E	136.09'
L5	S88°24'41"E	71.75'
L6	S24°12'20"E	36.30'
L7	N88°17'39"W	48.09'
L8	S56°08'00"W	156.45'
L9	S88°24'41"E	80.32'
L10	N01°42'18"E	16.09'
L11	S88°16'43"E	10.00'
L12	S01°42'18"W	16.08'
L13	S87°01'22"E	14.04'
L14	N12°46'56"E	21.68'
L15	S76°35'00"E	28.34'
L16	N13°12'39"E	12.96'
L17	S77°08'08"E	10.00'
L18	S13°12'39"W	34.84'
L19	S76°25'55"E	75.09'
L20	N35°32'14"E	9.98'
L21	S54°26'47"E	10.00'
L22	S35°32'14"W	9.87'
L23	S46°35'24"E	90.53'
L24	S49°14'15"W	29.73'
L25	N88°17'39"W	70.78'
L26	N24°12'20"W	36.30'

APPROVED:
YORK COUNTY BOARD OF SUPERVISORS
BY: *Al Maddalena*, PLAT APPROVING AGENT
DATE: 7-10-03

COMMONWEALTH OF VIRGINIA
COUNTY OF YORK
IN THE CLERK'S OFFICE OF THE CIRCUIT COURT FOR THE COUNTY OF YORK THE 11th DAY OF July, 2003.
THIS MAP WAS PRESENTED AND ADMITTED TO RECORD AS THE LAW DIRECTS.
INSTRUMENT NO. 020020999 9:16 am
TESTE: *Lynn S. Jenkins* CLERK
BY: *Lisa Broder, P.C.*

