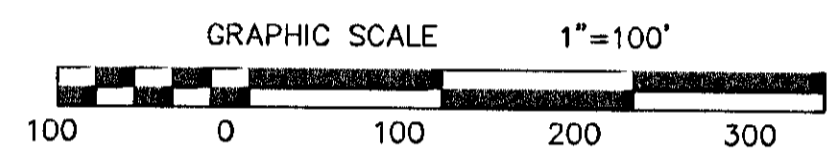
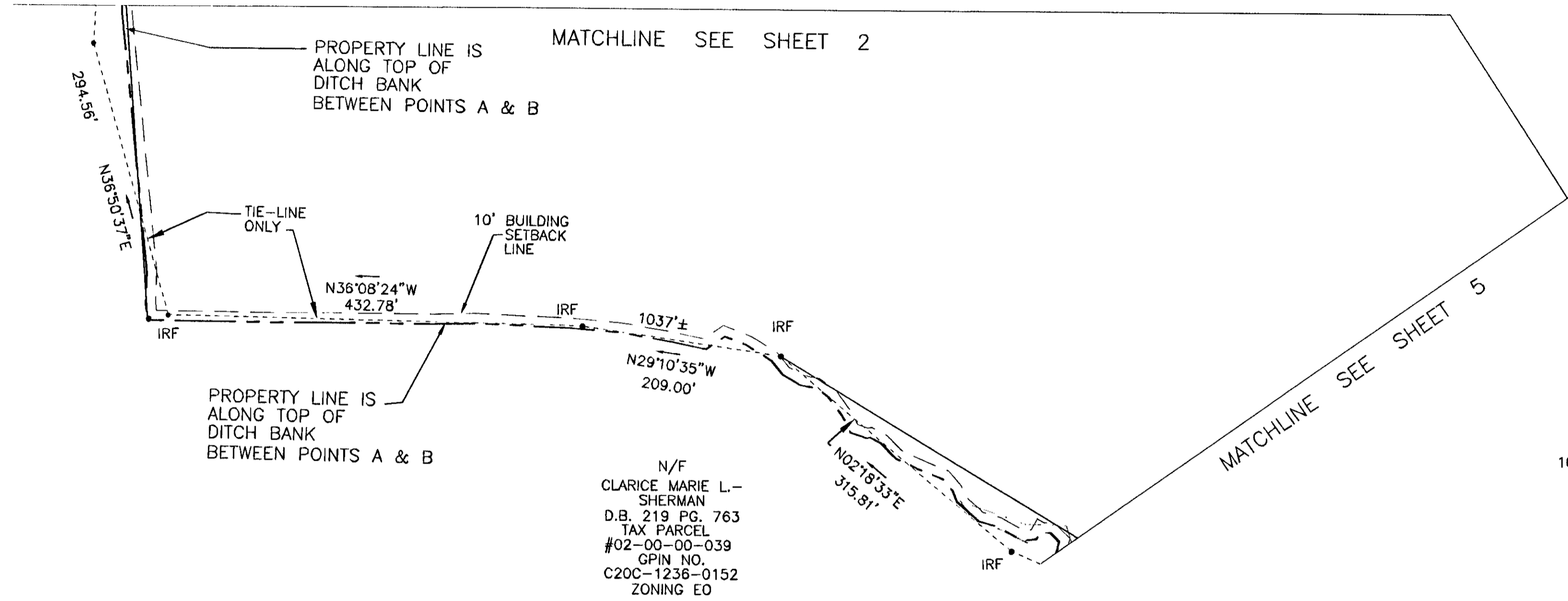


YORK COUNTY DATUM

SUBDIVISION OF
 THE PROPERTY OF:
**THE RUBY F. STEVENS
 LIMITED LIABILITY COMPANY**
 BRUTON DISTRICT YORK COUNTY, VIRGINIA
 DATE: 08/05/03 SCALE: 1" = 100'
 SHEET 4 OF 5

**LANDMARK
 DESIGN GROUP**
 Engineers • Planners • Surveyors
 Landscape Architects • Environmental Consultants
 4029 IRONBOUND ROAD SUITE 100
 WILLIAMSBURG, VIRGINIA 23188
 (757) 253-2975 FAX: (757) 229-0049



N/F
 CLARICE MARIE L.-
 SHERMAN
 D.B. 219 PG. 763
 TAX PARCEL
 #02-00-00-039
 GPIN NO.
 C20C-1236-0152
 ZONING EO

APPROVED:
 YORK COUNTY BOARD OF SUPERVISORS
 BY: [Signature]
 PLAT APPROVING AGENT

DATE: 8/8/03

STATE OF VIRGINIA, COUNTY OF YORK
 IN THE CLERK'S OFFICE OF THE CIRCUIT COURT FOR THE
 COUNTY OF YORK THE 8th DAY OF August 2003, THIS
 MAP WAS PRESENTED AND ADMITTED TO RECORD AS THE LAW
 DIRECTS AS INSTRUMENT NO. 030024958

TESTE: Lynn S. Jenkins l:clerk
 CLERK

BY: [Signature] P.L.

2002220-100.04 WOLF LODGE SUBDIVIDE 4 PARCELS\PARCEL-B-PLAT.dwg