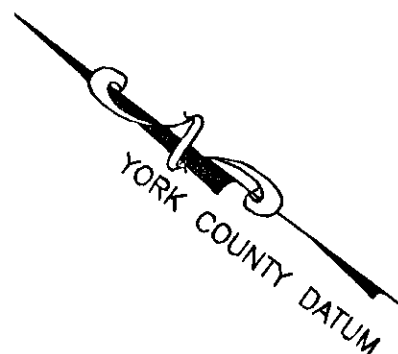


MATCHLINE SEE SHEET 3

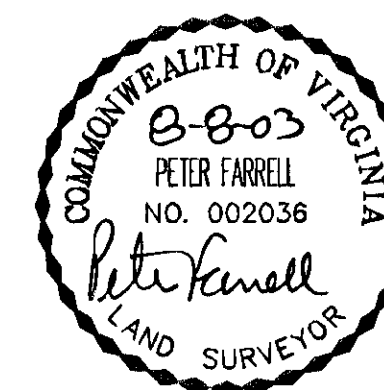
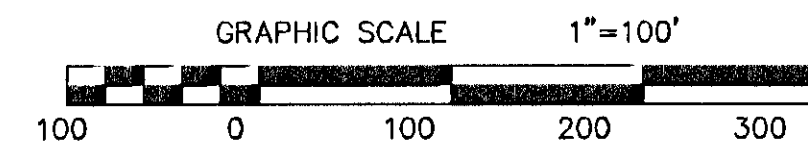
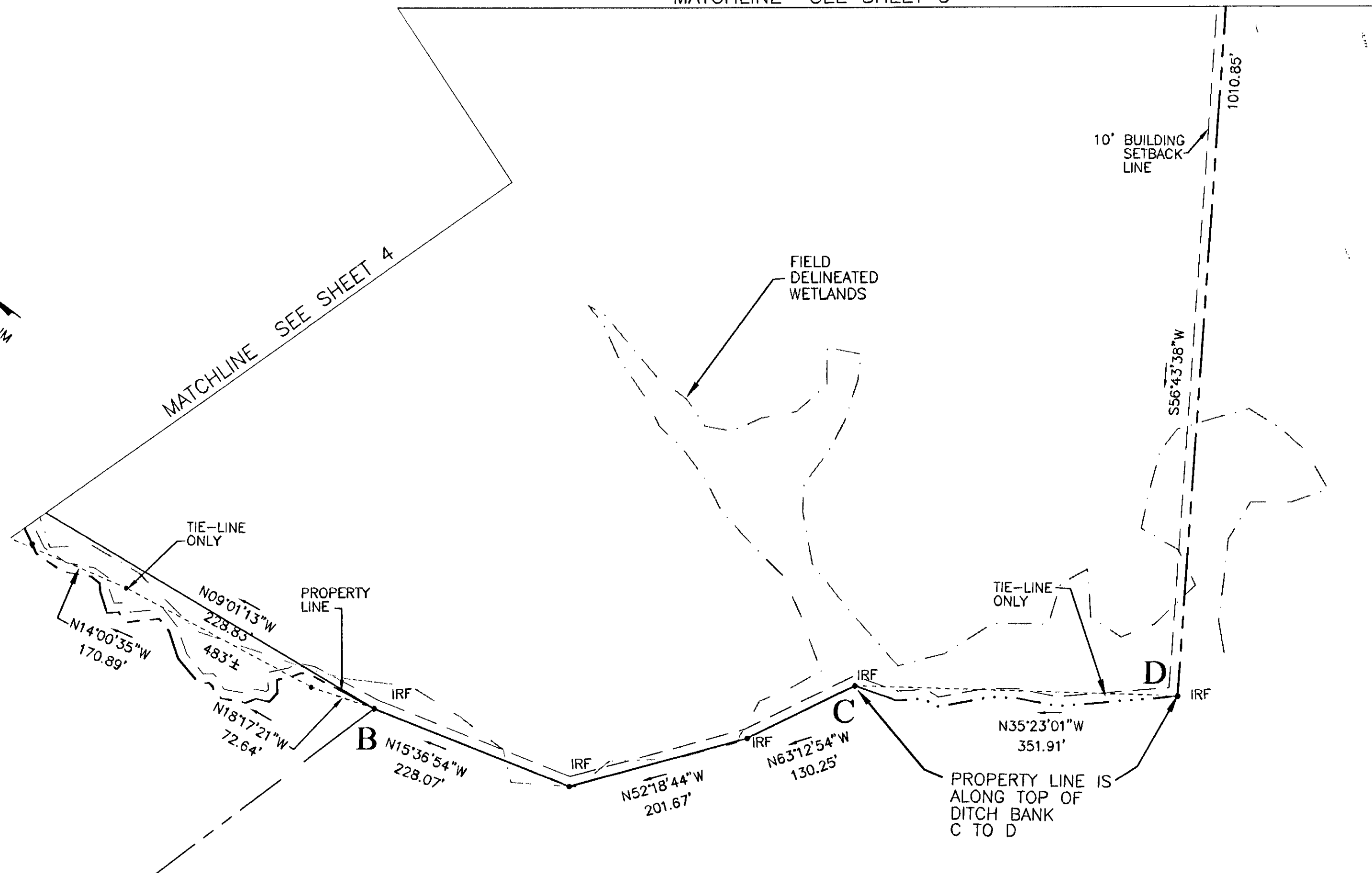
SUBDIVISION OF  
THE PROPERTY OF:  
**THE RUBY F. STEVENS  
LIMITED LIABILITY COMPANY**  
BRUTON DISTRICT YORK COUNTY, VIRGINIA  
DATE: 08/05/03 SCALE: 1" = 100'  
SHEET 5 OF 5

**LANDMARK  
DESIGN GROUP**

Engineers • Planners • Surveyors  
Landscape Architects • Environmental Consultants  
4029 IRONBOUND ROAD SUITE 100  
WILLIAMSBURG, VIRGINIA 23188  
(757) 253-2975 FAX: (757) 229-0049



MATCHLINE SEE SHEET 4



N/F  
HENRY JACKSON DARST, JR.  
D.B. 787 PG. 465  
TAX PARCEL  
#02-00-00-035  
GPIN NO. C19A-2138-3145  
ZONING RR

PROPERTY LINE IS  
ALONG TOP OF  
DITCH BANK  
C TO D

APPROVED:  
YORK COUNTY BOARD OF SUPERVISORS  
BY: *John Hudley*  
PLAT APPROVING AGENT  
DATE: 8/8/03

STATE OF VIRGINIA, COUNTY OF YORK  
IN THE CLERK'S OFFICE OF THE CIRCUIT COURT FOR THE  
COUNTY OF YORK THE 5th DAY OF August 2003, THIS  
MAP WAS PRESENTED AND ADMITTED TO RECORD AS THE LAW  
DIRECTS AS INSTRUMENT NO. 030024958  
TESTE: Lynn S. Jenkins 1:06pm  
CLERK  
BY: Stacy M. Alavi D.C.