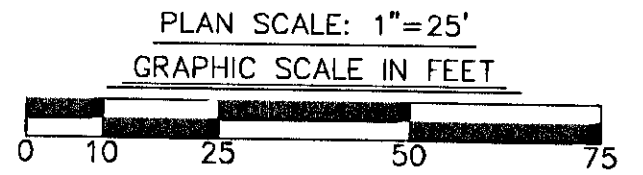


VICINITY MAP SCALE: 1"=2000'

NOTES:

1. THE RECORDATION OF THIS PLAT SHALL OPERATE TO TRANSFER TO THE COUNTY OF YORK ANY EASEMENT INDICATED ON THE PLAT TO CREATE A PUBLIC RIGHT-OF-PASSAGE OVER THE SAME, UNLESS OTHERWISE NOTED ON THIS PLAT.
2. EASEMENTS CONVEYED TO THE COUNTY BY RECORDATION OF THIS PLAT SHALL BE EXCLUSIVE TO THE COUNTY, UNLESS OTHERWISE NOTED. CONVEYANCE OF SUCH EASEMENTS TO THE COUNTY ALSO INCLUDE: (i) THE COUNTY'S RIGHT OF INGRESS AND EGRESS OVER THE OWNER'S LAND ADJACENT TO THE EASEMENT AS NECESSARY TO INSPECT, MAINTAIN AND OPERATE THE COUNTY'S FACILITIES WITHIN THE EASEMENT AND (ii) THE RIGHT OF THE COUNTY TO ASSIGN TO OTHERS, FROM TIME TO TIME, THE RIGHT TO LOCATE FACILITIES THEREIN SERVING THE PUBLIC, INCLUDING, BUT NOT LIMITED TO, WATER, ELECTRIC, TELEPHONE, COMMUNICATIONS, AND GAS UTILITY FACILITIES.
3. HORIZONTAL DATUM IS BASED ON THE YORK COUNTY GEODETIC CONTROL NETWORK OF MARCH 1989, VIRGINIA COORDINATE SYSTEM, SOUTH ZONE, NAD 83.
4. EXTERIOR PROPERTY LINES AND RIGHT OF WAY LINES FOR LOT 32 AND LOT 26 ARE BASED ON YORKTOWN SURVEY CONTROL MAP PB. 8, PG. 469A. INTERIOR PARCEL LINES WITHIN LOT 32 AND LOT 26 ARE BASED ON DIGITAL DATA SUPPLIED BY YORK COUNTY GEOGRAPHIC INFORMATION SERVICES.
5. THIS PLAT WAS PREPARED WITHOUT THE BENEFIT OF A TITLE REPORT AND THEREFORE MAY NOT DEPICT ALL THE TITLE MATTERS AFFECTING THE PROPERTY SHOWN HEREON.
6. BEARINGS SHOWN ON THIS PLAT DO NOT NECESSARILY REFLECT BEARINGS SHOWN ON PLATS OF RECORD, BUT ARE BASED ON COUNTY OF YORK, VA 1989 HORIZONTAL CONTROL MONUMENTATION. (VA STATE PLANE COORDINATES-SOUTH ZONE-NAD 1983), AS PER COUNTY OF YORK SUBDIVISION ORDINANCE 20.5-57.
7. REFERENCE: NPS TRACT 05-167.

PLAT SHOWING AREA OF EASEMENT  
TO BE QUITCLAIMED FROM  
THE UNITED STATES OF AMERICA  
TO THE  
COUNTY OF YORK  
ACROSS A PORTION OF  
FORMER LOT 32  
YORKTOWN SURVEY  
CONTROL MAP  
NELSON DISTRICT, YORK COUNTY, VIRGINIA  
DATE: JULY 29, 2003

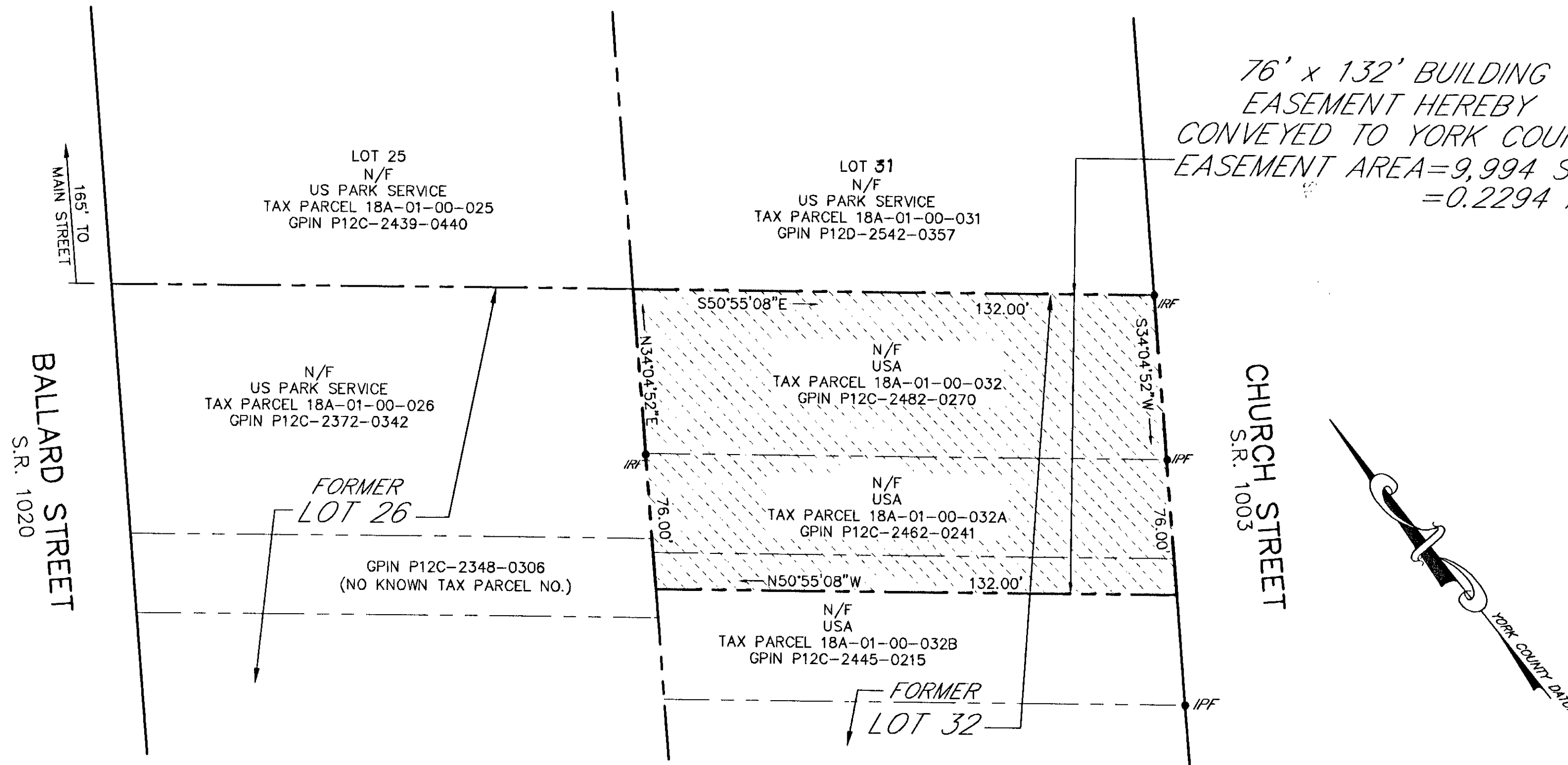


**LANDMARK  
DESIGN GROUP**  
Engineers • Planners • Surveyors  
Landscape Architects • Environmental Consultants

4029 Ironbound Road  
Suite 100  
Williamsburg, VA 23188  
Tel. (757) 253-2975  
Fax (757) 229-0049  
Email: lmdg@landmarkdg.com

5544 Greenwich Road  
Suite 200  
Virginia Beach, VA 23462  
Tel. (757) 473-2000  
Fax (757) 497-7933  
Email: lmdg@landmarkdg.com

76' x 132' BUILDING  
EASEMENT HEREBY  
CONVEYED TO YORK COUNTY  
EASEMENT AREA=9,994 S.F.  
=0.2294 AC.



APPROVED:  
YORK COUNTY BOARD OF SUPERVISORS  
BY: Al Maddalena  
PLAT APPROVING AGENT  
DATE: 8/21/03

STATE OF VIRGINIA  
COUNTY OF YORK  
IN THE CLERK'S OFFICE OF THE CIRCUIT COURT FOR THE  
COUNTY OF YORK THE 5th DAY OF Sept, 2003 THIS  
MAP WAS PRESENTED AND ADMITTED TO RECORD AS THE LAW  
DIRECTS AS INSTRUMENT NO. 030028640  
TESTE:  
CLERK Lynn S. Jenkins 2:28pm  
DATE: by: Lisa Brogden, P.C.

2003 SEP -5 PM 2:28