

SUBDIVISION PLAT

SKIMINO LANDING ESTATES PHASE 3-A

BRUTON DISTRICT
COUNTY OF YORK, VIRGINIA
DATE: MARCH 14, 2003

RECORD NORTH
P.B. 12, PG. 646-649



Committed to Excellence

ENGINEERS • ARCHITECTS • SURVEYORS

449 McLAWS CIRCLE, P.O. BOX 3505 WILLIAMSBURG, VIRGINIA 23187
(757)253-0673 FAX: (757)253-2319 E-MAIL: williamsburg@djginc.com
NORFOLK - VIRGINIA BEACH AREA (757)874-5015

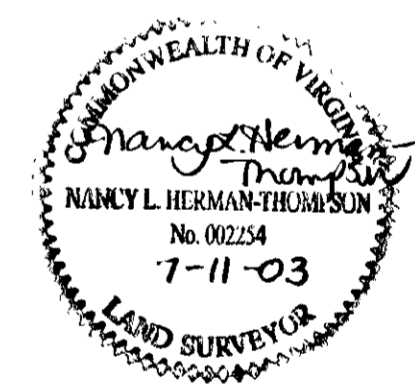
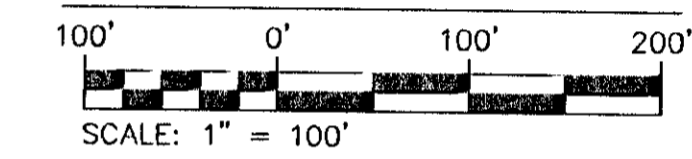
DRAWN BY: DNW

SHEET 2 OF 4

CHECKED: NLHT

JOB NO. 2010730

GRAPHIC SCALE



APPROVED: YORK COUNTY
BOARD OF SUPERVISORS

BY: Al Maddalena
PLAT APPROVING AGENT

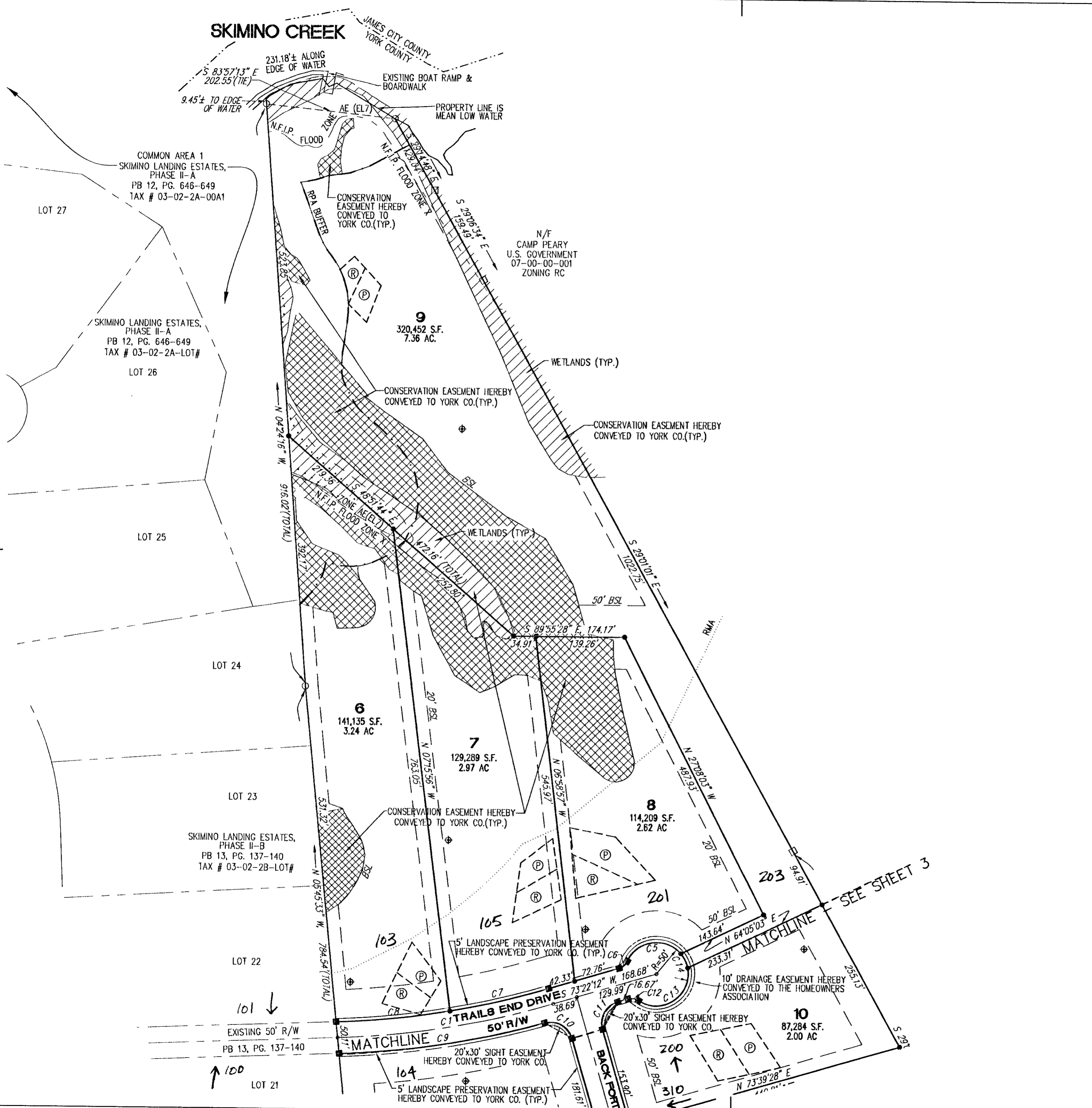
DATE: 10/28/03

STATE OF VIRGINIA
COUNTY OF YORK

IN THE CLERK'S OFFICE OF THE CIRCUIT COURT FOR THE COUNTY OF YORK THE 4th DAY OF Nov, 2003 THIS MAP WAS PRESENTED AND ADMITTED TO RECORD AS THE LAW DIRECTS AS INSTRUMENT NUMBER 030034782 9:27 AM

TESTE: Lyn S Jenkins
CLERK

BY: Amelia Conner D.C.



2003 NOV - 4 AM 9:27