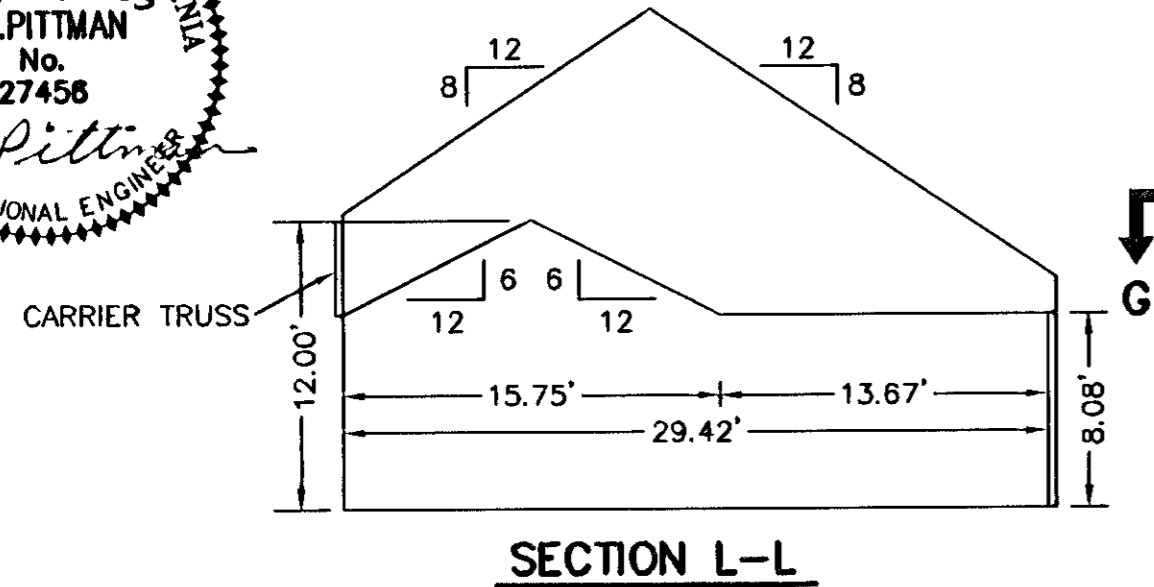
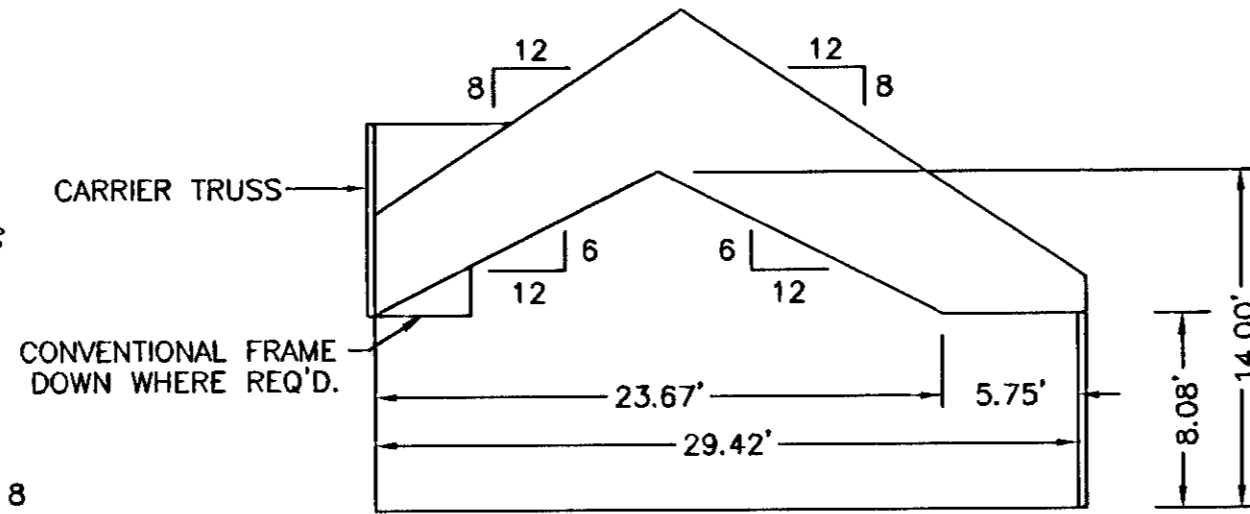
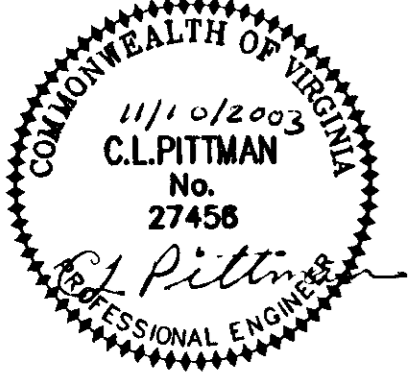
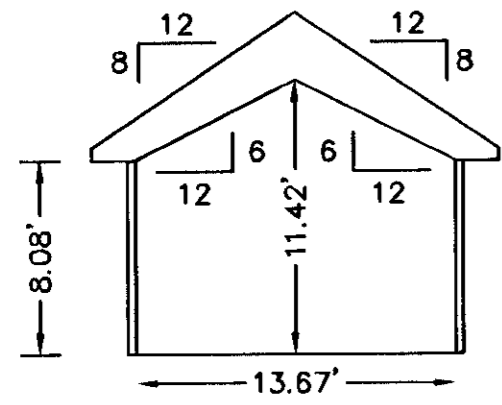


THE UNDERSIGNED CERTIFIES THAT THIS PLAN IS ACCURATE AND COMPLIES WITH THE PROVISIONS OF THE CODE OF VIRGINIA SECTION 55-79.58 (b) AND ALL UNITS DEPICTED HEREON HAVE BEEN SUBSTANTIALLY COMPLETED.

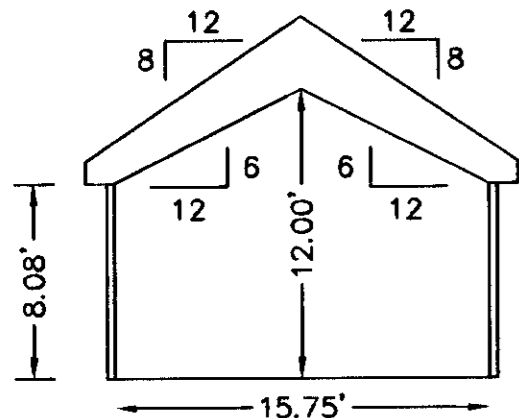
SIGNED: C.L. Pittman DATE: 11/10/2003  
C.L. PITTMAN, P.E.



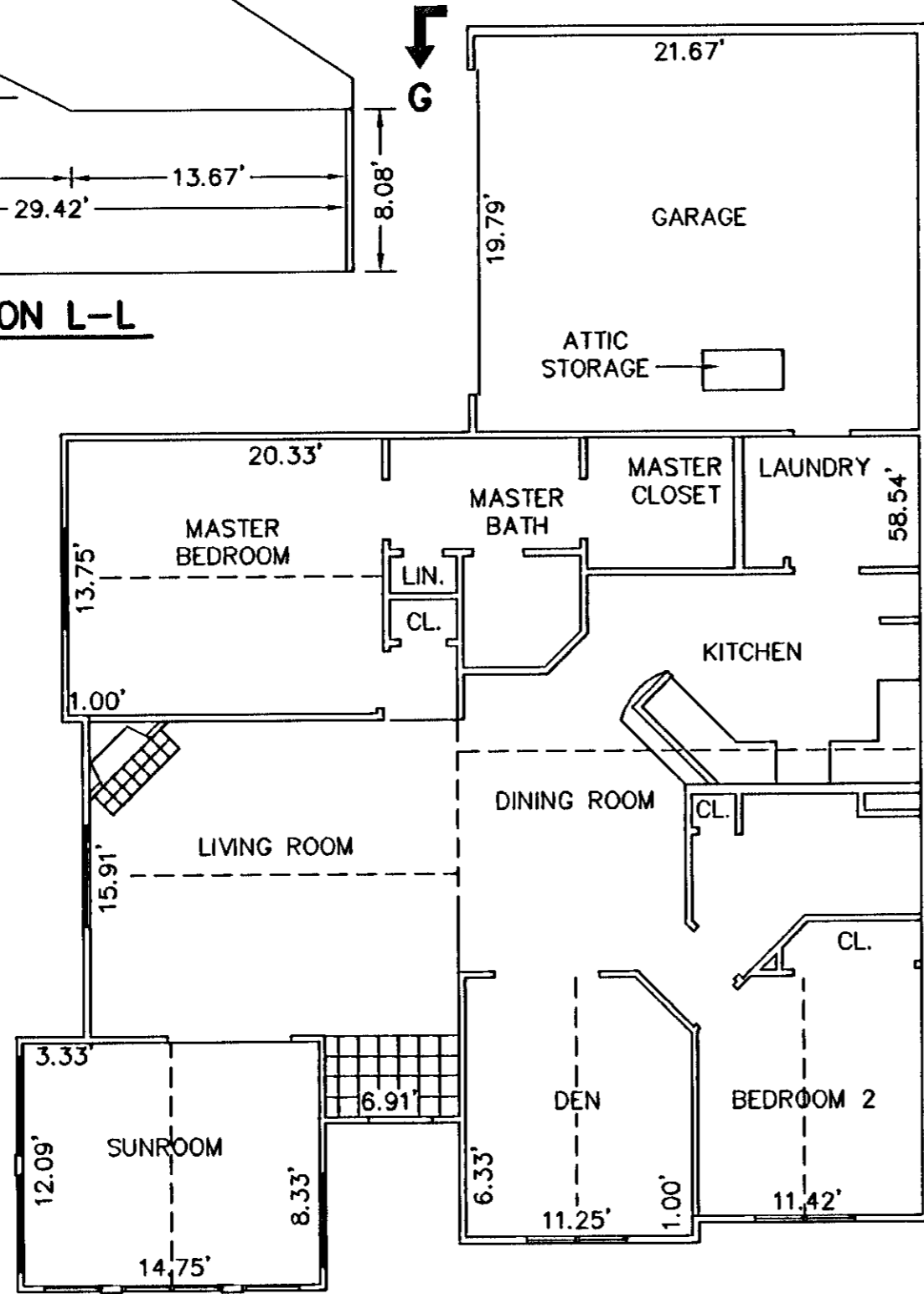
SECTION L-L



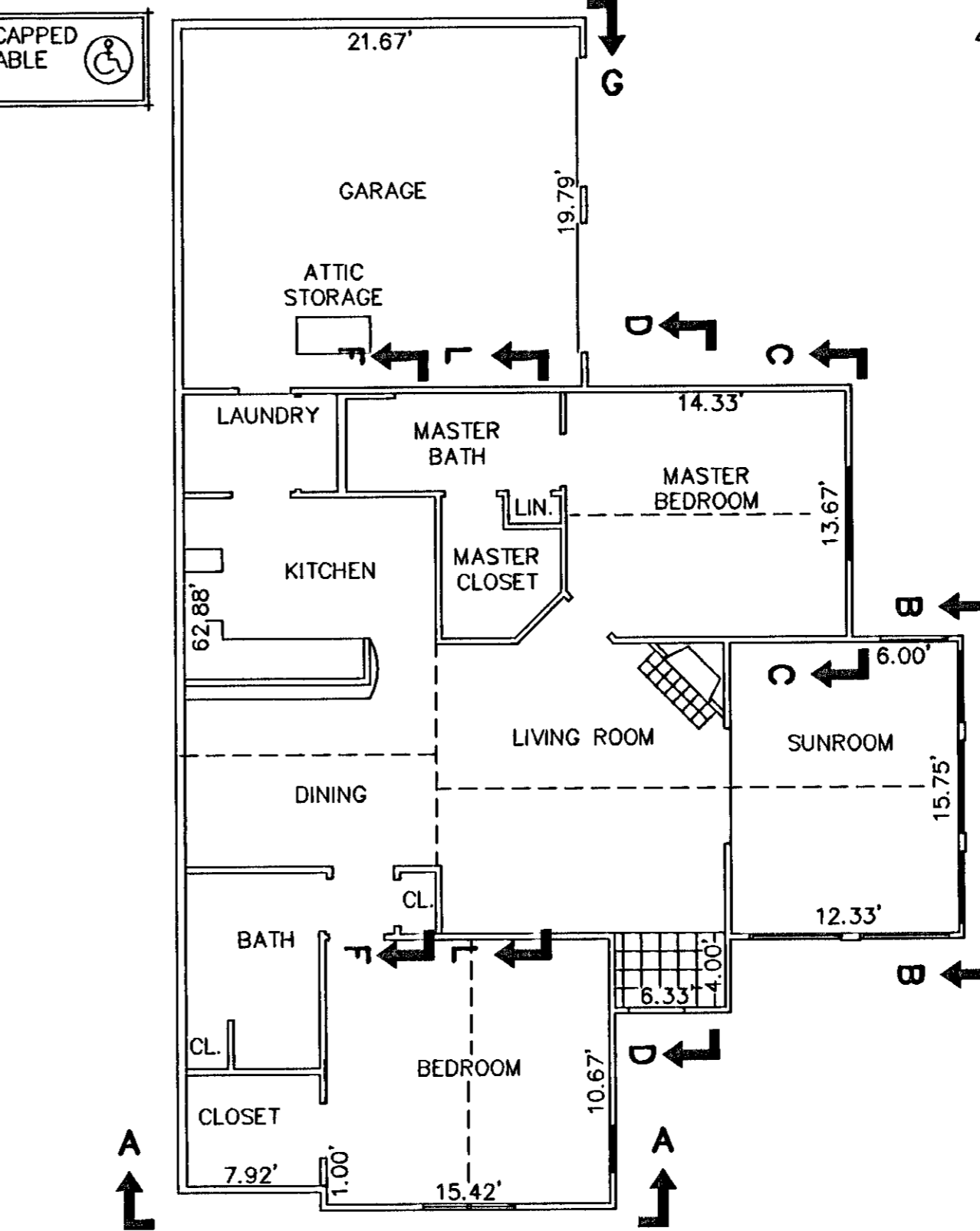
SECTION C-C



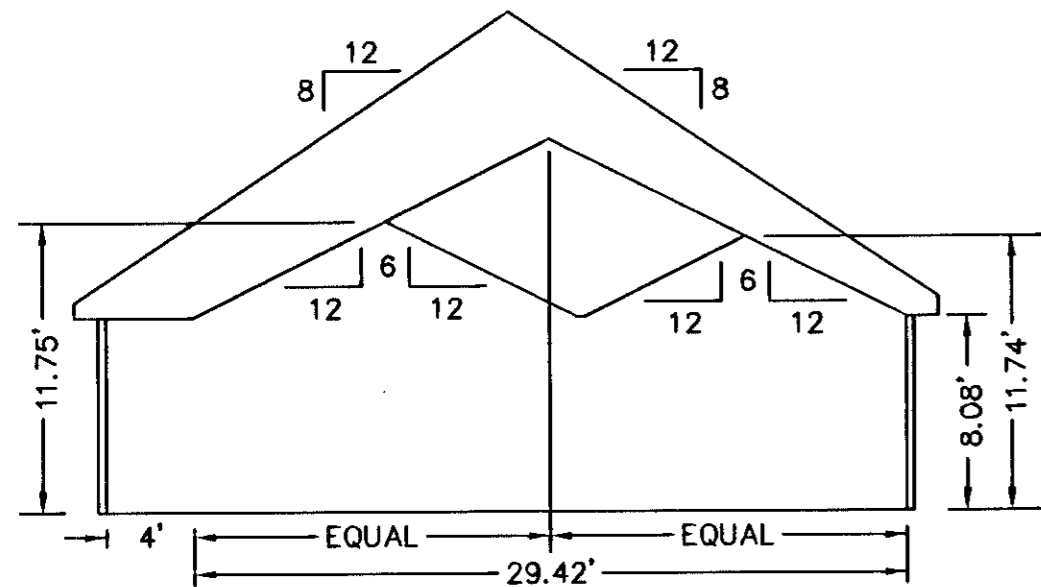
SECTION B-B



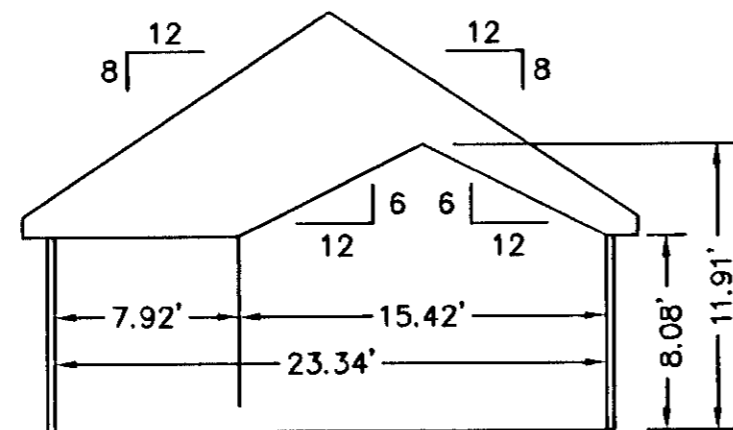
BUILDING 40-4 - CANTERBURY  
FLOOR PLAN



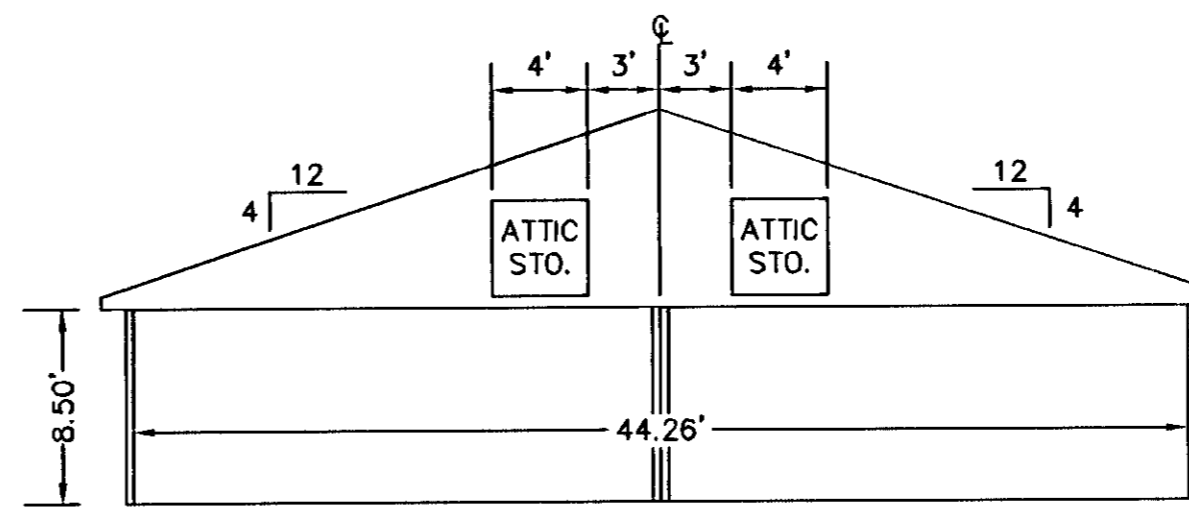
BUILDING 39-2, 39-4, 40-1 & 40-3 - ABBEY  
FLOOR PLAN



SECTION D-D



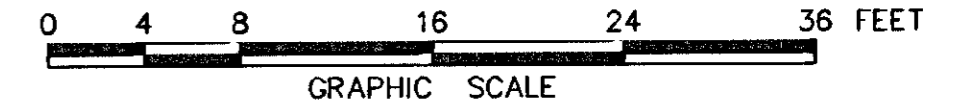
SECTION A-A



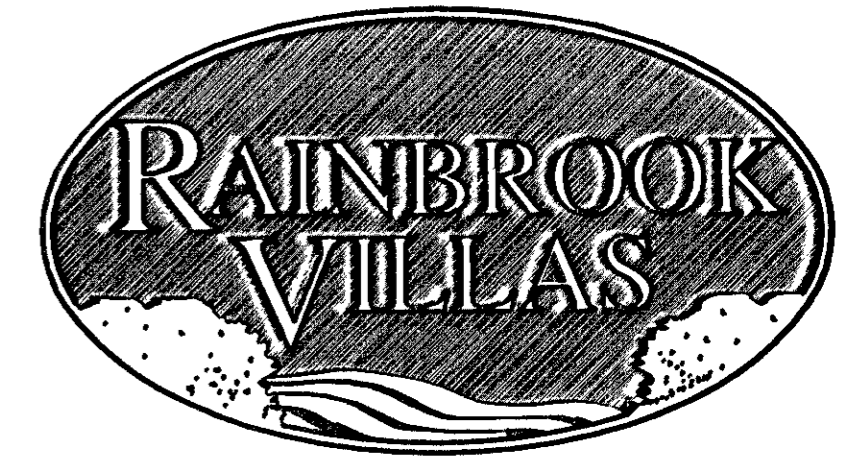
SECTION G-G  
GARAGE

EXHIBIT "D"  
PLAT OF  
RAINBROOK VILLAS  
A CONDOMINIUM  
PHASE XXIII  
SHEET 4 OF 4

GRAFTON DISTRICT - COUNTY OF YORK, VIRGINIA  
SCALE: 1/8" = 1'-0" AUGUST 29, 2003



THE SIRINE GROUP, LTD.  
SURVEYORS • ENGINEERS • PLANNERS  
4794 GEORGE WASHINGTON MEMORIAL HIGHWAY  
U.S. ROUTE 17  
P.O. BOX 450  
WHITE MARSH, VIRGINIA 23183



APPROVED:  
YORK COUNTY BOARD OF SUPERVISORS

BY: Al Maddalena

DATE: 11/13/03

NOTES:  
1. ALL BUILDING DIMENSIONS SHOWN HEREON ARE INTERIOR DIMENSIONS AND ARE IN FEET.

STATE OF VIRGINIA  
COUNTY OF YORK

IN THE CLERK'S OFFICE OF THE CIRCUIT COURT FOR THE COUNTY OF YORK THE 13<sup>th</sup> DAY OF November, 2003, THIS PLAT WAS PRESENTED AND ADMITTED TO RECORD AS THE LAW DIRECTS AS INSTRUMENT NUMBER 030035889

11:51 am

TESTE: Lynn S Jenkins  
CLERK

BY: Julio Canon P.C.