

PLAT OF SUBDIVISION
THE GREENLANDS
 PHASE FIVE
 BETHEL MAGISTERIAL DISTRICT
 COUNTY OF YORK, VIRGINIA

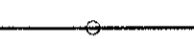
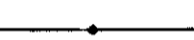


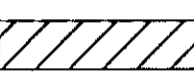
DATE: 3/18/03 SHEET 3 OF 3 SCALE: 1"=50'
 PROJECT NO: 30858.00 DRAWN BY: DWP

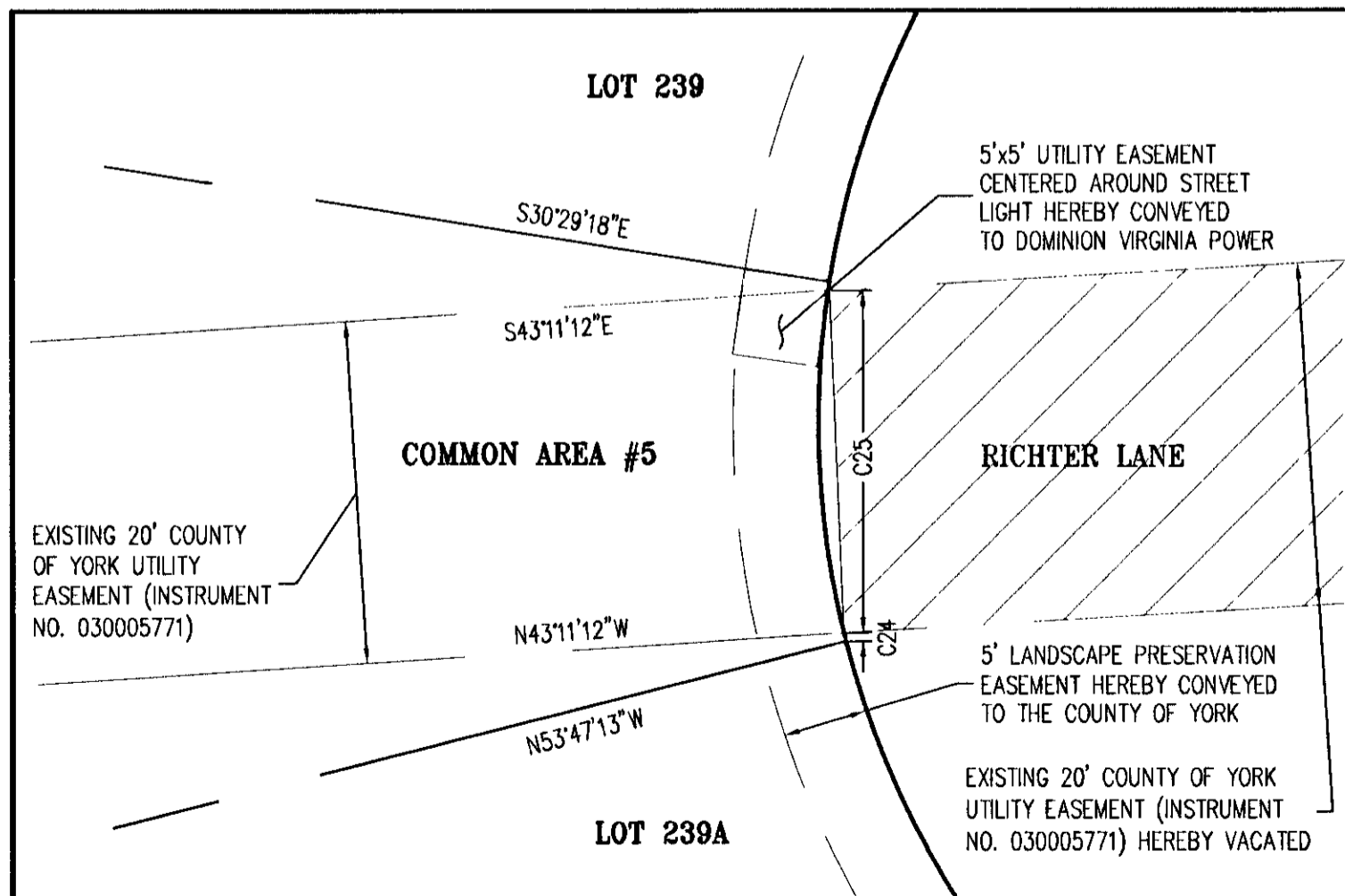
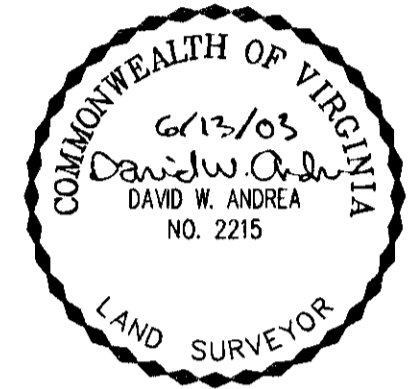
VHIB Vanasse Hangen Brustlin, Inc.
 Transportation Land Development Environmental Services
 11832 Rock Landing Drive, Suite 203
 Newport News, Virginia 23606-4231
 (757) 873-3386 • FAX (757) 873-0757

CURVE DATA TABLE						
NUMBER	RADIUS	DELTA	ARC LENGTH	TANGENT	CHORD	CHORD BEARING
C1	275.00'	47°13'40"	226.68'	120.22'	220.31'	N14°18'15"W
C2	275.00'	15°06'51"	72.54'	36.48'	72.33'	N01°45'09"E
C3	275.00'	18°07'40"	87.01'	43.87'	86.65'	N14°52'06"W
C4	275.00'	13°59'09"	67.13'	33.73'	66.96'	N30°55'31"W
C5	25.00'	53°54'29"	23.52'	12.71'	22.66'	N64°52'19"W
C6	52.00'	278°47'59"	253.03'	44.57'	67.68'	S47°34'22"W
C7	52.00'	82°07'22"	74.53'	45.30'	68.31'	S50°45'53"E
C8	52.00'	45°54'58"	41.67'	22.03'	40.57'	S13°15'17"W
C9	52.00'	23°17'56"	21.15'	10.72'	21.00'	S47°51'45"W
C10	52.00'	48°26'44"	43.97'	23.39'	42.67'	S83°44'04"W
C11	52.00'	60°43'50"	55.12'	30.47'	52.57'	N41°40'39"W
C12	52.00'	18°17'02"	16.59'	8.37'	16.52'	N02°10'13"W
C13	25.00'	46°10'47"	20.15'	10.66'	19.61'	S16°07'05"E
C14	325.00'	48°31'04"	275.21'	146.46'	267.06'	N14°56'57"W
C15	325.00'	6°42'06"	38.01'	19.03'	37.99'	N35°51'26"W
C16	325.00'	11°18'58"	64.19'	32.20'	64.08'	N26°50'54"W
C17	325.00'	11°18'58"	64.19'	32.20'	64.08'	N15°31'56"W
C18	325.00'	11°18'58"	64.19'	32.20'	64.08'	N04°12'58"W
C19	325.00'	7°52'04"	44.63'	22.35'	44.59'	N05°22'33"E
C20	300.00'	52°47'26"	276.41'	148.89'	266.74'	N17°05'08"W
C21	275.00'	0°32'05"	2.57'	1.28'	2.57'	N06°04'19"W
C22	275.00'	2°05'01"	10.00'	5.00'	10.00'	N07°22'52"W
C23	270.00'	2°07'20"	10.00'	5.00'	10.00'	N07°22'52"W
C24	52.00'	0°33'29"	0.51'	0.25'	0.51'	S36°29'31"W
C25	52.00'	22°10'43"	20.13'	10.19'	20.00'	S47°51'37"W

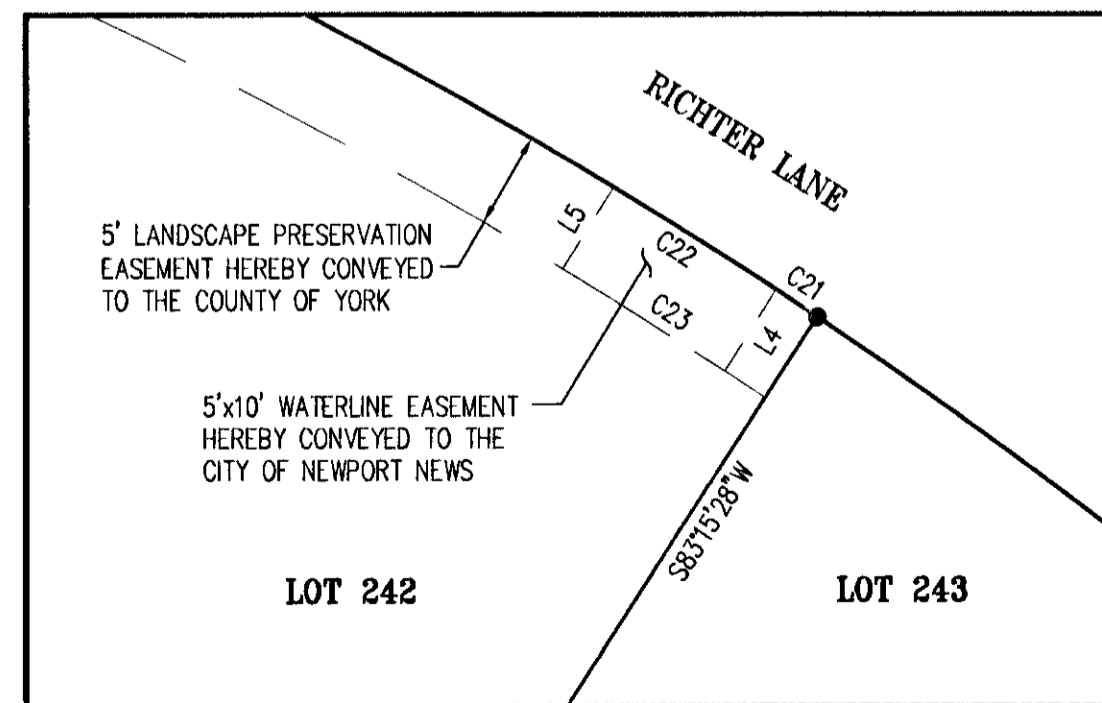
LINE TABLE		
LINE	BEARING	LENGTH
L1	N09°18'35"E	4.68'
L2	N31°24'16"W	25.21'
L3	N31°24'16"W	62.92'
L4	N82°37'08"E	5.00'
L5	N82°37'08"E	5.00'

LEGEND

-  INDICATES IRON ROD FOUND
-  INDICATES IRON ROD TO BE SET
-  INDICATES V.D.H. CONC. MON. FOUND
-  INDICATES CONC. MON. TO BE SET
-  PORTION OF EXISTING YORK COUNTY 20' UTILITY EASEMENT (INSTRUMENT NO. 030005771) HEREBY VACATED



DETAIL 1
 SCALE: 1"=10'



DETAIL 2
 SCALE: 1"=10'

APPROVED:
 YORK COUNTY BOARD OF SUPERVISORS

BY: Al Maddalena
 PLAT APPROVING AGENT
 DATE: 11/17/03

STATE OF VIRGINIA
COUNTY OF YORK

IN THE CLERK'S OFFICE OF THE CIRCUIT COURT FOR THE COUNTY OF YORK, THE 23rd DAY OF Dec, 2003. THIS MAP WAS PRESENTED AND ADMITTED TO RECORD AS THE LAW DIRECTS AS INSTRUMENT NO. 030039877.
 9:06 am
 TESTE: Lynn S Jenkins
 CLERK

BY: Amelia Conner D.C.