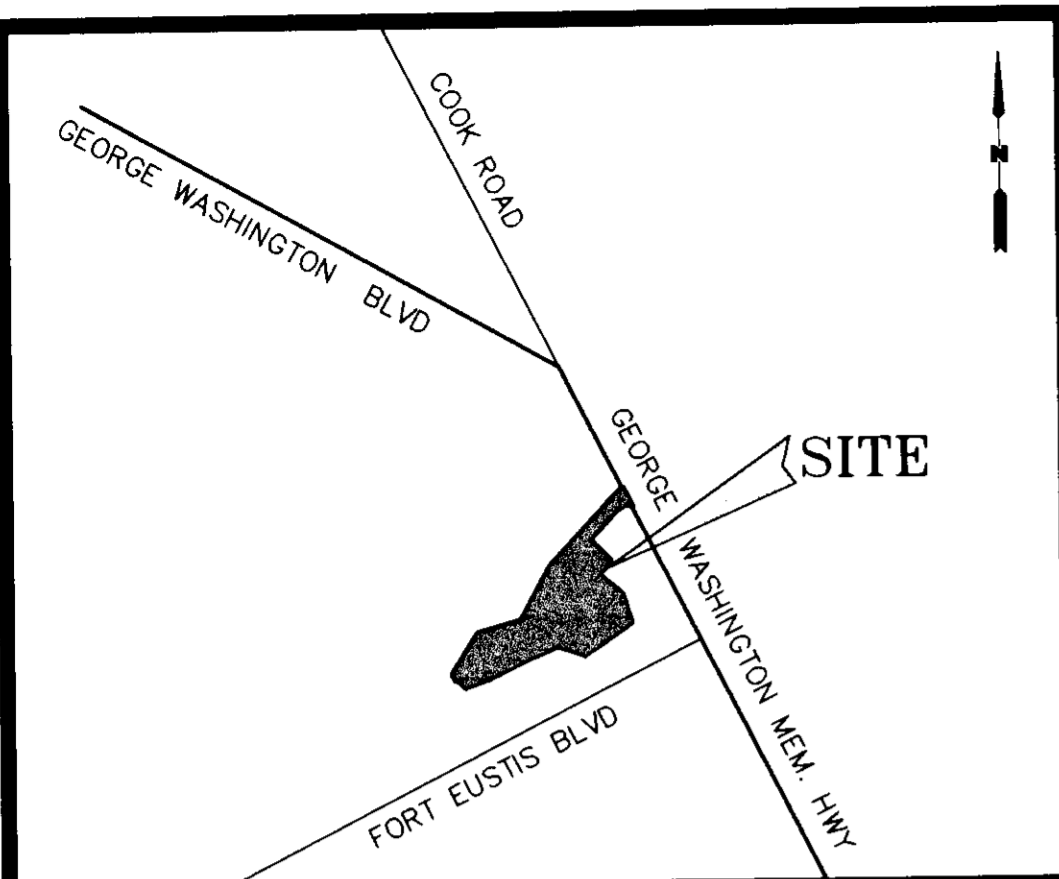


PLAT SHOWING
CONSERVATION EASEMENTS
LOCATED WITHIN
**KING PROPERTY
APARTMENTS**
NELSON MAGISTERIAL DISTRICT
COUNTY OF YORK, VIRGINIA

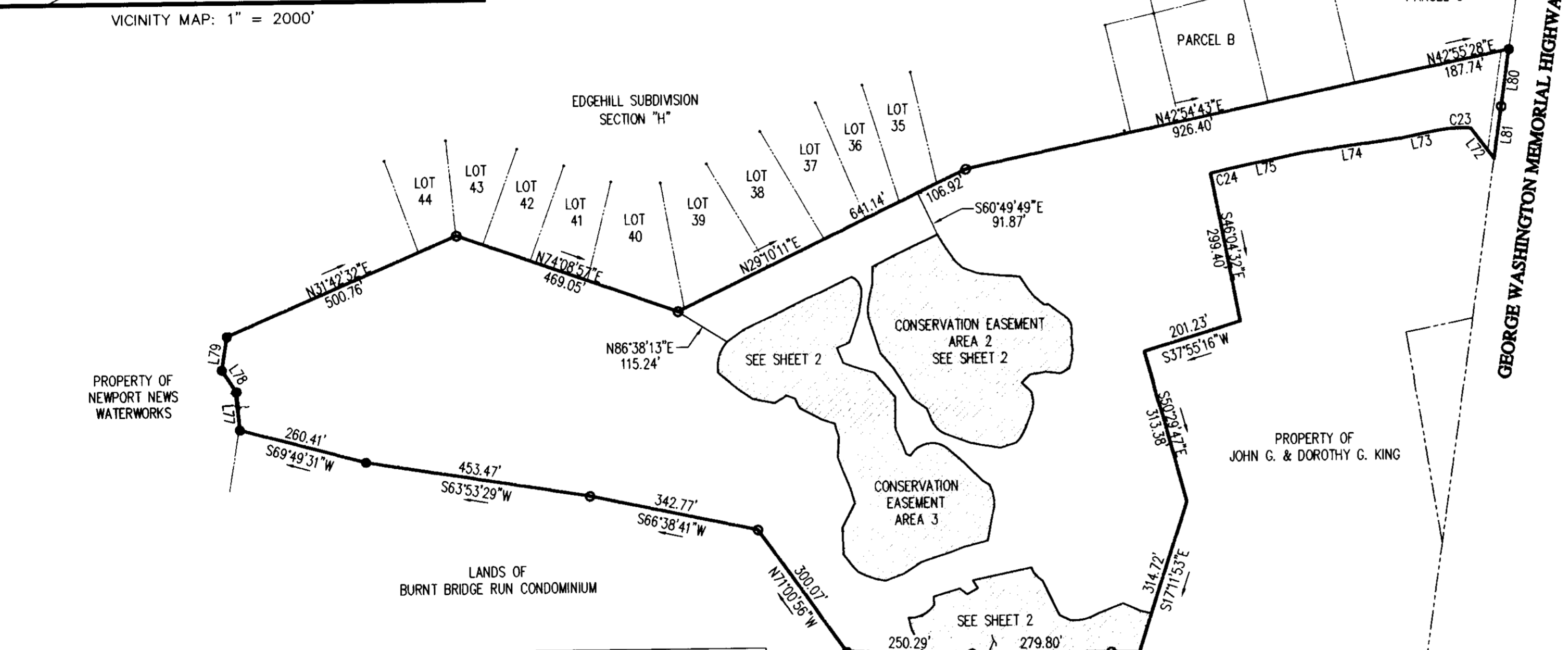
DATE: 9/11/01 SHEET 1 OF 2 SCALE: 1" = 200'

PROJECT NO: 30969.00 DRAWN BY: DWP

VHB *Vanasse Hangen Brustlin, Inc.*
Transportation Land Development Environmental Services
11832 Rock Landing Drive, Suite 203
Newport News, Virginia 23606-4231
(757) 873-3386 • FAX (757) 873-0737

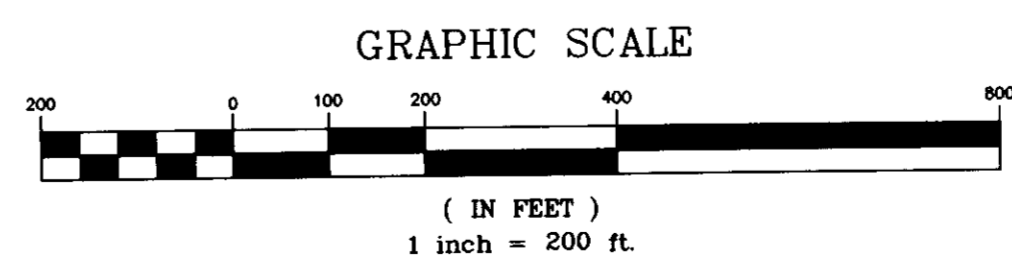


LINE TABLE		
LINE	BEARING	LENGTH
L72	N72°01'25"W	76.39'
L73	S42°54'43"W	65.24'
L74	S46°54'58"W	200.49'
L75	S42°54'43"W	155.74'
L76	S56°08'30"W	56.71'
L77	N39°28'25"W	78.14'
L78	N68°12'16"W	53.26'
L79	N26°20'50"W	67.58'
L80	S27°00'40"E	114.56'
L81	S27°01'25"E	105.61'



CURVE DATA TABLE						
NUMBER	RADIUS	DELTA	ARC LENGTH	TANGENT	CHORD	CHORD BEARING
C1	58.47'	58°45'29"	59.97'	32.92'	57.37'	N29°41'44"E
C2	50.94'	40°26'30"	35.95'	18.76'	35.21'	S74°37'10"E
C3	99.19'	32°57'56"	57.07'	29.35'	56.29'	N41°27'17"E
C4	519.09'	2°55'04"	26.43'	13.22'	26.43'	N78°43'08"E
C5	189.02'	8°10'08"	26.95'	13.50'	26.93'	S66°16'20"E
C6	258.86'	11°55'47"	53.90'	27.05'	53.80'	S70°54'52"E
C7	28.99'	60°26'28"	30.58'	16.88'	29.18'	S64°21'55"E
C8	91.39'	34°14'49"	54.63'	28.16'	53.82'	S28°46'31"E
C9	231.09'	7°21'25"	29.67'	14.86'	29.65'	S61°11'15"W
C10	70.62'	40°28'31"	49.89'	26.03'	48.85'	S34°37'06"E
C11	87.71'	26°34'52"	40.69'	20.72'	40.33'	S01°09'50"E
C12	50.00'	51°51'41"	45.26'	24.31'	43.73'	N79°04'59"W
C13	77.32'	24°13'55"	32.70'	16.60'	32.46'	N33°45'32"W
C14	3697.88'	0°44'40"	48.05'	24.02'	48.04'	N26°46'38"E
C15	770.58'	4°07'04"	55.38'	27.70'	55.37'	N28°55'40"E
C16	34.47'	71°51'52"	43.24'	24.98'	40.46'	S64°46'57"E
C17	50.00'	101°34'15"	88.64'	61.27'	77.48'	N45°13'48"E
C18	72.82'	49°28'24"	62.88'	33.55'	60.94'	S40°24'31"E
C19	134.05'	25°34'23"	59.83'	30.42'	59.33'	S72°52'11"W
C20	448.13'	4°21'05"	34.03'	17.03'	34.03'	N72°57'46"W
C21	345.62'	9°42'44"	58.59'	29.36'	58.51'	N89°25'48"W
C22	70.34'	54°34'17"	67.00'	36.28'	64.49'	N18°28'27"W
C23	284.50'	15°17'37"	75.94'	38.20'	75.72'	S50°33'31"W
C24	473.07'	3°58'54"	32.87'	16.44'	32.87'	S40°55'16"W

- PIN FOUND
- PIN SET



APPROVED:
YORK COUNTY BOARD OF SUPERVISORS

BY: _____
PLAT APPROVING AGENT

DATE: _____

**STATE OF VIRGINIA
COUNTY OF YORK**

IN THE CLERK'S OFFICE OF THE CIRCUIT COURT FOR THE COUNTY OF YORK, THE ____ DAY OF _____, 2001. THIS MAP WAS PRESENTED AND ADMITTED TO RECORD AS THE LAW DIRECTS IN PLAT BOOK _____, PAGE _____.

TESTE: _____
CLERK

BY: _____