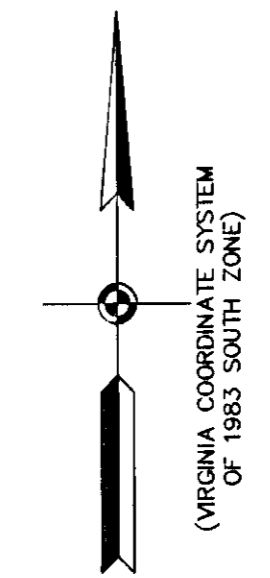


VICINITY MAP SCALE: 1" = 2000'

NOTE: PROPERTY LIES IN ZONE X, WHITE, (AREAS DETERMINED TO BE OUTSIDE 500-YEAR FLOOD PLAIN), AS SHOWN ON FLOOD INSURANCE RATE MAP FOR YORK COUNTY, VIRGINIA, COMM. NO. 510182 0036B, 12/16/88 AND COMM. NO. 510182 0037B, 12/16/88.

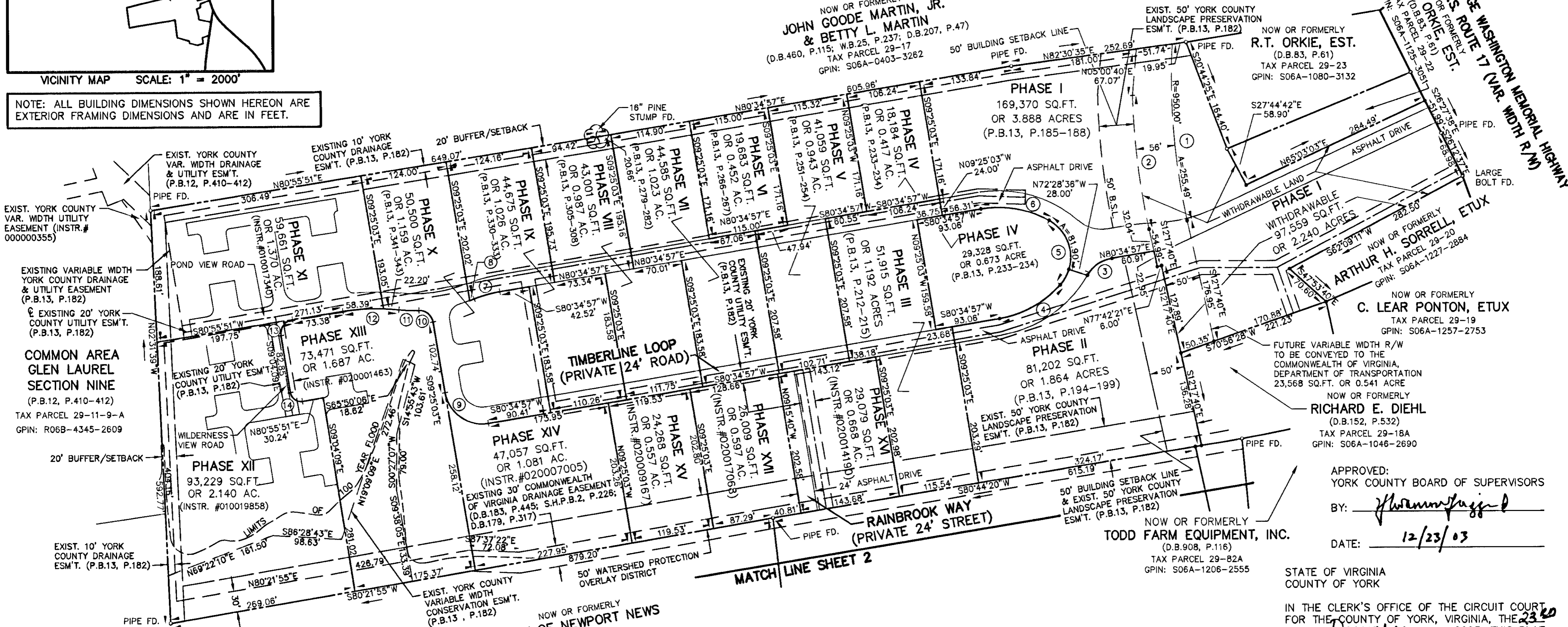
NO.	RADIUS	DELTA	ARC	TANGENT	CHORD	CHORD BRG.
1	950.00'	15°24'33"	255.49'	128.52'	254.72'	S04°35'23"E
2	1006.00'	11°02'41"	193.92'	97.26'	193.62'	N06°46'19"W
3	50.00'	50°45'18"	44.29'	23.72'	42.86'	N55°12'18"E
4	150.00'	38°43'45"	101.39'	52.72'	99.47'	N61°13'04"E
5	60.00'	102°32'30"	107.38'	74.81'	93.61'	N09°25'03"W
6	150.00'	38°43'45"	101.39'	52.72'	99.47'	N80°03'10"W
7	176.00'	12°28'12"	38.31'	19.23'	38.23'	N74°20'51"E
8	224.00'	01°45'06"	6.85'	3.42'	6.85'	N68°59'18"E
9	54.00'	90°00'00"	84.82'	54.00'	76.37'	N54°25'03"W
10	20.00'	81°37'46"	28.49'	17.27'	26.14'	N50°13'56"W
11	224.00'	07°22'12"	28.81'	14.43'	28.79'	N87°21'43"W
12	300.00'	15°23'32"	80.59'	40.54'	80.35'	S88°37'37"W
13	20.00'	90°00'00"	31.42'	20.00'	28.28'	S35°55'51"W
14	15.00'	90°00'00"	23.56'	15.00'	21.21'	S54°04'09"E
15	78.00'	46°31'09"	61.71'	32.67'	60.02'	S29°45'02"E
16	76.00'	16°42'46"	22.17'	11.16'	22.09'	S61°21'59"E
17	324.00'	07°22'59"	41.75'	20.90'	41.72'	S66°01'53"E
18	100.00'	66°34'40"	116.20'	65.66'	109.77'	N39°46'52"W
19	86.00'	47°06'09"	70.70'	48.06'	68.72'	N45°56'52"E
20	10.00'	90°00'00"	15.71'	10.00'	14.14'	N54°15'39"W
21	10.00'	90°00'00"	15.71'	10.00'	14.14'	N54°15'39"W



**EXHIBIT "C"**  
**PLAT OF**  
**RAINBROOK VILLAS (INSTR.#02000598B)**  
**A CONDOMINIUM**  
**PHASE XXV**  
**SHEET 1 OF 4**  
**GRAFTON DISTRICT - COUNTY OF YORK, VIRGINIA**  
**SCALE: 1" = 100'**    **DECEMBER 4, 2003**

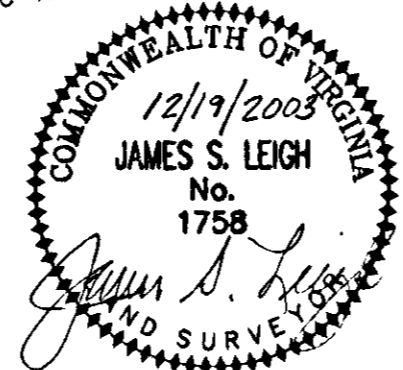
0 50 100 200 300 400 FEET  
 GRAPHIC SCALE  
**THE SIRINE GROUP, LTD.**  
 SURVEYORS • ENGINEERS • PLANNERS  
 4794 GEORGE WASHINGTON MEMORIAL HIGHWAY  
 U.S. ROUTE 17  
 P.O. BOX 450  
 WHITE MARSH, VIRGINIA 23183

NOTE: ALL BUILDING DIMENSIONS SHOWN HEREON ARE EXTERIOR FRAMING DIMENSIONS AND ARE IN FEET.



UTILITY NOTES:  
 WATER: EACH UNIT WITHIN THIS CONDOMINIUM IS SERVED BY PUBLIC WATER PROVIDED BY THE CITY OF NEWPORT NEWS.  
 SEWER: EACH UNIT WITHIN THIS CONDOMINIUM IS SERVED BY PUBLIC SEWER PROVIDED BY THE COUNTY OF YORK AND H.R.S.D.

THIS PROPERTY IS SUBJECT TO COVENANTS, CONDITIONS, RESTRICTIONS, EASEMENTS, LIENS FOR ASSESSMENTS, OPTIONS, POWER OF ATTORNEYS, AND LIMITATIONS ON TITLE, CREATED BY THE VIRGINIA CONDOMINIUM STATUTE.



APPROVED:  
 YORK COUNTY BOARD OF SUPERVISORS  
 BY: *[Signature]*  
 DATE: 12/23/03

STATE OF VIRGINIA  
 COUNTY OF YORK  
 IN THE CLERK'S OFFICE OF THE CIRCUIT COURT FOR THE COUNTY OF YORK, VIRGINIA, THE DAY OF December, 2003, THIS PLAT WAS PRESENTED AND ADMITTED TO RECORD AS THE LAW DIRECTS AS INSTRUMENT NUMBER:  
030039913  
 TESTE: Lynn S. Jenkins CLERK  
 BY: Lisa Bryden DEPUTY CLERK  
 PROPERTY IS ASSESSOR'S PARCEL 29-00-00-018B  
 GPIN: S06C-0943-2132