

EXHIBIT "C"

PLAT OF
VILLAS ON SHADY BANKS
A CONDOMINIUM
PHASE VII

(PROP. REF.: D.B. 54, P.107; D.B. 968, PGS.532-550)
(INSTR. #050004943; INSTR. #030021817)
SHEET 2 OF 4

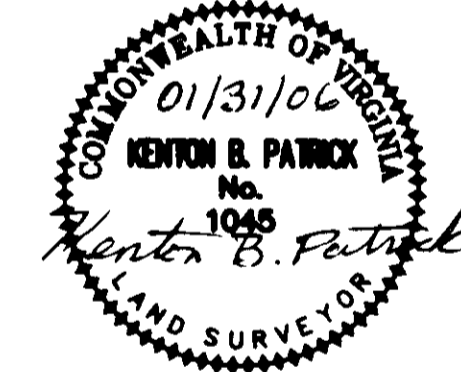
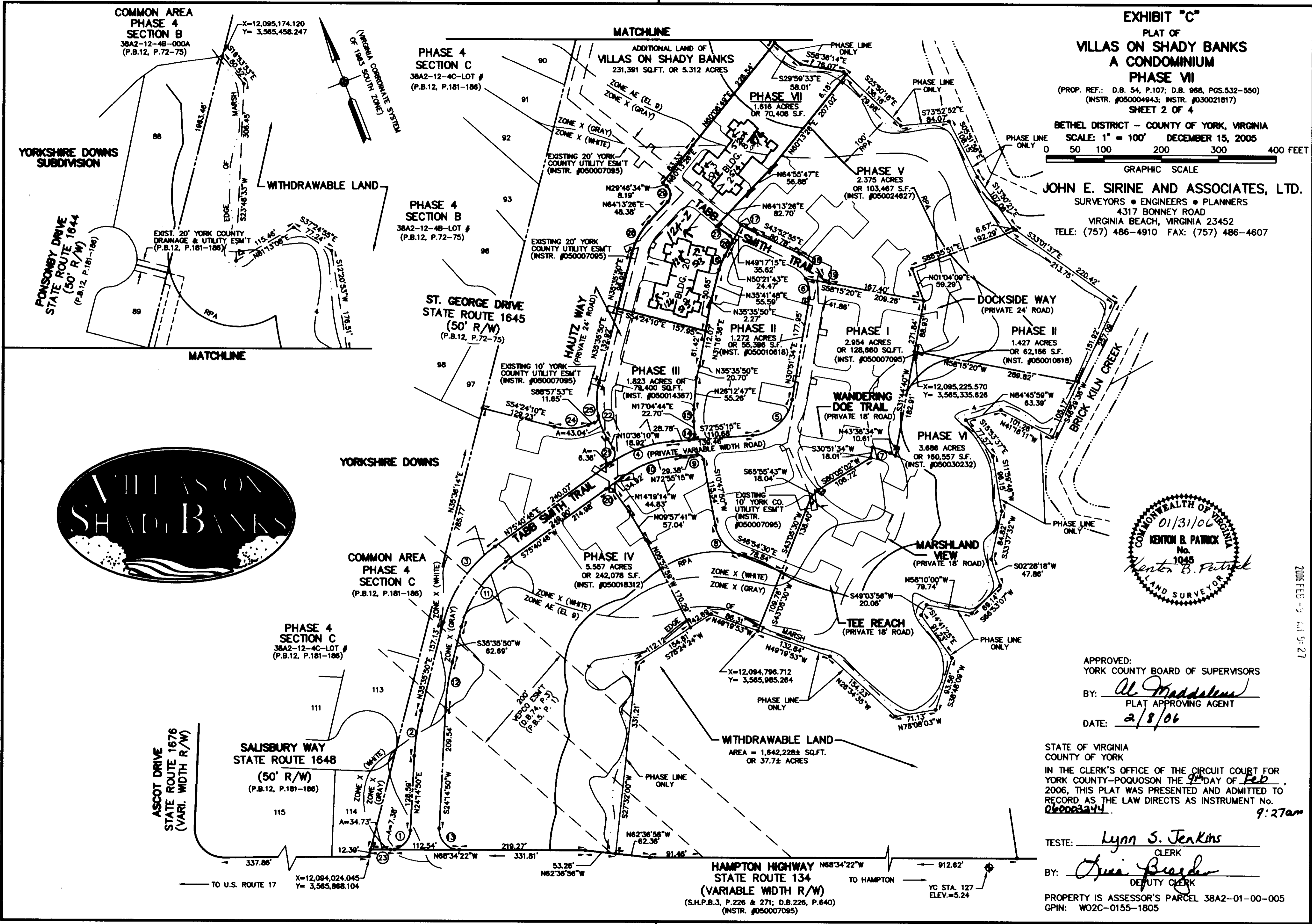
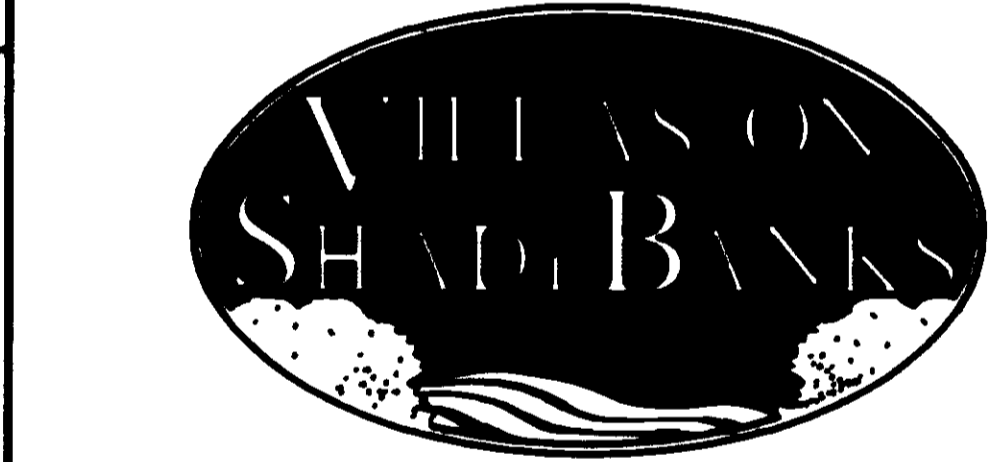
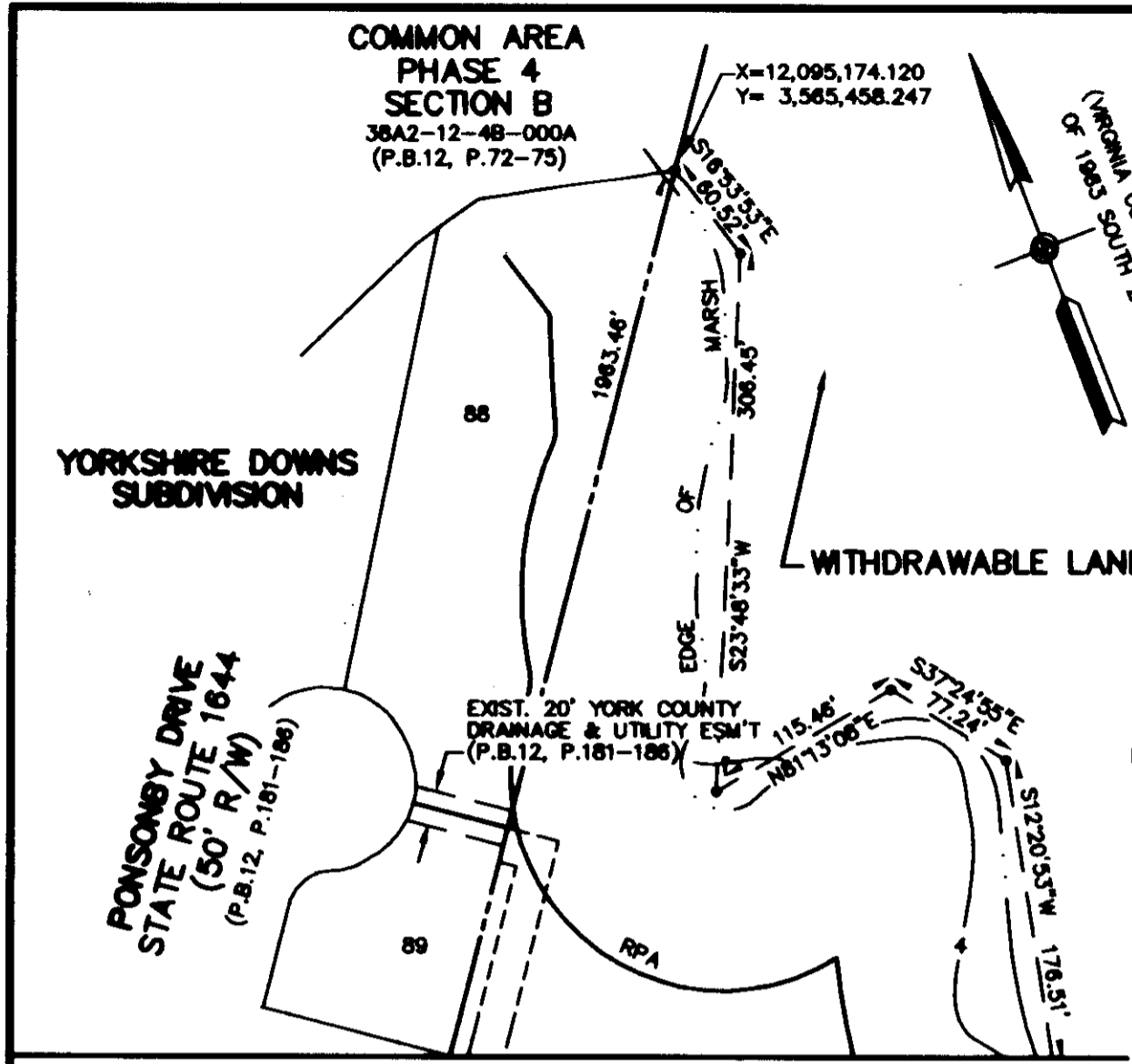
BETHEL DISTRICT - COUNTY OF YORK, VIRGINIA
SCALE: 1" = 100' DECEMBER 15, 2005

0 50 100 200 300 400 FEET

GRAPHIC SCALE

JOHN E. SIRINE AND ASSOCIATES, LTD.

SURVEYORS • ENGINEERS • PLANNERS
4317 BONNEY ROAD
VIRGINIA BEACH, VIRGINIA 23452
TELE: (757) 486-4910 FAX: (757) 486-4607



APPROVED:
YORK COUNTY BOARD OF SUPERVISORS
BY: *Al. Maddalena*
PLAT APPROVING AGENT
DATE: 2/8/06

STATE OF VIRGINIA
COUNTY OF YORK
IN THE CLERK'S OFFICE OF THE CIRCUIT COURT FOR
YORK COUNTY-POQUOSON THE 9th DAY OF Feb,
2006, THIS PLAT WAS PRESENTED AND ADMITTED TO
RECORD AS THE LAW DIRECTS AS INSTRUMENT NO.
060003244 9:27am

TESTE: *Lynn S. Jenkins*
CLERK
BY: *Anna Brasher*
DEPUTY CLERK

PROPERTY IS ASSESSOR'S PARCEL 38A2-01-00-005
GPIN: W02C-0155-1805