

THE UNDERSIGNED CERTIFIES THAT THIS PLAN IS ACCURATE AND COMPLIES WITH THE PROVISIONS OF THE CODE OF VIRGINIA SECTION 55-79.58 (b) AND ALL UNITS DEPICTED HEREON HAVE BEEN SUBSTANTIALLY COMPLETED.

SIGNED: *Kenton B. Patrick* DATE: *01/31/06*
KENTON B. PATRICK, P.E.

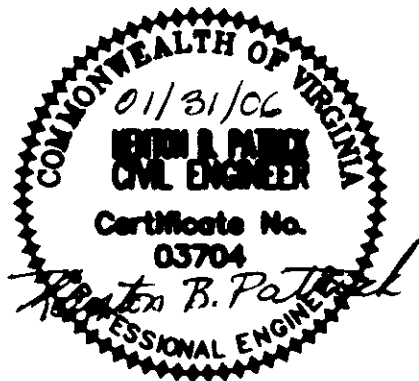
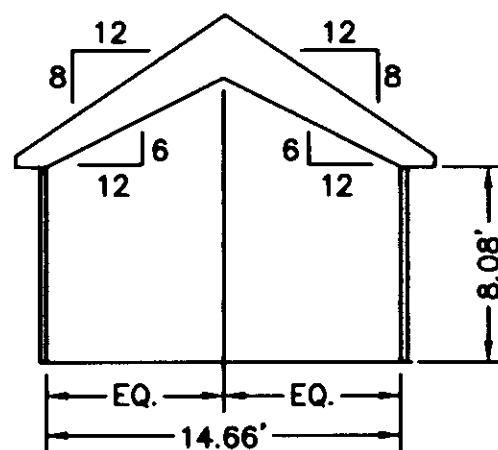


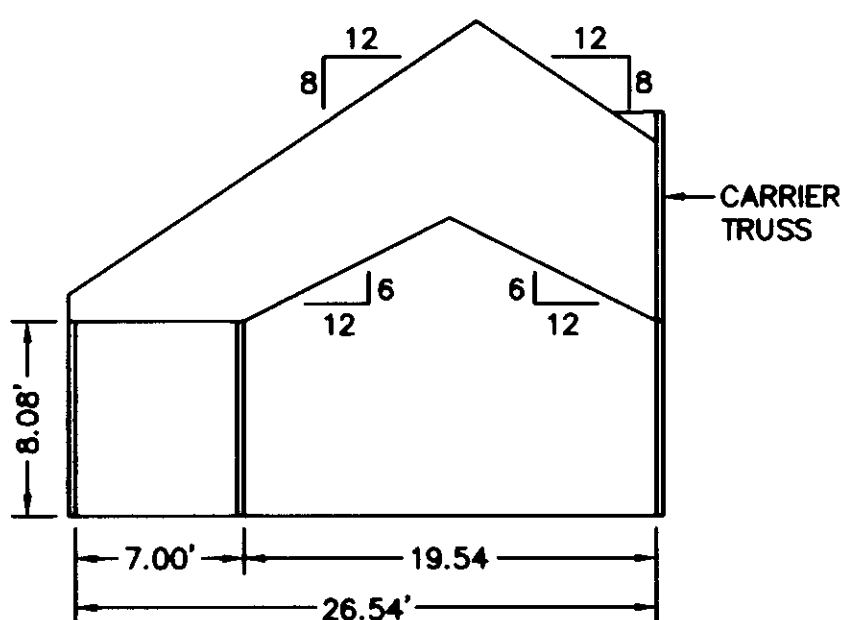
EXHIBIT "D"
PLAT OF
VILLAS ON SHADY BANKS
A CONDOMINIUM
PHASE VII
SHEET 3 OF 4

BETHEL DISTRICT - COUNTY OF YORK, VIRGINIA
SCALE: 1/8" = 1'-0" DECEMBER 15, 2005
0 4 8 16 24 32 FEET
GRAPHIC SCALE

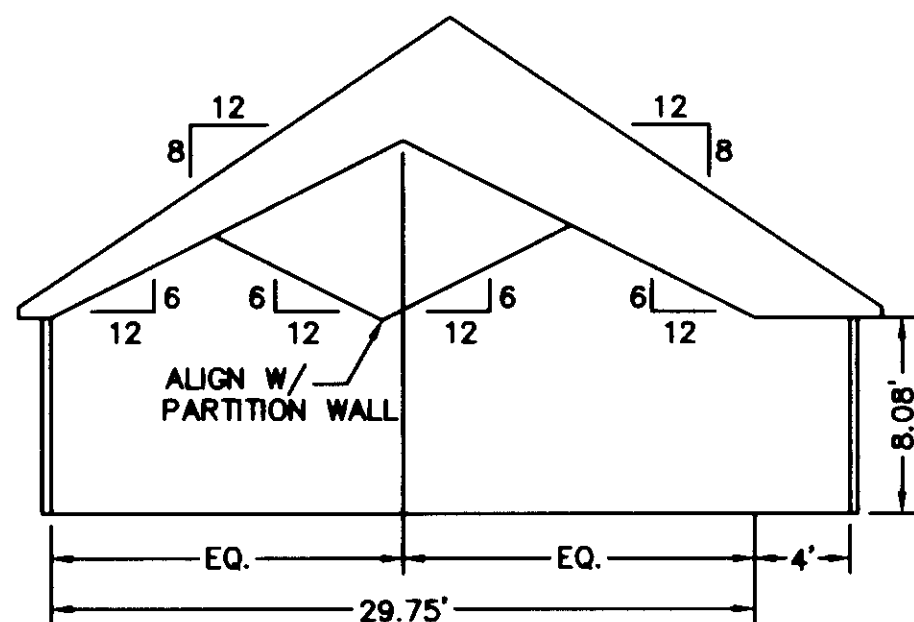
JOHN E. SIRINE AND ASSOCIATES, LTD.
SURVEYORS • ENGINEERS • PLANNERS
4317 BONNEY ROAD
VIRGINIA BEACH, VIRGINIA 23452
TELE: (757) 486-4910 FAX: (757) 486-4607



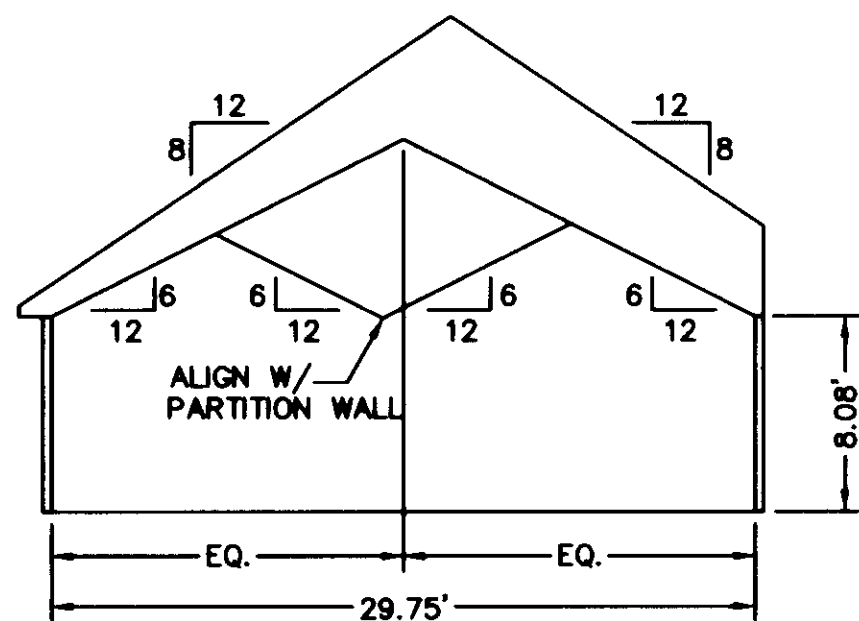
SECTION D-D



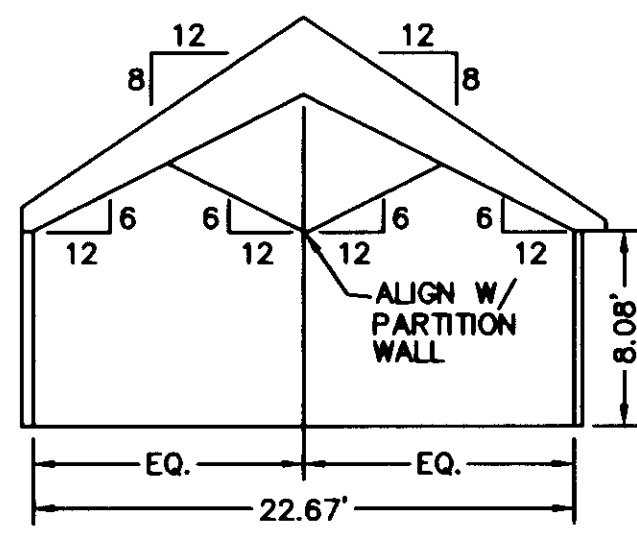
SECTION A-A



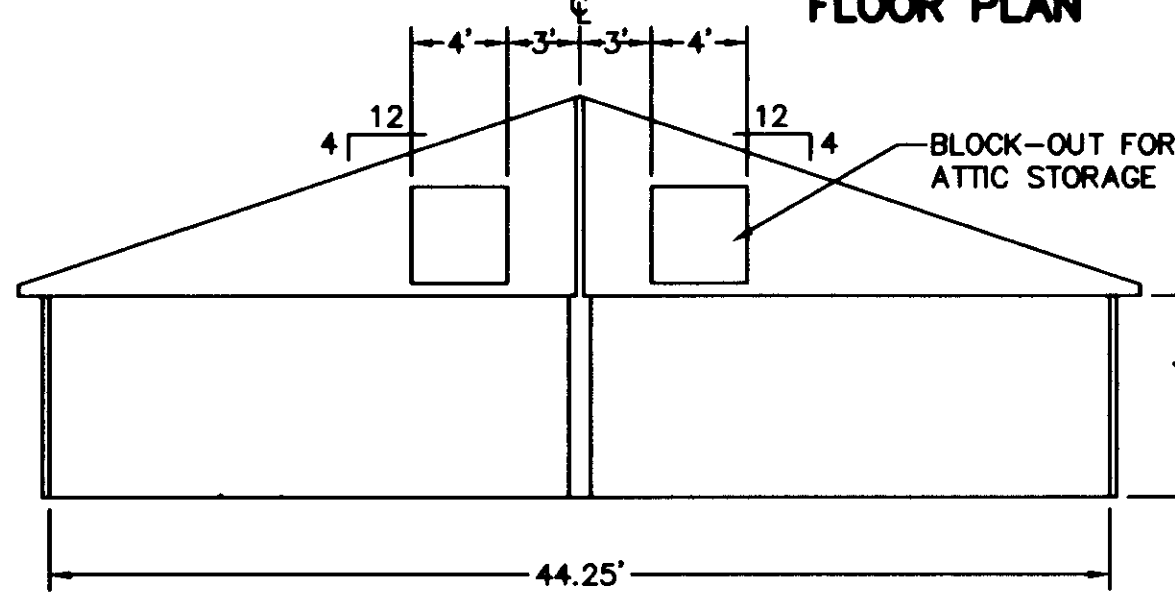
SECTION B-B



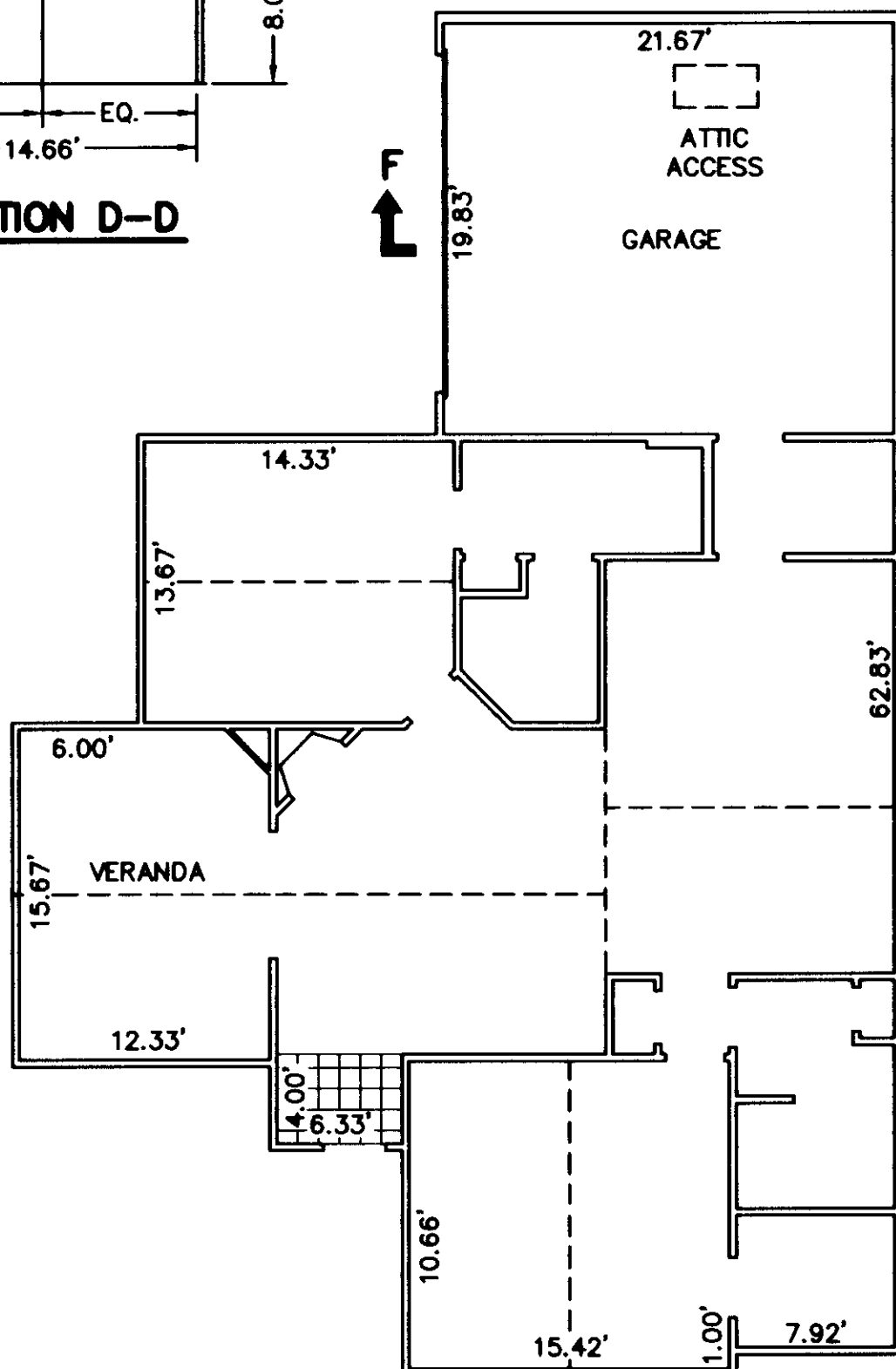
SECTION C-C



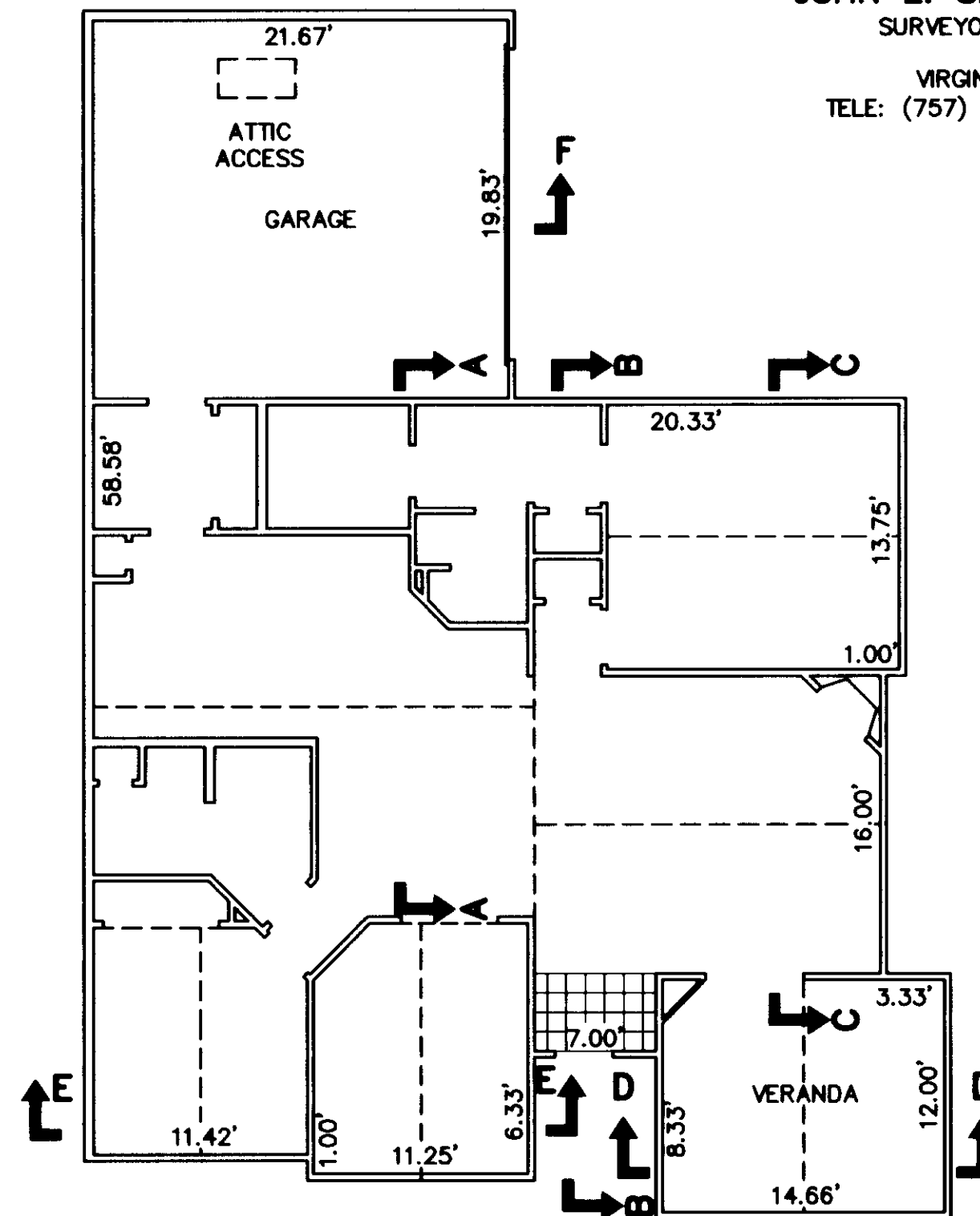
SECTION E-E



SECTION F-F



BUILDING 8-2, 8-4,
20-2 & 20-4 ABBEY
FLOOR PLAN



BUILDING 8-1, 8-3,
20-1 & 20-3 CANTERBURY
FLOOR PLAN



APPROVED:
YORK COUNTY BOARD OF SUPERVISORS

BY: *Al. Maddalena*
PLAT APPROVING AGENT

DATE: *2/8/06*

NOTES:
1. ALL BUILDING DIMENSIONS SHOWN HEREON ARE INTERIOR DIMENSIONS AND ARE IN FEET.

STATE OF VIRGINIA
COUNTY OF YORK

IN THE CLERK'S OFFICE OF THE CIRCUIT COURT FOR YORK COUNTY-
POQUOSON, VIRGINIA, THIS *9th* DAY OF *Feb*, 2006,
THIS PLAT WAS PRESENTED AND ADMITTED TO RECORD AS THE
LAW DIRECTS AS INSTRUMENT NUMBER *060003014* *9:27am*

TESTE: *Lynn S. Jenkins*
CLERK

BY: *Anna Bragdon*
DEPUTY CLERK