

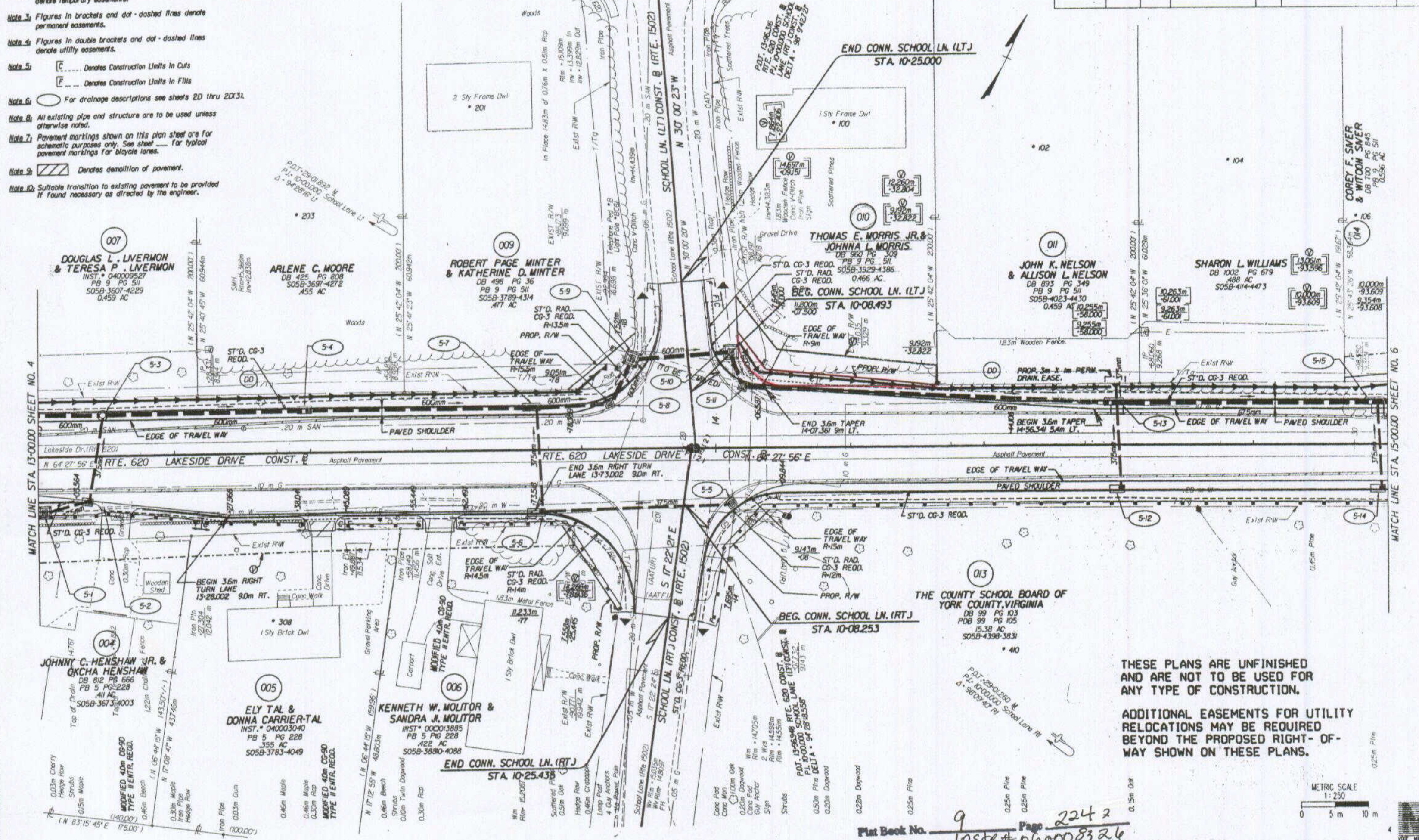
- Note 1: See General Notes for Erosion & Siltation legend.
- Note 2: Figures in parenthesis and dot-dot-dashed lines denote temporary easements.
- Note 3: Figures in brackets and dot-dashed lines denote permanent easements.
- Note 4: Figures in double brackets and dot-dashed lines denote utility easements.
- Note 5: [C] Denotes Construction Limits in Cuts
[E] Denotes Construction Limits in Fills
- Note 6: [O] For drainage descriptions see sheets 2D thru 2DX1.
- Note 7: All existing pipe and structure are to be used unless otherwise noted.
- Note 8: Pavement markings shown on this plan sheet are for schematic purposes only. See sheet [] for typical pavement markings for bicycle lanes.
- Note 9: [X] Denotes demolition of pavement.
- Note 10: Suitable transition to existing pavement to be provided if found necessary as directed by the engineer.

Note 11: Denotes 3.048M easement required for Verizon Virginia Inc.

Note 12:

DESIGN FEATURES RELATING TO CONSTRUCTION OR TO REGULATION AND CONTROL OF TRAFFIC MAY BE SUBJECT TO CHANGE AS DEEMED NECESSARY BY THE DEPARTMENT

REVISED	DATE	PROJECT	ROUTE	PROJECT	SHEET NO.
3	VA		620	0620-099-176, RW-201 C-501	5



THESE PLANS ARE UNFINISHED AND ARE NOT TO BE USED FOR ANY TYPE OF CONSTRUCTION.

ADDITIONAL EASEMENTS FOR UTILITY RELOCATIONS MAY BE REQUIRED BEYOND THE PROPOSED RIGHT-OF-WAY SHOWN ON THESE PLANS.



Flat Book No. 9 Page 2242
Instr# 060008326

SURVEYED BY: D. B. HARRIS, 02/19/05-2007
 SUPERVISED BY: CHERYL STALLINGS, 07/18/05-2006
 DESIGNED BY: JEE CHAIKIN, 07/18/05-2006
 CAD OPERATOR: [Name], 07/18/05-2006
 REVISED BY:

MATCH LINE STA 15+00.00 SHEET NO. 6

MATCH LINE STA 13+00.00 SHEET NO. 4