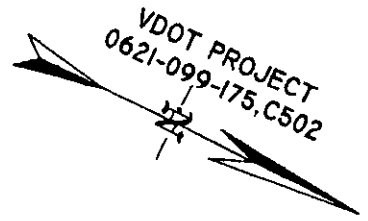


PG 0743 APR 10 05

LINE TABLE

E1	N6°24'10"E	8.89'
E2	S86°19'01"E	17.24'
E3	N17°13'20"E	70.76'
E4	S70°35'01"E	20.63'
E5	82°30'04"E	108.08'



N/F
 RAINBROOK VILLAS, LLC
 & VILLA DEVELOPMENT, LLC
 TM# 29-33-01-000A
 GPIN# S06A-0721-2943
 DB 1126, PG 324
 DB 1099, PG 70
 PB 13, PG 185
 PB 13, PG 341

TEMP. VAR. WIDTH DRAINAGE
 EASEMENT HEREBY CONVEYED
 TO COMMONWEALTH OF VA.
 DEPT. OF TRANSPORTATION
 AREA = 729.59 S.F.
 OR 0.02 AC.

EXISTING YORK CO.,
 10' DRAINAGE EASEMENT
 (PB 13, PG 182)

N/F
 GLEN LAUREL HOMEOWNER'S
 ASSOC., INC.,
 TM# 29-11-04-000A
 GPIN# S06A-0554-3500
 DB 879, PG 771

CURVE DATA: ②
 DELTA = 1°54'57"
 RADIUS = 1045.00'
 LENGTH = 34.94'
 TAN. = 17.47'
 CHORD = 34.94'
 CB = N89°58'26"E

N/F
 JOHN G. MARTIN CO., LLC
 TM# 29-00-00-017
 GPIN# S06A-0403-3262
 DB 888, PG 167

TEMP. CONSTR. EASEMENT
 HEREBY CONVEYED TO
 COMMONWEALTH OF VA.
 DEPT. OF TRANSPORTATION
 AREA = 3,756.87 S.F.
 OR 0.09 AC

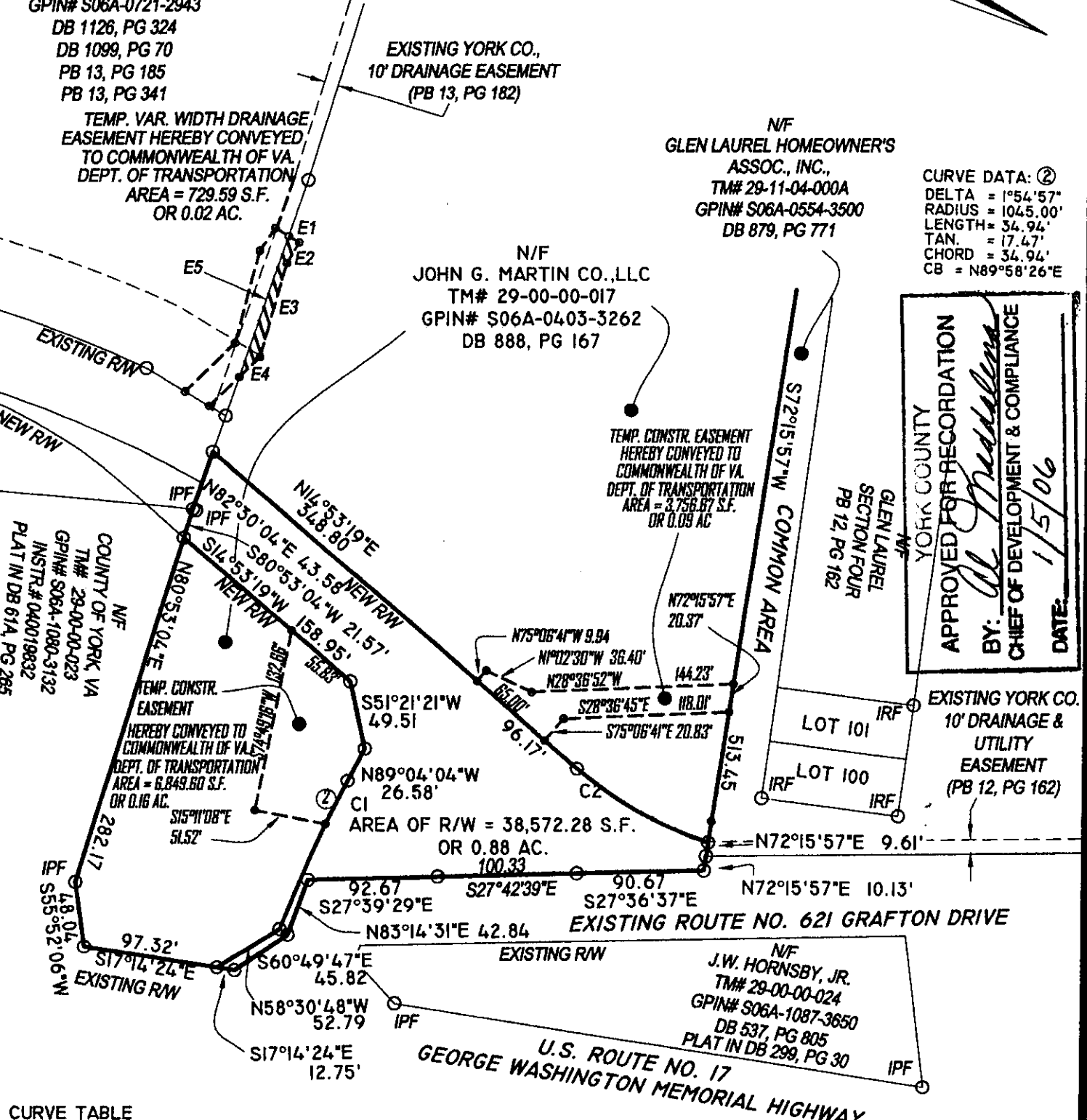
APPROVED FOR RECORDATION
 BY: *Al Madalena*
 CHIEF OF DEVELOPMENT & COMPLIANCE
 DATE: 1/15/06

N/F
 COUNTY OF YORK VA
 TM# 29-00-00-023
 GPIN# S06A-1080-3132
 INSTR# 040019832
 PLAT IN DB 61A, PG 285

TEMP. CONSTR.
 EASEMENT
 HEREBY CONVEYED TO
 COMMONWEALTH OF VA.
 DEPT. OF TRANSPORTATION
 AREA = 6,849.60 S.F.
 OR 0.16 AC.

GLEN LAUREL
 SECTION FOUR
 PB 12, PG 162

EXISTING YORK CO.
 10' DRAINAGE &
 UTILITY
 EASEMENT
 (PB 12, PG 162)



CURVE TABLE

#	DELTA	R=	LEN. =	TAN. =	CH =	CB
C1	6°25'47"	1045.00'	117.27'	58.70	117.21'	S87°43'01"W
C2	23°05'40"	270.00'	108.83'	55.16'	108.10'	N3°20'27"E



PLAT OF RIGHT-OF-WAY CONVEYANCE

FROM
 JOHN G. MARTIN CO., L.L.C.
 TO
 COUNTY OF YORK, VIRGINIA

LOCATED: GRAFTON DISTRICT,
 YORK COUNTY, VIRGINIA
 DATE: OCTOBER 10, 2005 SCALE: 1" = 100'
 REVISED DATE: NOVEMBER 7, 2005

MITCHELL-WILSON ASSOCIATES, P.C.
 CIVIL ENGINEERS & LAND SURVEYORS
 720 MAIN STREET, SUITE 112, 2ND FLOOR, P.O. BOX 1269
 WEST POINT, VIRGINIA 23181 (804) 843-9744