

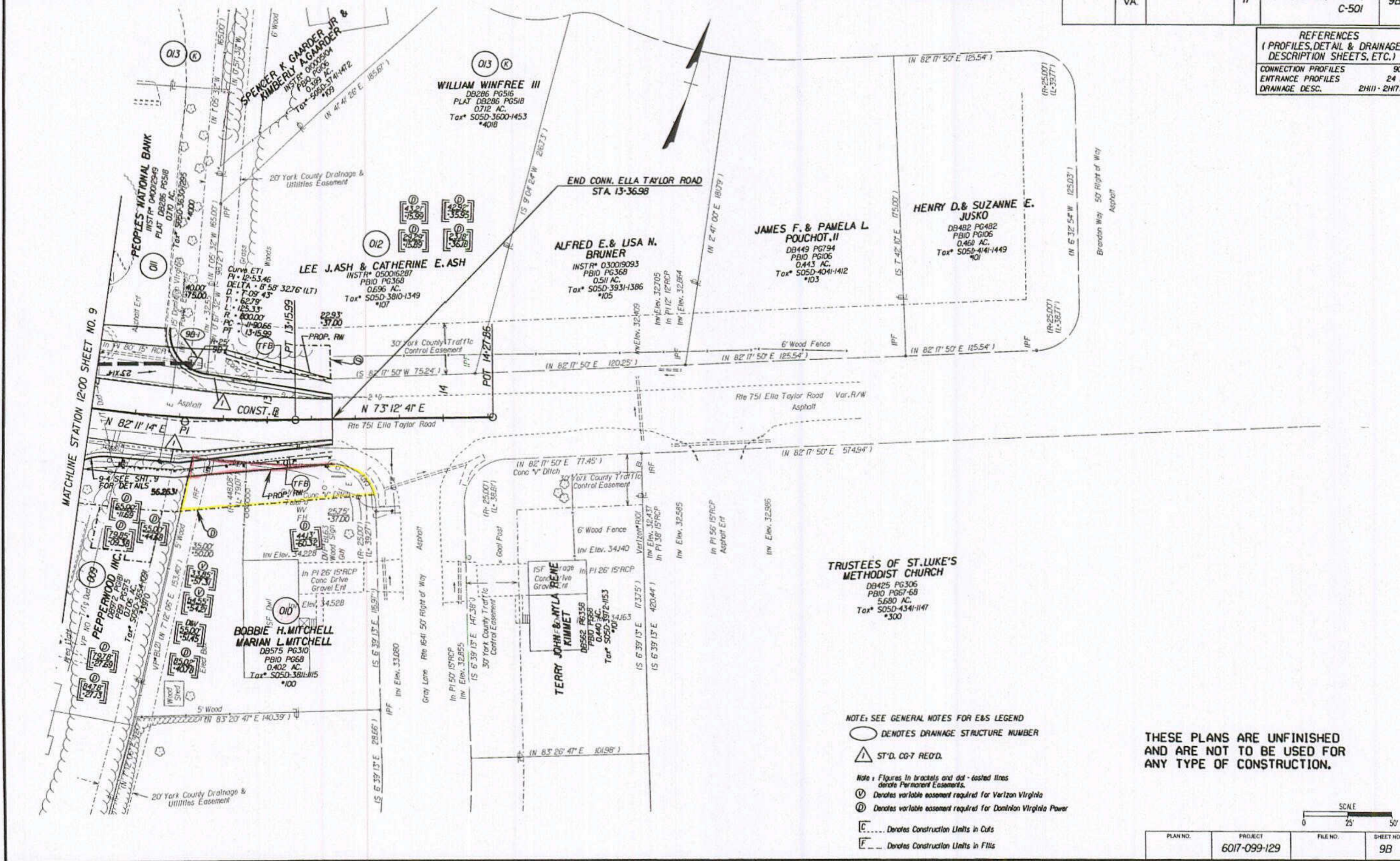
SURVEYED BY: BOB HANCOCK (151)253-537
 SUPERVISED BY: P.J. BYNUM (151)925-2557
 DESIGNED BY: M.D. WINSTEAD (151)925-2556
 HAMPTON ROADS DISTRICT DESIGN UNIT

DESIGN FEATURES RELATING TO CONSTRUCTION OR TO REGULATION AND CONTROL OF TRAFFIC MAY BE SUBJECT TO CHANGE AS DEEMED NECESSARY BY THE DEPARTMENT

REVISION	DATE	STATE	FEDERAL AID PROJECT	ROUTE	STATE PROJECT	SHEET NO.
12/09/05	02/06/06	03/23/06	VA	17	6017-099-129, RW-201, C-501	9B

REFERENCES
 (PROFILES, DETAIL & DRAINAGE DESCRIPTION SHEETS, ETC.)

CONNECTION PROFILES	9C
ENTRANCE PROFILES	24 I
DRAINAGE DESC.	2H(1) - 2H(7)



- NOTE: SEE GENERAL NOTES FOR E&S LEGEND
- DENOTES DRAINAGE STRUCTURE NUMBER
 - ▲ ST'D. CO-7 REQ'D.
 - Note: Figures in brackets and dot-dashed lines denote Permanent Easements.
 - Ⓢ Denotes variable easement required for Verizon Virginia
 - Ⓣ Denotes variable easement required for Dominion Virginia Power
 - ┌..... Denotes Construction Limits in Cuts
 - └..... Denotes Construction Limits in Fills

THESE PLANS ARE UNFINISHED AND ARE NOT TO BE USED FOR ANY TYPE OF CONSTRUCTION.

SCALE
0 25' 50'

PLAN NO.	PROJECT	FILE NO.	SHEET NO.
	6017-099-129		9B

State Highway Plat Book No. 9 Page 257
 document instr # 060023430