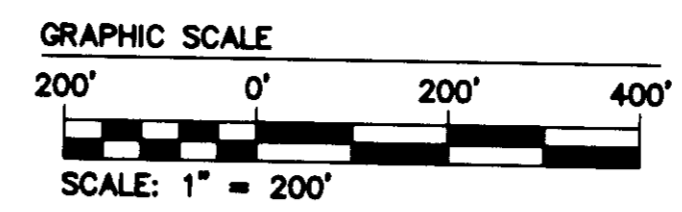


NOTES:

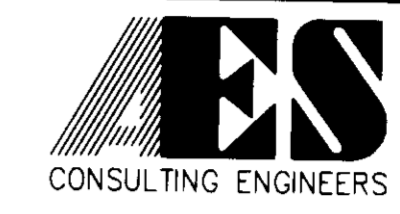
- COORDINATE VALUES (X,Y) SHOWN HEREON ARE INTENDED FOR GIS PURPOSES ONLY.
- THIS PLAT IS BASED UPON A PLAT ENTITLED "PLAT SHOWING BOUNDARY LINE ADJUSTMENT BETWEEN THE PROPERTIES OF LANDMARK RESORT PROPERTIES OF VA, LLC, AND WILLIAMSBURG COUNTRY CLUB, INC., AS PREPARED BY AES CONSULTING ENGINEERS, DATED NOVEMBER 19, 2005. (PLAT IS RECORDED IN INSTRUMENT #060008693; THIS PROPERTY HAS NOT BEEN RESURVEYED IN THE CREATION OF THIS DOCUMENT)



PLAT OF DRAINAGE EASEMENT DEDICATIONS FROM LANDMARK RESORT PROPERTIES OF VA, LLC & WILLIAMSBURG COUNTRY CLUB, LLC TO COUNTY OF YORK, VIRGINIA

BRUTON MAGISTERIAL DISTRICT YORK COUNTY VIRGINIA

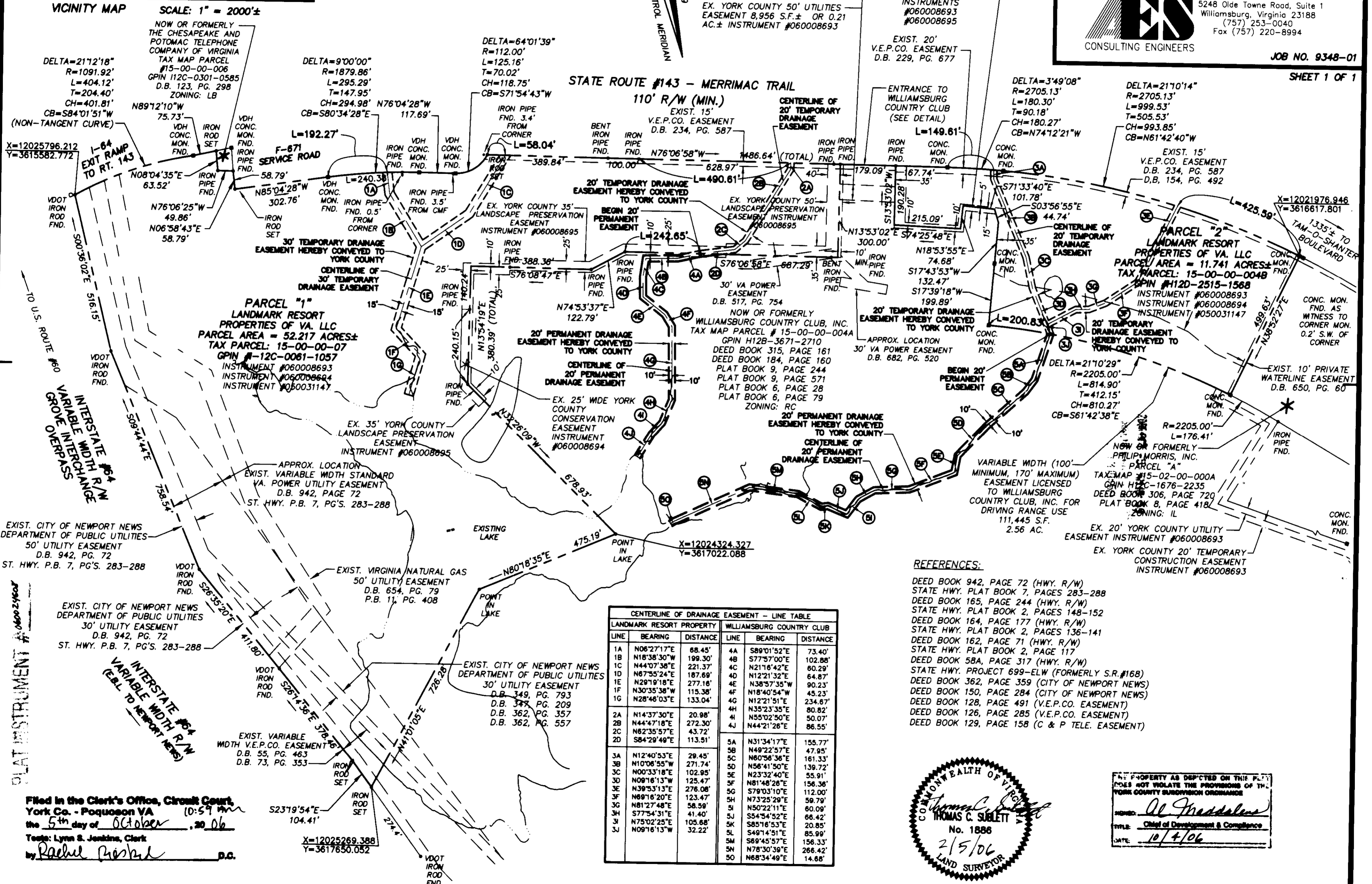
DATE: FEB. 3, 2006 SCALE: 1" = 200' DRAWN: GVC



5248 Olde Towne Road, Suite 1
Williamsburg, Virginia 23188
(757) 253-0040
Fax (757) 220-8994

JOB NO. 9348-01

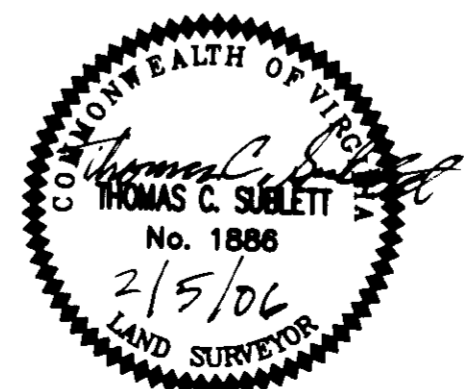
SHEET 1 OF 1



CENTERLINE OF DRAINAGE EASEMENT - LINE TABLE

LANDMARK RESORT PROPERTY			WILLIAMSBURG COUNTRY CLUB		
LINE	BEARING	DISTANCE	LINE	BEARING	DISTANCE
1A	N06°27'17"E	68.45'	4A	S89°01'52"E	73.40'
1B	N18°38'30"W	199.30'	4B	S77°57'00"E	102.88'
1C	N44°07'38"E	221.37'	4C	N21°16'42"E	60.29'
1D	N67°55'24"E	187.69'	4D	N12°21'32"E	64.87'
1E	N28°19'18"E	277.16'	4E	N38°57'35"W	90.23'
1F	N30°35'38"W	115.38'	4F	N18°40'54"W	45.23'
1G	N28°46'03"E	133.04'	4G	N12°21'51"E	234.67'
2A	N14°37'30"E	20.98'	4H	N35°23'35"E	80.82'
2B	N44°47'18"E	272.30'	4I	N55°02'50"E	50.07'
2C	N82°35'57"E	43.72'	4J	N44°21'26"E	86.55'
2D	S84°29'49"E	113.51'			
3A	N12°40'53"E	29.45'	5A	N31°34'17"E	155.77'
3B	N10°06'55"W	271.74'	5B	N49°22'57"E	47.95'
3C	N00°33'18"E	102.95'	5C	N60°56'36"E	161.33'
3D	N09°16'13"W	125.47'	5D	N56°41'50"E	139.72'
3E	N39°53'13"E	276.08'	5E	N23°32'40"E	55.91'
3F	N89°16'20"E	123.47'	5F	N81°48'26"E	156.36'
3G	N81°27'48"E	58.59'	5G	S79°03'10"E	112.00'
3H	S77°54'31"E	41.40'	5H	N73°25'29"E	59.79'
3I	N75°02'25"E	105.68'	5I	N50°22'11"E	60.09'
3J	N09°16'13"W	32.22'	5J	S54°54'52"E	66.42'
			5K	S85°16'53"E	20.85'
			5L	S49°14'51"E	85.99'
			5M	S89°45'57"E	156.33'
			5N	N78°30'39"E	266.42'
			5O	N68°34'49"E	14.68'

- REFERENCES:**
- DEED BOOK 942, PAGE 72 (HWY. R/W)
 - STATE HWY. PLAT BOOK 7, PAGES 283-288
 - DEED BOOK 165, PAGE 244 (HWY. R/W)
 - STATE HWY. PLAT BOOK 2, PAGES 148-152
 - DEED BOOK 164, PAGE 177 (HWY. R/W)
 - STATE HWY. PLAT BOOK 2, PAGES 136-141
 - DEED BOOK 162, PAGE 71 (HWY. R/W)
 - STATE HWY. PLAT BOOK 2, PAGE 117
 - DEED BOOK 58A, PAGE 317 (HWY. R/W)
 - STATE HWY. PROJECT 699-ELW (FORMERLY S.R. #168)
 - DEED BOOK 362, PAGE 359 (CITY OF NEWPORT NEWS)
 - DEED BOOK 150, PAGE 284 (CITY OF NEWPORT NEWS)
 - DEED BOOK 128, PAGE 491 (V.E.P.CO. EASEMENT)
 - DEED BOOK 126, PAGE 285 (V.E.P.CO. EASEMENT)
 - DEED BOOK 129, PAGE 158 (C & P TELE. EASEMENT)



PROPERTY AS SHOWN ON THIS PLAT DOES NOT VIOLATE THE PROVISIONS OF THE YORK COUNTY SUBDIVISION ORDINANCE

Signed: *Al Maddalena*
Title: Chief of Development & Compliance
Date: 10/4/06

Filed in the Clerk's Office, Circuit Court, York Co. - Poquoson VA the 5th day of October, 2006
Tells: Lynn S. Jenkins, Clerk
by: *Rachel Poshel* D.C.

S:\Jobs\9348\01-Landmark Building & Development\Plats\Drainage Easement Plat.dwg 2/3/2006 4:09:36 PM EST

2006 08T -5 AM 10:59