

SURVEYED BY: J. H. HARRIS (151) 253-5137  
SUPERVISED BY: P. H. BIRUM (151) 925-2557  
DESIGNED BY: M. L. WINSTEAD (151) 988-8556  
HAMPTON ROADS DISTRICT DESIGN UNIT

doc# 080009661  
State Hwy Plat Book # 10 Pg 219

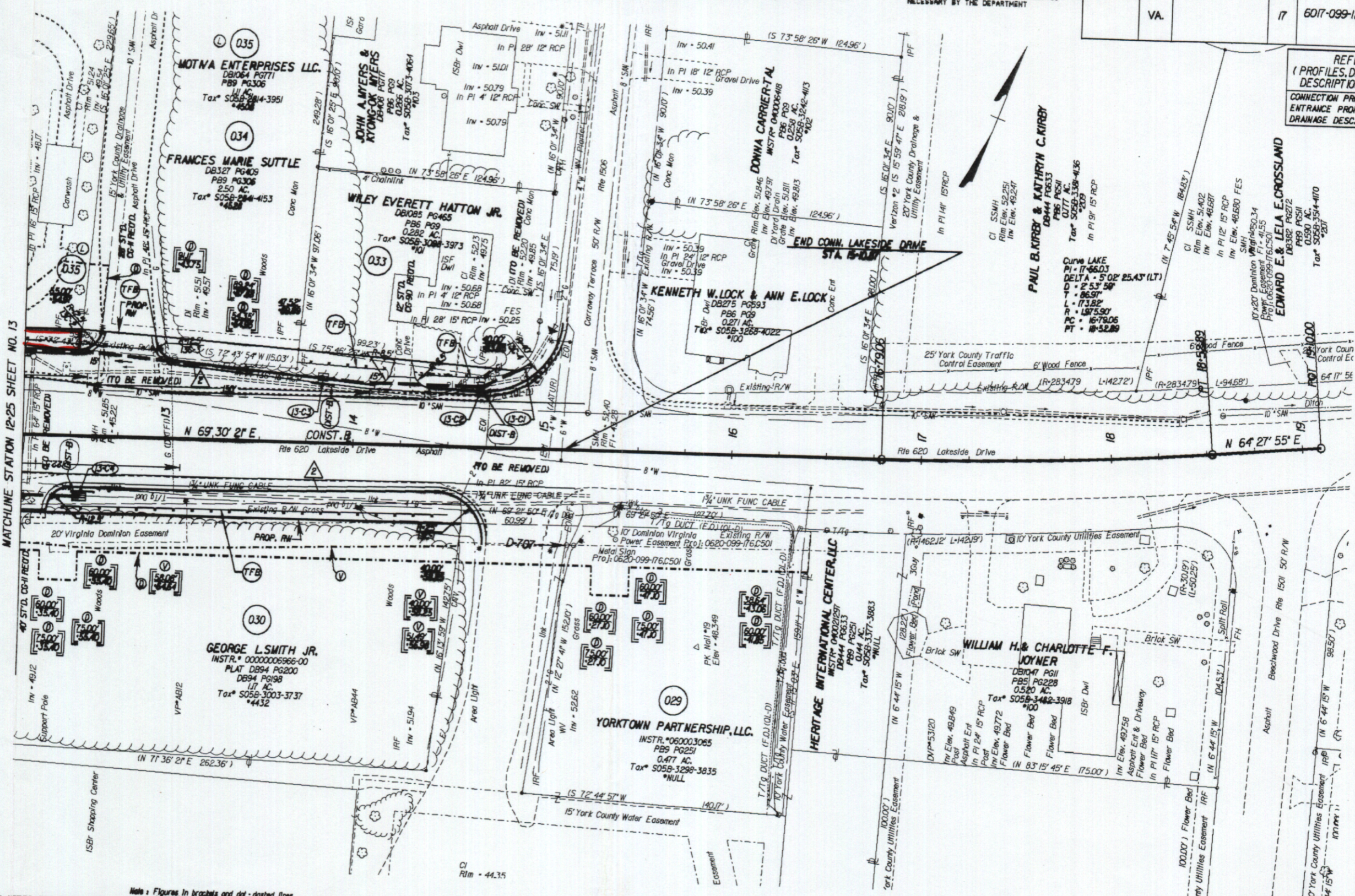
DESIGN FEATURES RELATING TO CONSTRUCTION OR TO REGULATION AND CONTROL OF TRAFFIC MAY BE SUBJECT TO CHANGE AS DEEMED NECESSARY BY THE DEPARTMENT

REVISION	DATE	STATE	FEDERAL AID PROJECT	ROUTE	STATE PROJECT	SHEET NO.
06/06/06 07/25/06		VA.		17	6017-099-129, RW-201, C-501	13C

REFERENCES  
(PROFILES, DETAIL & DRAINAGE DESCRIPTION SHEETS, ETC.)

CONNECTION PROFILES	13D
ENTRANCE PROFILES	24J
DRAINAGE DESC.	2M(1) - 2M(7)

THESE PLANS ARE UNFINISHED AND ARE NOT TO BE USED FOR ANY TYPE OF CONSTRUCTION.



MATCHLINE STATION 12+25 SHEET NO. 13

NOTE: SEE GENERAL NOTES FOR E&S LEGEND

○ DENOTES DRAINAGE STRUCTURE NUMBER

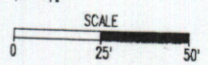
○ (with dot-dashed line) Denotes variable easement required for Verizon Virginia

○ (with solid line) Denotes variable easement required for Dominion Virginia Power

--- Denotes Construction Limits In Cuts

--- Denotes Construction Limits In Fills

△ ST'D. CG-6 REO'D.



PLAN NO.	PROJECT	FILE NO.	SHEET NO.
	6017-099-129		13C

29(14)A