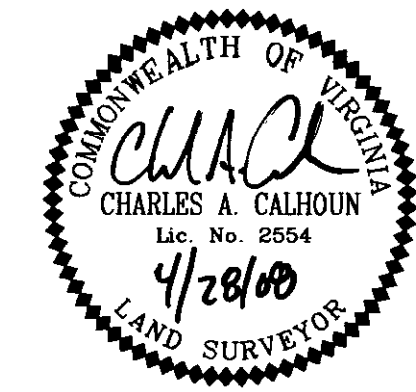
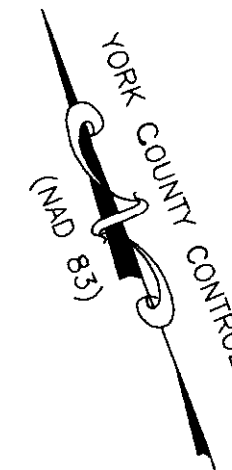


CURVE TABLE

NUMBER	DELTA	CHORD BEARING	TANGENT	RADIUS	ARC	CHORD
C1	23°32'22"	S 41°23'55" W	198.81	954.16	392.01	389.26
C2	23°58'17"	S 65°09'15" W	198.39	934.51	390.98	388.13
C3	26°08'52"	N 89°47'10" W	207.38	893.01	407.54	404.01
C4	22°47'21"	N 19°50'33" W	13.57	67.32	26.78	26.60
C5	51°40'06"	N 57°04'58" W	9.02	18.63	16.80	16.24
C6	20°17'00"	N 64°07'48" W	169.16	945.69	334.79	333.04
C7	04°22'00"	N 76°27'18" W	43.58	1143.20	87.13	87.11

LINE TABLE

NO.	DIRECTION	DISTANCE
L1	S 29°37'44" W	23.74'
L2	N 04°42'08" E	144.77'
L3	N 81°41'21" W	23.14'
L4	N 05°02'50" E	69.61'
L5	N 82°54'20" W	114.11'
L6	S 07°16'14" W	8.90'
L7	N 62°04'33" W	15.17'
L8	N 63°12'49" W	134.69'
L9	S 07°04'51" W	199.26'
L10	N 54°46'21" W	60.10'
L11	N 55°42'23" W	167.05'



SUBDIVISION PLAT OF RIVERWALK TOWNES

PHASE II

NELSON MAGISTERIAL DISTRICT YORK COUNTY, VIRGINIA

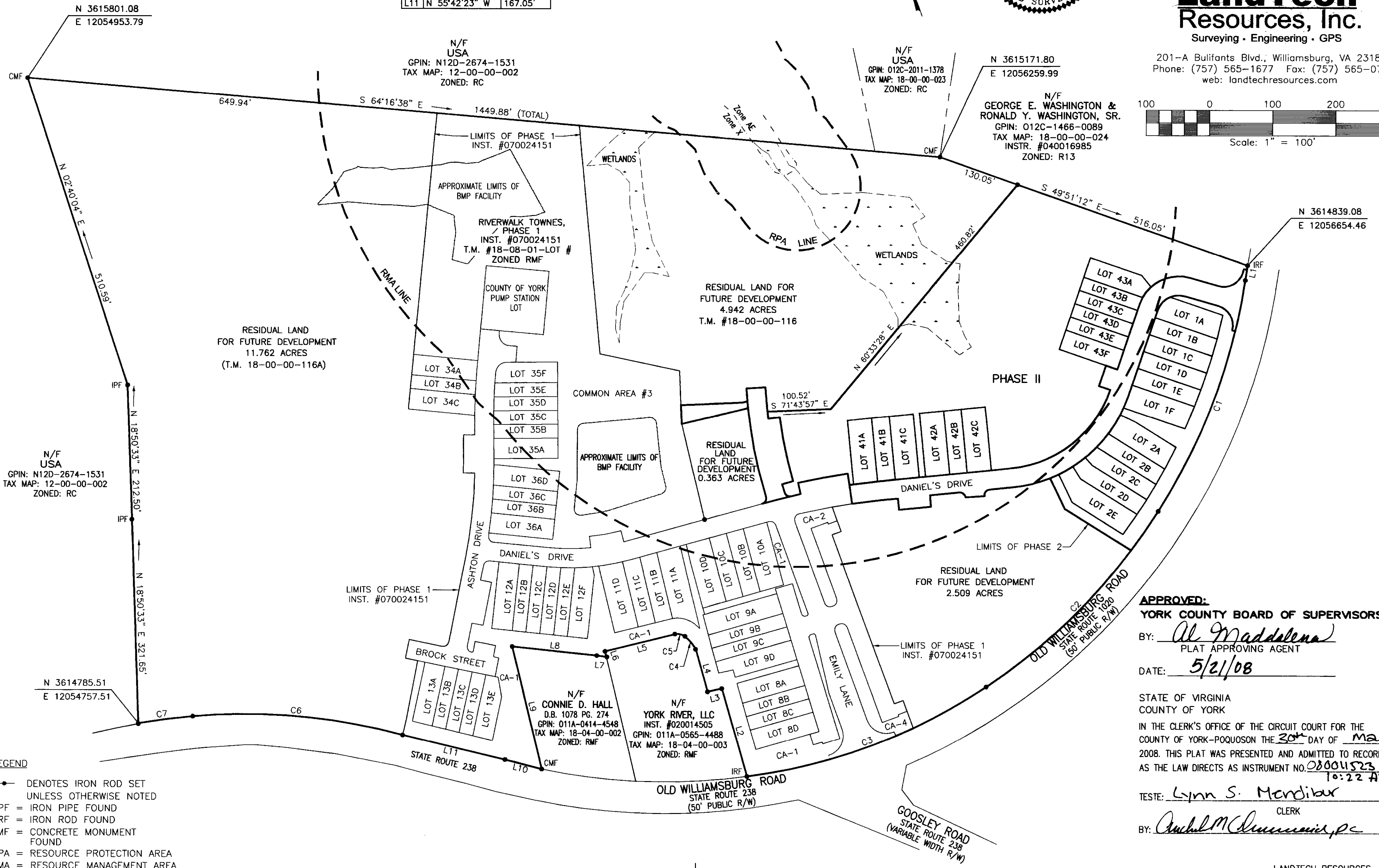
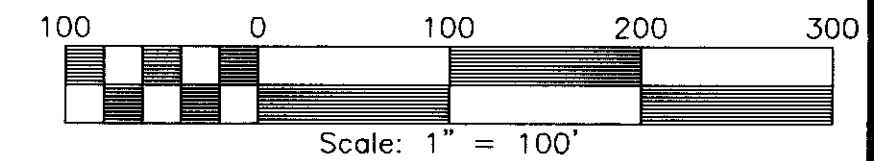
DATE: 2/20/08 SCALE: 1"=100' JOB #07-130 REV: 4/28/08

SHEET 2 OF 4

LandTech Resources, Inc.

Surveying • Engineering • GPS

201-A Bulifants Blvd., Williamsburg, VA 23188
Phone: (757) 565-1677 Fax: (757) 565-0782
web: landtechresources.com



- LEGEND**
- DENOTES IRON ROD SET UNLESS OTHERWISE NOTED
 - IPF = IRON PIPE FOUND
 - IRF = IRON ROD FOUND
 - CMF = CONCRETE MONUMENT FOUND
 - RPA = RESOURCE PROTECTION AREA
 - RMA = RESOURCE MANAGEMENT AREA

APPROVED:
YORK COUNTY BOARD OF SUPERVISORS
 BY: *Al Maddalena*
 PLAT APPROVING AGENT
 DATE: 5/21/08

STATE OF VIRGINIA
 COUNTY OF YORK
 IN THE CLERK'S OFFICE OF THE CIRCUIT COURT FOR THE COUNTY OF YORK-POQUOSON THE 30th DAY OF May 2008. THIS PLAT WAS PRESENTED AND ADMITTED TO RECORD AS THE LAW DIRECTS AS INSTRUMENT NO. 08001523
 10:22 AM

TESTE: *Lynn S. Mandibar*
 CLERK
 BY: *Amel M. Cummings, PC*