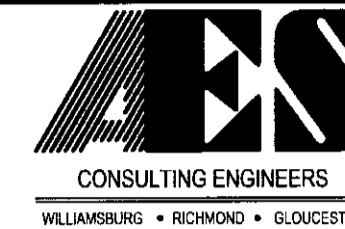


2008 JUL 23 AM 8:40

PLAT OF SUBDIVISION THE RESERVE AT WILLIAMSBURG

BRUTON DISTRICT COUNTY OF YORK VIRGINIA
DATE: 07/25/07 SCALE: 1" = 200' DRAWN: AWT



5248 Olde Towne Road, Suite 1
Williamsburg, Virginia 23188
(757) 253-0040
Fax (757) 220-8994
JOB NO. 9128-08

SHEET 2 OF 2

GRAPHIC SCALE



SCALE: 1" = 200'

CURVE TABLE

CURVE	DELTA	RADIUS	LENGTH	TANGENT	CHORD	CHORD BEARING
C1	2'43"24"	5690.53'	270.47'	135.26'	270.47'	N15'33'04"W
C2	6'03"11"	5788.96'	611.58'	306.08'	611.30'	N17'18'31"W
C3	2'34'15"	5690.53'	255.32'	127.69'	255.31'	N15'37'39"W
C4	0'09'09"	5690.53'	15.15'	7.57'	15.14'	N14'15'57"W
C5	4'30'43"	5788.96'	455.87'	228.05'	455.75'	N16'32'17"W
C6	1'22'47"	5788.96'	139.40'	69.70'	139.40'	N19'29'02"W
C7	0'09'41"	5788.96'	16.31'	8.16'	16.30'	N20'15'16"W
C8	90'17'10"	25.00'	39.39'	25.13'	35.44'	S65'19'01"E
C9	25'40'04"	961.35'	430.67'	219.01'	427.08'	N56'42'32"E
C10	12'23'36"	720.00'	155.74'	78.17'	155.44'	N38'02'25"E
C11	17'40'00"	570.00'	175.76'	88.58'	175.06'	N23'00'37"E
C12	64'54'08"	430.00'	487.09'	273.42'	461.46'	N46'37'41"E
C13	52'21'03"	190.00'	173.60'	93.39'	167.63'	N52'54'13"E
C14	72'53'44"	25.00'	31.81'	18.46'	29.70'	N09'43'10"W
C15	172'29'22"	60.00'	180.63'	91.13'	119.74'	N40'04'39"E
C16	52'21'03"	250.00'	228.42'	122.88'	220.56'	S52'54'13"W
C17	64'54'08"	370.00'	419.12'	235.27'	397.08'	S46'37'41"W
C18	17'40'00"	630.00'	194.26'	97.90'	193.49'	S23'00'37"W
C19	12'23'36"	780.00'	168.72'	84.69'	168.39'	S38'02'25"W
C20	25'18'11"	738.65'	326.20'	165.80'	323.56'	S56'53'18"W
C21	88'16'58"	25.00'	38.52'	24.26'	34.82'	S25'23'55"W
C22	20'11'54"	961.35'	338.90'	171.23'	337.15'	S59'26'37"W
C23	56'28'11"	961.35'	91.77'	45.92'	91.74'	N46'36'35"E
C24	5'27'09"	570.00'	54.25'	27.14'	54.22'	N29'07'02"E
C25	12'12'51"	570.00'	121.51'	60.99'	121.28'	N20'17'02"E
C26	94'44'11"	25.00'	41.34'	27.16'	36.79'	N20'58'38"W
C27	28'43'19"	320.00'	160.41'	81.93'	158.74'	N53'59'03"W
C28	90'00'00"	27.98'	43.96'	27.98'	39.57'	N84'37'24"W
C29	26'17'42"	370.00'	169.81'	86.43'	168.32'	S65'55'54"W
C30	22'11'32"	370.00'	143.31'	72.57'	142.42'	S41'41'17"W
C31	16'24'54"	370.00'	106.00'	53.37'	105.64'	S22'23'04"W
C32	11'23'16"	738.65'	73.65'	146.81'	146.81'	S49'55'51"W
C33	13'54'55"	738.65'	179.39'	90.14'	178.95'	S62'34'56"W

LEGEND

- PROPERTY LINE
- RIGHT-OF-WAY LINE
- EASEMENT
- MONUMENT SET
- CMF CONCRETE MONUMENT FOUND
- IRS IRON ROD SET
- IRF IRON ROD FOUND
- RPA RESOURCE PROTECTION AREA
- RMA RESOURCE MANAGEMENT AREA
- R/W RIGHT-OF-WAY
- PP POWER POLE
- N/F NOW / FORMERLY

APPROVED:
YORK COUNTY BOARD OF SUPERVISORS

BY: *Al Maddalena*, PLAT APPROVING AGENT

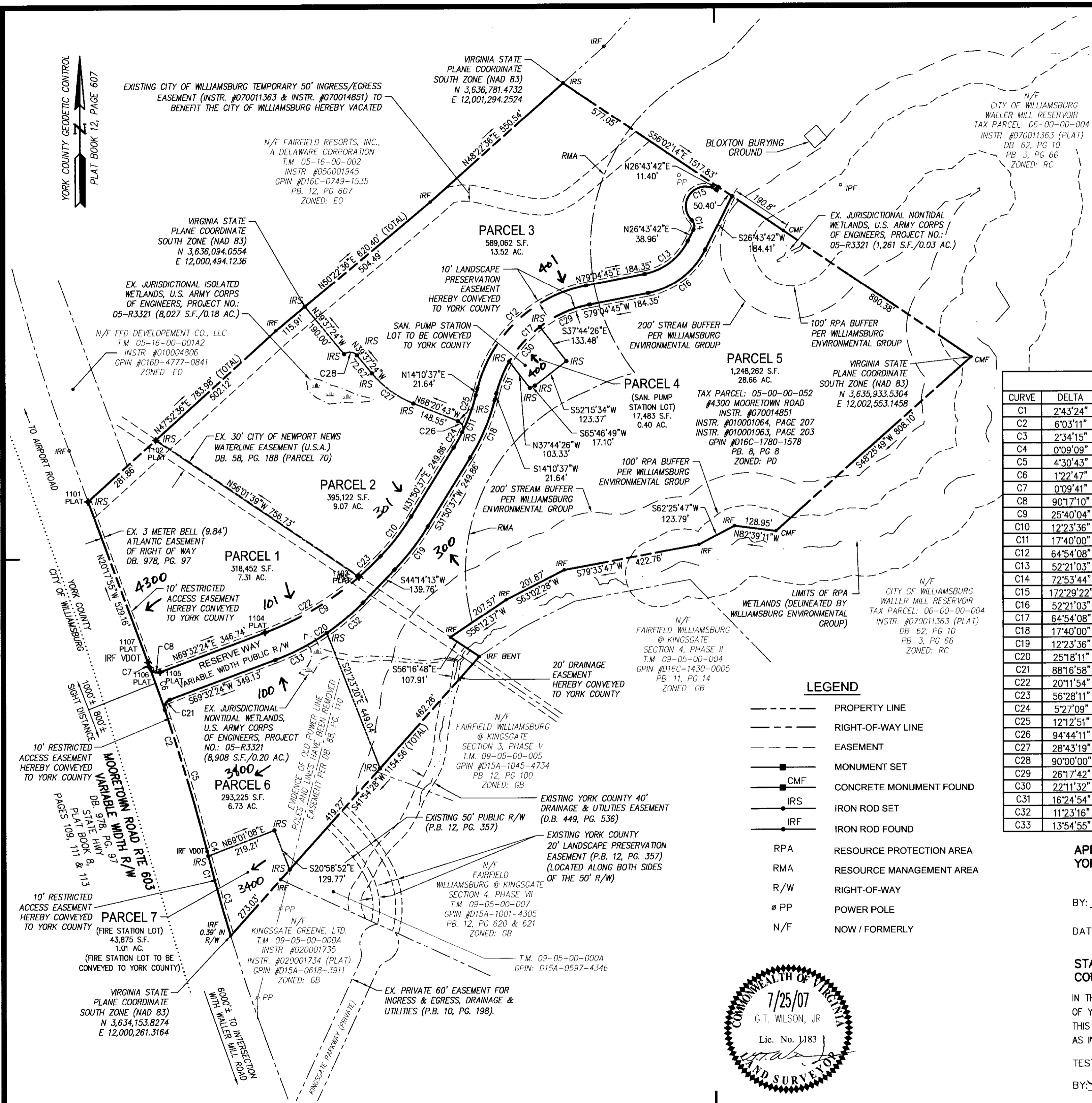
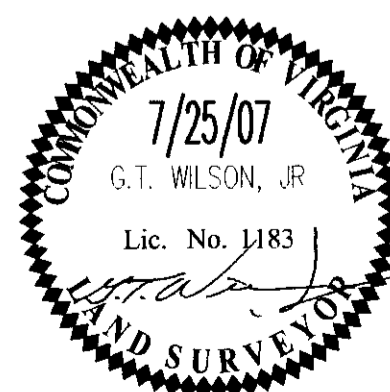
DATE: *7/15/08*

STATE OF VIRGINIA
COUNTY OF YORK

IN THE CLERK'S OFFICE OF THE CIRCUIT COURT FOR THE COUNTY OF YORK-POQUOSON THE 23rd DAY OF *July*, 2008.
THIS MAP WAS PRESENTED FOR RECORD AS THE LAW DIRECTS, AS INSTRUMENT NO. *080016943*

TESTE: *Lynn S. Mendibara*, 8:39 AM
CLERK

BY: *Valerie Lynn Barber*



S:\Jobs\9128\08-Reserve-PumpStn&Rd\dwg\Plat\912808 SUBD SH 2.dwg, 7/14/2008 8:33:59 AM, Tony Taylor