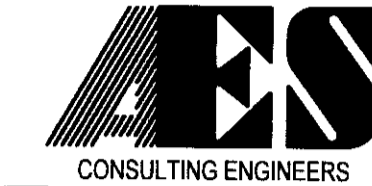


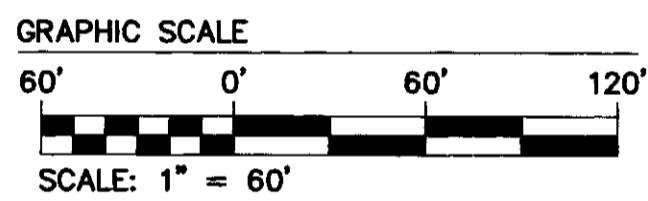
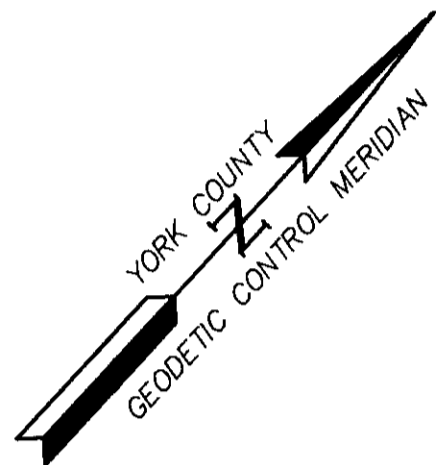
PLAT OF UTILITY EASEMENT
 FROM: LAND'OR WILLIAMSBURG, LLC
 TO: THE COUNTY OF YORK

YORK COUNTY BRUTON DISTRICT VIRGINIA
 DATE: 08/21/07 SCALE: 1"=60' DRAWN: RLS



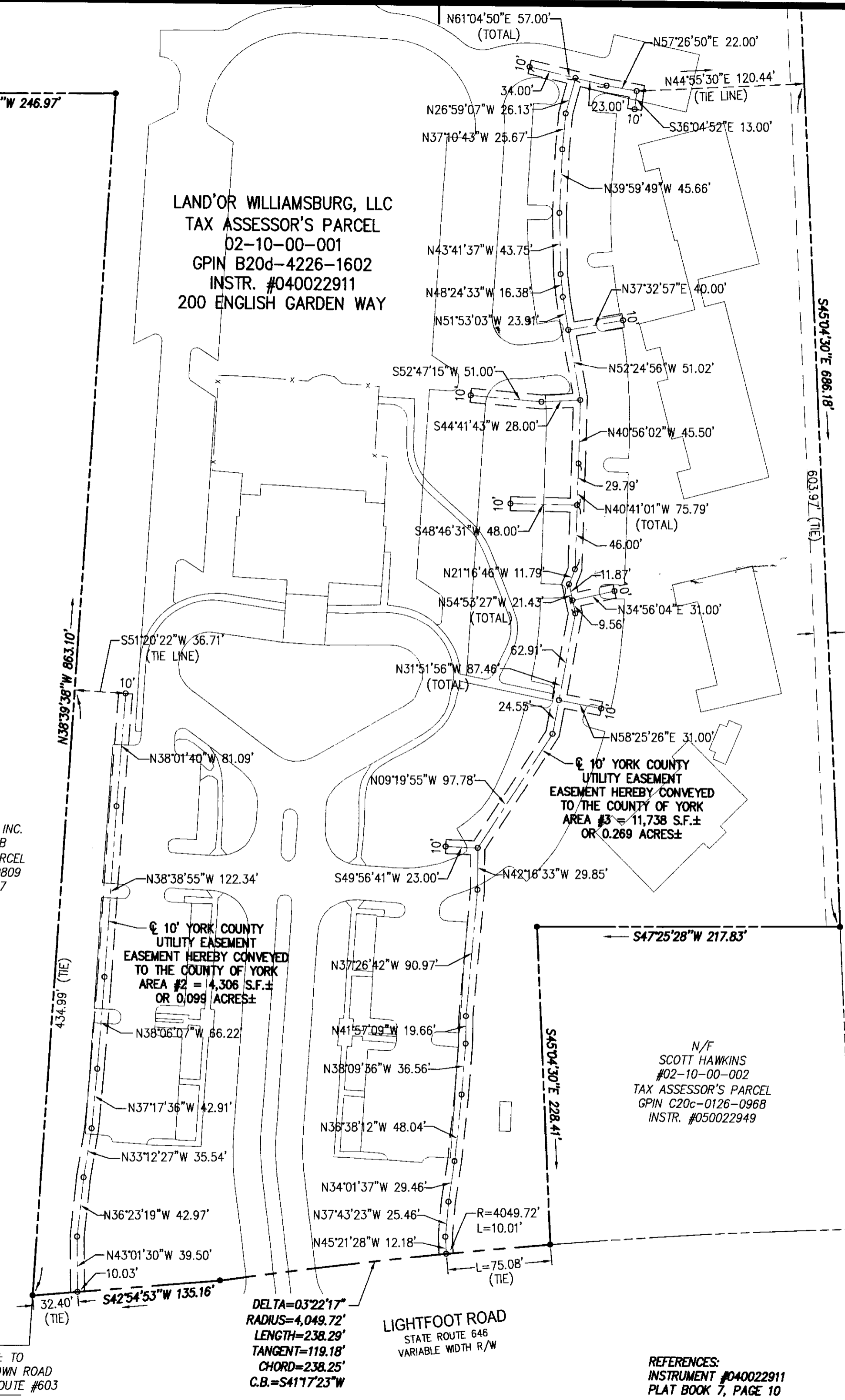
5248 Olde Towne Road, Suite 1
 Williamsburg, Virginia 23188
 (757) 253-0040
 Fax (757) 220-8994
 JOB NO. 8941-06

SHEET 2 OF 2



N/F
 WILLIAMSBURG
 POTTERY FACTORY, INC.
 #02-00-00-015B
 TAX ASSESSOR'S PARCEL
 GPIN B20d-4576-0809
 D.B. 464, PG. 197

LAND'OR WILLIAMSBURG, LLC
 TAX ASSESSOR'S PARCEL
 02-10-00-001
 GPIN B20d-4226-1602
 INSTR. #040022911
 200 ENGLISH GARDEN WAY



EXISTING 10' YORK
 COUNTY DRAINAGE AND
 UTILITY EASEMENT

N/F
 NSD, L.L.C.
 TAX ASSESSOR'S PARCEL
 02-00-00-014B
 GPIN B20d-4999-1346
 D.B. 1039, PG. 660

10' YORK COUNTY
 UTILITY EASEMENT
 HEREBY CONVEYED
 TO THE COUNTY OF YORK
 AREA #3 = 11,738 S.F. ±
 OR 0.269 ACRES ±

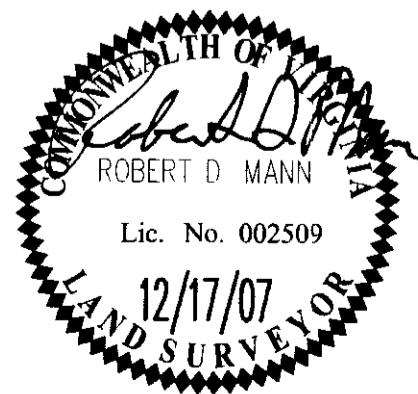
10' YORK COUNTY
 UTILITY EASEMENT
 HEREBY CONVEYED
 TO THE COUNTY OF YORK
 AREA #2 = 4,306 S.F. ±
 OR 0.099 ACRES ±

N/F
 SCOTT HAWKINS
 #02-10-00-002
 TAX ASSESSOR'S PARCEL
 GPIN C20c-0126-0968
 INSTR. #050022949

Filed in the Clerk's Office, Circuit Court,
 York Co. - Poquoson, VA
 the 29th day of July, 2008
 Teste: Lynn S. Merriam, Clerk 1:54 p.m.
 by: *Valeria Lynn Babbler*, D.C.

PLAT INSTRUMENT # LR080017512

YORK COUNTY
 APPROVED FOR RECORDATION
 BY: *Al Maddalena*
 CHIEF OF DEVELOPMENT & CONFORMANCE
 DATE: 7/28/08



0.5 MI. ± TO
 MOORETOWN ROAD
 STATE ROUTE #603

DELTA=03°22'17"
 RADIUS=4,049.72'
 LENGTH=238.29'
 TANGENT=119.18'
 CHORD=238.25'
 C.B.=S41°17'23"W

LIGHTFOOT ROAD
 STATE ROUTE 646
 VARIABLE WIDTH R/W

REFERENCES:
 INSTRUMENT #040022911
 PLAT BOOK 7, PAGE 10

No.	DATE	REVISION / COMMENT / NOTE	AWT	RDM
1	12/17/07	REVISED PER COUNTY COMMENTS DATED 11/27/07	AWT	RDM
			REVISED BY	REVIEWED BY