

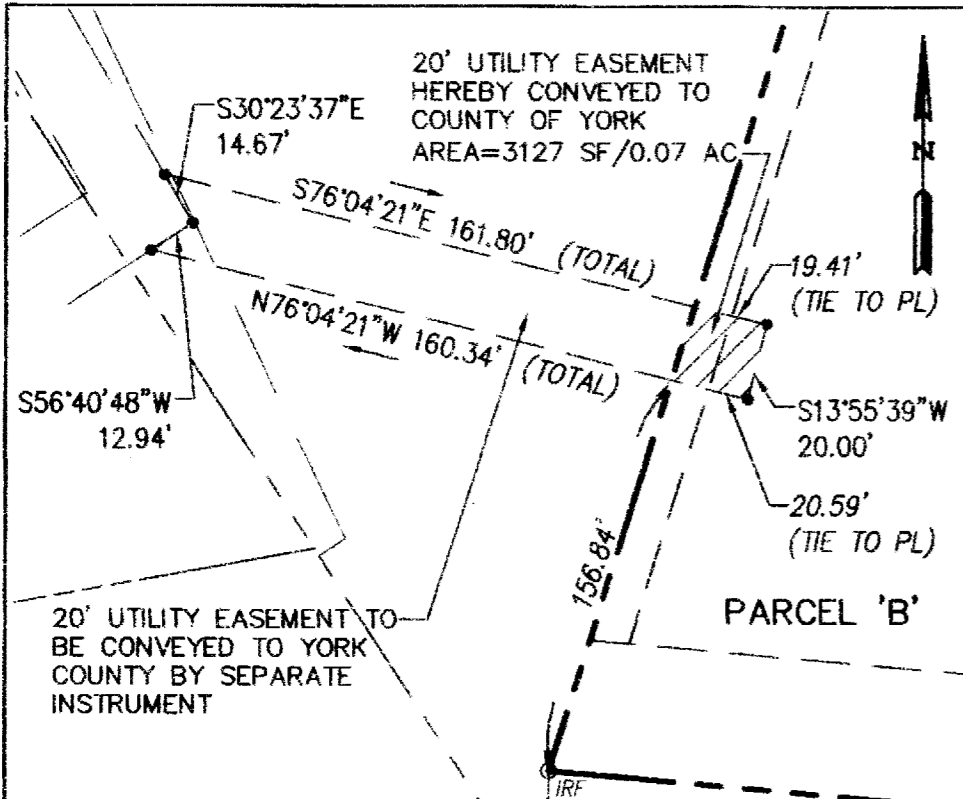
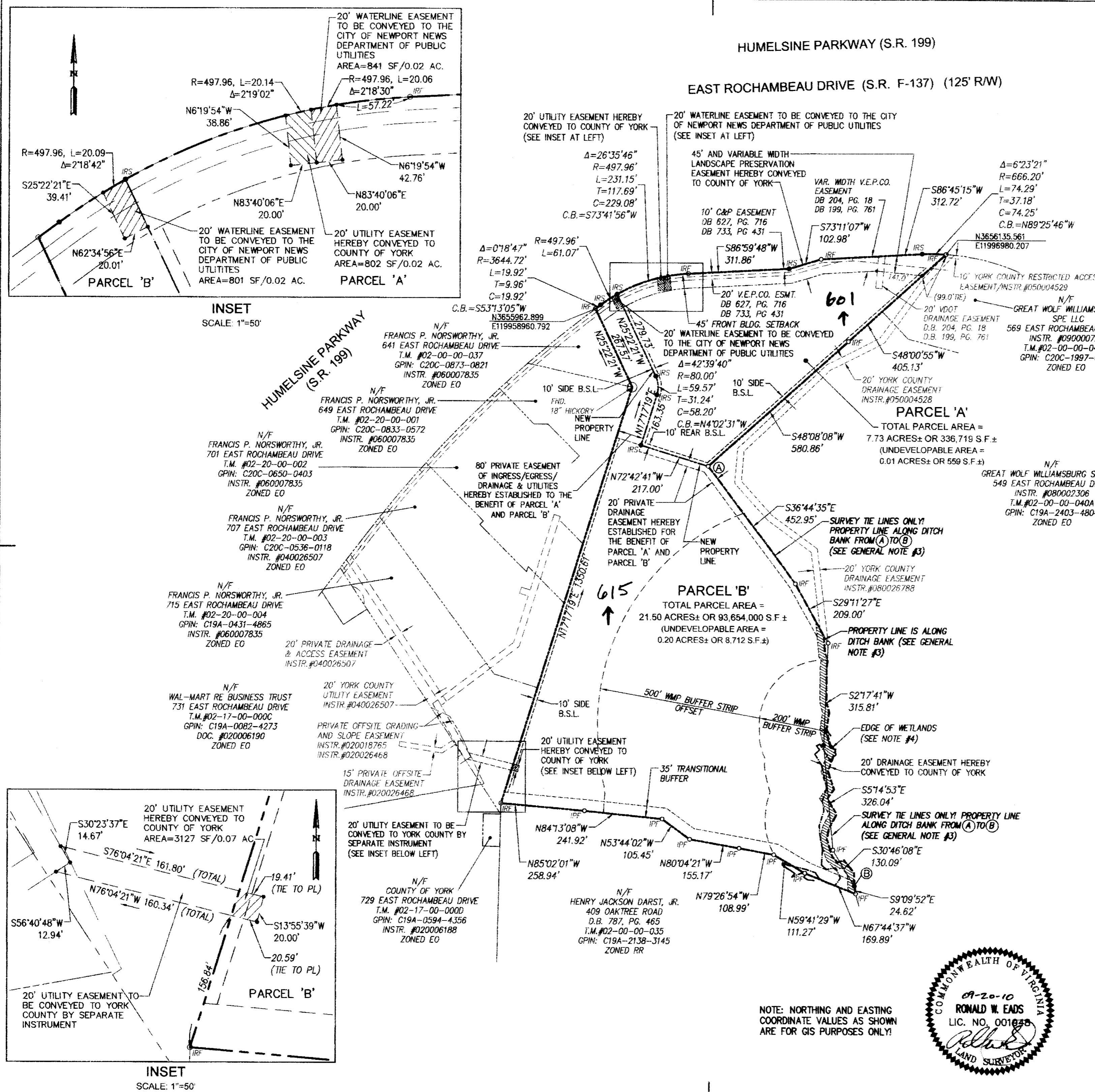
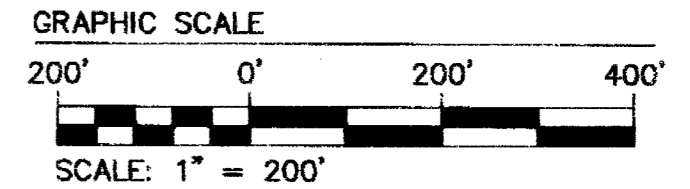
PLAT OF SUBDIVISION ROCHAMBEAU PROPERTY, LLC

SHEET 2 OF 2

BRUTON DISTRICT YORK COUNTY VIRGINIA
Date: 09/20/10 Scale: 1"=200' Proj. No.: 9645-04 Proj. Contacts: RWE



5248 Old Towne Road, Suite 1
Williamsburg, Virginia 23186
Phone: (757) 253-0040
Fax: (757) 220-8954
www.aesva.com



INSET
SCALE: 1"=50'

INSET
SCALE: 1"=50'

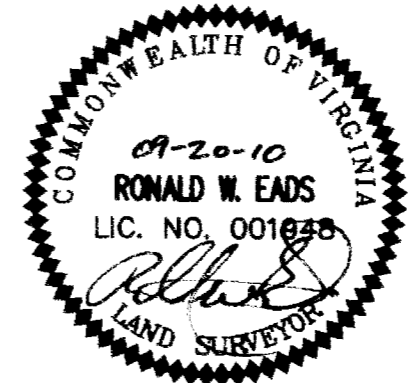


LEGEND

- PROPERTY LINE
- RIGHT-OF-WAY LINE
- - - EASEMENT
- RAW MONUMENT SET
- CMF
- CONCRETE MONUMENT FOUND
- IRF
- IRF
- IPF
- IPF
- WMP WATERSHED MANAGEMENT AND PROTECTION AREA OVERLAY DISTRICT
- B.S.L. BUILDING SETBACK LINE
- N/F NOW / FORMERLY

APPROVED
YORK COUNTY BOARD OF SUPERVISORS
BY: *Al Maddolena*
PLAT APPROVING AGENT
DATE: 10/20/10

STATE OF VIRGINIA
COUNTY OF YORK
IN THE CLERK'S OFFICE OF THE CIRCUIT COURT FOR THE COUNTY OF YORK-POQUOSON THE 20th DAY OF October, 2010.
THIS MAP WAS PRESENTED FOR RECORD AS THE LAW DIRECTS, AS INSTRUMENT NO. LR 100017413
TESTE: *Lynn S. Mendibur* 9:25am
BY: *Rosa Progen* CLERK



NOTE: NORTHING AND EASTING COORDINATE VALUES AS SHOWN ARE FOR GIS PURPOSES ONLY!

2010 OCT 20 AM 9:26