

LOT AREA TABLE

AREA	SQ. FT.	ACRES	AREA	SQ. FT.	ACRES
1	3356	0.077	49	2188	0.050
2	2263	0.052	50	2188	0.050
3	2199	0.050	51	3118	0.072
4	2189	0.050	52	3024	0.069
5	3153	0.072	53	2099	0.048
6	3153	0.072	54	2099	0.048
7	2189	0.050	55	3024	0.069
8	2189	0.050	56	3024	0.069
9	2189	0.050	57	2099	0.048
10	2189	0.050	58	2099	0.048
11	3153	0.072	59	3039	0.070
12	3153	0.072	60	3024	0.069
13	2189	0.050	61	2099	0.048
14	2189	0.050	62	2100	0.048
15	2189	0.050	63	2954	0.068
16	2189	0.050	64	2774	0.064
17	3153	0.072	65	2104	0.048
18	3137	0.072	66	2104	0.048
19	2189	0.050	67	2171	0.050
20	2189	0.050	68	2104	0.048
21	2189	0.050	69	2902	0.067
22	2189	0.050	70	2987	0.069
23	3152	0.072	71	2214	0.051
24	3152	0.072	72	2158	0.050
25	2189	0.050	73	2194	0.050
26	2189	0.050	74	2159	0.050
27	2189	0.050	75	2900	0.067
28	3152	0.072	76	3033	0.070
29	3152	0.072	77	2188	0.050
30	2188	0.050	78	2188	0.050
31	2188	0.050	79	3153	0.072
32	2188	0.050	80	3152	0.072
33	3152	0.072	81	2188	0.050
34	2949	0.068	82	2188	0.050
35	2175	0.050	83	2188	0.050
36	2188	0.050	84	3264	0.075
37	2188	0.050	85	2878	0.066
38	2188	0.050	86	2042	0.047
39	3152	0.072	87	2042	0.047
40	3152	0.072	88	2109	0.048
41	2188	0.050	89	3045	0.070
42	2188	0.050	90	2773	0.064
43	3152	0.072	91	2038	0.047
44	3152	0.072	92	2038	0.047
45	2188	0.050	93	2980	0.068
46	2188	0.050	94	2978	0.068
47	3152	0.072	95	2124	0.049
48	3152	0.072	96	2176	0.050
			97	3156	0.072

TOTAL = 246,290 SQ.FT. OR 5.654 ACRES

LEGEND

- DENOTES CONCRETE MONUMENT SET
- DENOTES IRON ROD SET
- - - - DENOTES EASEMENT LINE
- — — — DENOTES BOUNDARY LINE
- — — — DENOTES LOT LINE

SUBDIVISION OF BURGESSES QUARTERS

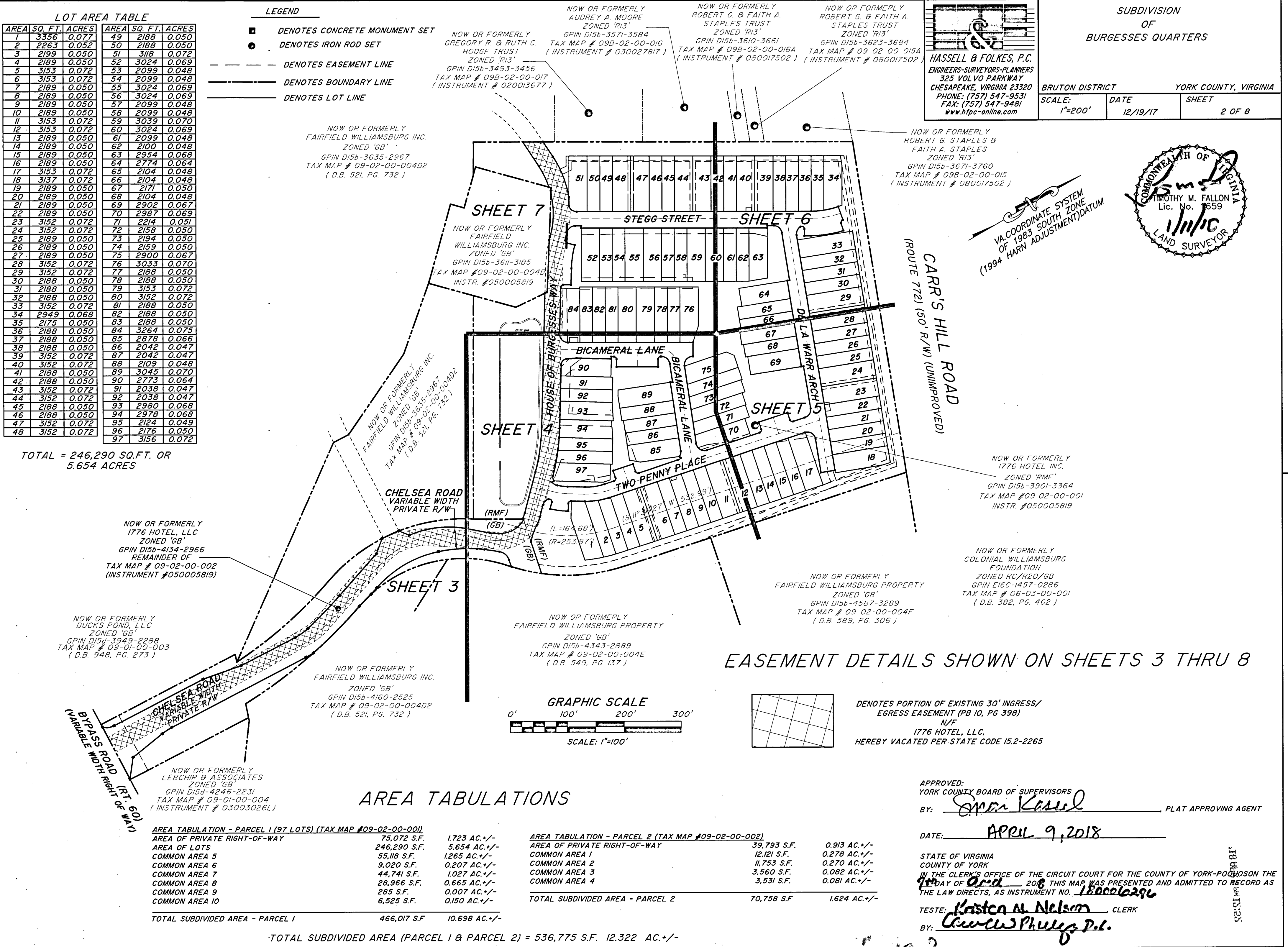
BRUTON DISTRICT YORK COUNTY, VIRGINIA

SCALE: 1"=200' DATE: 12/19/17 SHEET: 2 OF 8

**HASSELL & FOLKES, P.C.**  
 ENGINEERS-SURVEYORS-PLANNERS  
 325 VOLVO PARKWAY  
 CHESAPEAKE, VIRGINIA 23320  
 PHONE: (757) 547-9531  
 FAX: (757) 547-9481  
 www.hfpc-online.com

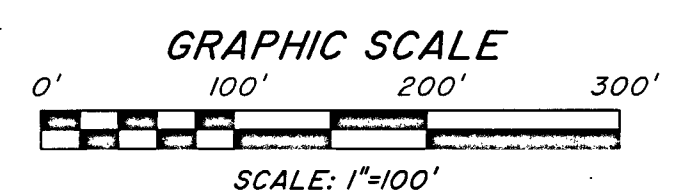


VA COORDINATE SYSTEM OF 1983 SOUTH ZONE (1994 HARN ADJUSTMENT) DATUM



AREA TABULATIONS

AREA TABULATION - PARCEL 1 (97 LOTS) (TAX MAP #09-02-00-001)		AREA TABULATION - PARCEL 2 (TAX MAP #09-02-00-002)	
AREA OF PRIVATE RIGHT-OF-WAY	75,072 S.F.	1.723 AC. +/-	39,793 S.F.
AREA OF LOTS	246,290 S.F.	5.654 AC. +/-	12,121 S.F.
COMMON AREA 5	55,118 S.F.	1.265 AC. +/-	11,753 S.F.
COMMON AREA 6	9,020 S.F.	0.207 AC. +/-	3,560 S.F.
COMMON AREA 7	44,741 S.F.	1.027 AC. +/-	3,531 S.F.
COMMON AREA 8	28,966 S.F.	0.665 AC. +/-	
COMMON AREA 9	285 S.F.	0.007 AC. +/-	
COMMON AREA 10	6,525 S.F.	0.150 AC. +/-	
<b>TOTAL SUBDIVIDED AREA - PARCEL 1</b>	<b>466,017 S.F.</b>	<b>10.698 AC. +/-</b>	<b>70,758 S.F.</b>
<b>TOTAL SUBDIVIDED AREA (PARCEL 1 &amp; PARCEL 2) = 536,775 S.F. 12.322 AC. +/-</b>			



EASEMENT DETAILS SHOWN ON SHEETS 3 THRU 8

DENOTES PORTION OF EXISTING 30' INGRESS/EGRESS EASEMENT (PB 10, PG 398) N/F 1776 HOTEL, LLC, HEREBY VACATED PER STATE CODE 15.2-2265

APPROVED: YORK COUNTY BOARD OF SUPERVISORS  
 BY: Spencer Kasel PLAT APPROVING AGENT

DATE: APRIL 9, 2018

STATE OF VIRGINIA COUNTY OF YORK  
 IN THE CLERK'S OFFICE OF THE CIRCUIT COURT FOR THE COUNTY OF YORK-POLK  
 THIS MAP WAS PRESENTED AND ADMITTED TO RECORD AS THE LAW DIRECTS, AS INSTRUMENT NO. 180006296

TESTE: Kristen M. Nelson CLERK  
 BY: Cawley Phelps P.C.