

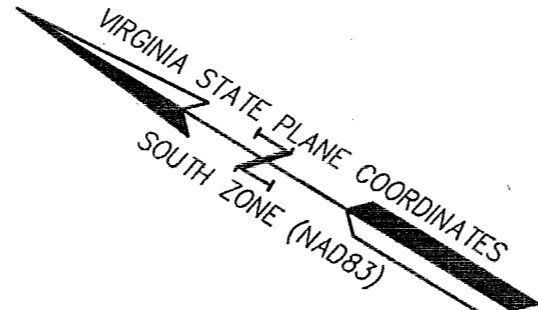
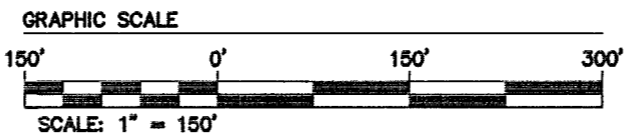
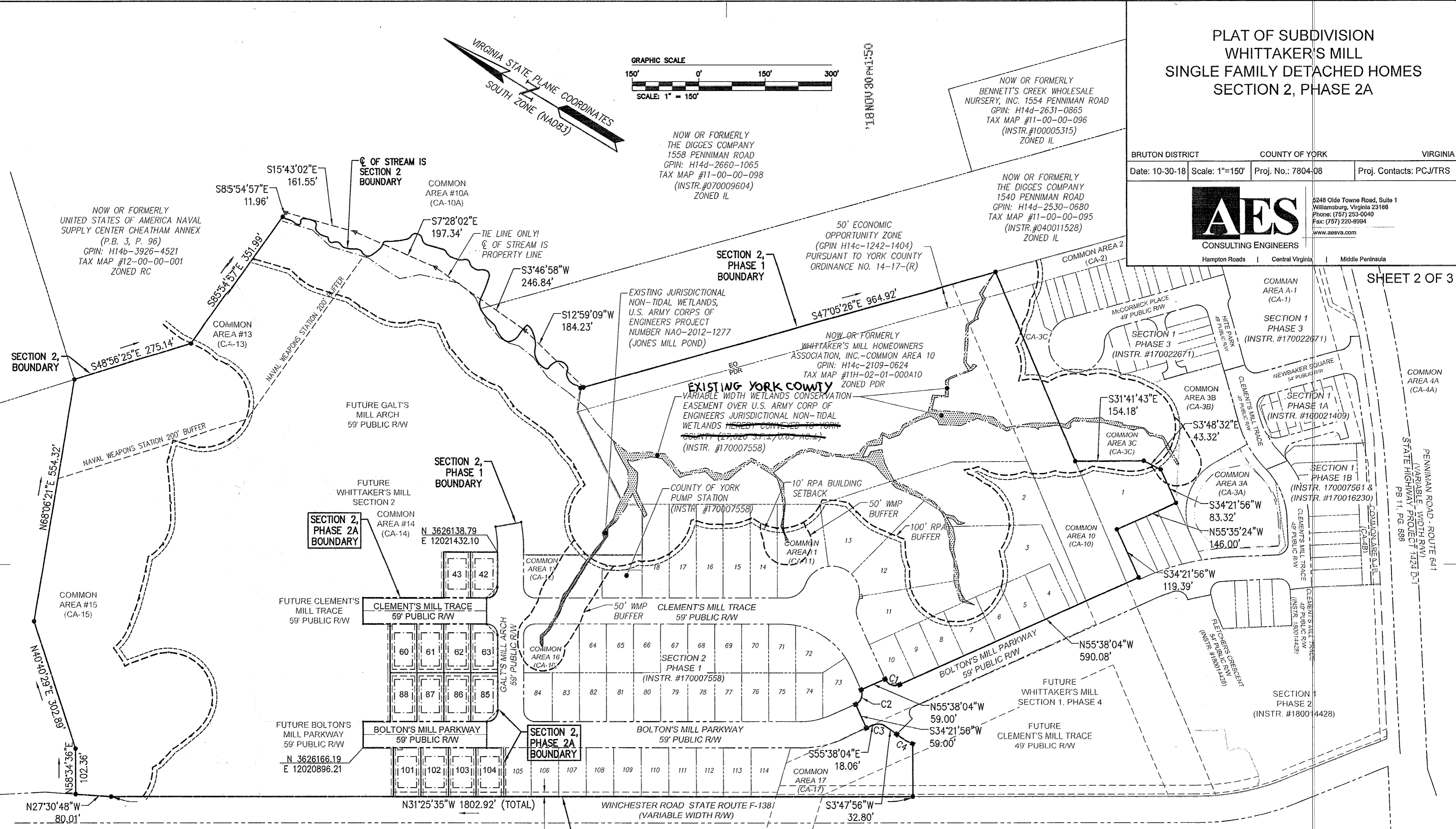
PLAT OF SUBDIVISION
WHITTAKER'S MILL
SINGLE FAMILY DETACHED HOMES
SECTION 2, PHASE 2A

BRUTON DISTRICT COUNTY OF YORK VIRGINIA
Date: 10-30-18 Scale: 1"=150' Proj. No.: 7804-08 Proj. Contacts: PCJ/TRS

AES
CONSULTING ENGINEERS
Hampton Roads | Central Virginia | Middle Peninsula

5248 Olde Towne Road, Suite 1
Williamsburg, Virginia 23188
Phone: (757) 253-0040
Fax: (757) 220-8994
www.aesva.com

SHEET 2 OF 3

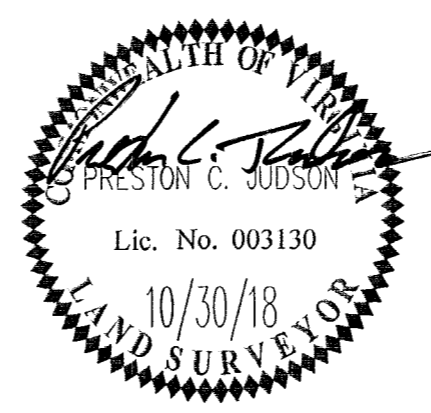


CURVE TABLE

CURVE #	DELTA	RADIUS	LENGTH	TANGENT	CHORD	CHORD BEARING
C1	90°00'00"	25.00'	39.27'	25.00'	35.36'	N10°38'04"W
C2	90°00'00"	25.00'	39.27'	25.00'	35.36'	S79°21'56"W
C3	59°26'00"	25.00'	25.93'	14.27'	24.79'	S25°55'04"E
C4	10°46'11"	224.50'	42.20'	21.16'	42.14'	S1°35'10"E

LEGEND

- PROPERTY LINE
- RIGHT-OF-WAY LINE
- BUILDING SETBACK LINE
- PRIVATE UTILITY EASEMENT
- DRAINAGE OR UTILITY EASEMENT
- SIGHT EASEMENT
- MF MONUMENT FOUND
- MONUMENT SET (PER SECTION 2, PHASE 1 PLAT)
- MONUMENT SET
- IRON ROD SET
- RPA RESOURCE PROTECTION AREA
- WMP WATERSHED MANAGEMENT AND PROTECTION AREA



APPROVED:
YORK COUNTY BOARD OF SUPERVISORS
BY: Sharon Kassel PLAT APPROVING AGENT
DATE: NOVEMBER 27, 2018

STATE OF VIRGINIA
COUNTY OF YORK
IN THE CLERK'S OFFICE OF THE CIRCUIT COURT FOR THE COUNTY
OF YORK-POQUOSON THE 30 DAY OF November, 2018.
THIS MAP WAS PRESENTED AND ADMITTED TO RECORD AS THE LAW
DIRECTS, AS INSTRUMENT NO. 180021780
TESTE: KRISTEN N. NELSON, CLERK CLERK
BY: Craig Stone P.C.