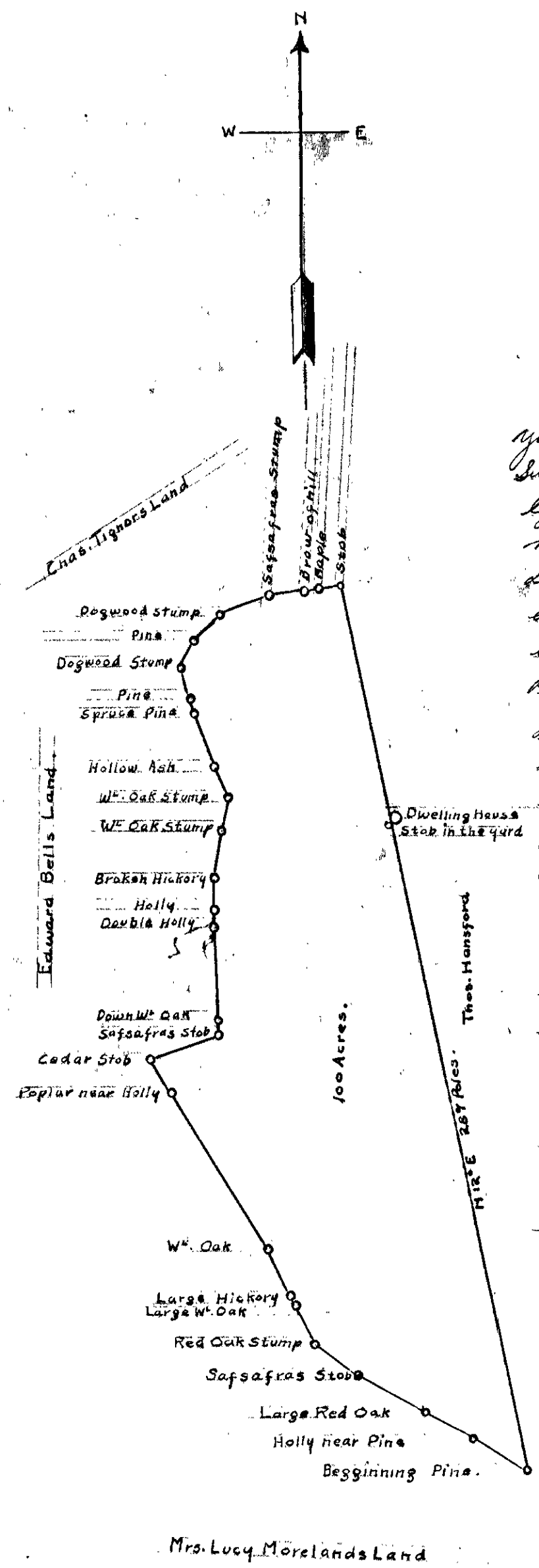


THIS PLAT IS A COPY
Original has been transmitted
Reserve Plat Book No. 1



York County 22nd Aug. 1853. At the request of Thos. Hansford I made the following Survey of a tract of land it being a part of the Tract commonly known as Tabbs lying in the County aforesaid on the head of Chermans Creek. Said Hansford directed me to measure and lay off One hundred acres beginning at a certain pine on Mrs. Lucy Morelands line and running along the westward boundary of said tract for enough to cut off the said one hundred acres. In accordance with said direction with Edw. C. Bell and Thos. C. Amory sworn chain carriers I commenced at said Pine and ran thence along Mrs. Morelands line N 57 1/4 W 19.96 ps. to a Holly near a pine and thence N 63 1/4 W 16.82 ps. to a large Red Oak, N 61 1/4 W 24 ps. to a Sassafras Stob, N 52 W 17.52 ps. to a Red Oak Stump, N 26 1/2 W 15.12 ps. to a large W Oak on Thomas Crocketts line, thence by said Crocketts line N 26 N 2 ps. to a large Hickory, N 25 1/2 W 16 ps. to a W Oak, N 52 1/4 W 59.30 ps. to a Poplar near a Holly, N 24 W 12.28 ps. to a Cedar Stob now made a corner of this and Crocketts on Edward Bells line on the side of a Cart Road, thence by said Bells line N 70 1/2 E 22 ps. to another Cedar Stob now made a corner. Still on Bells line N 4 1/2 W 4.24 ps. to a down W Oak, N 37 W 22.84 ps. to a double Holly, N 3 1/2 E 6.40 ps. to a Holly, N 1 1/2 W 10 ps. to a broken Hickory, N 9 E 15.28 ps. to W Oak Stump, N 10 1/4 E 10.52 ps. to W Oak Stump, N 24 1/2 W 10.56 ps. to a Hollow Oak on a Cart Road in a branch, N 21 1/2 W 17.84 ps. to a Spruce pine, N 16 W 4.60 ps. to a Pine, same course 7.76 ps. to a Dogwood Stump, N 24 E 9.36 ps. to a Pine in place of a Dogwood on Chas. Tignoss line, thence by said Tignoss line N 45 1/2 E 11.12 ps. to a Dogwood Stump, N 29 1/2 E 16.72 ps. to a Sassafras Stump, N 81 1/4 E 11.12 ps. to the brow of a hill, N 88 1/4 E 4.60 ps. to a Maple on the centre of a branch, N 78 E 6.76 ps. to a stob now made a corner between Thos. Hansford and the piece thus cut off, thence by a line of new marked trees 2.91 ps. to the beginning Pine the bearing of which land is S. 15° E containing One Hundred Acres be the same more or less. Platted and calculated on a Scale of 70 ps to an Inch

Chubbard J.C.C.

A copy for T. Hansford

Ch.
The following are the line trees and other marks on the section line commencing at the beginning Pine on Mrs. Morelands line thence N 12 W 20.16 ps to a small Blk. Walnut, 2.20 ps to a large Blk. Walnut, 16.56 ps to a Red Oak, 7.32 ps to a Pine, 5.12 ps to a Hickory, 4.44 ps to a Pine 3.60 ps. Pine, 3.48 ps to a Pine 40.28 ps to a Pine, 27.52 ps to a stake in edge of the Old Field, 41 ps to a stake at the fence, 36.20 ps to a stake in the yard between the house and the kitchen, 11.52 ps to a stake in the Corn field, 11.68 ps to a stake in Corn field, 12.72 ps to a stake in edge of field, 5.04 ps to a Spruce Pine on the edge of the hill 7.24 ps to a stake on the line in the branch.