

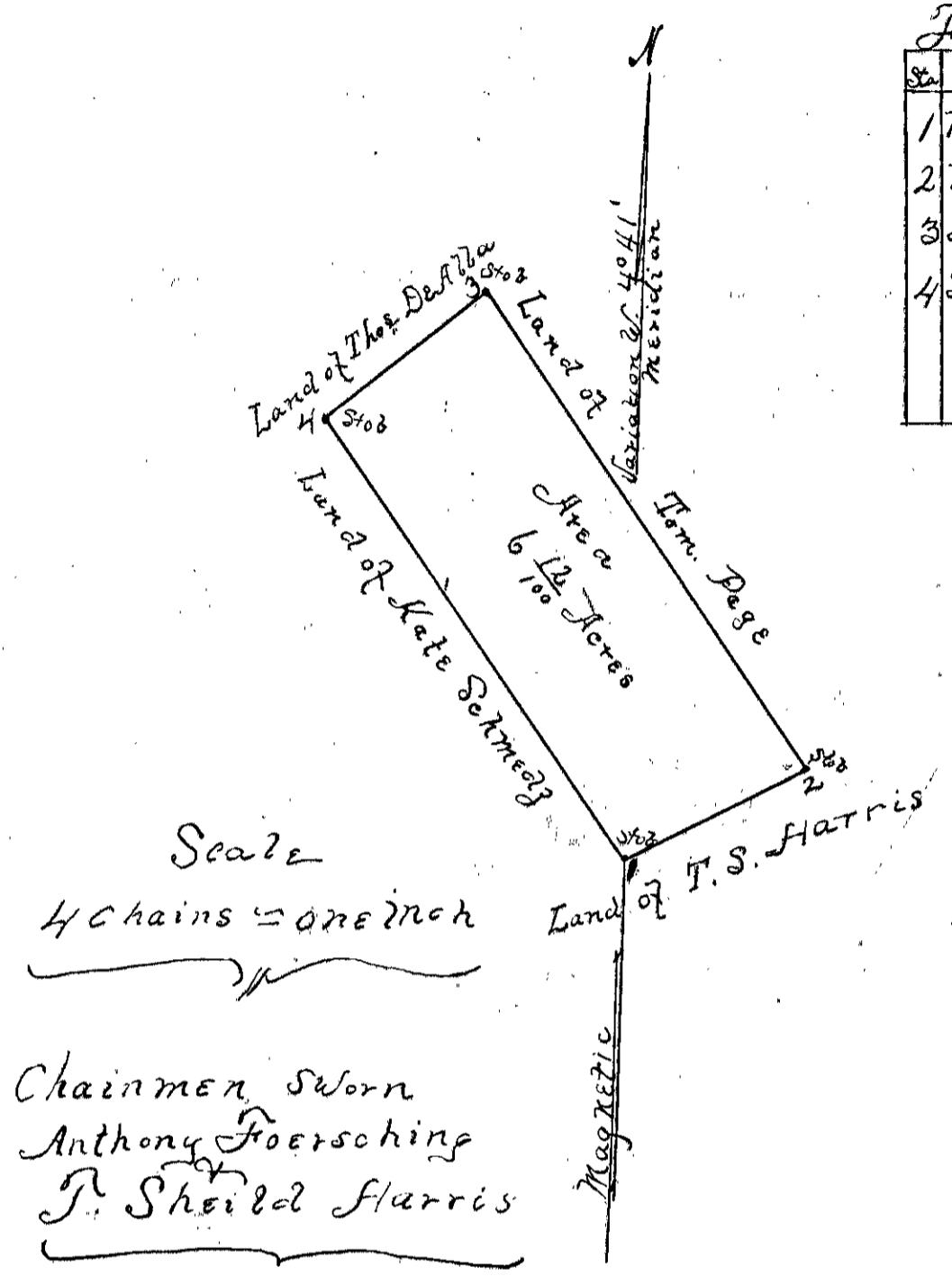
A Rough Sketch
of the Goodwin Tract
Taken from old Plat
Contant 180. acres.
Scale 20 Poles

1909. Nov. 10th
filed.
T. J. Hedgins,
Clerk

THIS PLAT IS A COPY
Original has been transferred to
Reserve Plat Book No. 1
B

Field Notes

No.	Bear.	Dist.	Rem.
1	N 62 1/2 E	4.80	
2	N 36 W	13.39	
3	S 34 1/2 W	4.80	
4	S 36 E	12.31	



Scale
4 chains = one inch
Chainmen Sworn
Anthony Hoersching
T. Sheld Harris

A Plat of a small tract of Woodland, situate in Grafton District, County of York, State of Virginia - Located and surveyed for Mary S. Harris by virtue of Land Office Treasury Warrant No. 31,150, issued to the said Mary S. Harris by the Register of the Land Office, on the 16th day of August 1909. Located and surveyed by Sydney Smith, Surveyor for York County, Virginia on the 21st day of September 1909, pursuant to notice in writing to the said locator, Mary S. Harris.
Given under my hand and at my office in Yorktown this 27th day of September 1909.
Sydney Smith, Surveyor for York County

24 A

THIS PLAT IS A COPY
Original has been transferred to
Reserve Plat Book No. 1
A