

J. B. SINCLAIR, JR.
CIVIL ENGINEER
HAMPTON, VIRGINIA

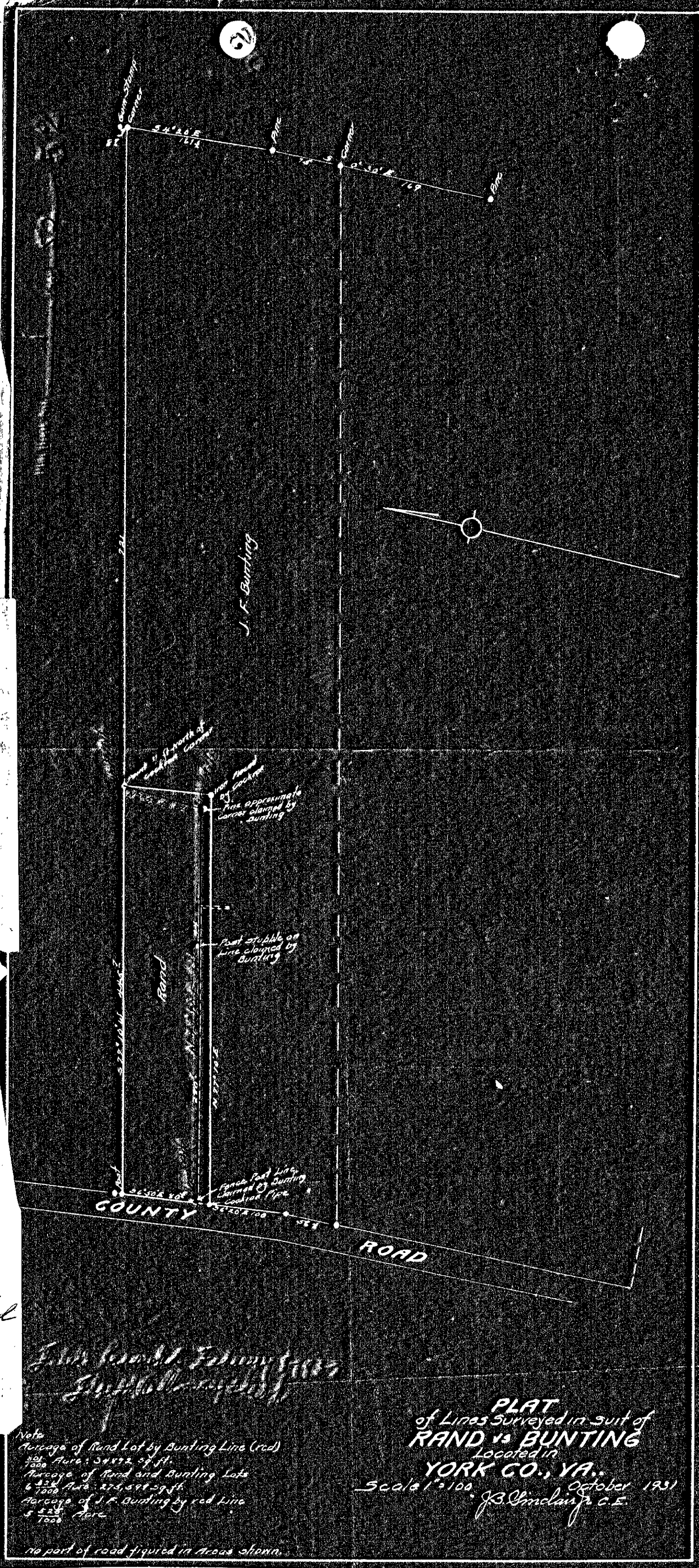
February 6, 1933

Honorable Frank Armistead,
Judge of the Circuit Court,
Yorktown, Va.

Dear Sir:

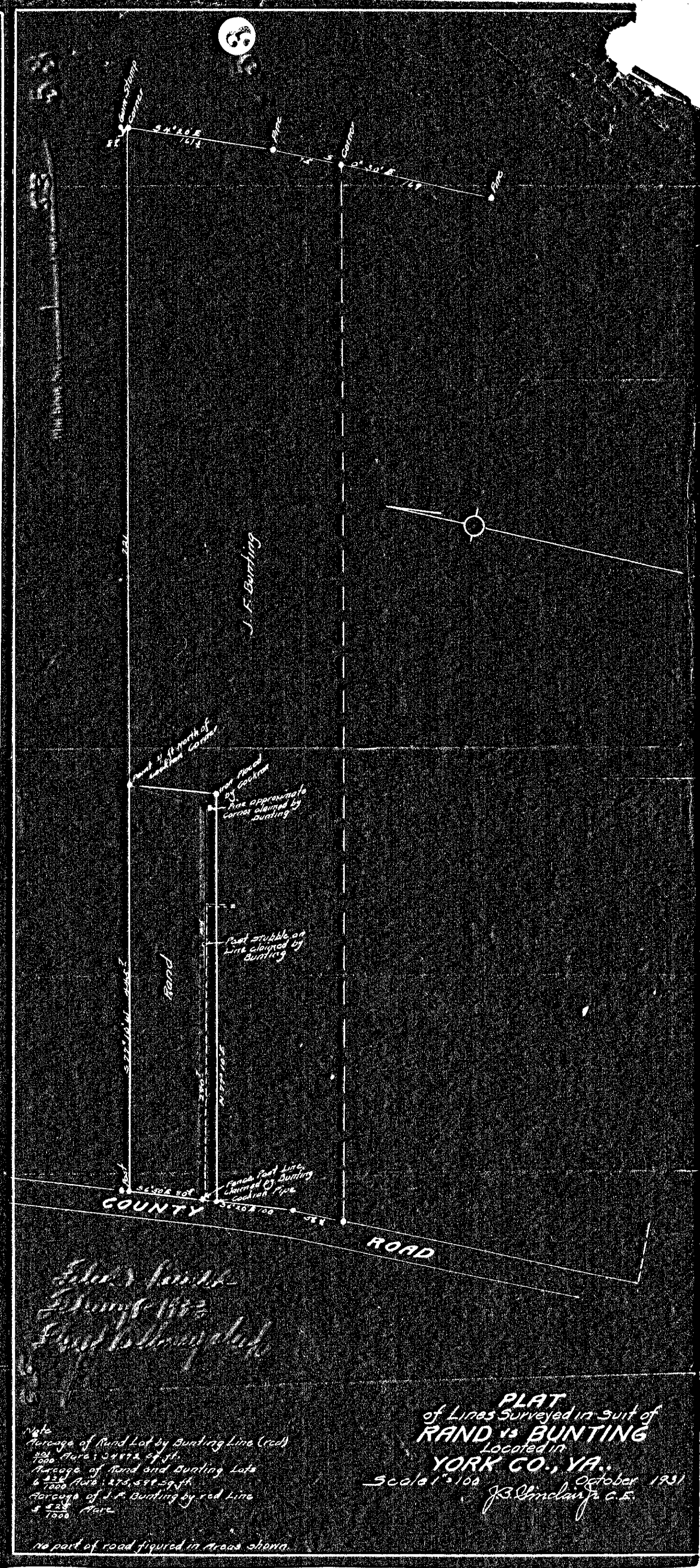
I have this day surveyed the lines and placed markers on the ground, in the suit of *Rand vs Bunting*, as shown in red on the map filed in the papers of that suit. The line shown in red, is not parallel to the south line as claimed by *Rand*, but the jury evidently thought it was when they used the bearing of that line in their verdict. To use that bearing, N 77° 10' E, would make the line go through a house owned by *Mr. Rand*, when I had testified that it would not go through the body of the house. Believing that the jury intended to be guided by the post at the front, and post stubble on the line, I have surveyed it accordingly, showing bearings and distances with the lines as shown in red.

Filed February 6-1933
J. B. Sinclair, Jr.
J. B. Sinclair, Jr.
J. B. Sinclair, Jr.



Note
Area of Rand Lot by Bunting Line (red)
200 Acres: 34,172 sq. ft.
Area of Rand and Bunting Lots
6 7/8 Acres: 274,577 sq. ft.
Area of J. F. Bunting by red Line
4 2/3 Acres
no part of road figured in areas shown.

PLAT
of Lines Surveyed in suit of
RAND vs BUNTING
Located in
YORK CO., VA.
Scale 1"=100' October 1931
J. B. Sinclair, Jr. C.E.



Note
Area of Rand Lot by Bunting Line (red)
200 Acres: 34,172 sq. ft.
Area of Rand and Bunting Lots
6 7/8 Acres: 274,577 sq. ft.
Area of J. F. Bunting by red Line
4 2/3 Acres
no part of road figured in areas shown.

PLAT
of Lines Surveyed in suit of
RAND vs BUNTING
Located in
YORK CO., VA.
Scale 1"=100' October 1931
J. B. Sinclair, Jr. C.E.