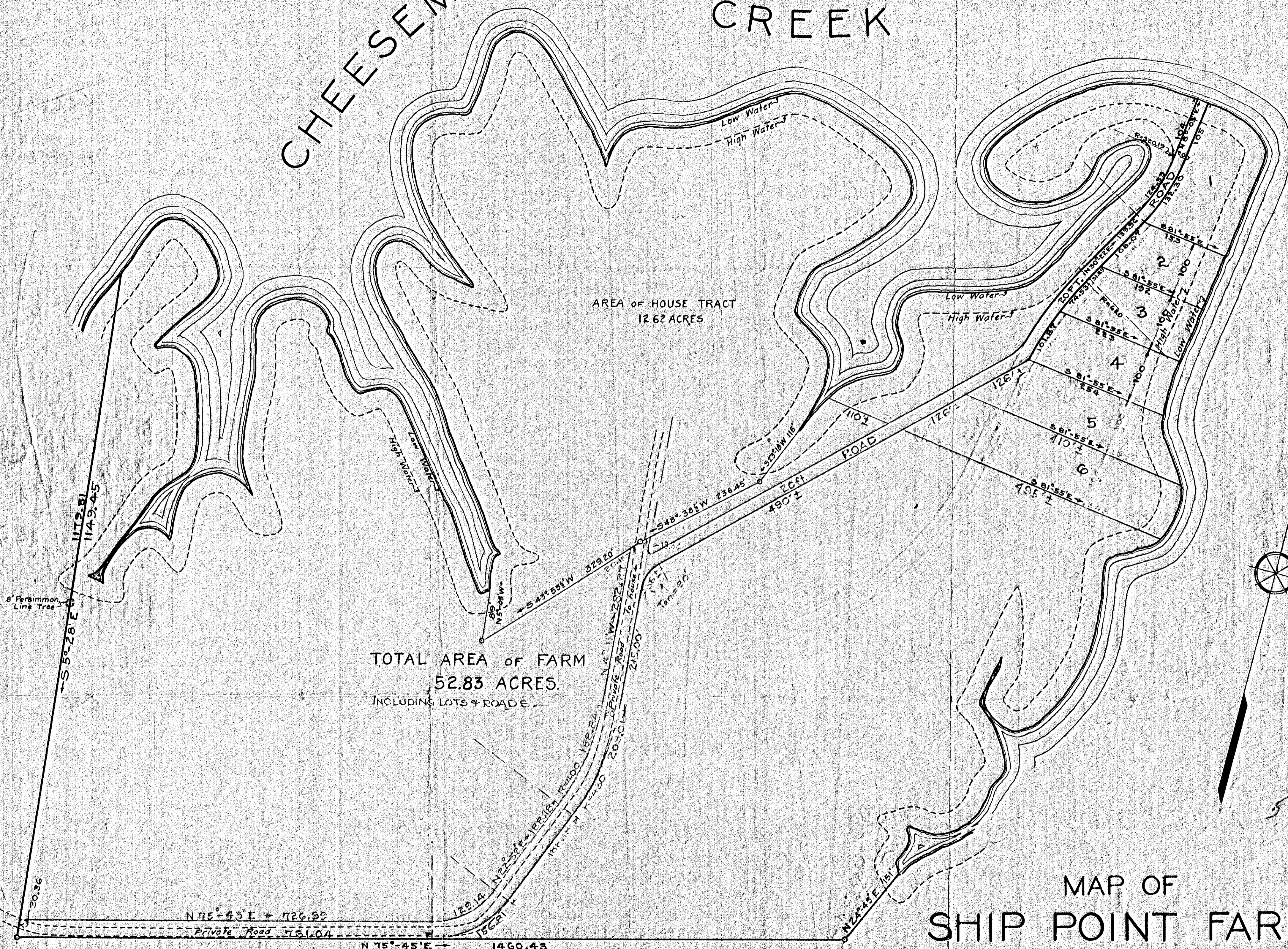


# CHEESEMAN'S CREEK



MAP OF  
**SHIP POINT FARM**  
 MARSHALL G. MUNCE AND L.R. O'HARA  
 OWNERS  
 SITUATED WEST OF POQUOSON RIVER AND ABUTTING  
 ON CHEESEMAN'S CREEK, YORK COUNTY, VA.  
 Scale 1"=100'

*Plotted and recorded by J. Temple Waddill  
 J. Temple Waddill*

J. Temple Waddill  
 Certified Civil Engineer  
 RICHMOND, VA.

F.R.M.-68.  
 Book 68, pp 3-11.

