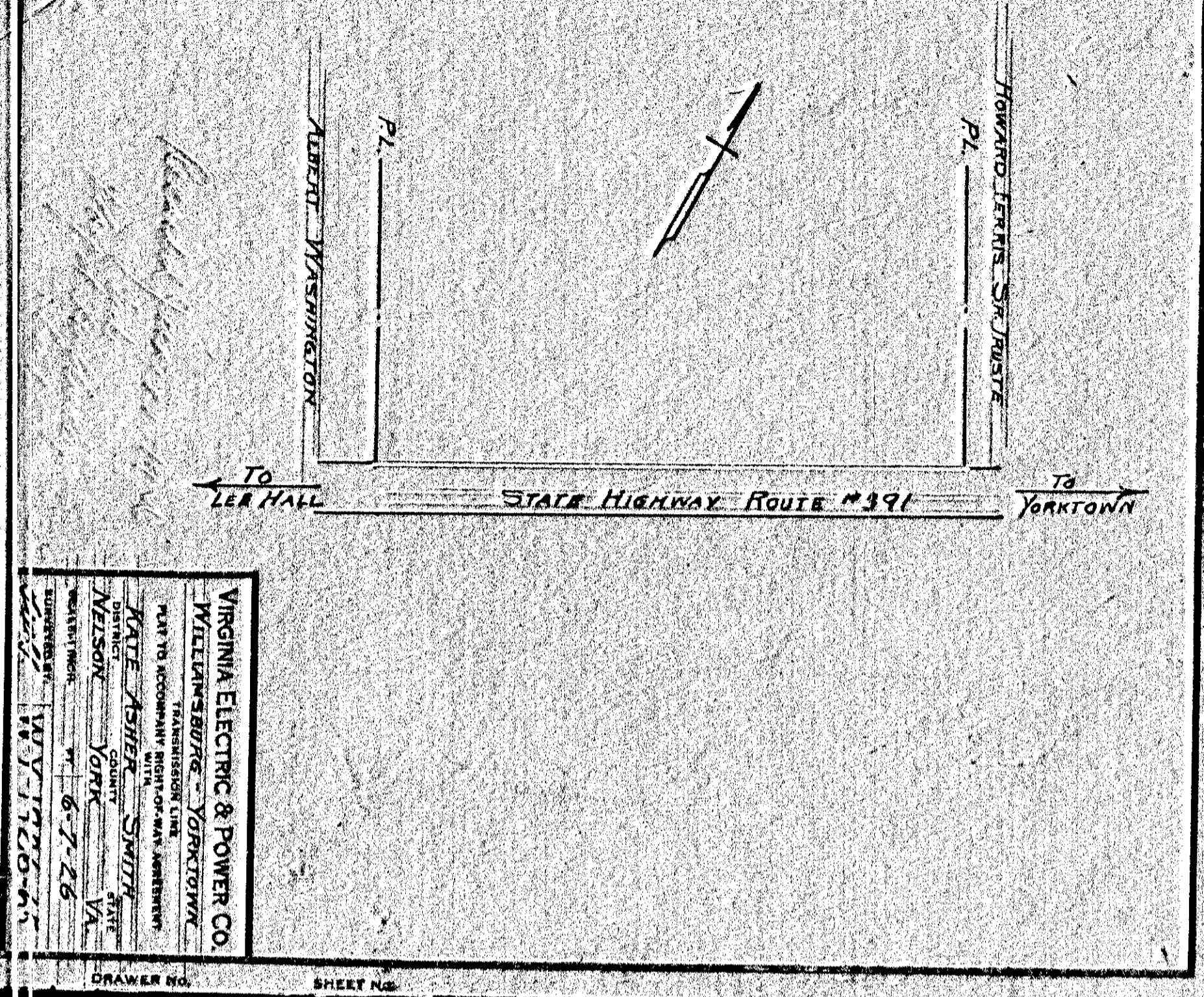


VIRGINIA ELECTRIC & POWER CO.  
 WILLIAMSBURG - YORKTOWN  
 TRANSMISSION LINE  
 PLAT TO ACCOMPANY RIGHT-OF-WAY AGREEMENT  
 DRAWN BY: *[Signature]*  
 CHECKED BY: *[Signature]*  
 DATE: JUL. 24, 1926  
 SCALE: 1" = 100' FT.  
 SURVEYED BY: T.W.G.  
 YD-1926-1165

DRAWER No. SHEET No.

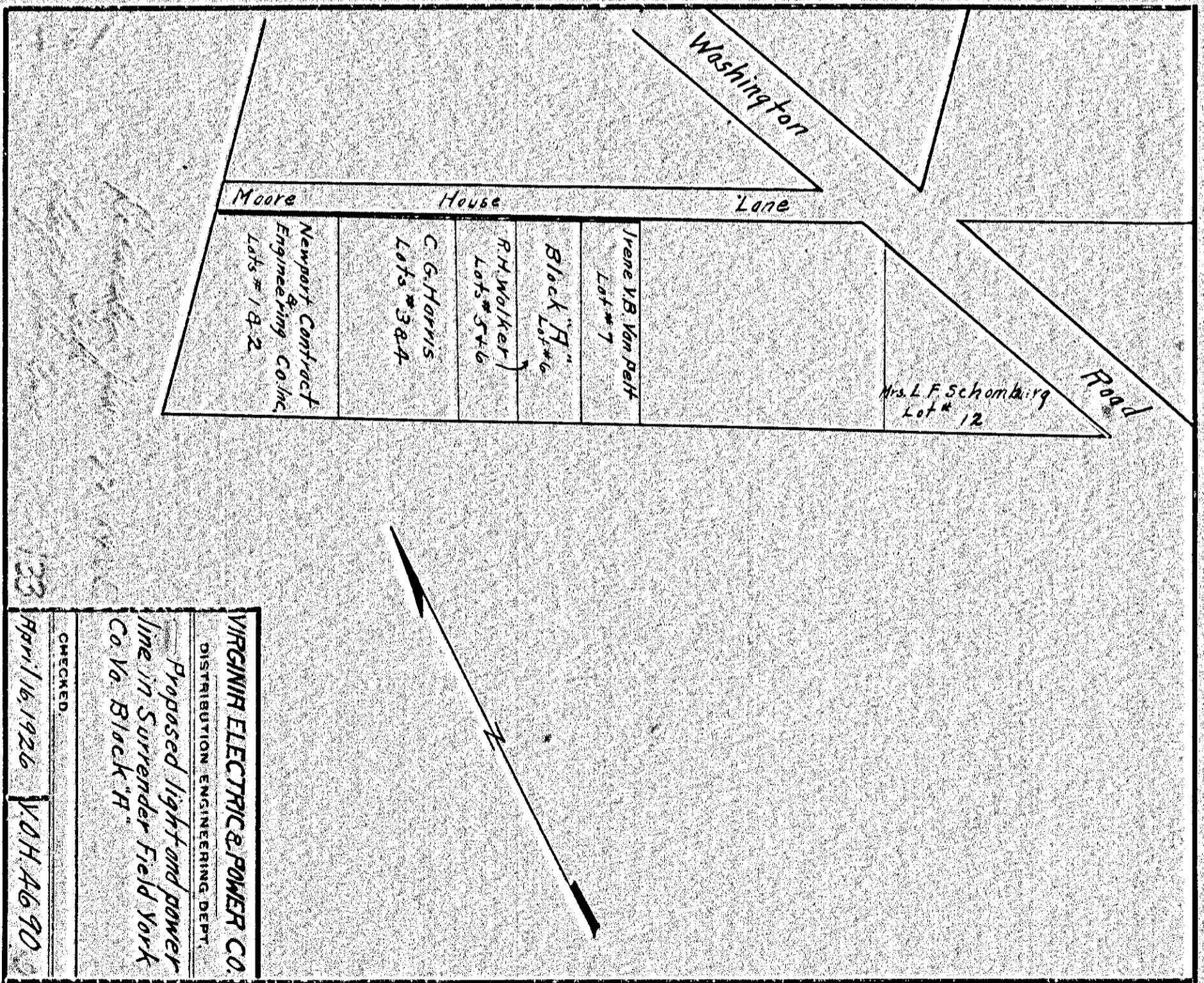
132

134



VIRGINIA ELECTRIC & POWER CO.  
 WILLIAMSBURG - YORKTOWN  
 TRANSMISSION LINE  
 PLAT TO ACCOMPANY RIGHT-OF-WAY AGREEMENT  
 DRAWN BY: *[Signature]*  
 CHECKED BY: *[Signature]*  
 DATE: MAY 17, 1926  
 SURVEYED BY: T.W.G.  
 YD-1926-65

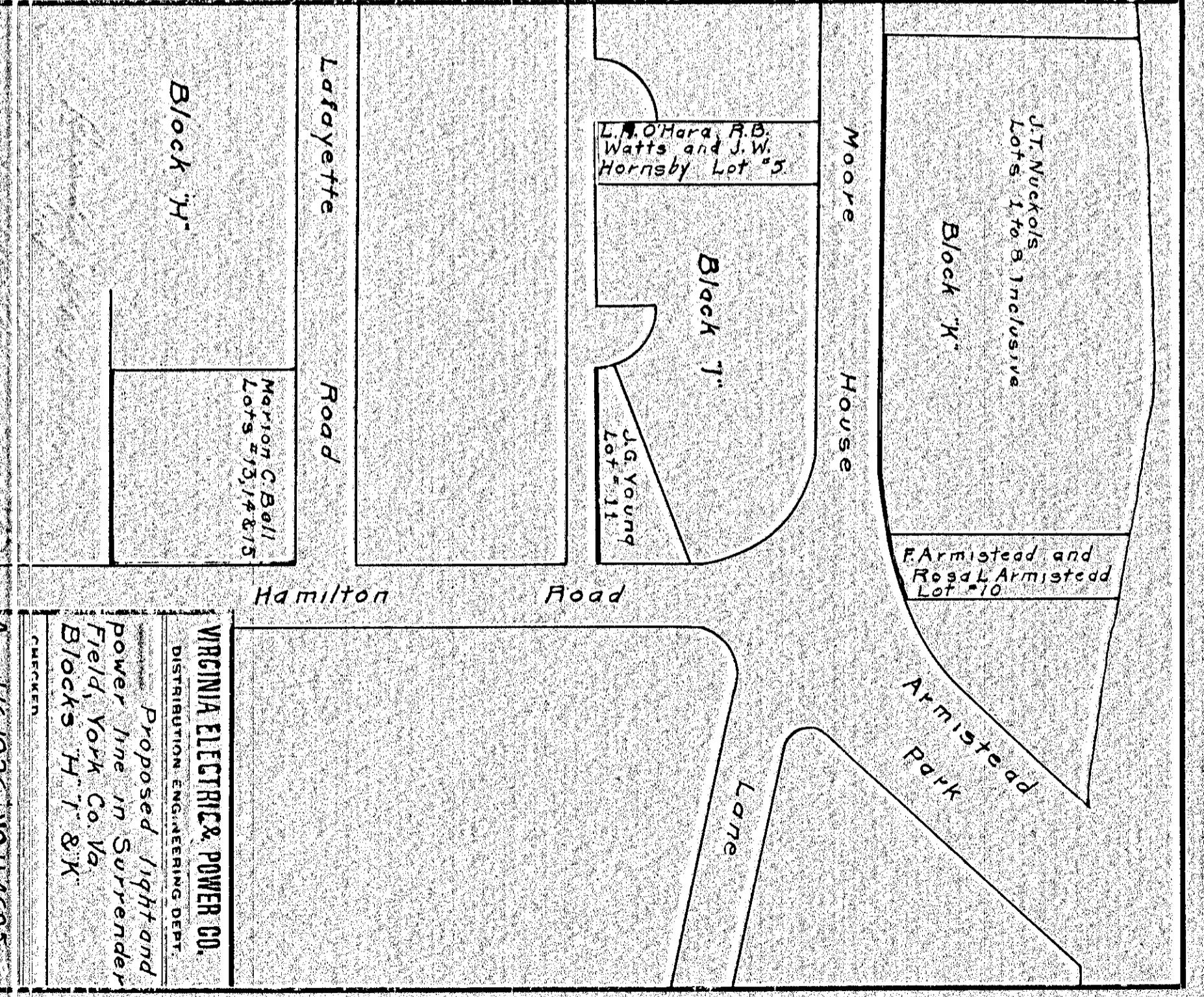
DRAWER No. SHEET No.



VIRGINIA ELECTRIC & POWER CO.  
 DISTRIBUTION ENGINEERING DEPT.  
 Proposed light and power  
 line in Surrender Field York  
 Co. Va. Block "H"  
 CHECKED: *[Signature]*  
 DATE: April 16, 1926  
 V.A.H. A690

133

135



VIRGINIA ELECTRIC & POWER CO.  
 DISTRIBUTION ENGINEERING DEPT.  
 Proposed light and  
 power line in Surrender  
 Field, York Co. Va.  
 Blocks "H", "I", & "K"  
 CHECKED: *[Signature]*  
 DATE: April 16, 1926  
 V.O.H. A695

DRAWER No. SHEET No.