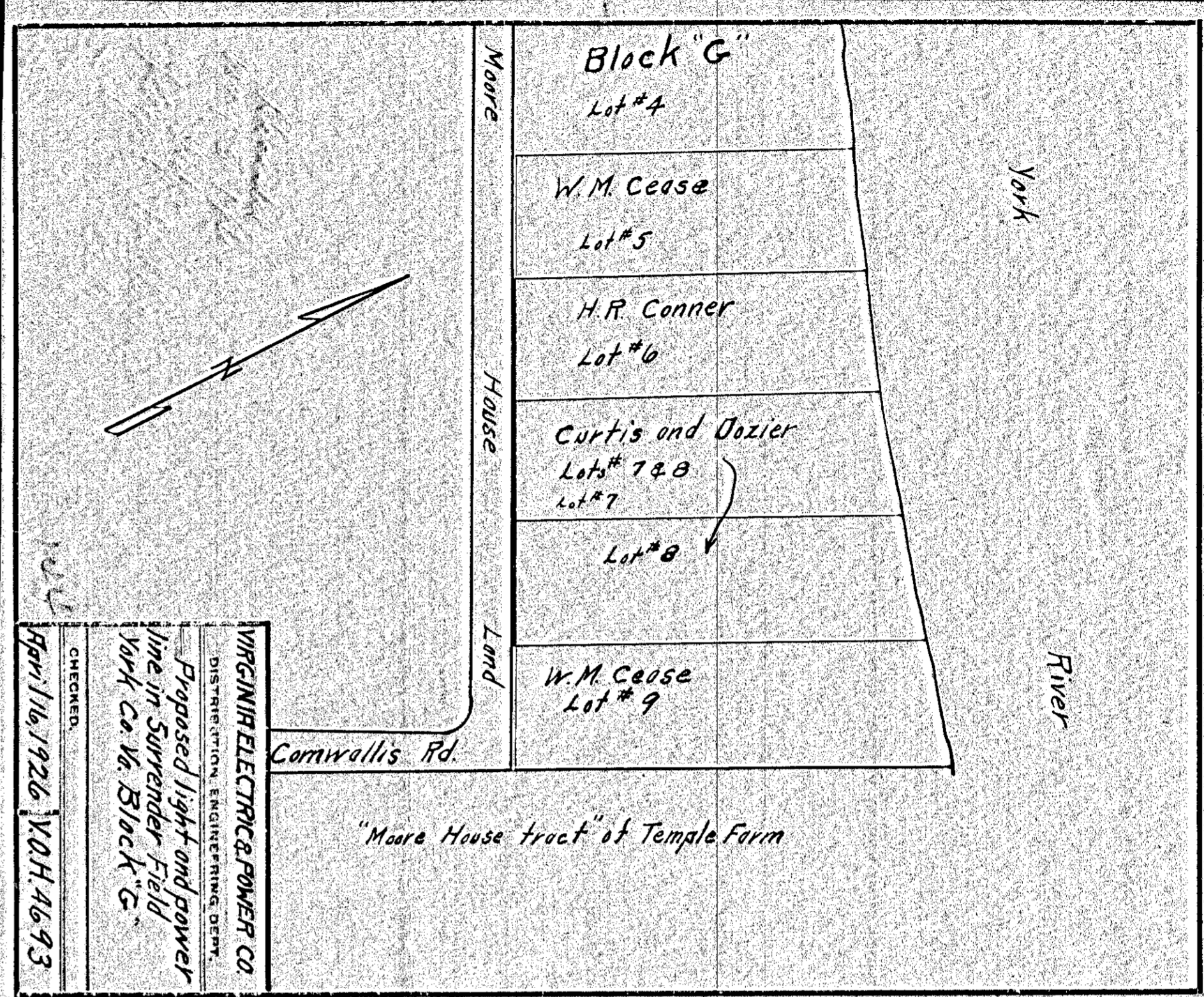


VIRGINIA ELECTRIC & POWER CO.
 DISTRIBUTION ENGINEERING DEPT.
 Proposed light and power
 line in Surrender Field,
 York Co. Va. Block "G".
 CHECKED: [Signature]
 Apr 16, 1926 VOH 4692

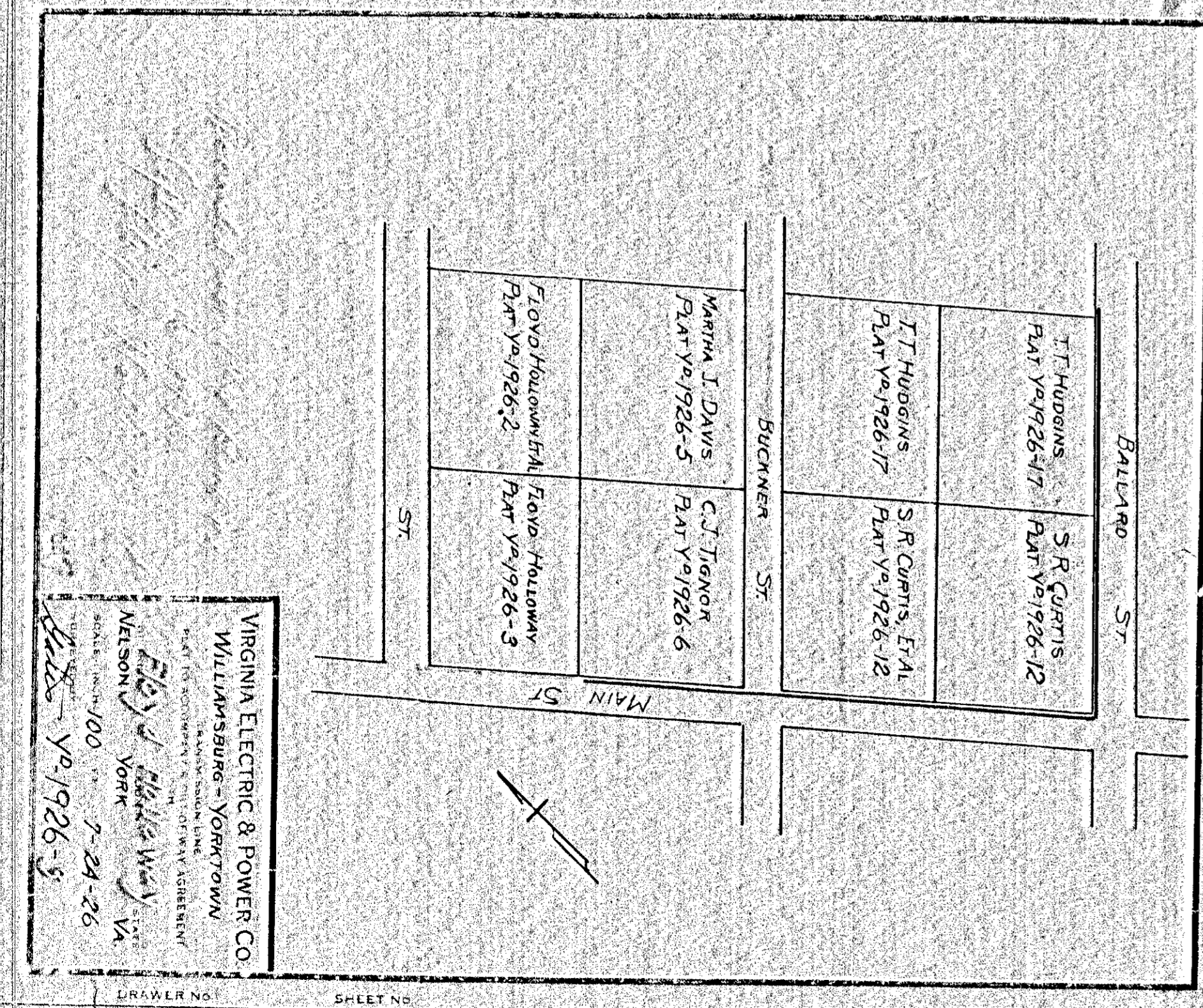
146



VIRGINIA ELECTRIC & POWER CO.
 DISTRIBUTION ENGINEERING DEPT.
 Proposed light and power
 line in Surrender Field,
 York Co. Va. Block "G".
 CHECKED: [Signature]
 Apr 16, 1926 VOH 4693

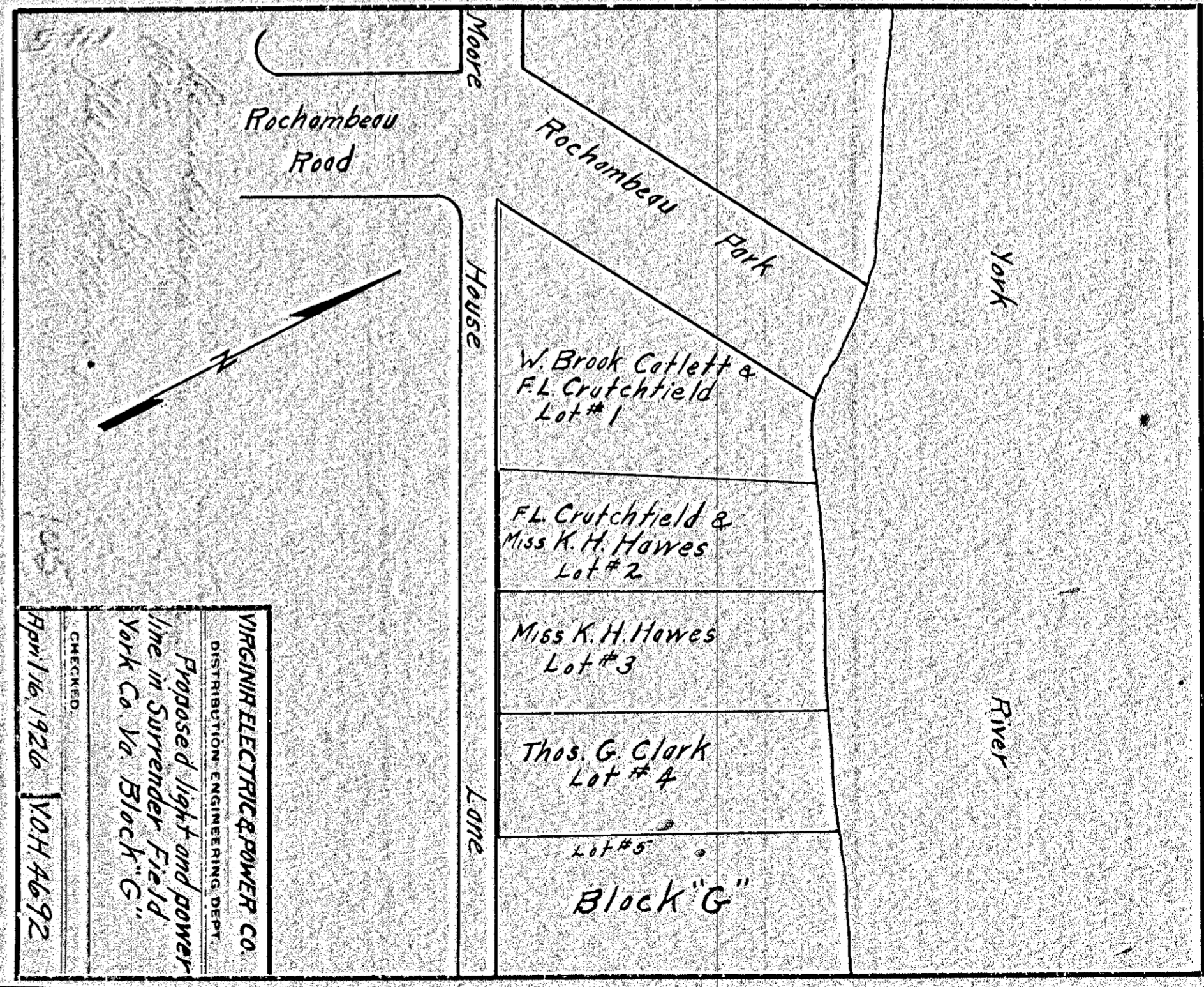
"Moore House tract" of Temple Farm

144



VIRGINIA ELECTRIC & POWER CO.
 WILLIAMSBURG - YORKTOWN
 SCALE: 1" = 100'
 APR 16, 1926
 CHECKED: [Signature]
 VOH 4692

147



VIRGINIA ELECTRIC & POWER CO.
 DISTRIBUTION ENGINEERING DEPT.
 Proposed light and power
 line in Surrender Field,
 York Co. Va. Block "G".
 CHECKED: [Signature]
 Apr 16, 1926 VOH 4692

145