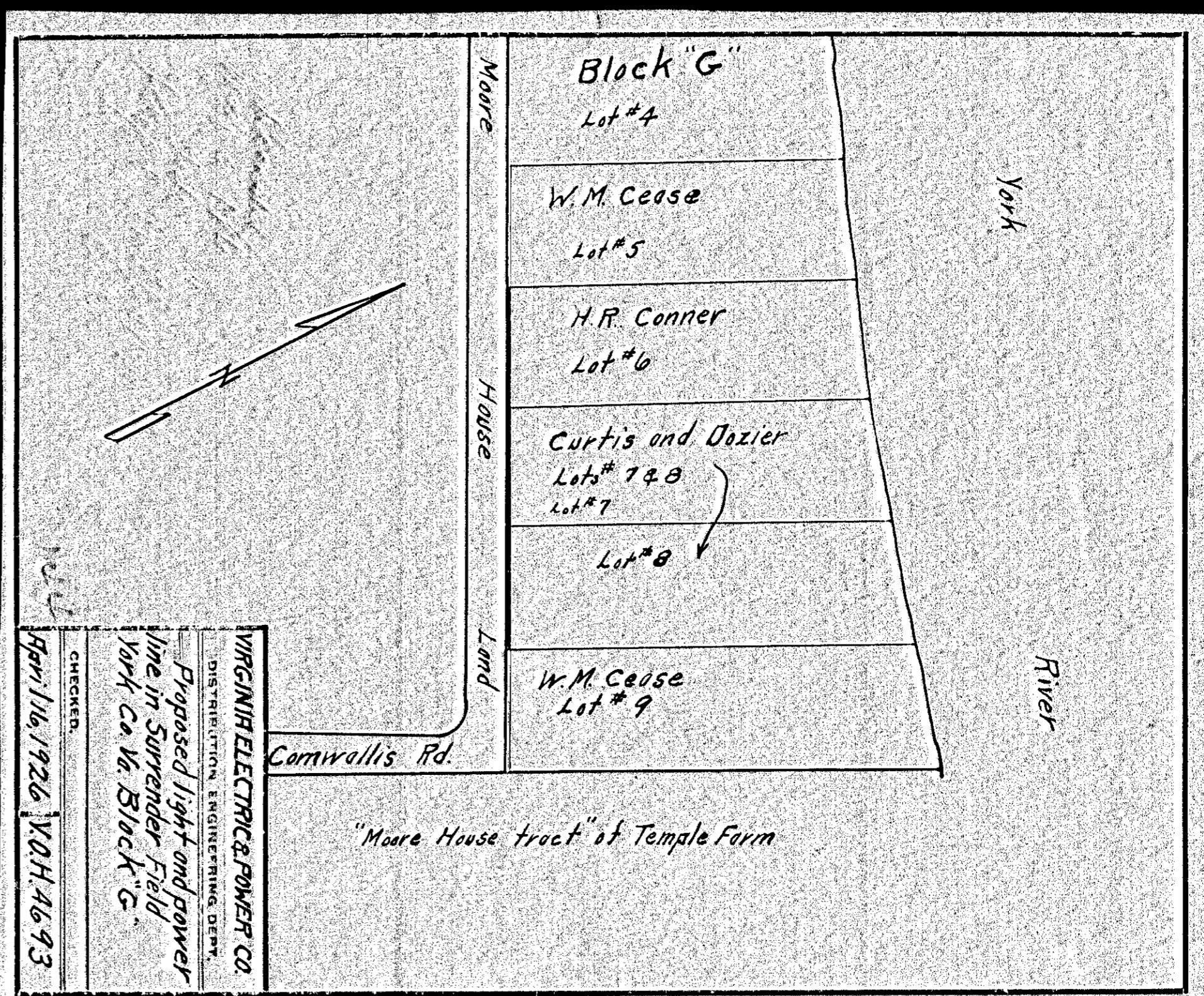


VIRGINIA ELECTRIC & POWER CO.
 DISTRIBUTION ENGINEERING DEPT.
 Proposed light and power
 line in Surrender Field,
 York Co. Va. Block "G".
 Checked: [Signature]
 Date: April 16, 1926. V.O.H. 46,92.

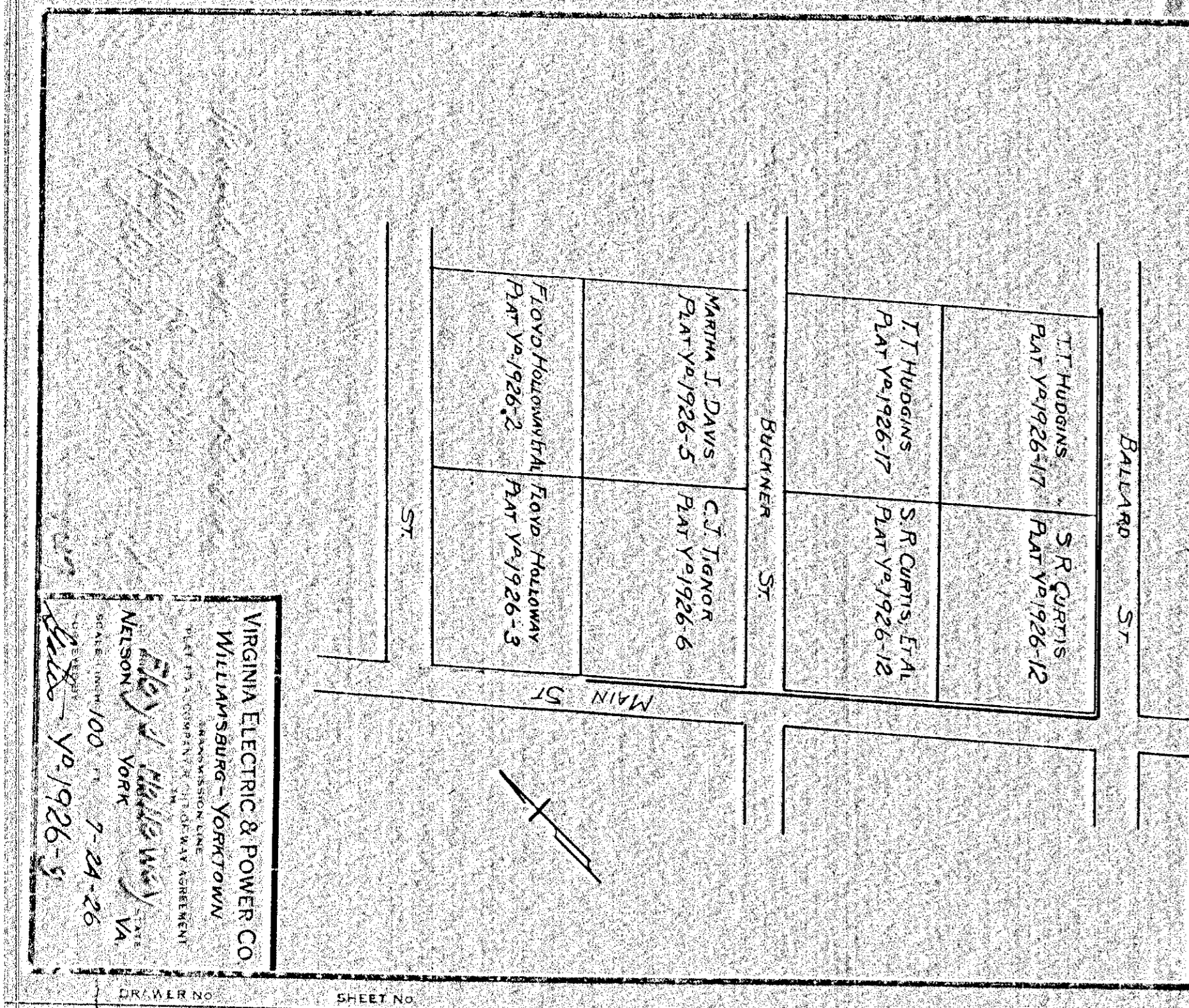
146



VIRGINIA ELECTRIC & POWER CO.
 DISTRIBUTION ENGINEERING DEPT.
 Proposed light and power
 line in Surrender Field,
 York Co. Va. Block "G".
 Checked: [Signature]
 Date: April 16, 1926. V.O.H. 46,93.

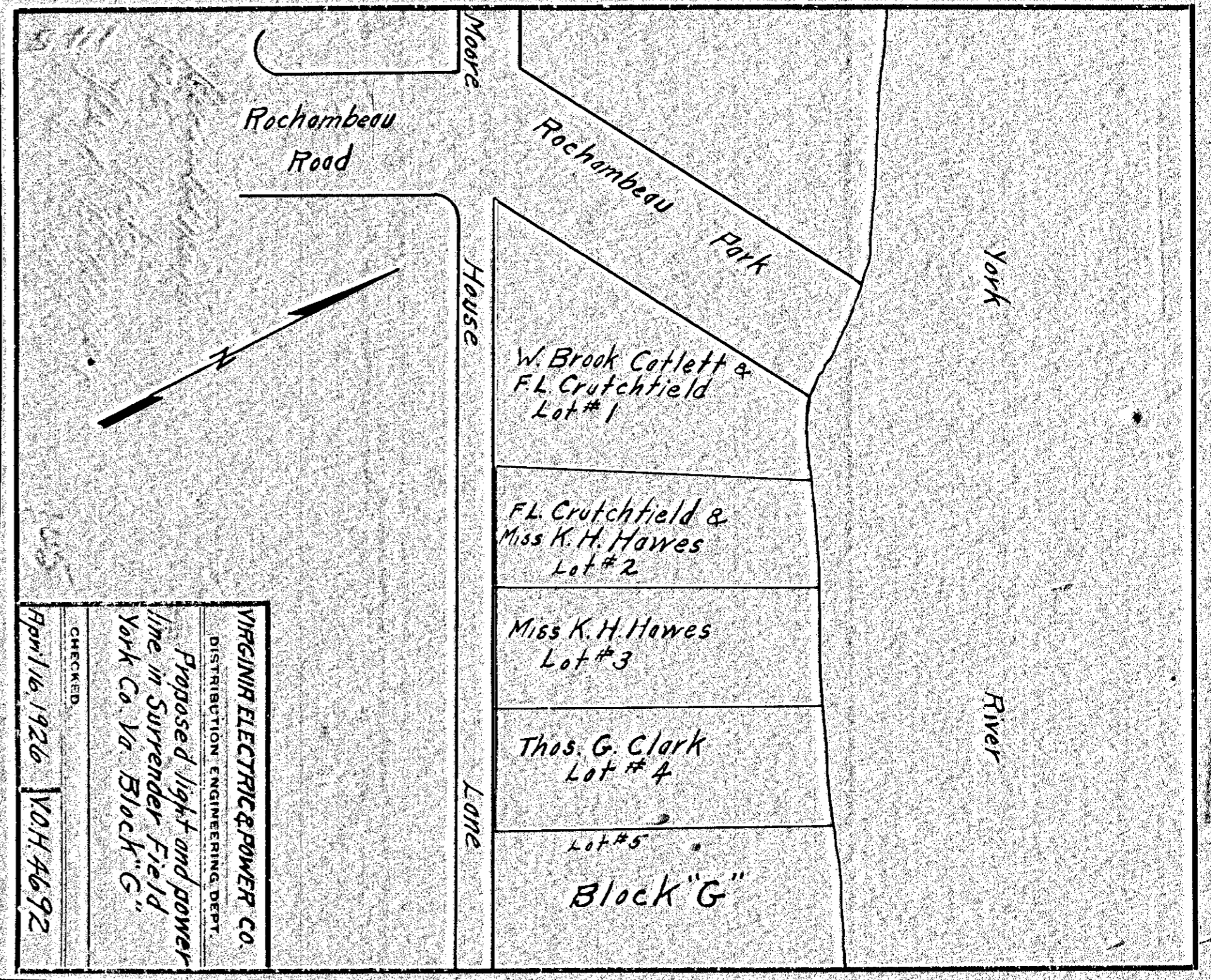
"Moore House tract" of Temple Farm

144



VIRGINIA ELECTRIC & POWER CO.
 WILLIAMSBURG - YORKTOWN
 DISTRIBUTION ENGINEERING DEPT.
 Proposed light and power
 line in Surrender Field,
 York Co. Va. Block "G".
 Checked: [Signature]
 Date: April 16, 1926. V.O.H. 46,92.

147



VIRGINIA ELECTRIC & POWER CO.
 DISTRIBUTION ENGINEERING DEPT.
 Proposed light and power
 line in Surrender Field,
 York Co. Va. Block "G".
 Checked: [Signature]
 Date: April 16, 1926. V.O.H. 46,92.

145