

VIRGINIA ELECTRIC & POWER CO.
WILLIAMSBURG DISTRIBUTION
TRANSMISSION LINE
PLAT TO ACCOMPANY RIGHT-OF-WAY AGREEMENT
WITH
JOHN D. ROCKEFELLER JR.
DISTRICT
COUNTY
STATE
SCALE: 1" = 100'
DATE: FEB. 30, 1934
SURVEYED BY
D.A.H. WMBG # 1117

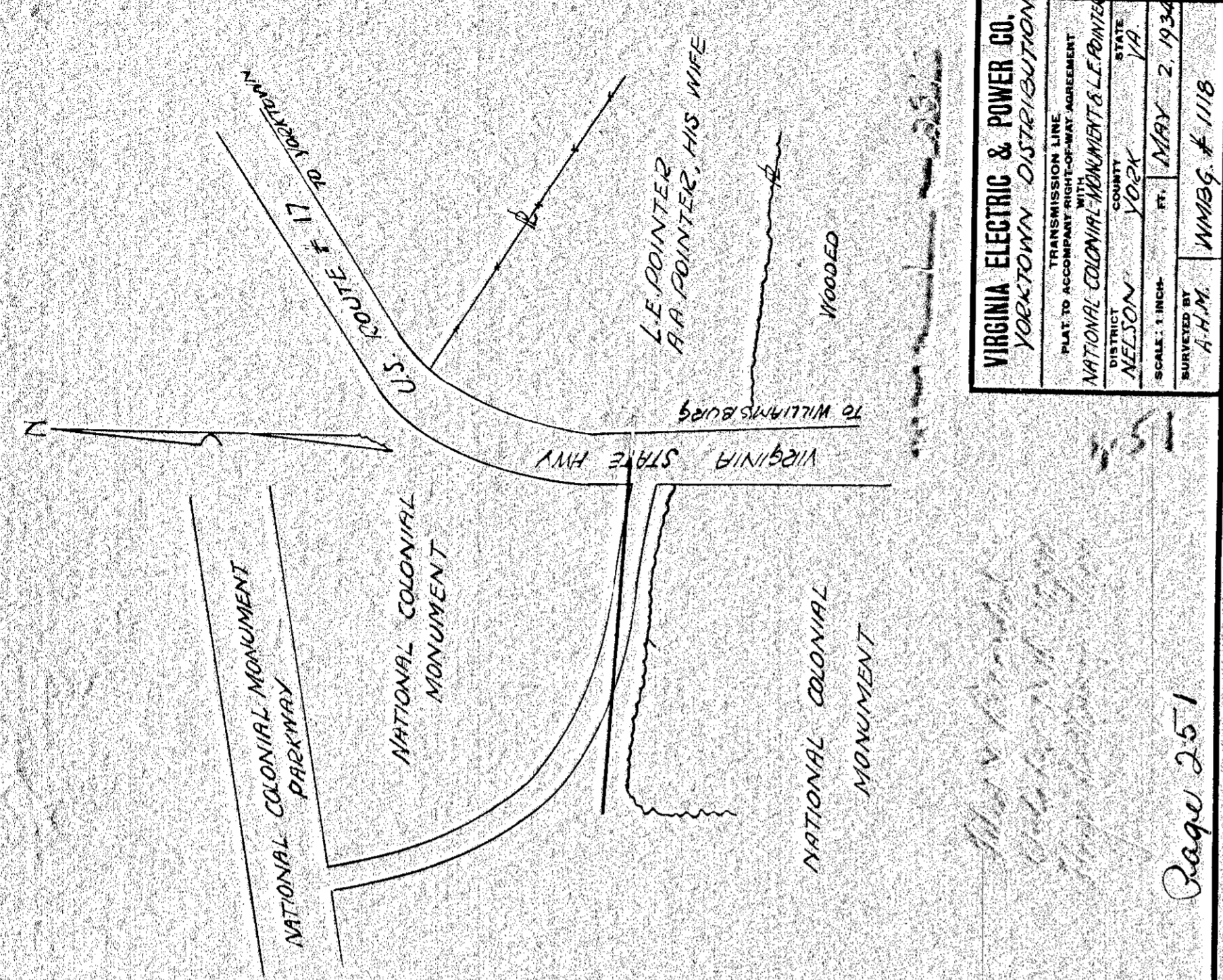
Filed & Recorded
Oct 25th 1934
County Clerk's Office
Holladay Clerk

Page 250

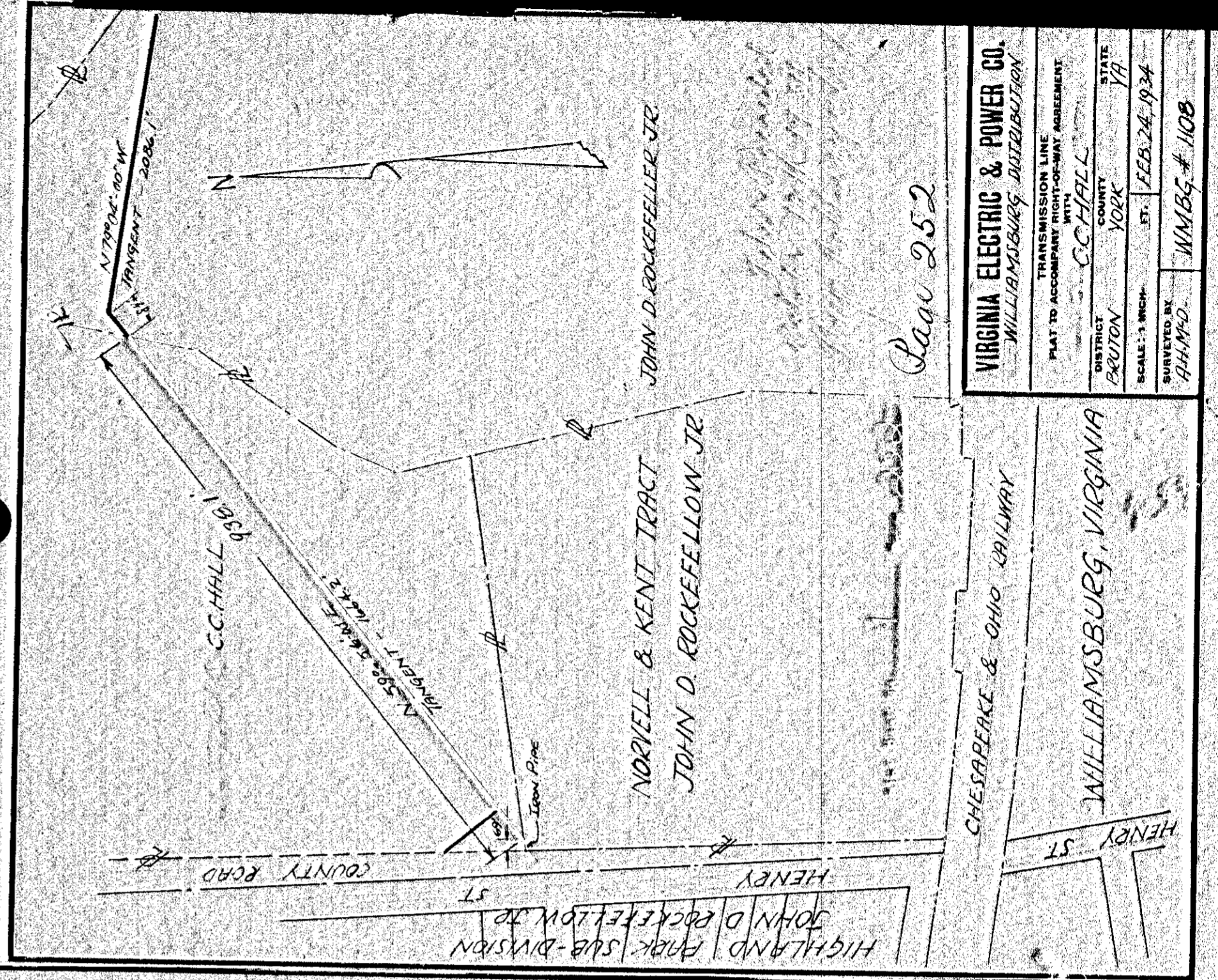
251
252

Page 251

Page 252



VIRGINIA ELECTRIC & POWER CO.
WILLIAMSBURG DISTRIBUTION
TRANSMISSION LINE
PLAT TO ACCOMPANY RIGHT-OF-WAY AGREEMENT
WITH
NATIONAL COLONIAL MONUMENT & L.E. POINTER
DISTRICT
COUNTY
STATE
SCALE: 1" = 100'
DATE: MAY 2, 1934
SURVEYED BY
D.A.H. WMBG # 1118



VIRGINIA ELECTRIC & POWER CO.
WILLIAMSBURG DISTRIBUTION
TRANSMISSION LINE
PLAT TO ACCOMPANY RIGHT-OF-WAY AGREEMENT
WITH
C.C. HALL
DISTRICT
COUNTY
STATE
SCALE: 1" = 100'
DATE: FEB. 24, 1934
SURVEYED BY
D.A.H. WMBG # 1108