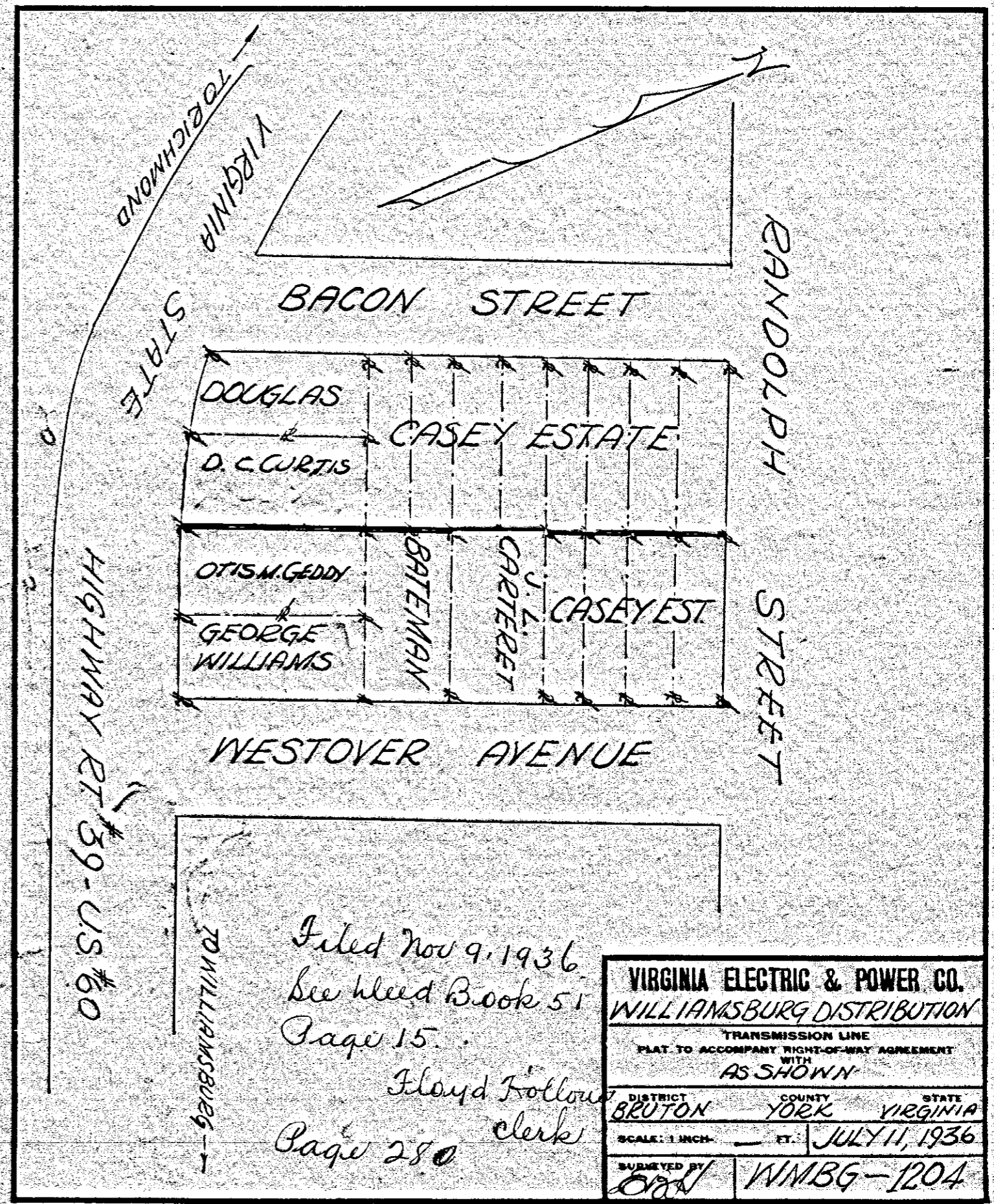


Filed Nov 9, 1936
See bleed Book
51 Page 19
Floyd Holloway
Clerk

VIRGINIA ELECTRIC & POWER CO. WILLIAMSBURG DISTRIBUTION		
TRANSMISSION LINE PLAT TO ACCOMPANY RIGHT-OF-WAY AGREEMENT WITH AS SHOWN		
DISTRICT BRUTON	COUNTY YORK	STATE VIRGINIA
SCALE: 1 INCH =	FT.	JULY 11, 1936
SURVEYED BY EJH		WMBG-1204

Page 279

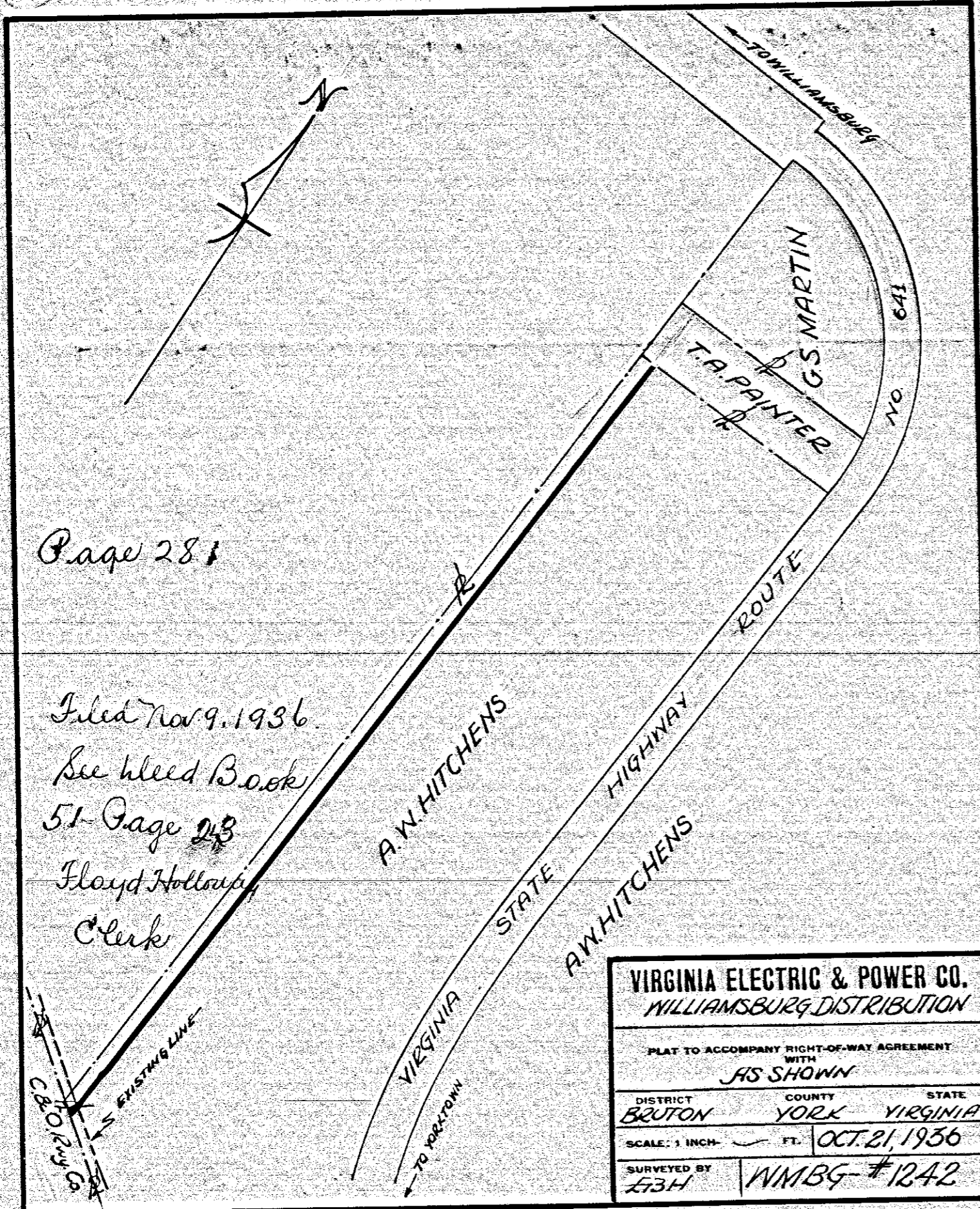
279



Filed Nov 9, 1936
See bleed Book 51
Page 15
Floyd Holloway
Clerk
Page 280

VIRGINIA ELECTRIC & POWER CO. WILLIAMSBURG DISTRIBUTION		
TRANSMISSION LINE PLAT TO ACCOMPANY RIGHT-OF-WAY AGREEMENT WITH AS SHOWN		
DISTRICT BRUTON	COUNTY YORK	STATE VIRGINIA
SCALE: 1 INCH =	FT.	JULY 11, 1936
SURVEYED BY EJH		WMBG-1204

280

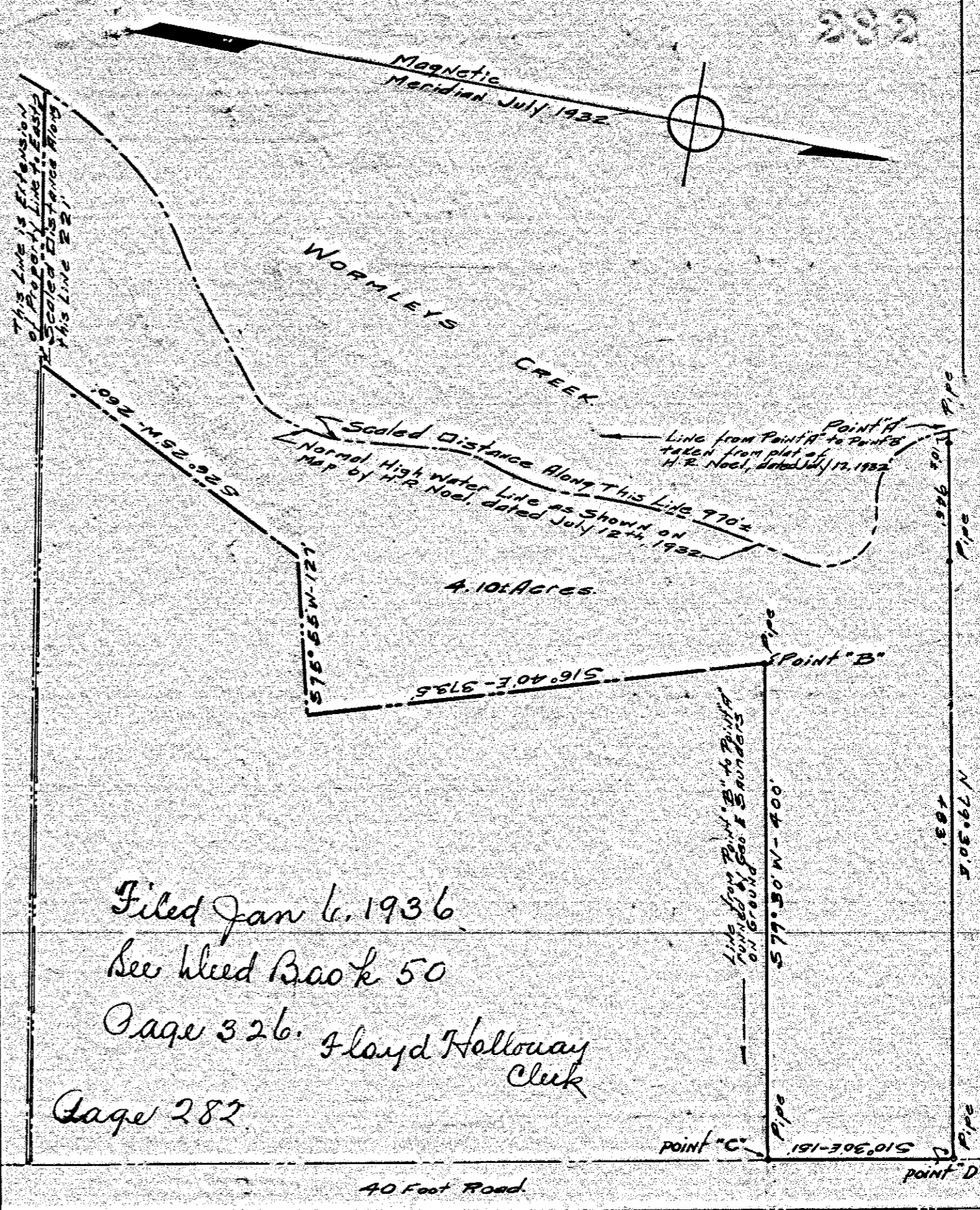


Page 281

Filed Nov 9, 1936
See bleed Book
51 Page 28
Floyd Holloway
Clerk

VIRGINIA ELECTRIC & POWER CO. WILLIAMSBURG DISTRIBUTION		
PLAT TO ACCOMPANY RIGHT-OF-WAY AGREEMENT WITH AS SHOWN		
DISTRICT BRUTON	COUNTY YORK	STATE VIRGINIA
SCALE: 1 INCH =	FT.	OCT. 21, 1936
SURVEYED BY EJH		WMBG-1242

281



Filed Jan 6, 1936
See bleed Book 50
Page 326
Floyd Holloway
Clerk
Page 282

PLAT of 4.102 Acres of Land Situated in York County, Va.
Property of MARY P. BERKLEY, Purchased from the JAMESTOWN
CORPORATION.
Plat made from lines run by Geo. E. Saunders on the ground and
from data as shown on plat made by H. R. Noel, Certified Surveyor,
dated July 12th, 1932.
Scale 1" = 100'
May 29th, 1936
Geo. E. Saunders
Certified Professional Civil Engineer

282