

VIRGINIA ELECTRIC & POWER CO.
WILLIAMSBURG DISTRIBUTION
TRANSMISSION LINE
PLAT TO ACCOMPANY RIGHT-OF-WAY AGREEMENT
AS SHOWN

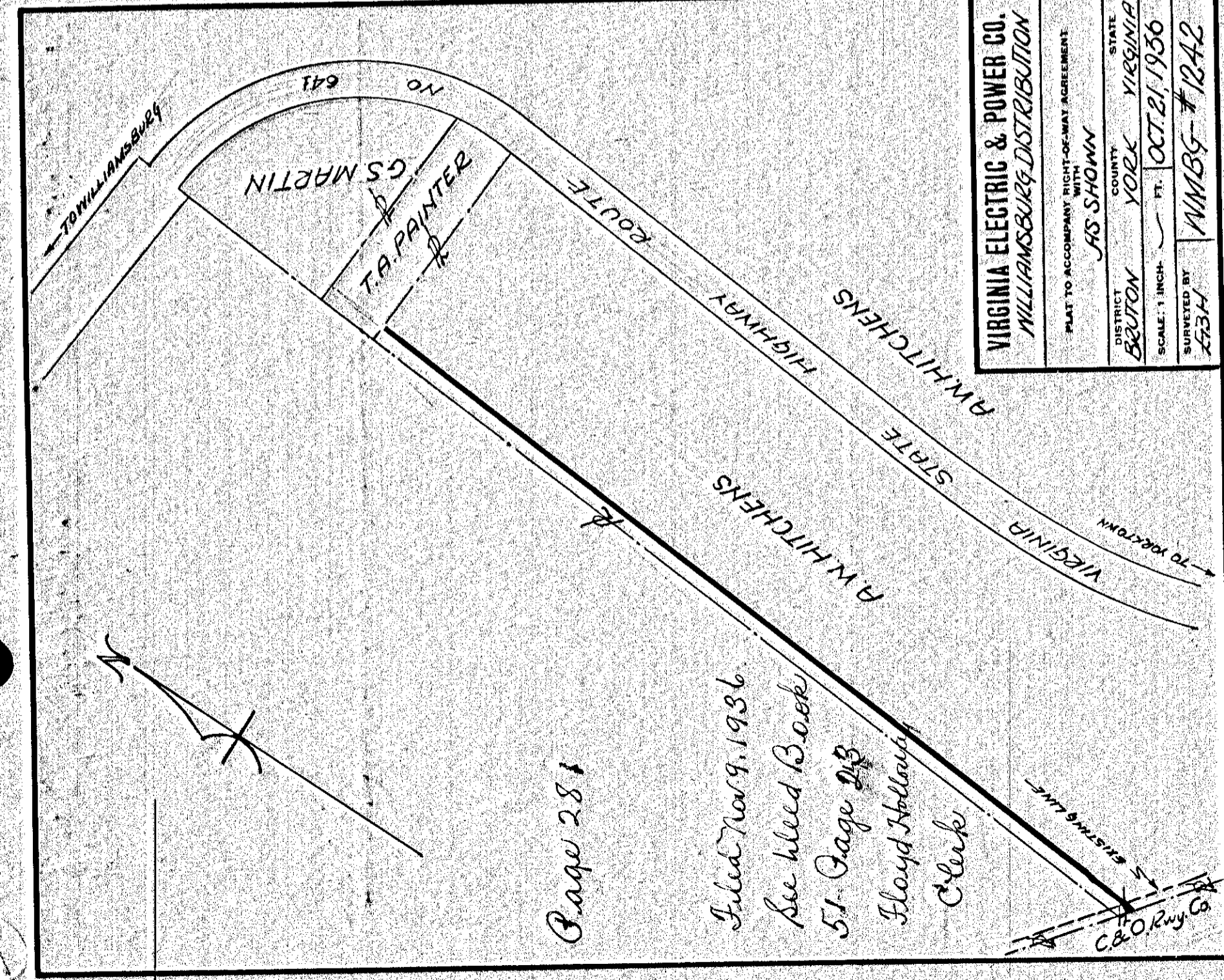
DISTRICT BEUTON COUNTY YORK STATE VIRGINIA
SCALE: 1 INCH = 100 FT. JULY 11, 1936
SUBMITTED BY WMBG-1204

Filed Nov 9, 1936
See blue Book
51 Page 19
Floyd Holloway
Clerk

Page 279

279

281

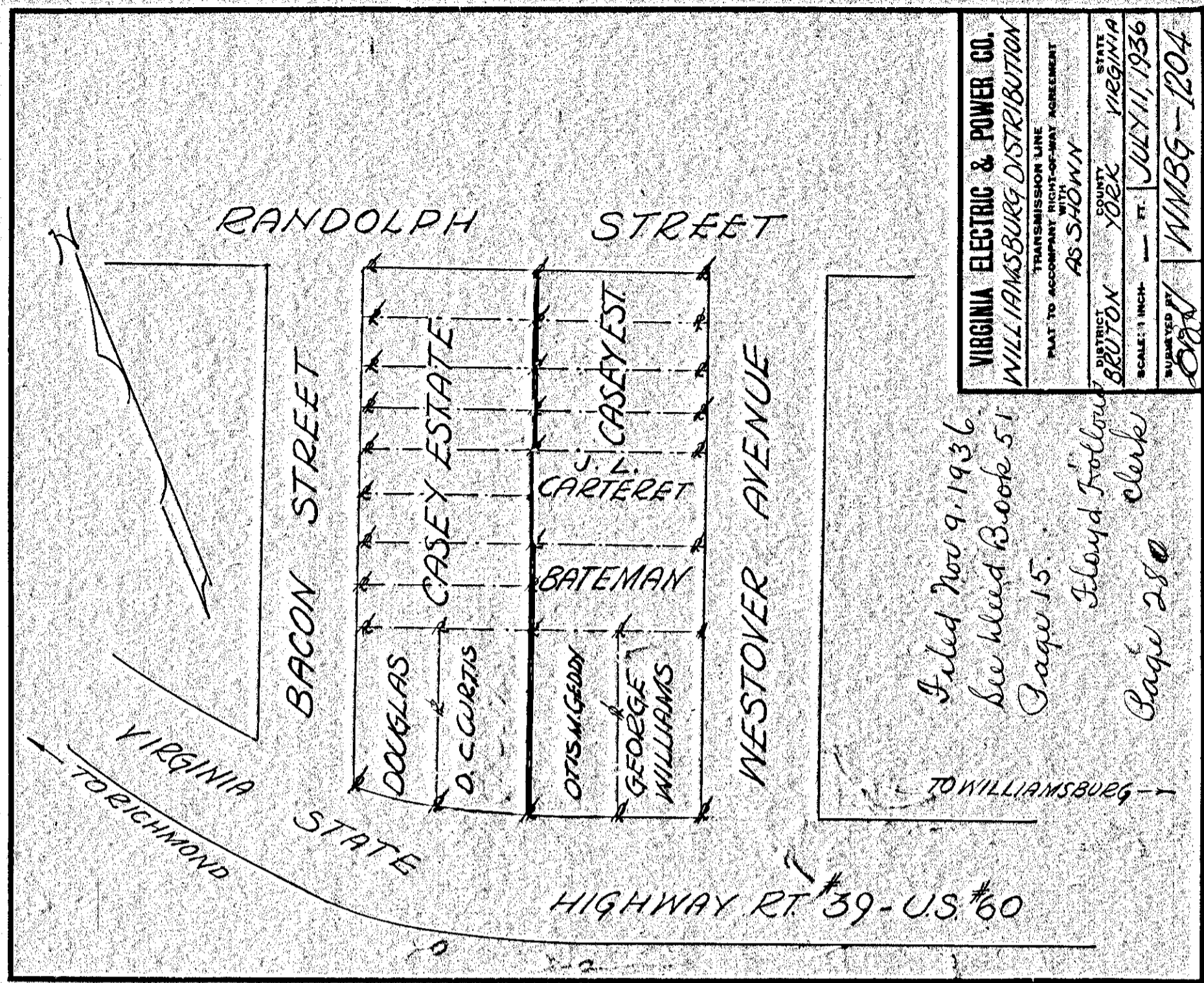


VIRGINIA ELECTRIC & POWER CO.
WILLIAMSBURG DISTRIBUTION
TRANSMISSION LINE
PLAT TO ACCOMPANY RIGHT-OF-WAY AGREEMENT
AS SHOWN

DISTRICT BEUTON COUNTY YORK STATE VIRGINIA
SCALE: 1 INCH = 100 FT. OCT 21, 1936
SUBMITTED BY WMBG-1242

Filed Nov 9, 1936
See blue Book
51 Page 28
Floyd Holloway
Clerk

Page 281



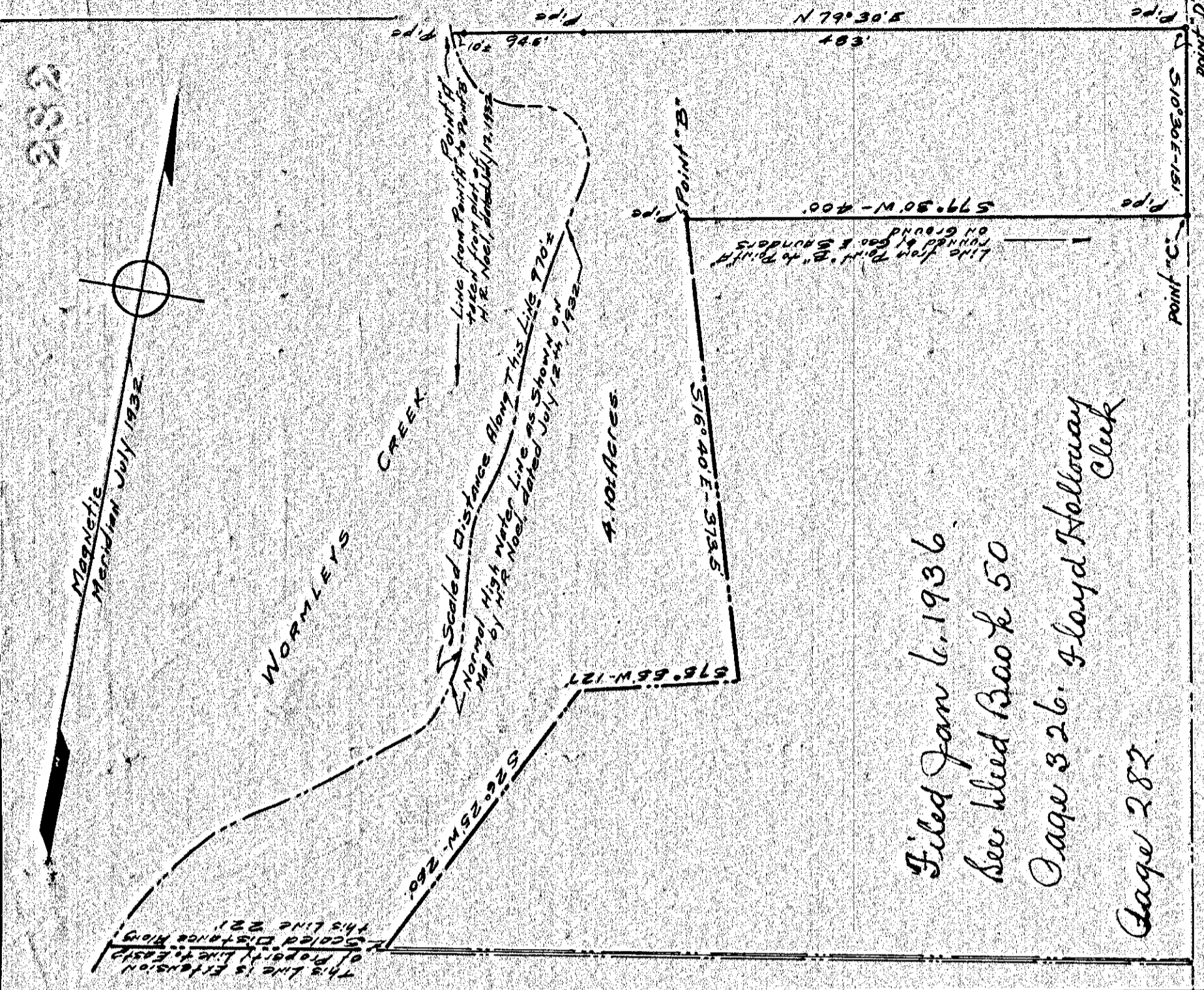
VIRGINIA ELECTRIC & POWER CO.
WILLIAMSBURG DISTRIBUTION
TRANSMISSION LINE
PLAT TO ACCOMPANY RIGHT-OF-WAY AGREEMENT
AS SHOWN

DISTRICT BEUTON COUNTY YORK STATE VIRGINIA
SCALE: 1 INCH = 100 FT. JULY 11, 1936
SUBMITTED BY WMBG-1204

Filed Nov 9, 1936
See blue Book 51
Page 15
Floyd Holloway
Clerk

Page 280

280



VIRGINIA ELECTRIC & POWER CO.
WILLIAMSBURG DISTRIBUTION
TRANSMISSION LINE
PLAT TO ACCOMPANY RIGHT-OF-WAY AGREEMENT
AS SHOWN

DISTRICT BEUTON COUNTY YORK STATE VIRGINIA
SCALE: 1 INCH = 100 FT. MAY 29, 1935

Filed Jan 6, 1936
See blue Book 50
Page 326
Floyd Holloway
Clerk

Page 282

Wm. E. Swanson
Certified Professional Civil Engineer