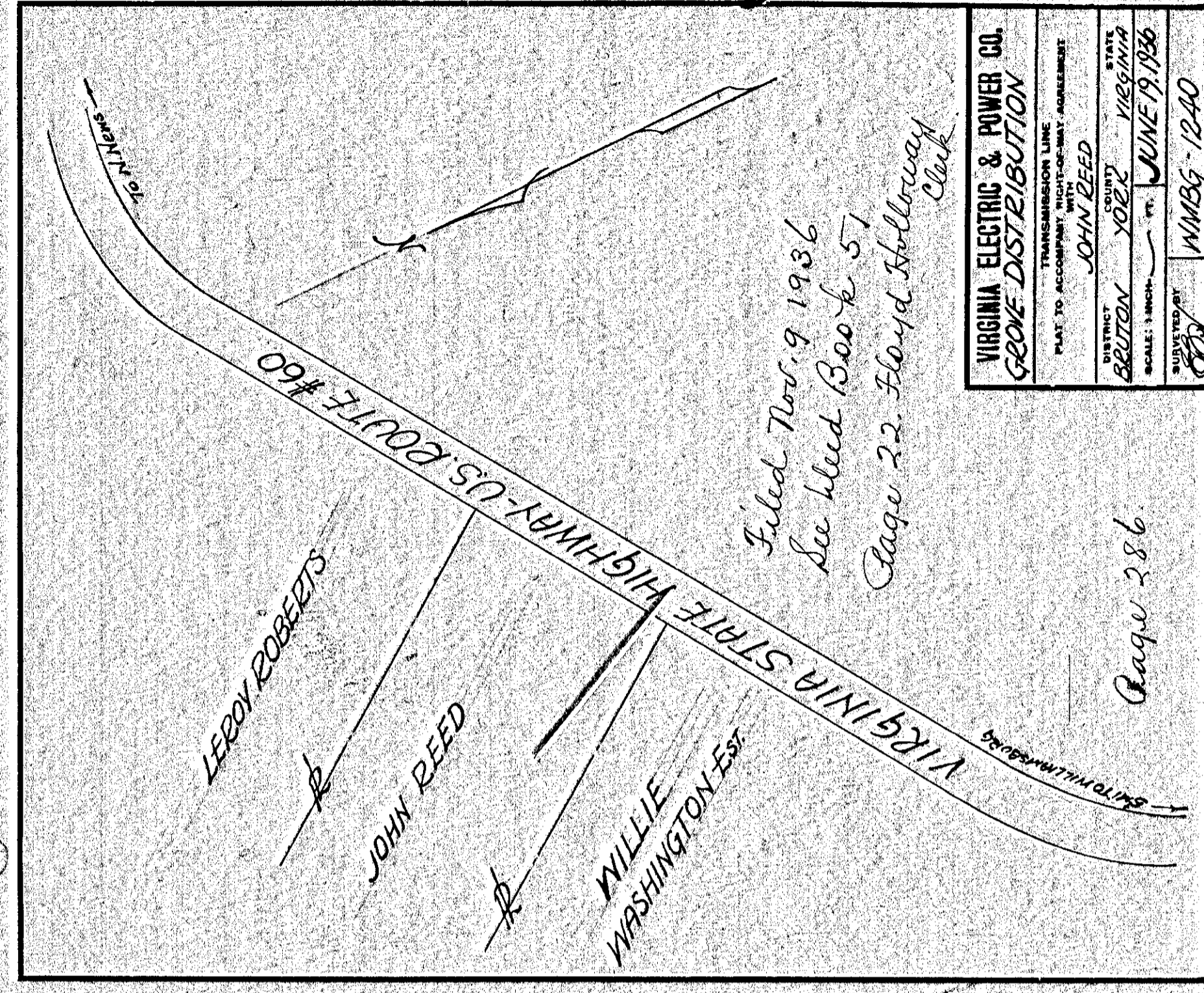


Filed Nov. 9, 1936  
See bleed Book 51  
Page 12  
Floyd Holloway  
Clerk

Page 284  
VIRGINIA ELECTRIC & POWER CO.  
WILLIAMSBURG DISTRIBUTION  
TRANSMISSION LINE  
PLAT TO ACCOMPANY RIGHT-OF-WAY AGREEMENT  
DRAWN BY J.A. WOOD  
DISTRICT BRUTON COUNTY YORK STATE VIRGINIA  
SCALE: 1 INCH = 100 FT. DATE: JUNE 2, 1936  
SUBMITTED BY F.B.H. NIMBG-#1201

284

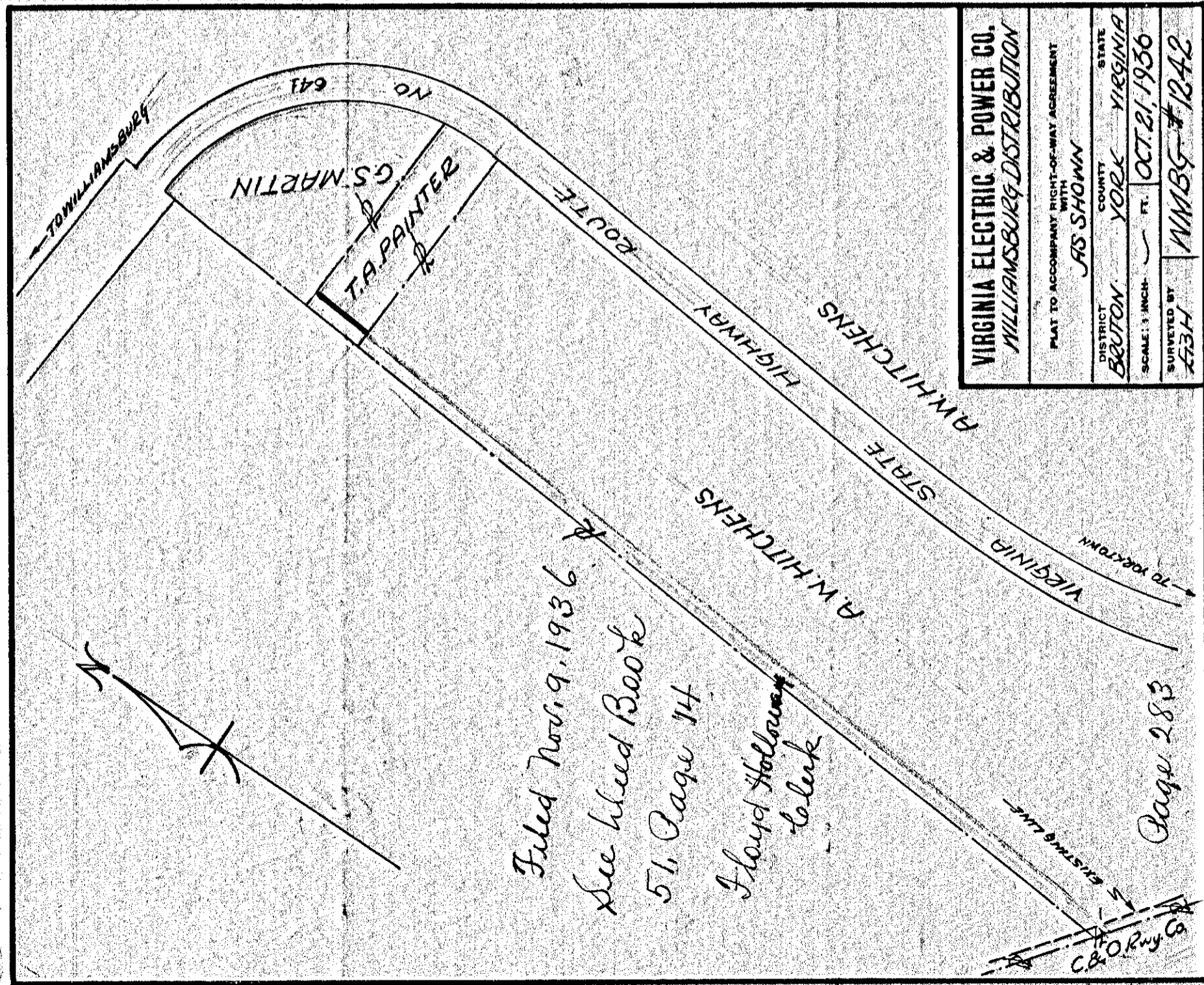
286



Filed Nov. 9, 1936  
See bleed Book 51  
Page 22  
Floyd Holloway  
Clerk

Page 286  
VIRGINIA ELECTRIC & POWER CO.  
GROVE DISTRIBUTION  
TRANSMISSION LINE  
PLAT TO ACCOMPANY RIGHT-OF-WAY AGREEMENT  
DRAWN BY JOHN REED  
DISTRICT BRUTON COUNTY YORK STATE VIRGINIA  
SCALE: 1 INCH = 100 FT. DATE: JUNE 19, 1936  
SUBMITTED BY F.B.H. NIMBG-1240

Page 286

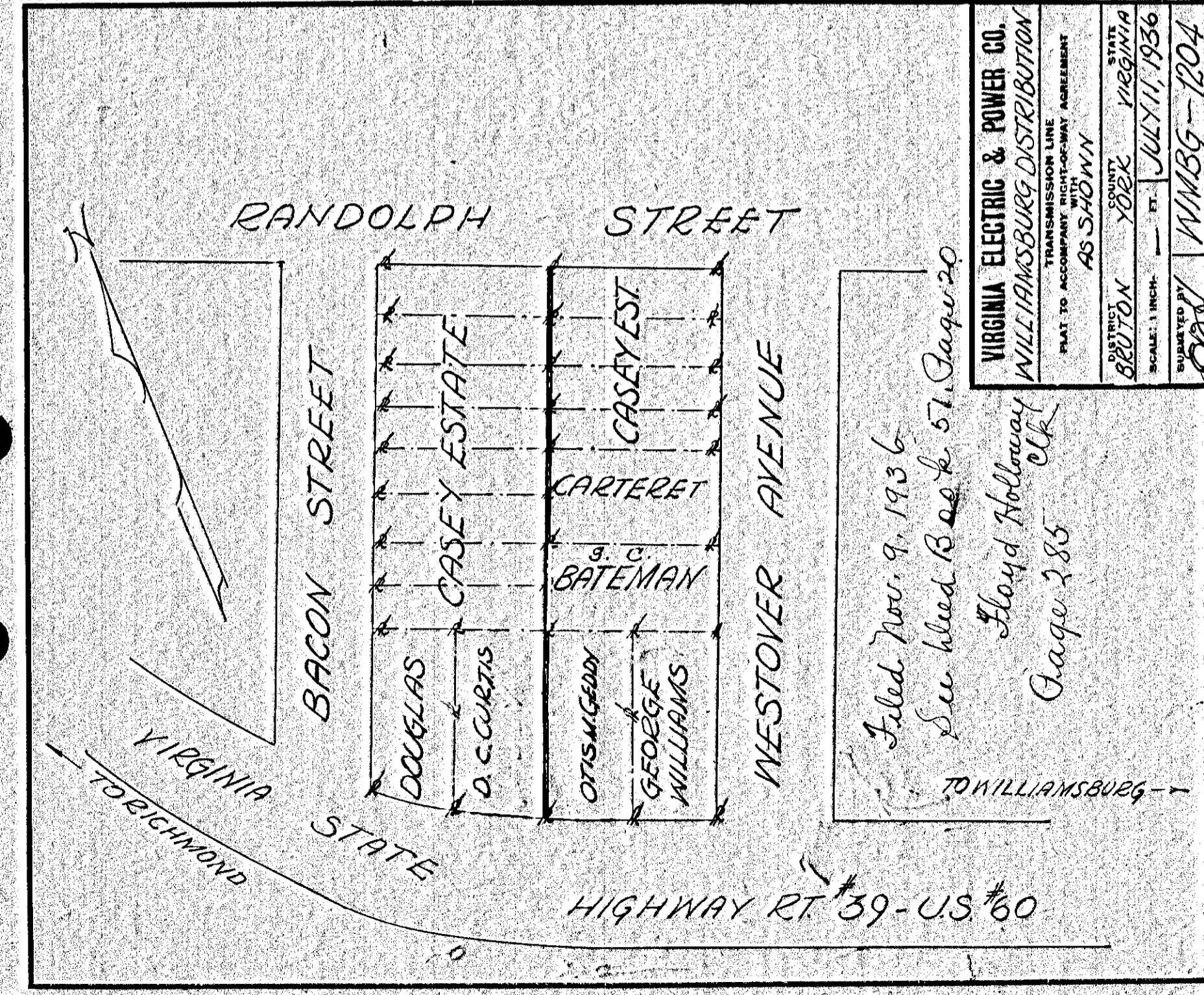


Filed Nov. 9, 1936  
See bleed Book 51, Page 14  
Floyd Holloway  
Clerk

Page 283  
VIRGINIA ELECTRIC & POWER CO.  
WILLIAMSBURG DISTRIBUTION  
TRANSMISSION LINE  
PLAT TO ACCOMPANY RIGHT-OF-WAY AGREEMENT  
DRAWN BY J.S. SHOWN  
DISTRICT BRUTON COUNTY YORK STATE VIRGINIA  
SCALE: 1 INCH = 100 FT. DATE: OCT. 21, 1936  
SUBMITTED BY F.B.H. NIMBG-#1242

283

285



Filed Nov. 9, 1936  
See bleed Book 51, Page 20  
Floyd Holloway  
Clerk

Page 285  
VIRGINIA ELECTRIC & POWER CO.  
WILLIAMSBURG DISTRIBUTION  
TRANSMISSION LINE  
PLAT TO ACCOMPANY RIGHT-OF-WAY AGREEMENT  
DRAWN BY AS SHOWN  
DISTRICT BRUTON COUNTY YORK STATE VIRGINIA  
SCALE: 1 INCH = 100 FT. DATE: JULY 11, 1936  
SUBMITTED BY F.B.H. NIMBG-1204

Page 285