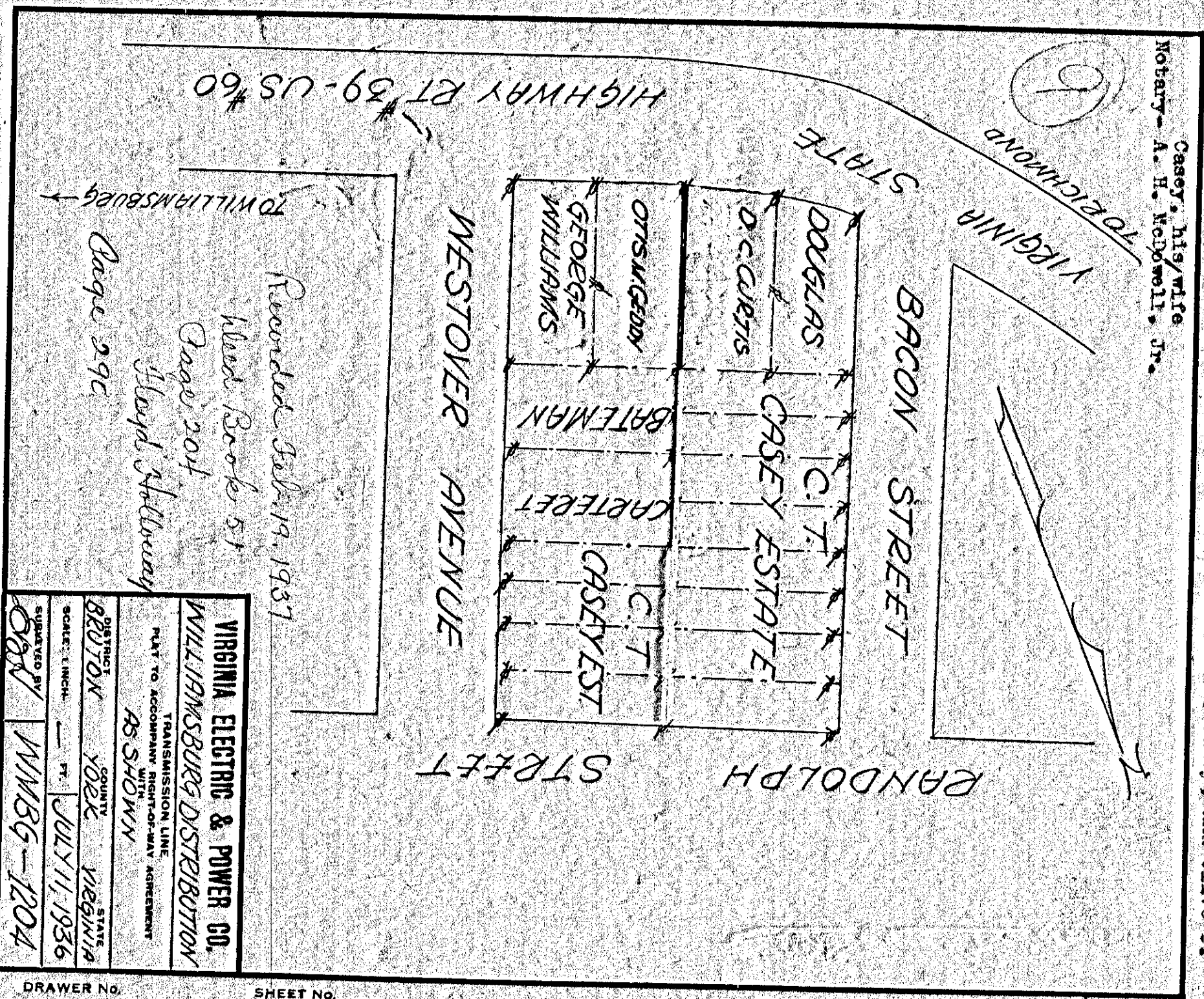


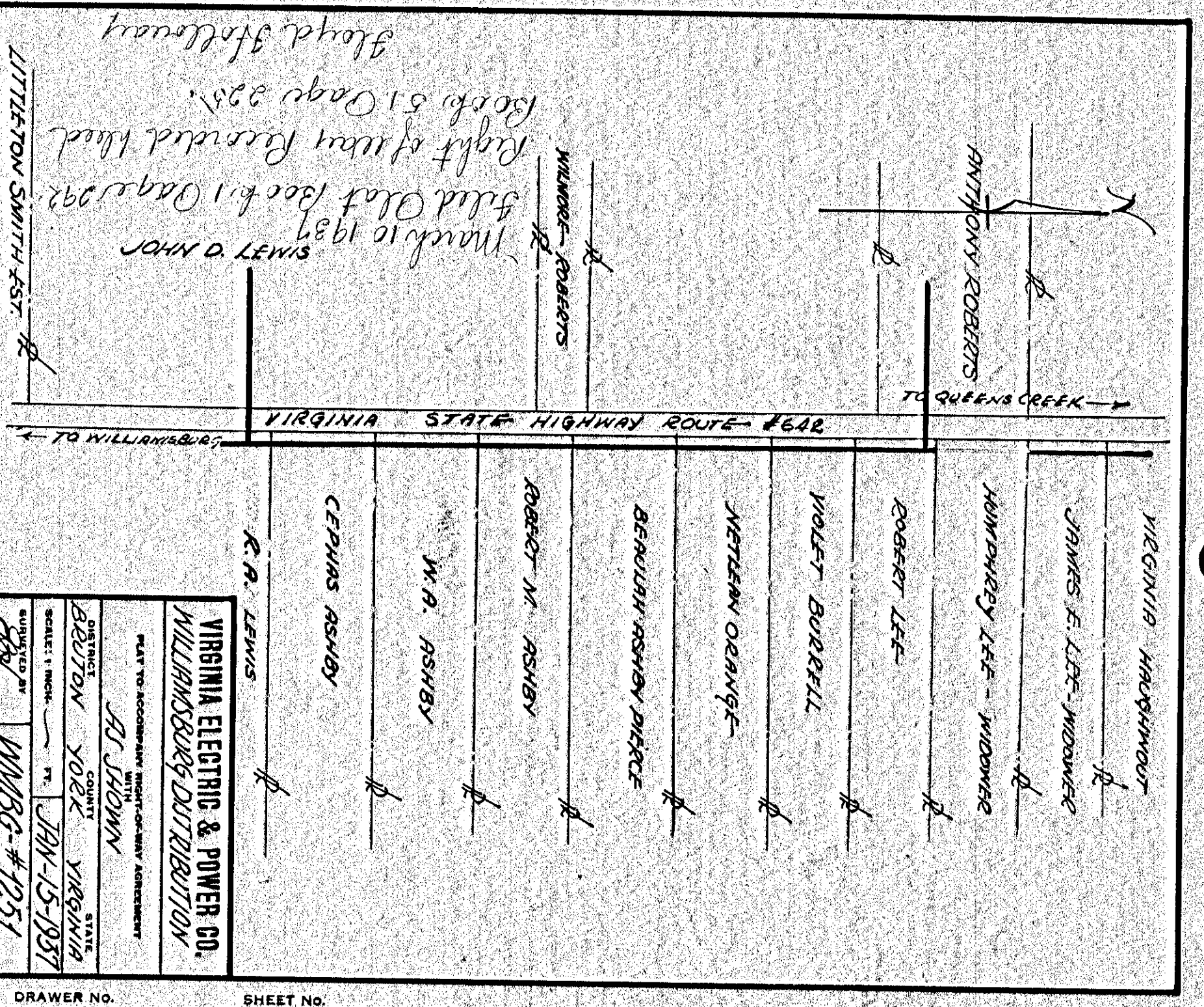
July 11, 1936 by S. C. Bateman and Helen Dixon Bateman, his wife  
 July 16, 1936 by Jesse L. Carbert and Leona Carbert, his wife  
 July 24, 1936 by Orlis W. Caddy and Hattie W. Caddy, his wife, and  
 Clarence T. Casey, Yarnale D. Casey, Carlton C. Casey, and Olive D.  
 Casey, his wife  
 Notary - A. H. McDowell, Jr.



VIRGINIA ELECTRIC & POWER CO.  
 WILLIAMSBURG DISTRIBUTION  
 PAY TO ACCOMPANY RIGHT-OF-WAY AGREEMENT  
 AS SHOWN  
 DISTRICT YORK VIRGINIA  
 COUNTY YORK  
 SCALE: 1 INCH = 100 FEET  
 JULY 11, 1936  
 SUBMITTED BY WMBG-1204

DRAWER NO. SHEET NO.

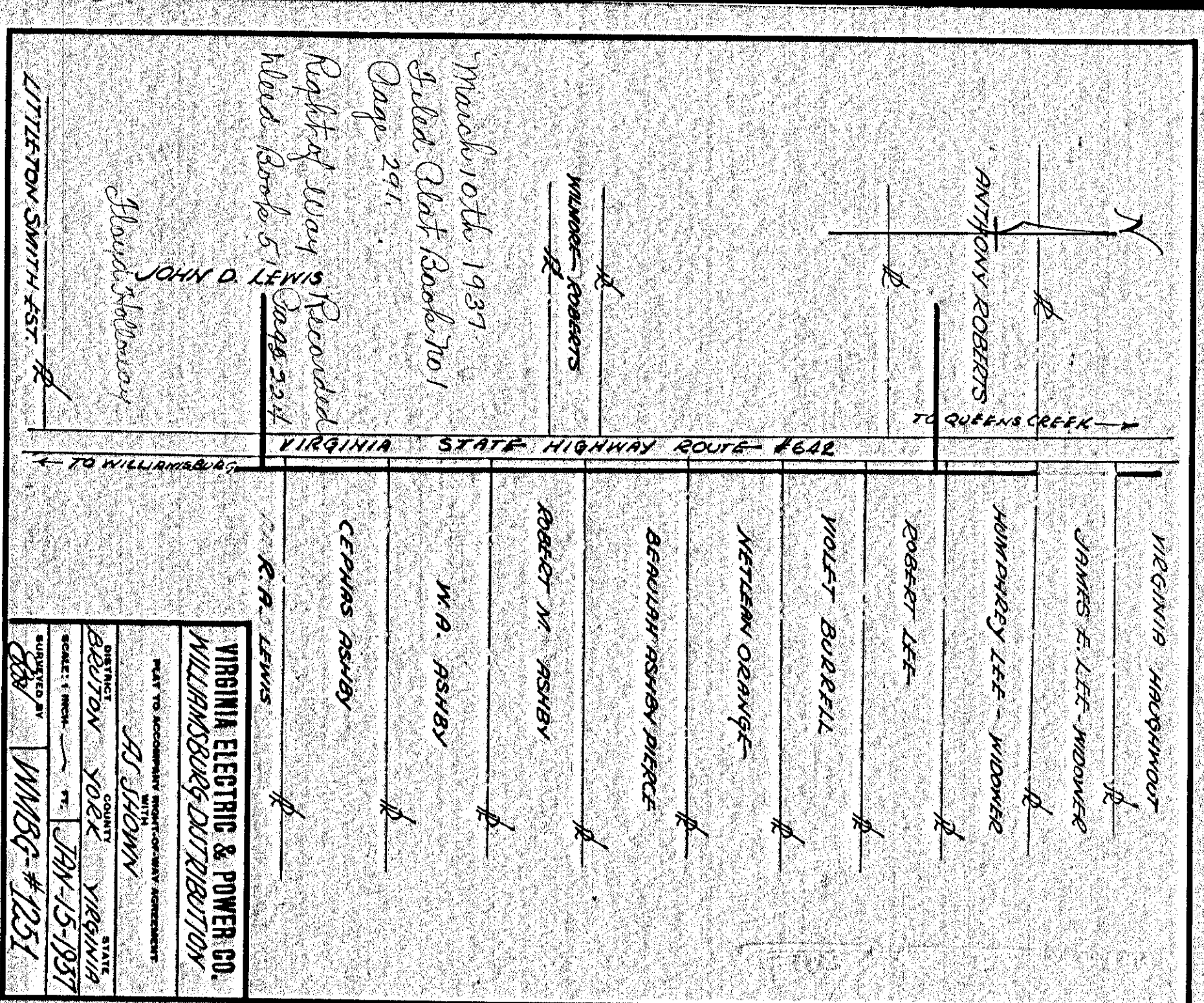
290



VIRGINIA ELECTRIC & POWER CO.  
 WILLIAMSBURG DISTRIBUTION  
 PAY TO ACCOMPANY RIGHT-OF-WAY AGREEMENT  
 AS SHOWN  
 DISTRICT YORK VIRGINIA  
 COUNTY YORK  
 SCALE: 1 INCH = 100 FEET  
 JAN 15 1937  
 SUBMITTED BY WMBG-1251

DRAWER NO. SHEET NO.

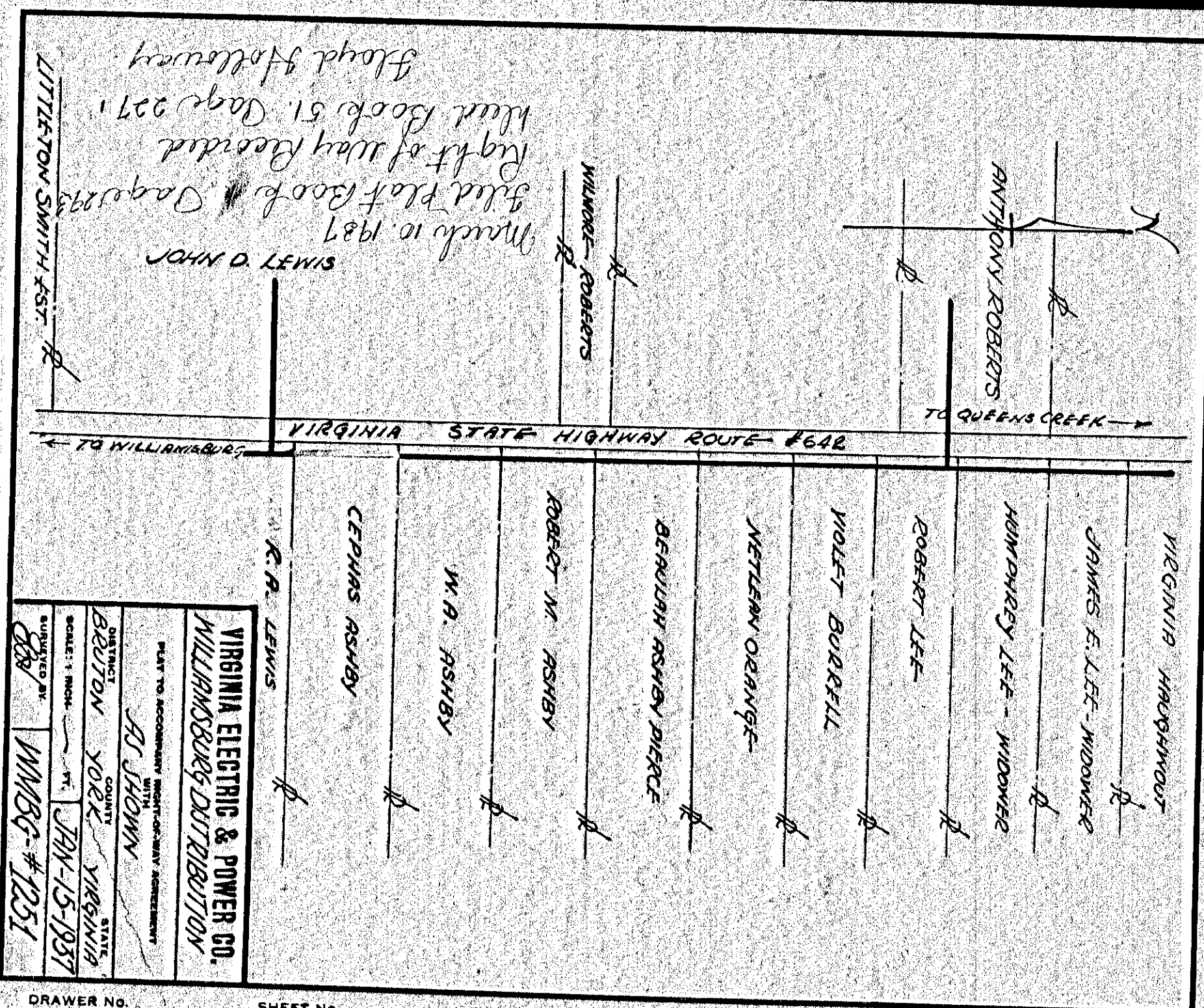
292



VIRGINIA ELECTRIC & POWER CO.  
 WILLIAMSBURG DISTRIBUTION  
 PAY TO ACCOMPANY RIGHT-OF-WAY AGREEMENT  
 AS SHOWN  
 DISTRICT YORK VIRGINIA  
 COUNTY YORK  
 SCALE: 1 INCH = 100 FEET  
 JAN 15 1937  
 SUBMITTED BY WMBG-1251

DRAWER NO. SHEET NO.

291



VIRGINIA ELECTRIC & POWER CO.  
 WILLIAMSBURG DISTRIBUTION  
 PAY TO ACCOMPANY RIGHT-OF-WAY AGREEMENT  
 AS SHOWN  
 DISTRICT YORK VIRGINIA  
 COUNTY YORK  
 SCALE: 1 INCH = 100 FEET  
 JAN 15 1937  
 SUBMITTED BY WMBG-1251

DRAWER NO. SHEET NO.

293