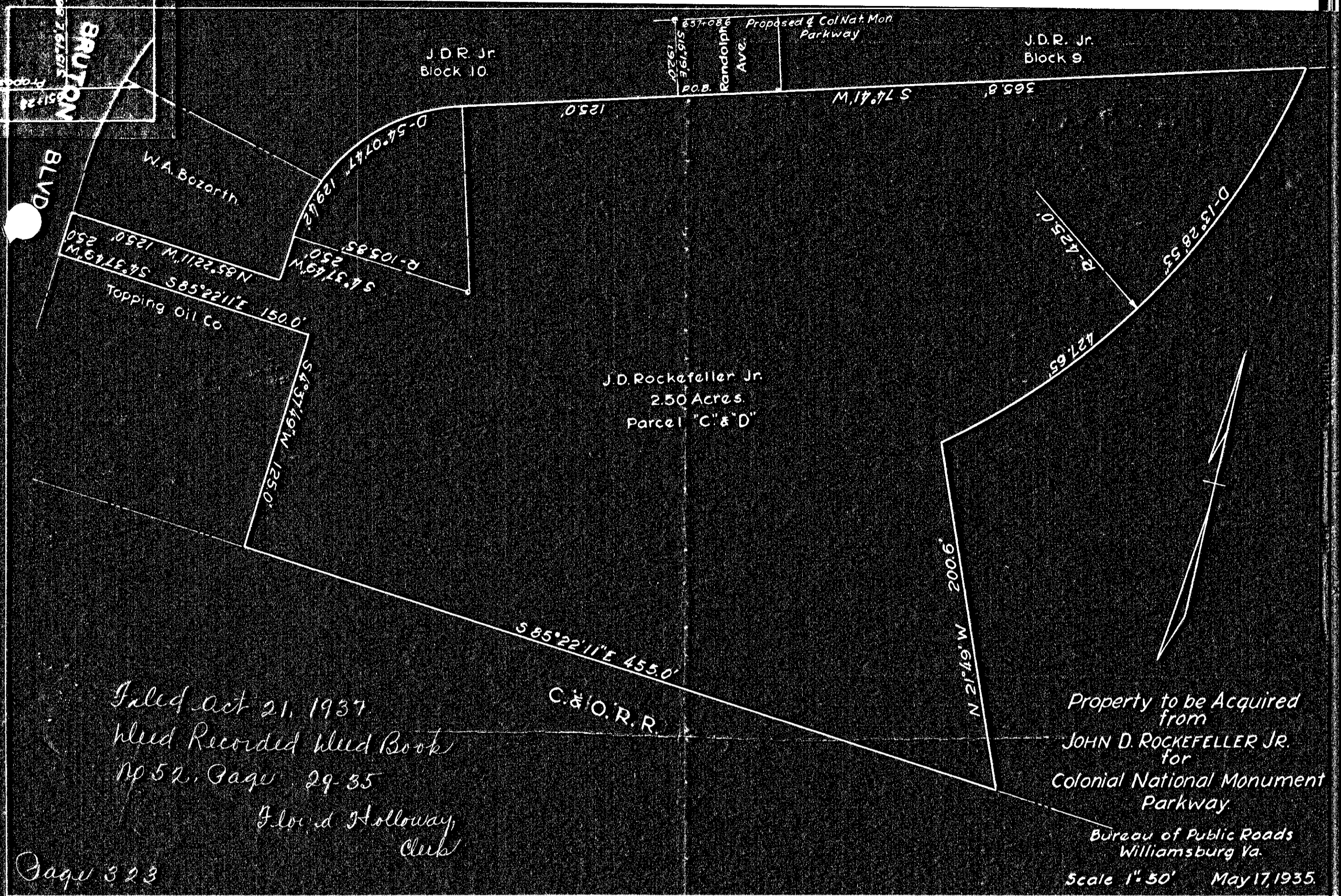
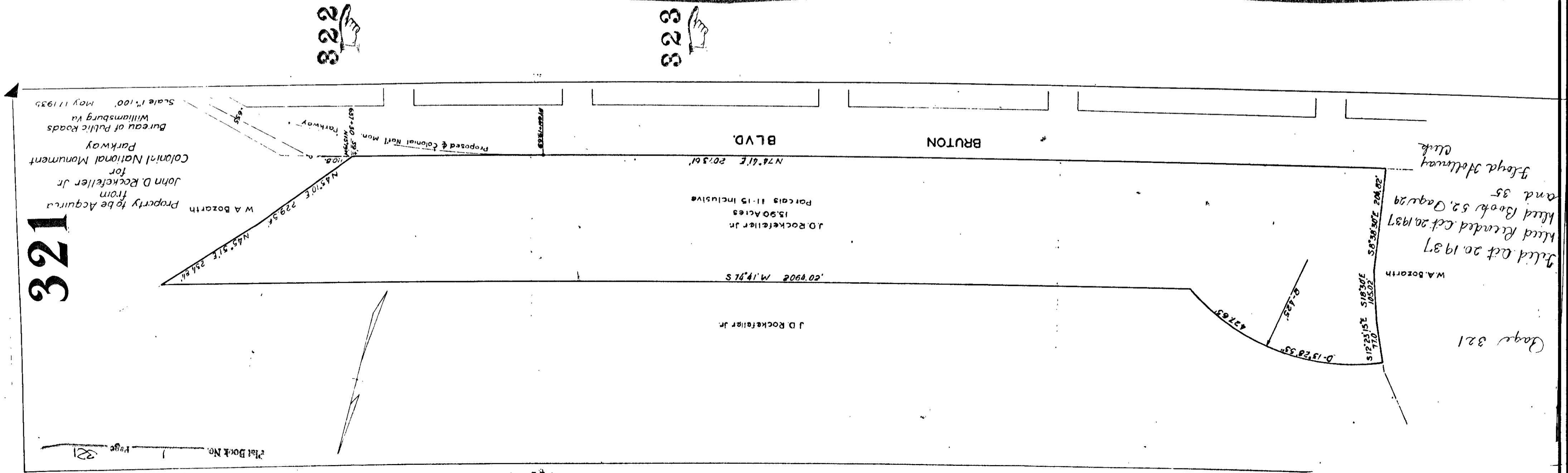


Filed Oct. 20, 1937
 Record Book 20, Page 29-35
 Property to be Acquired from JOHN D. ROCKEFELLER JR. for Colonial National Monument Parkway.
 Bureau of Public Roads, Williamsburg Va.
 Scale 1"=50' May 17, 1935.
 Revised 7-31-35 To show pond & pipes
 Clerk
 Page 322



Filed Oct 21, 1937
 Record Book No 52, Page 29-35
 Property to be Acquired from JOHN D. ROCKEFELLER JR. for Colonial National Monument Parkway.
 Bureau of Public Roads, Williamsburg Va.
 Scale 1"=50' May 17, 1935.
 Clerk
 Page 323



Filed Oct 20, 1937
 Record Book 20, Page 29-35
 Property to be Acquired from JOHN D. ROCKEFELLER JR. for Colonial National Monument Parkway.
 Bureau of Public Roads, Williamsburg Va.
 Scale 1"=100' May 17, 1935.
 Clerk
 Page 321