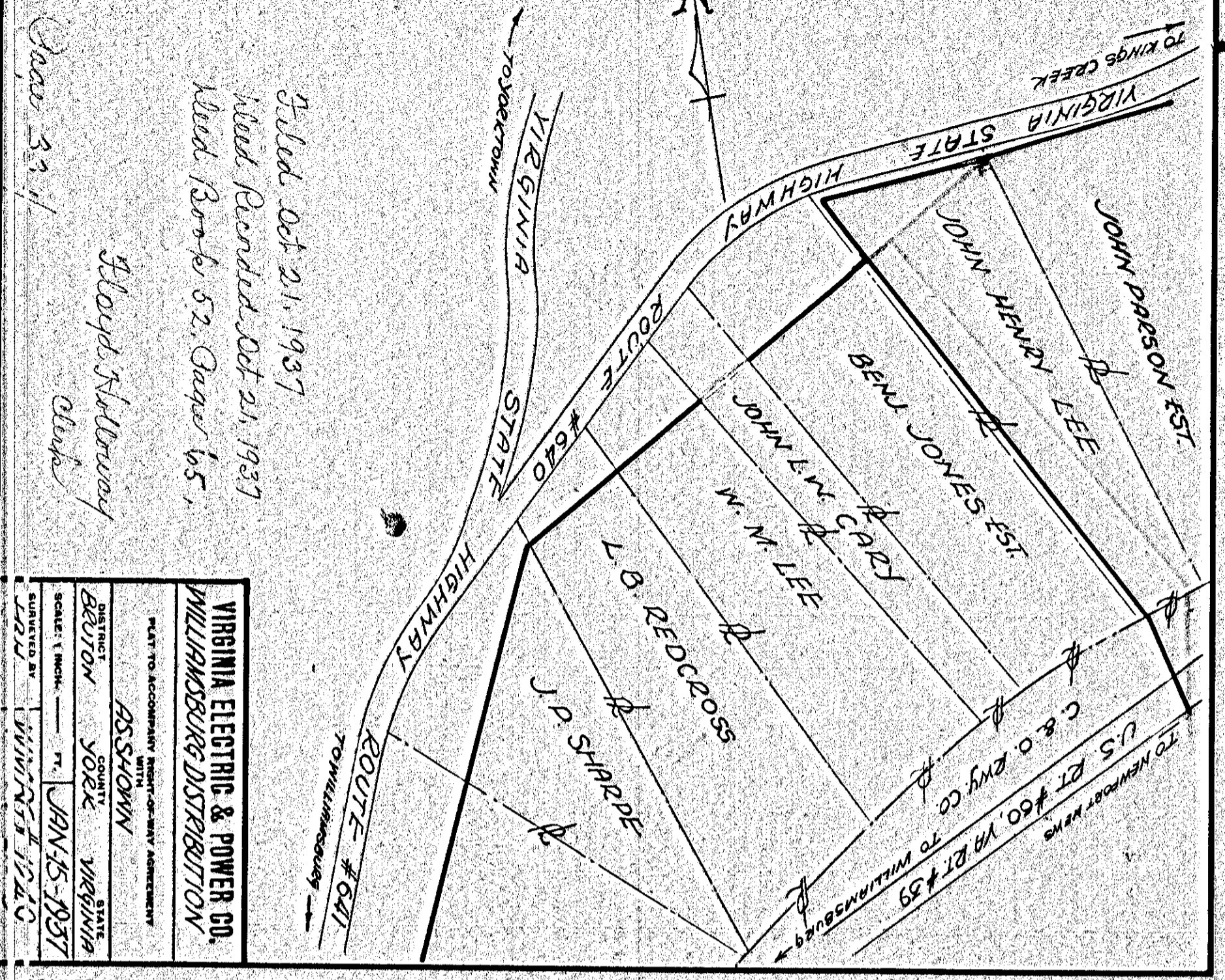


VIRGINIA ELECTRIC & POWER CO.
 YORK RIVER EXTENSION
 TRANSMISSION LINE
 PLAT TO ACCOMPANY RIGHT-OF-WAY AGREEMENT
 WITH
 AS SHOWN
 COUNTY YORK STATE VIRGINIA
 BRUTON
 SCALE: 1 INCH = 100 FT. JAN-15-1937
 SURVEYED BY WMBG #1273

DRAWER No. SHEET No.

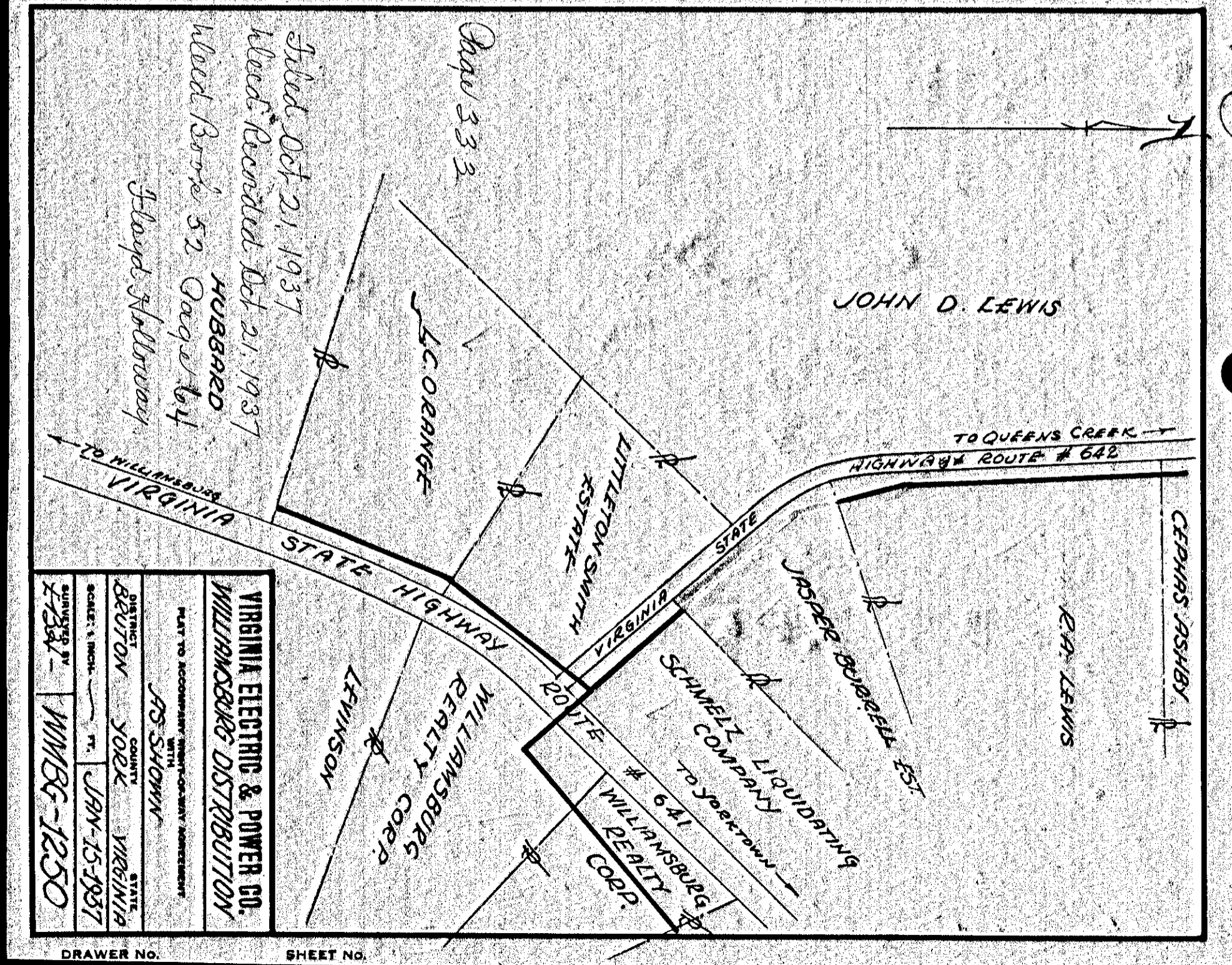
332
334



VIRGINIA ELECTRIC & POWER CO.
 WILLIAMSBURG DISTRIBUTION
 TRANSMISSION LINE
 PLAT TO ACCOMPANY RIGHT-OF-WAY AGREEMENT
 WITH
 AS SHOWN
 COUNTY YORK STATE VIRGINIA
 BRUTON
 SCALE: 1 INCH = 100 FT. JAN-15-1937
 SURVEYED BY WMBG #1220

DRAWER No. SHEET No.

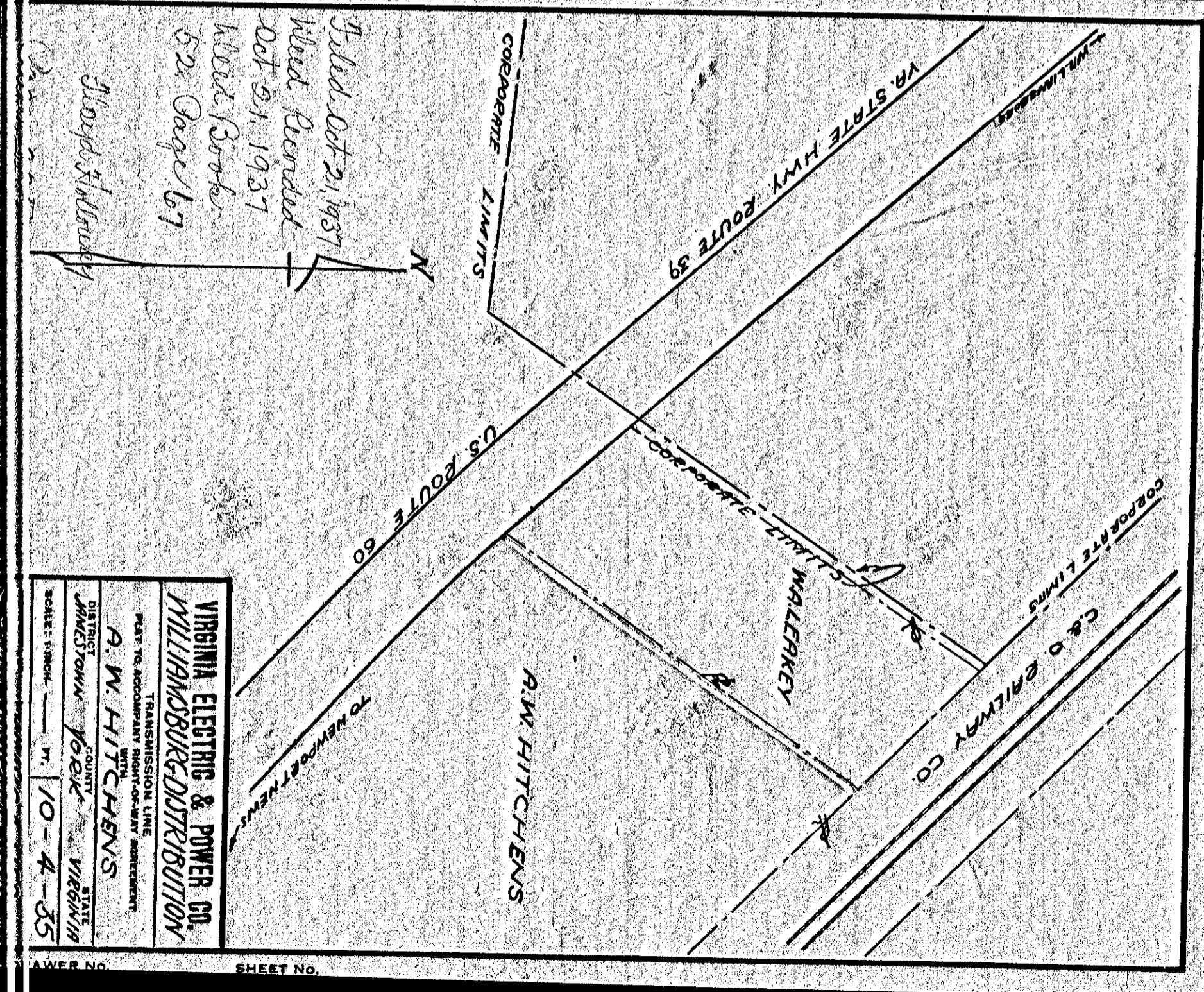
Filed Oct 21, 1937
 Rec'd Oct 21, 1937
 Book 52, Page 65
 Floyd Stollaway
 Clerk



VIRGINIA ELECTRIC & POWER CO.
 WILLIAMSBURG DISTRIBUTION
 TRANSMISSION LINE
 PLAT TO ACCOMPANY RIGHT-OF-WAY AGREEMENT
 WITH
 AS SHOWN
 COUNTY YORK STATE VIRGINIA
 BRUTON
 SCALE: 1 INCH = 100 FT. JAN-15-1937
 SURVEYED BY WMBG-1250

DRAWER No. SHEET No.

333
335



VIRGINIA ELECTRIC & POWER CO.
 WILLIAMSBURG DISTRIBUTION
 TRANSMISSION LINE
 PLAT TO ACCOMPANY RIGHT-OF-WAY AGREEMENT
 WITH
 AS SHOWN
 COUNTY YORK STATE VIRGINIA
 BRUTON
 SCALE: 1 INCH = 100 FT. JAN-15-1937
 SURVEYED BY WMBG-1250

DRAWER No. SHEET No.

Filed Oct 21, 1937
 Rec'd Oct 21, 1937
 Book 52, Page 67
 Floyd Stollaway
 Clerk