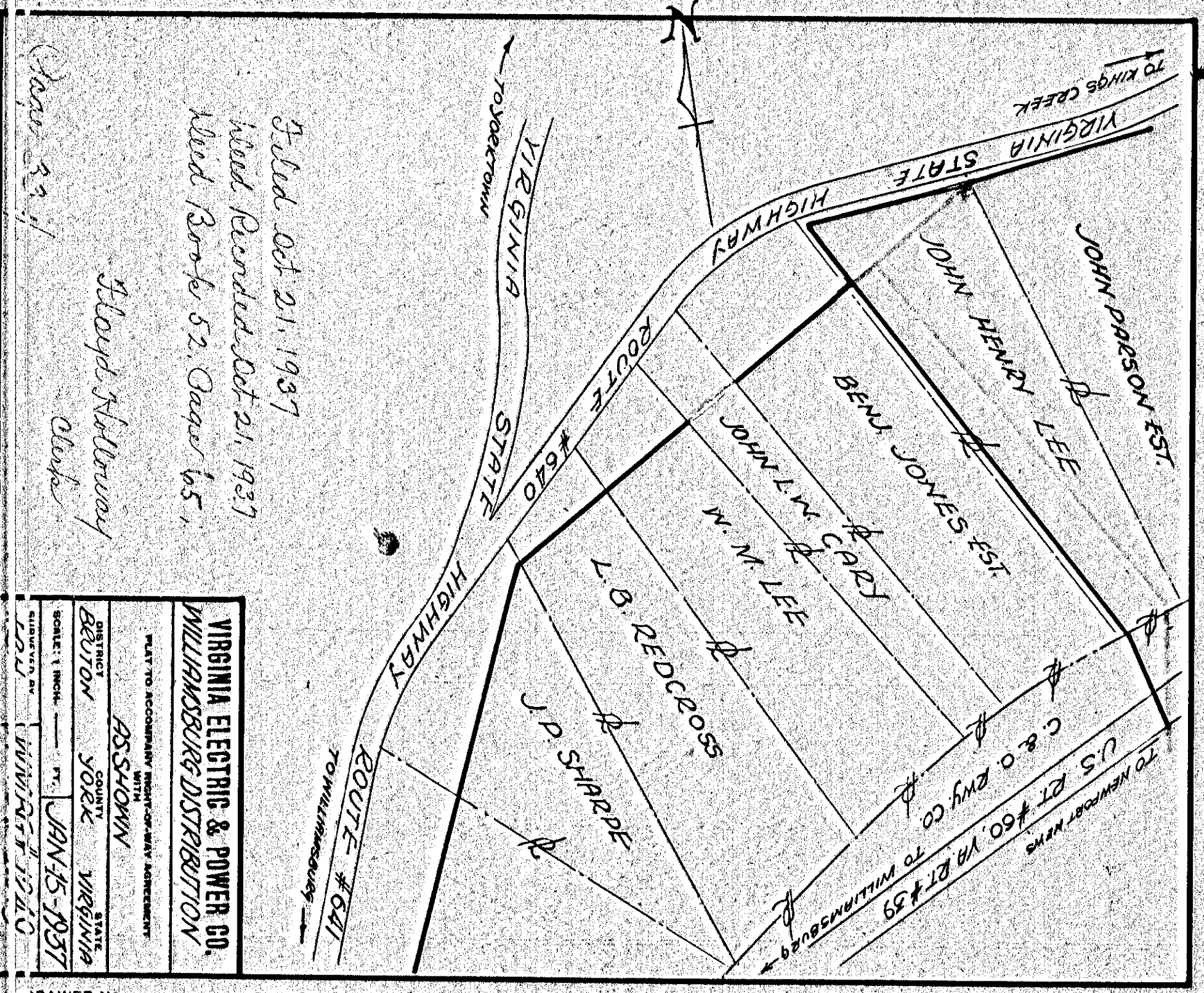


Filed Oct 21, 1937
 Rec'd Oct 21, 1937
 Book 52 Page 51
 Floyd Holloway

VIRGINIA ELECTRIC & POWER CO.
 YORK RIVER EXTENSION
 TRANSMISSION LINE
 PLAT TO ACCOMPANY RIGHT-OF-WAY AGREEMENT
 WITH
 J.S. SHOWN
 DISTRICT
 BRUTON YORK VIRGINIA
 SCALE: 1 INCH = 100 FT.
 APRIL 29, 1937
 SUBMITTED BY
 WMBG #1213

DRAWER No. SHEET No.

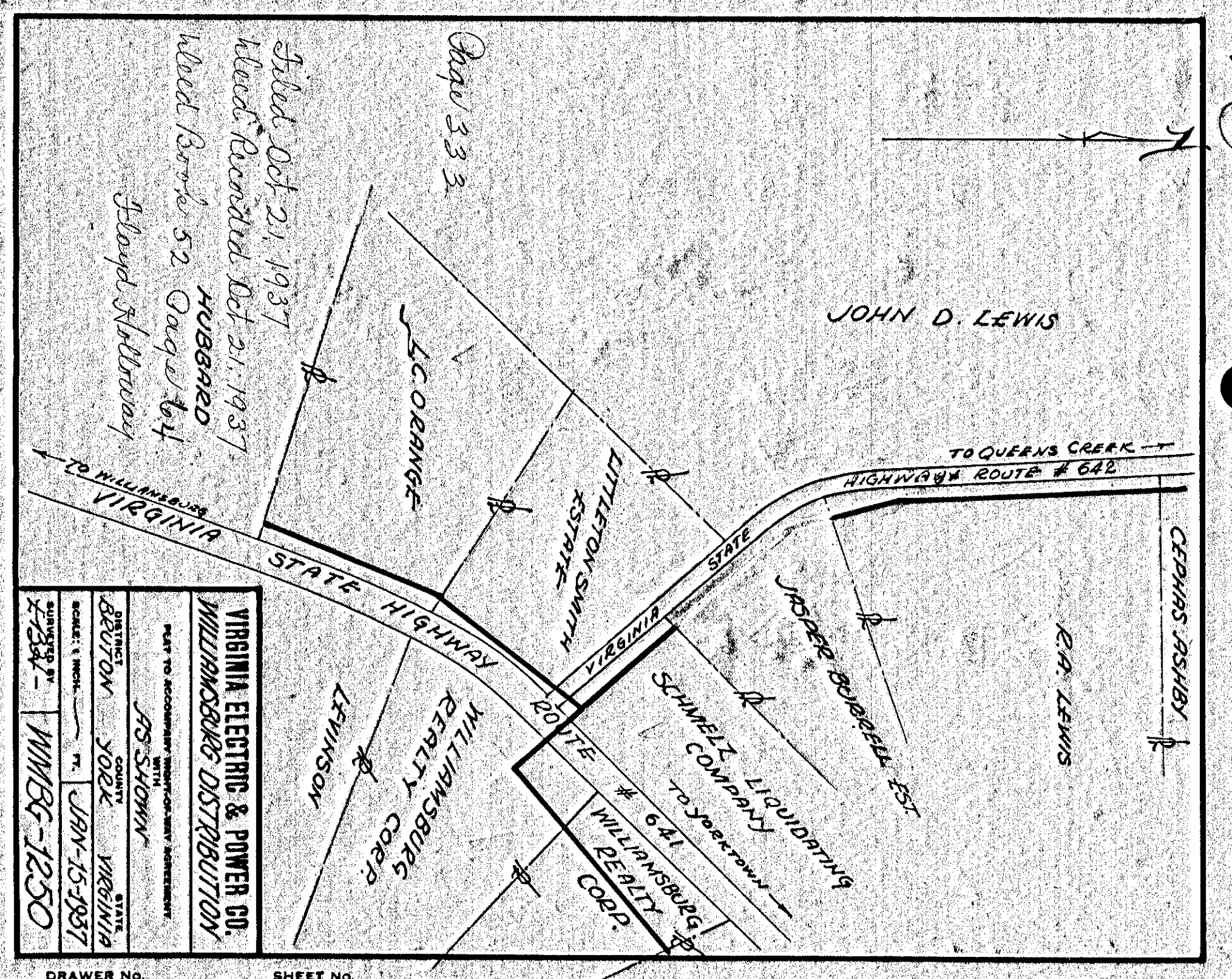
332
 334



Filed Oct 21, 1937
 Rec'd Oct 21, 1937
 Book 52 Page 65
 Floyd Holloway

VIRGINIA ELECTRIC & POWER CO.
 WILLIAMSBURG DISTRIBUTION
 PLAT TO ACCOMPANY RIGHT-OF-WAY AGREEMENT
 WITH
 J.S. SHOWN
 DISTRICT
 BRUTON YORK VIRGINIA
 SCALE: 1 INCH = 100 FT.
 JAN 15, 1937
 SUBMITTED BY
 WMBG #1210

DRAWER No. SHEET No.

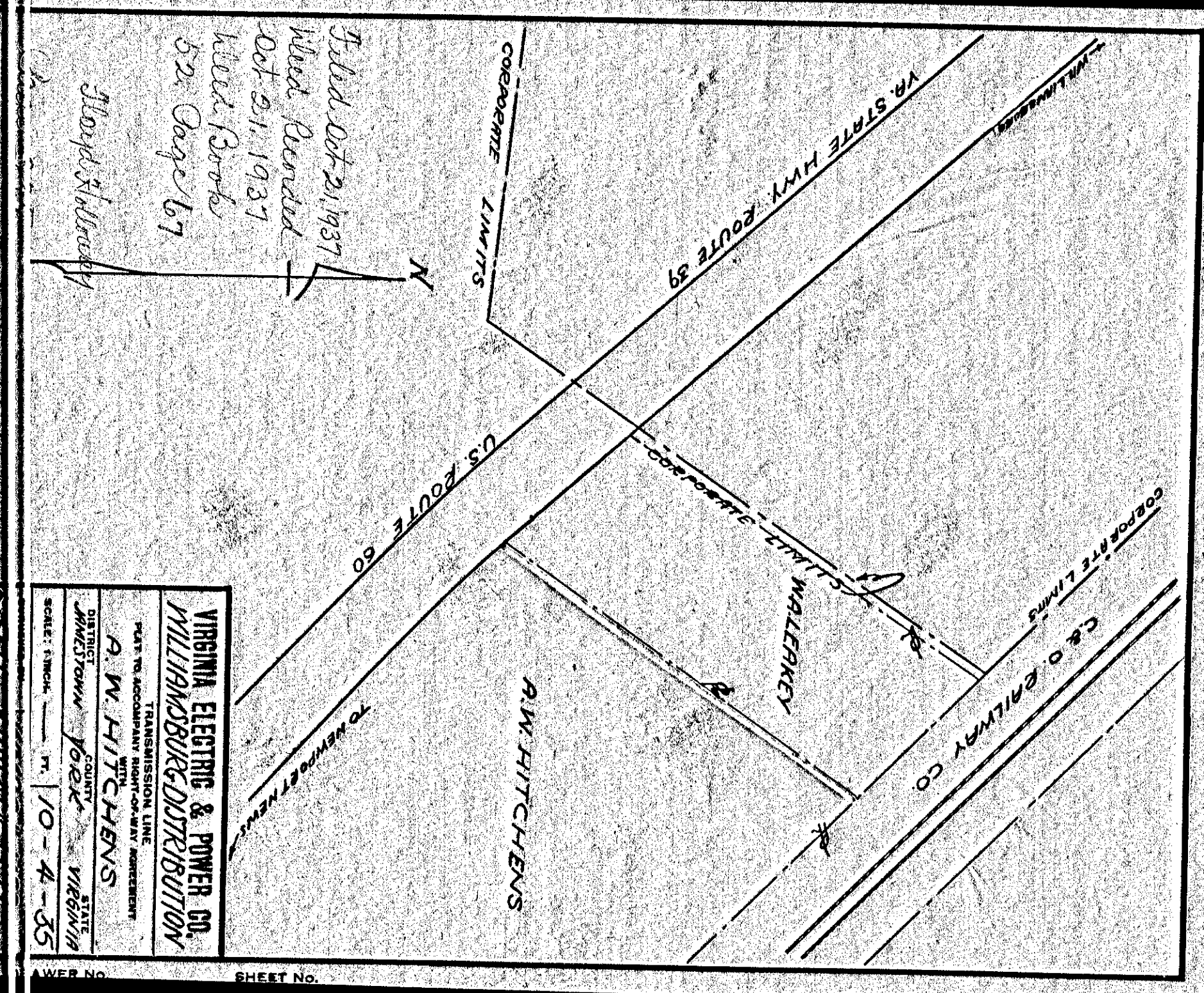


Filed Oct 21, 1937
 Rec'd Oct 21, 1937
 Book 52 Page 64
 Floyd Holloway

VIRGINIA ELECTRIC & POWER CO.
 WILLIAMSBURG DISTRIBUTION
 TRANSMISSION LINE
 PLAT TO ACCOMPANY RIGHT-OF-WAY AGREEMENT
 WITH
 J.S. SHOWN
 DISTRICT
 BRUTON YORK VIRGINIA
 SCALE: 1 INCH = 100 FT.
 JAN 15, 1937
 SUBMITTED BY
 WMBG-1250

DRAWER No. SHEET No.

333
 335



Filed Oct 21, 1937
 Rec'd Oct 21, 1937
 Book 52 Page 67
 Floyd Holloway

VIRGINIA ELECTRIC & POWER CO.
 WILLIAMSBURG DISTRIBUTION
 TRANSMISSION LINE
 PLAT TO ACCOMPANY RIGHT-OF-WAY AGREEMENT
 WITH
 R.W. HITCHENS
 DISTRICT
 BRUTON YORK VIRGINIA
 SCALE: 1 INCH = 100 FT.
 JAN 15, 1937
 SUBMITTED BY
 WMBG-1257

DRAWER No. SHEET No.