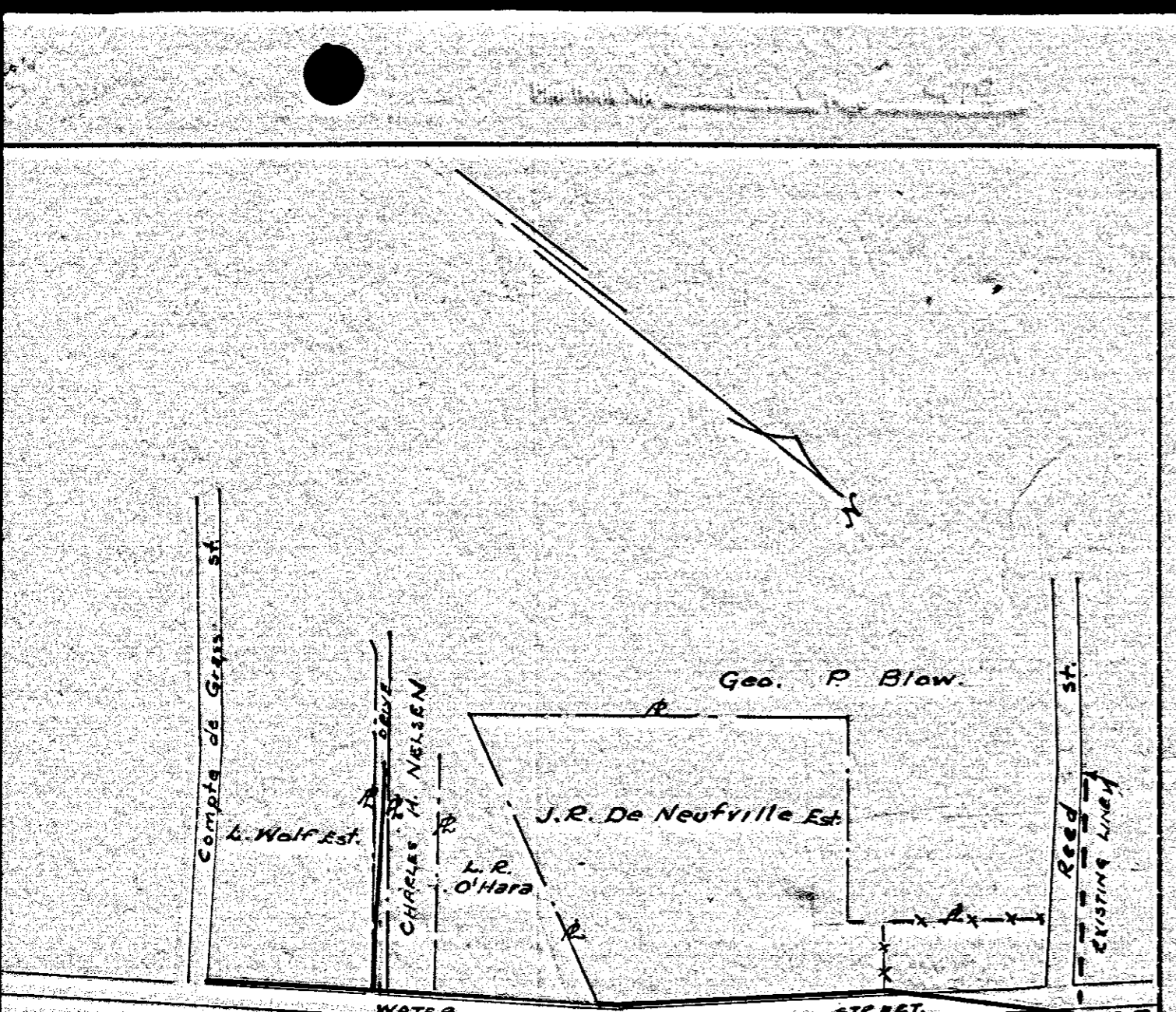


PLAT SHOWING SUBDIVISION OF A PART
 OF A.W. HITCHENS' PROPERTY BORDERING
 ON NEW PENNIMAN ROAD
 BRUTON DISTRICT YORK COUNTY, VA.
 SCALE: 1" = 50' OCT. 1934
 SURVEYED BY V.D. McMANUS
 REVISED JUNE, 1939 Y.D. McM.
 IRON MARKERS SHOWN Y



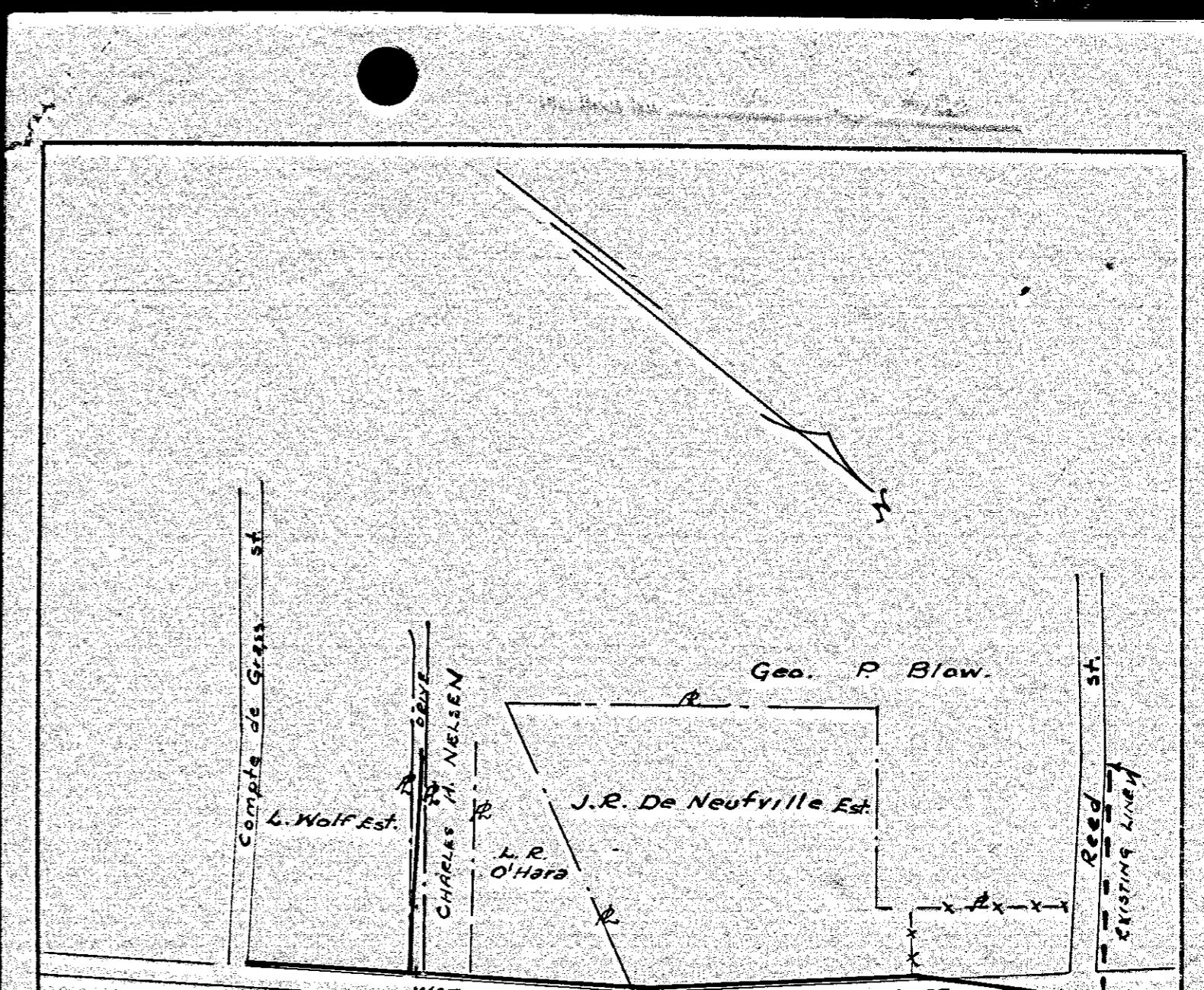
Filed July 8, 1939
 Deed Recorded
 Deed Book 53, page 584
 Floyd Hallaway, Clerk

VIRGINIA ELECTRIC & POWER CO.
YORKTOWN DISTRIBUTION
 PLAT TO ACCOMPANY RIGHT-OF-WAY AGREEMENT
 WITH
 AS SHOWN
 DISTRICT COUNTY STATE
 NELSON YORK VA
 SCALE: 1 INCH = 40 FT. May 18, 1939

418

419

420



Filed July 8, 1939
 Deed Recorded
 Deed Book No 53, page 584
 Floyd Hallaway, Clerk

VIRGINIA ELECTRIC & POWER CO.
YORKTOWN DISTRIBUTION
 PLAT TO ACCOMPANY RIGHT-OF-WAY AGREEMENT
 WITH
 AS SHOWN
 DISTRICT COUNTY STATE
 NELSON YORK VA
 SCALE: 1 INCH = 40 FT. May 18, 1939

SHEET NO. DRAWER NO.