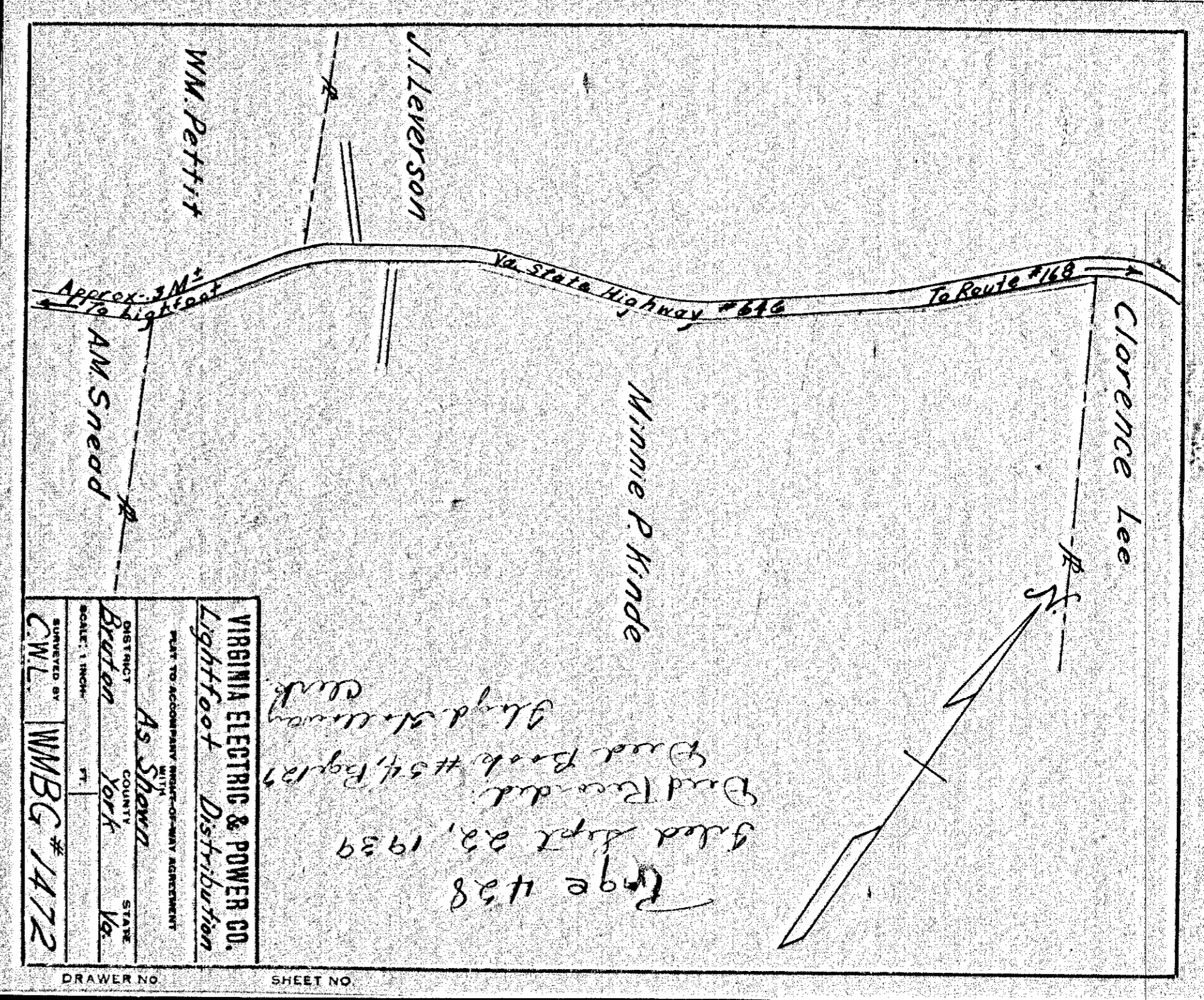


VIRGINIA ELECTRIC & POWER CO.
WILLIAMSBURG DISTRIBUTION
PLAT TO ACCOMPANY RIGHT-OF-WAY AGREEMENT
WITH
AS SHOWN
DISTRICT BRUTON YORK COUNTY VIRGINIA
SCALE: 1 INCH = 40 FT.
SUBMITTED BY C.W.L.
WMBG # 1486

Page 427
Grid Sept 22, 1939
Grid Book #54, Page 136
Gloyd Shallenmyer Clark

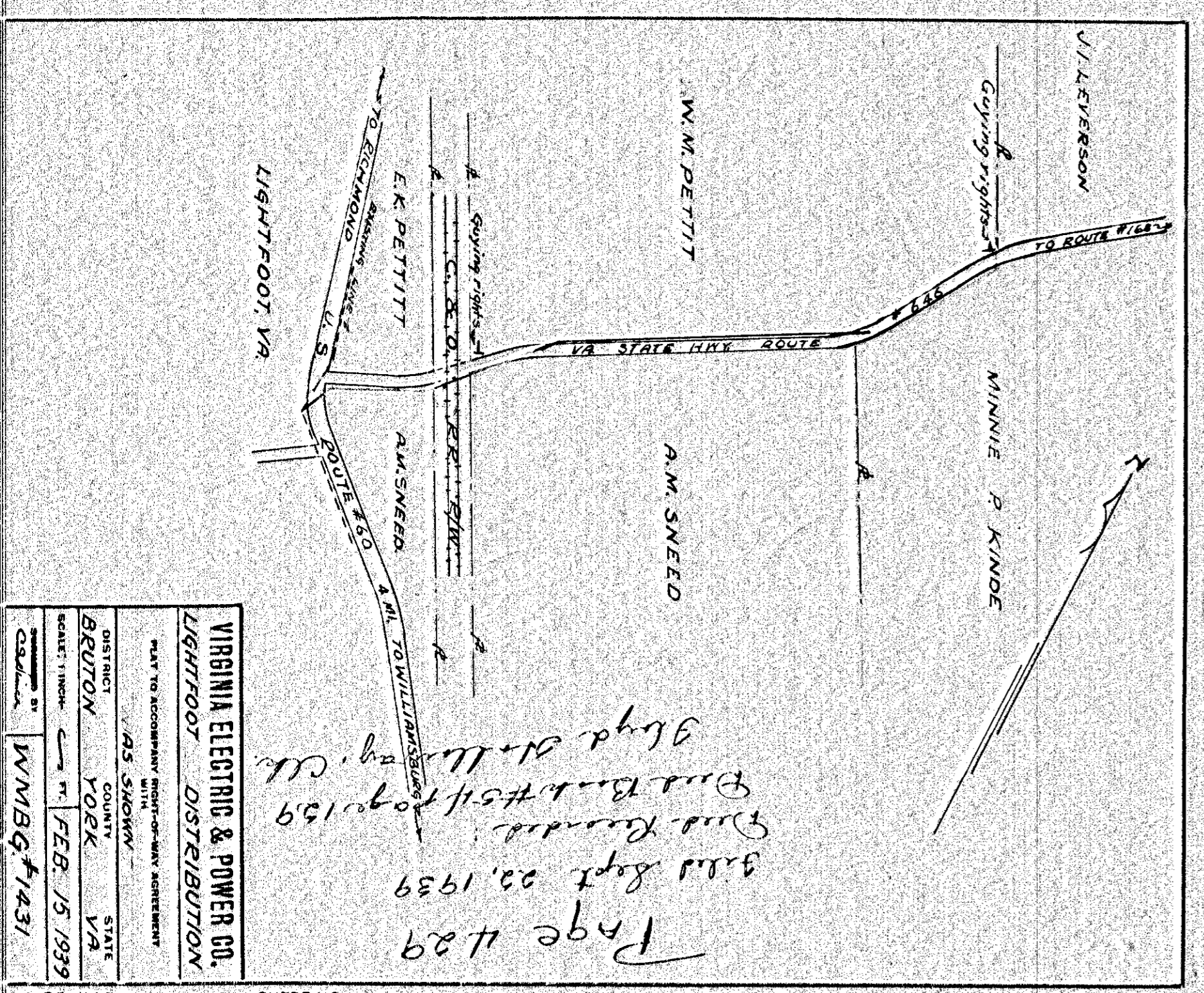
DRAWER NO. SHEET NO.



VIRGINIA ELECTRIC & POWER CO.
Lightfoot Distribution
PLAT TO ACCOMPANY RIGHT-OF-WAY AGREEMENT
WITH
AS SHOWN
DISTRICT BRUTON YORK COUNTY VIRGINIA
SCALE: 1 INCH = 40 FT.
SUBMITTED BY C.W.L.
WMBG # 1472

Page 428
Grid Sept 22, 1939
Grid Book #54, Page 137
Gloyd Shallenmyer Clark

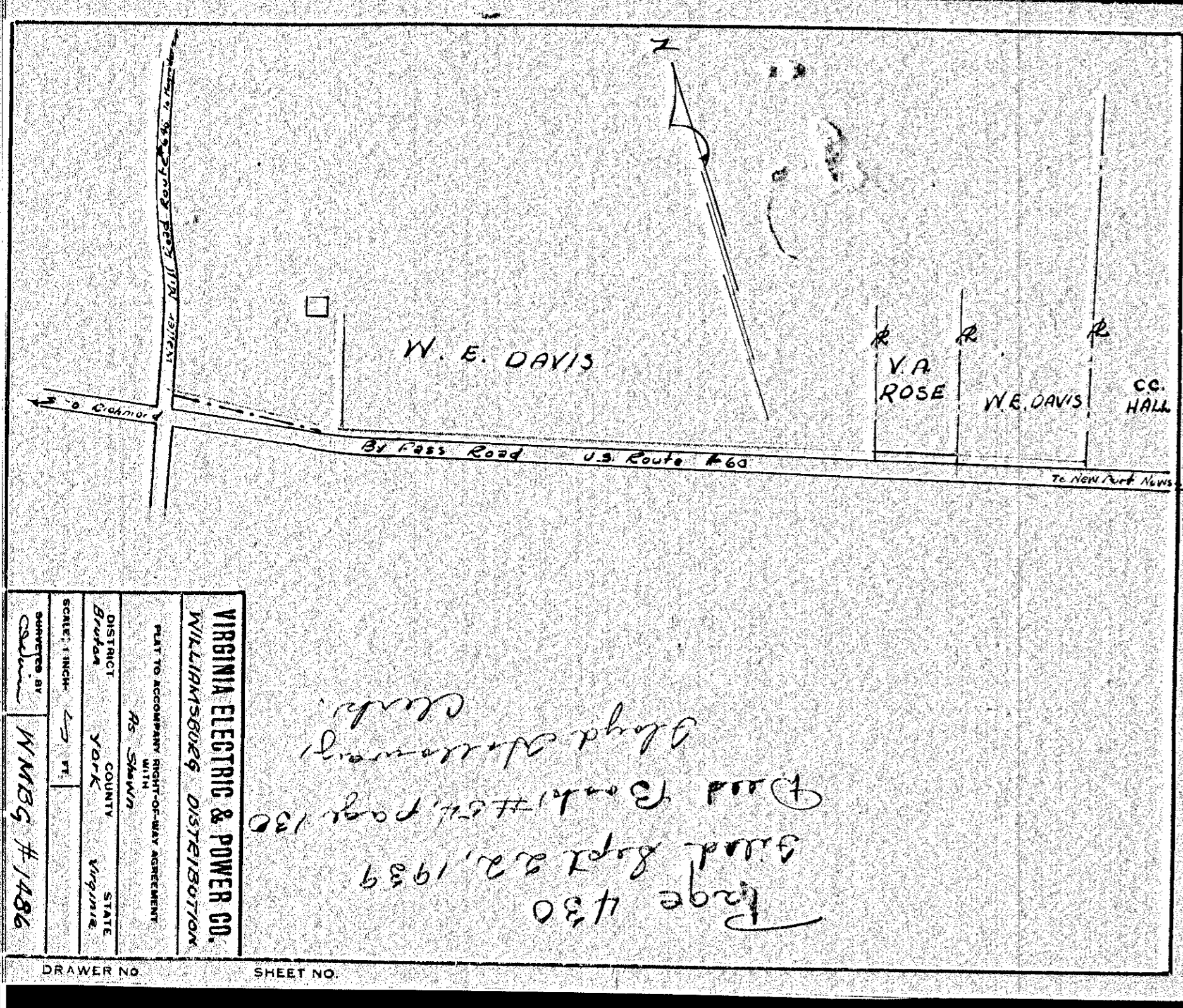
DRAWER NO. SHEET NO.



VIRGINIA ELECTRIC & POWER CO.
LIGHTFOOT DISTRIBUTION
PLAT TO ACCOMPANY RIGHT-OF-WAY AGREEMENT
WITH
AS SHOWN
DISTRICT BRUTON YORK COUNTY VIRGINIA
SCALE: 1 INCH = 40 FT.
SUBMITTED BY C.W.L.
WMBG # 1431

Page 429
Grid Sept 22, 1939
Grid Book #54, Page 139
Gloyd Shallenmyer Clark

DRAWER NO. SHEET NO.



VIRGINIA ELECTRIC & POWER CO.
WILLIAMSBURG DISTRIBUTION
PLAT TO ACCOMPANY RIGHT-OF-WAY AGREEMENT
WITH
AS SHOWN
DISTRICT BRUTON YORK COUNTY VIRGINIA
SCALE: 1 INCH = 40 FT.
SUBMITTED BY C.W.L.
WMBG # 1486

Page 430
Grid Sept 22, 1939
Grid Book #54, Page 130
Gloyd Shallenmyer Clark

DRAWER NO. SHEET NO.

429

427

430

428