

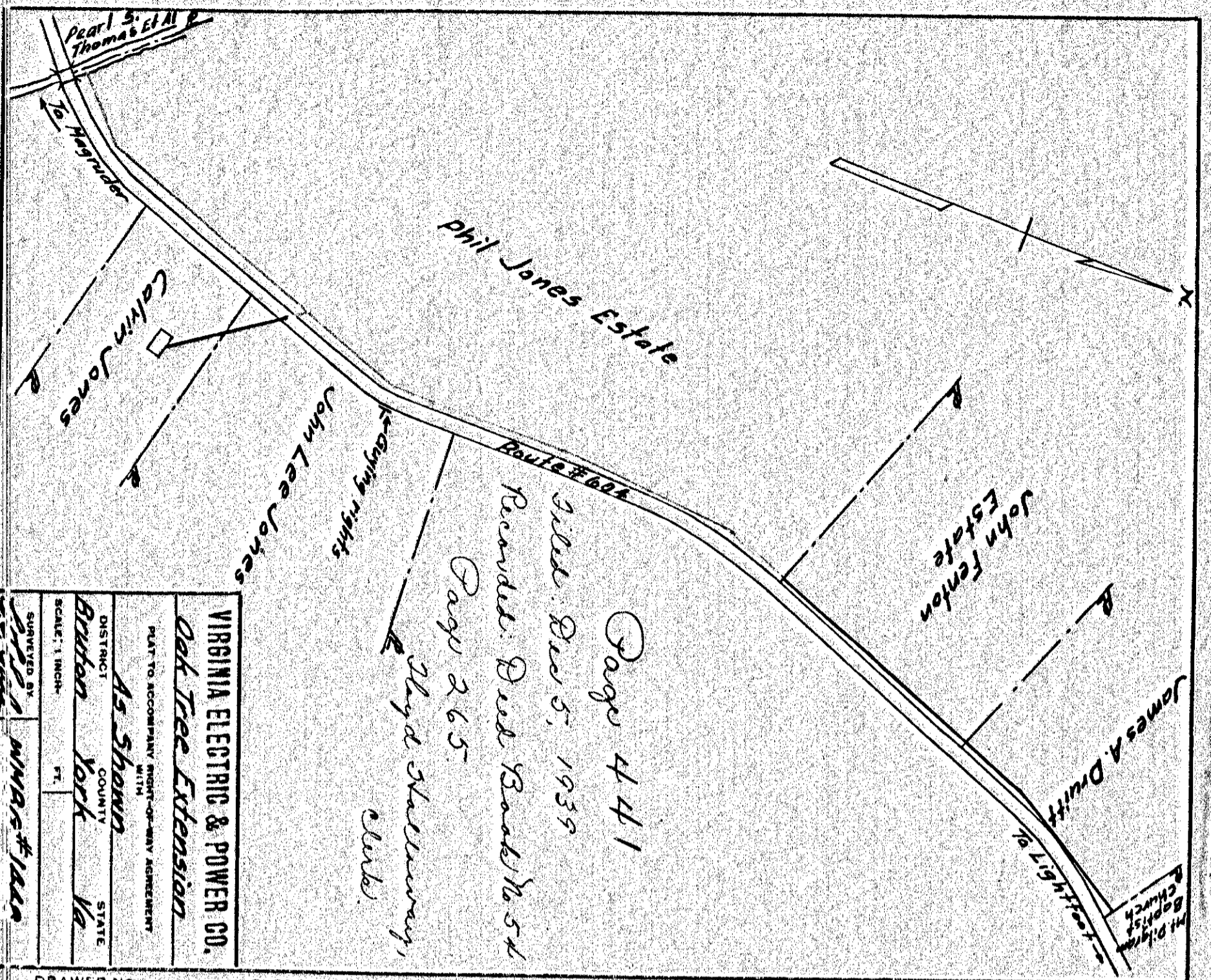
Page 439
 Will Deed 5, 1935
 Record Deed Book No. 54,
 Page 2, 62
 Olga Skellerny,
 Clerk

VIRGINIA ELECTRIC & POWER CO.	
WILLIAMS BURG. DISTRIBUTION	
PLAT TO ACCOMPANY RIGHT-OF-WAY AGREEMENT	
DISTRICT	AS SHOWN
COUNTY	YORK
STATE	VA
DISTRICT	BEUTON
COUNTY	YORK
STATE	VA
SCALE: 1 INCH =	FT.
DATE	JAN. 25, 1938.
APPROVED BY	W.M.B.G. # 1348
SUBMITTED BY	W.M.B.G. # 1348

DRAWER NO. SHEET NO.

439

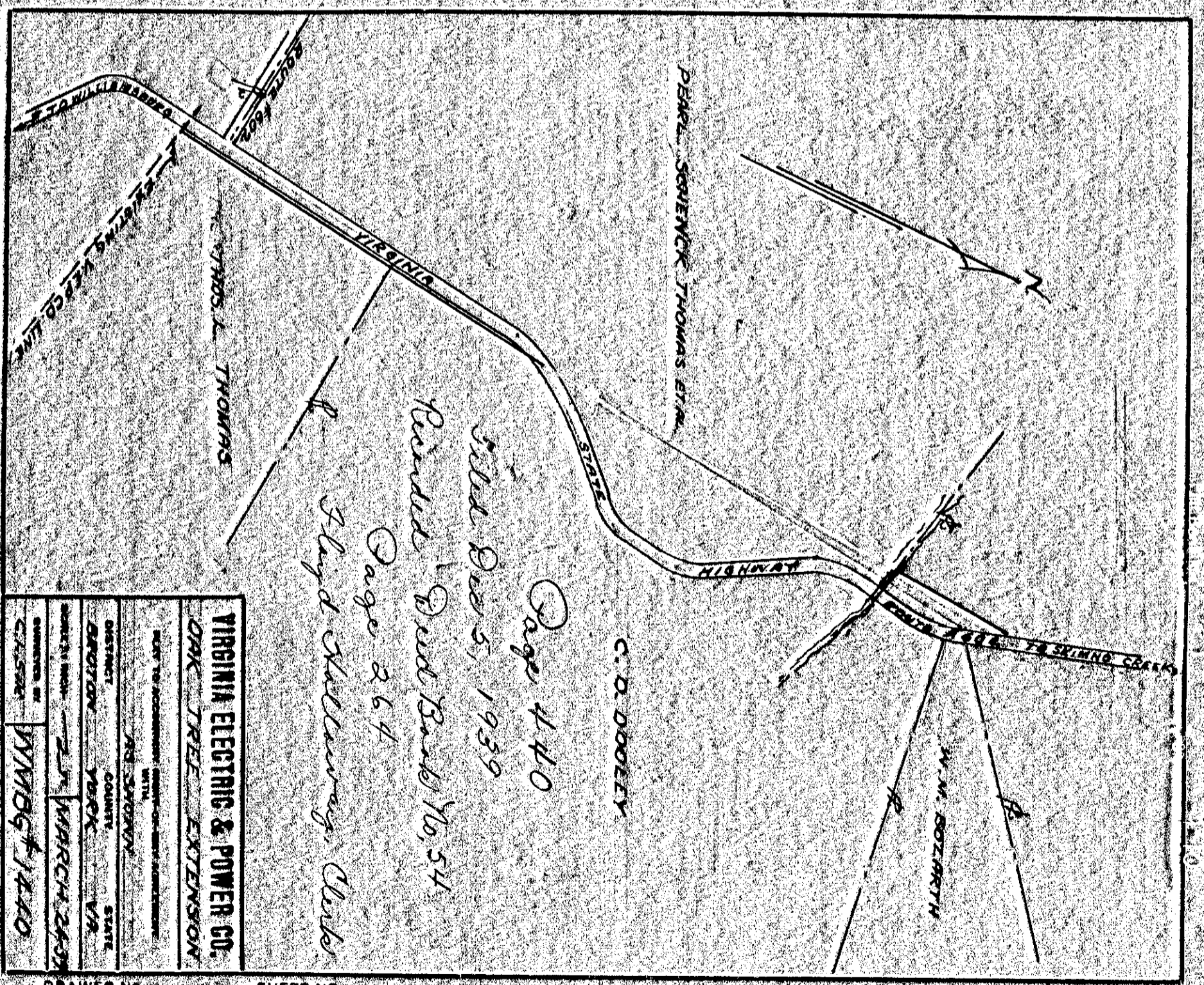
441



Page 441
 Will Deed 5, 1935
 Record Deed Book No. 54,
 Page 2, 65
 Olga Skellerny,
 Clerk

VIRGINIA ELECTRIC & POWER CO.	
Oak Tree Extension	
PLAT TO ACCOMPANY RIGHT-OF-WAY AGREEMENT	
DISTRICT	AS SHOWN
COUNTY	YORK
STATE	VA
DISTRICT	BEUTON
COUNTY	YORK
STATE	VA
SCALE: 1 INCH =	FT.
DATE	JAN. 25, 1938.
APPROVED BY	W.M.B.G. # 1348
SUBMITTED BY	W.M.B.G. # 1348

DRAWER NO. SHEET NO.



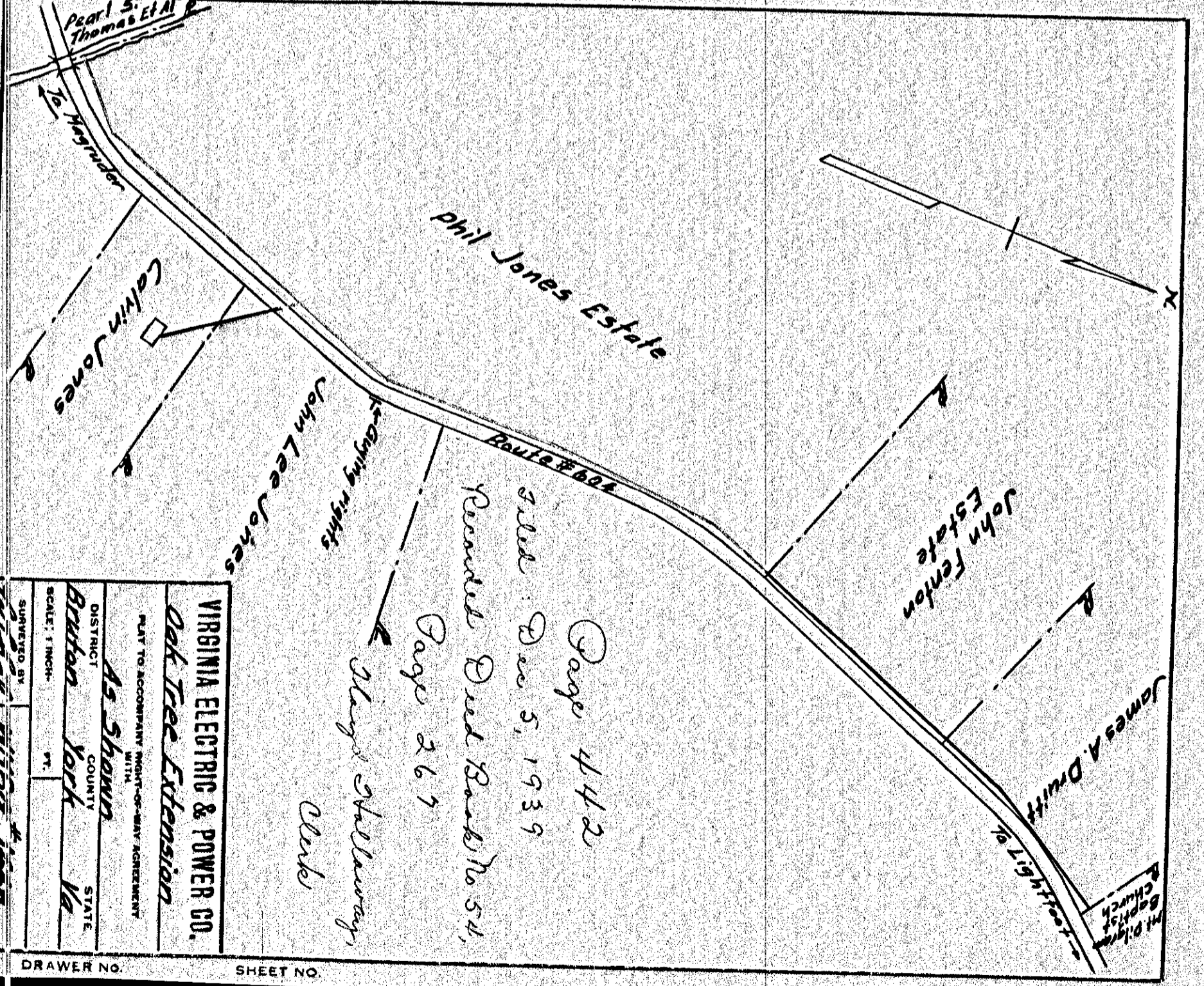
Page 440
 Will Deed 5, 1935
 Record Deed Book No. 54,
 Page 2, 64
 Olga Skellerny,
 Clerk

VIRGINIA ELECTRIC & POWER CO.	
Oak Tree Extension	
PLAT TO ACCOMPANY RIGHT-OF-WAY AGREEMENT	
DISTRICT	AS SHOWN
COUNTY	YORK
STATE	VA
DISTRICT	BEUTON
COUNTY	YORK
STATE	VA
SCALE: 1 INCH =	FT.
DATE	MARCH 24, 1938
APPROVED BY	W.M.B.G. # 1440
SUBMITTED BY	W.M.B.G. # 1440

DRAWER NO. SHEET NO.

440

442



Page 442
 Will Deed 5, 1935
 Record Deed Book No. 54,
 Page 2, 67
 Olga Skellerny,
 Clerk

VIRGINIA ELECTRIC & POWER CO.	
Oak Tree Extension	
PLAT TO ACCOMPANY RIGHT-OF-WAY AGREEMENT	
DISTRICT	AS SHOWN
COUNTY	YORK
STATE	VA
DISTRICT	BEUTON
COUNTY	YORK
STATE	VA
SCALE: 1 INCH =	FT.
DATE	MARCH 24, 1938
APPROVED BY	W.M.B.G. # 1440
SUBMITTED BY	W.M.B.G. # 1440

DRAWER NO. SHEET NO.